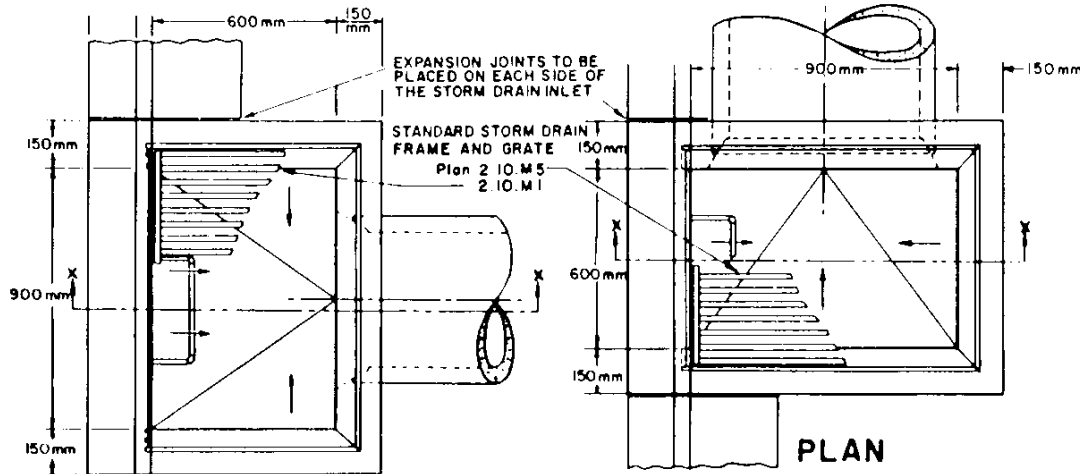


CASE ①

CASE ②



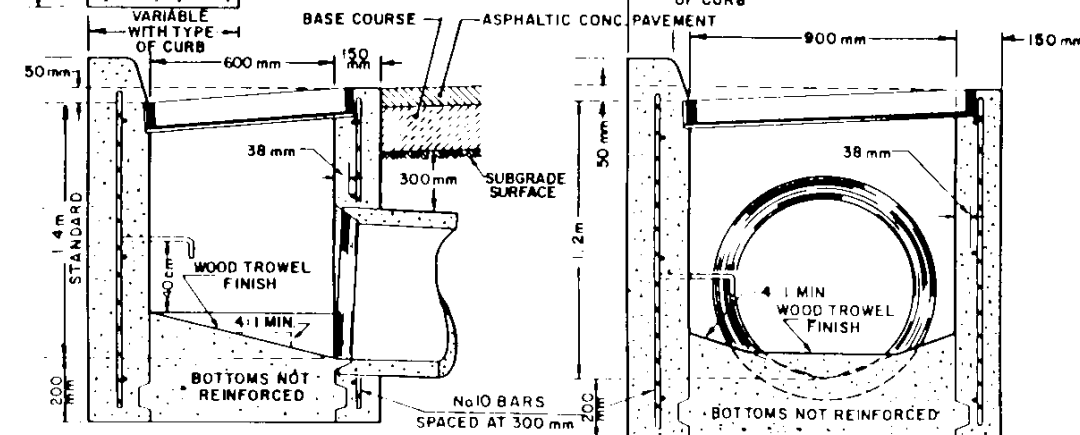
PLAN

PLAN

VARIABLE WITH TYPE OF CURB

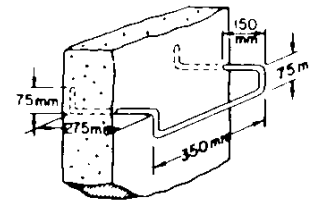
VARIABLE WITH TYPE OF CURB

VARIABLE WITH TYPE OF CURB



SECTION X - X

SECTION X - X



STEP DETAIL

NOTES:

1. STEEL LADDER RUNGS TO BE INSTALLED AT 40cm ± INTERVALS IN BOXES HAVING A DEPTH OF MORE THAN 1.0m.  
e.g. - BOXES OF 1.0m TO 1.5m TO HAVE ONE 19mm STEEL RUNG 40cm FROM BOTTOM.
2. DRAIN PIPES TO BE EITHER REINFORCED CONCRETE PIPE OR CORRUGATED STEEL PIPE AS SPECIFIED.
3. PIPE OR PIPES TO BE INSTALLED IN ANY WALL OR WALLS AS REQUIRED.
4. TOP OF INLET TO BE FLUSH WITH TOP OF FINISHED PAVEMENT PROVISION SHALL BE MADE IN CONSTRUCTION OF INLET TO ACCOMMODATE SURFACE DRAINAGE WHEN HIGHWAY CONSTRUCTION IS IN STAGES.
5. STANDARD STRUCTURE SHOWN. NOMINAL METRIC DIMENSIONS.

**Alberta**  
TRANSPORTATION  
Engineering Division

DWG No	CB-6 2 IO.M15
	Date
Original	Sept. 1979
Revised	Feb. 1985

**CONCRETE  
STORM DRAIN INLET  
STANDARD 1.2m HEIGHT  
600mm x 900mm OPENING**