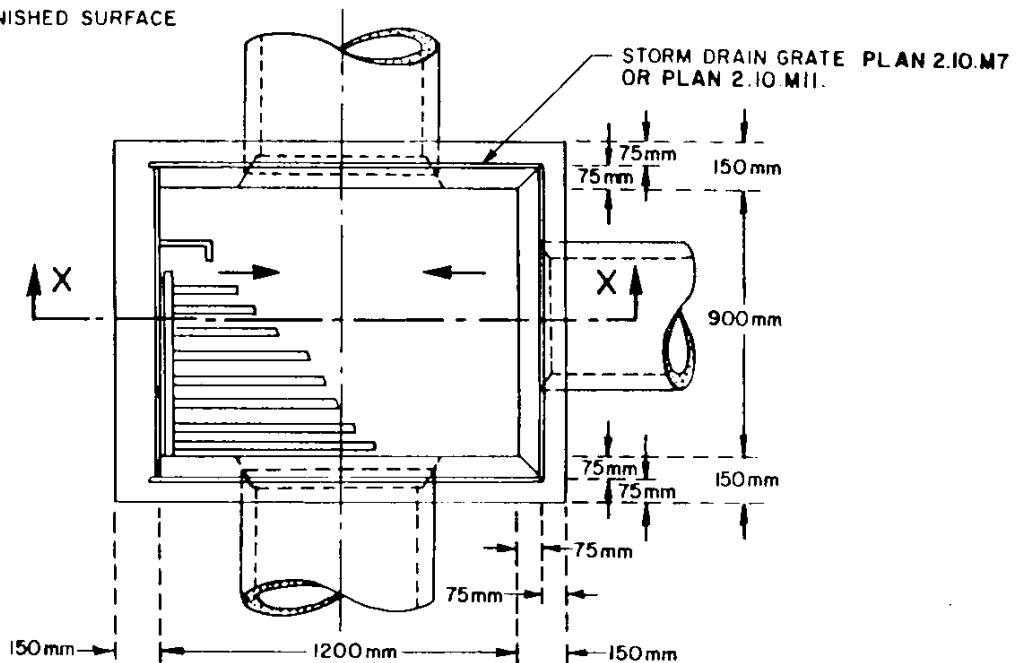
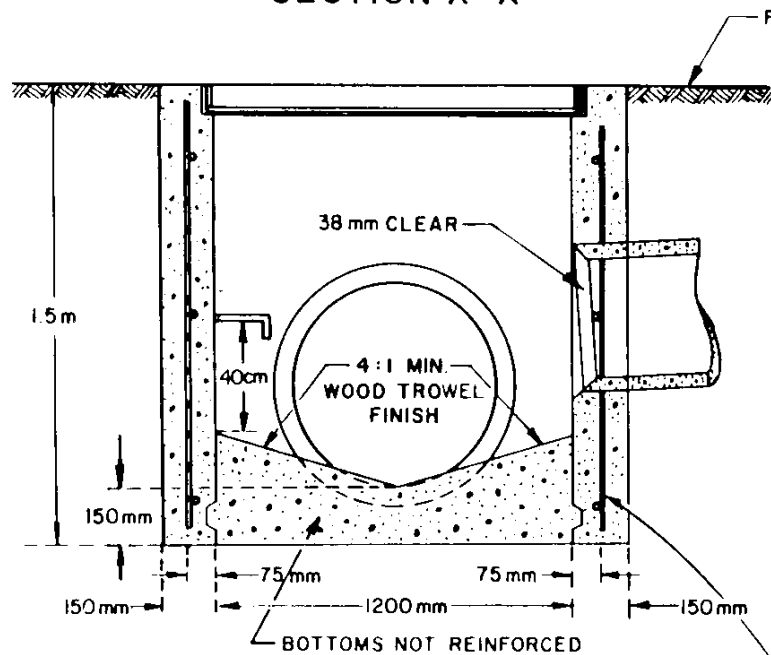


SECTION X-X

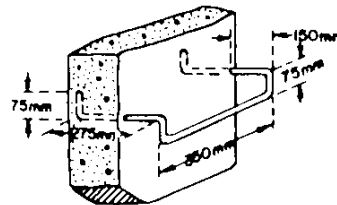


NOTES

- STEEL LADDER RUNGS TO BE INSTALLED AT 40 cm INTERVALS IN BOXES HAVING A DEPTH OF MORE THAN 1.0 m
e.g. - BOXES OF DEPTH 1.0 m TO 1.5 m TO HAVE ONE 19mm STEEL RUNG 40 cm FROM BOTTOM.
- DRAIN PIPES TO BE EITHER REINFORCED CONCRETE PIPE OR CORRUGATED STEEL PIPE AS SPECIFIED.
- PIPE OR PIPES TO BE INSTALLED IN ANY WALL OR WALLS AS REQUIRED.
- TOP OF INLET TO BE FLUSH WITH TOP OF FINISHED SURFACE. PROVISION SHALL BE MADE IN CONSTRUCTION OF INLET TO ACCOMMODATE SURFACE DRAINAGE WHEN HIGHWAY CONSTRUCTION IS IN STAGES.
- STANDARD STRUCTURE SHOWN. NOMINAL METRIC DIMENSIONS.

No.10 DEFORMED REINFORCING BARS SPACED AT APPROX. 300 mm TO BE PLACED VERTICALLY AND HORIZONTALLY IN A CAGE EFFECT.

STEP DETAIL



	DWG. No	CB - 6 2.10.M6
		Date
	Original	May, 1979
	Revised	Dec., 1986

CONCRETE STORM DRAIN INLET

900 mm x 1200 mm OPENING