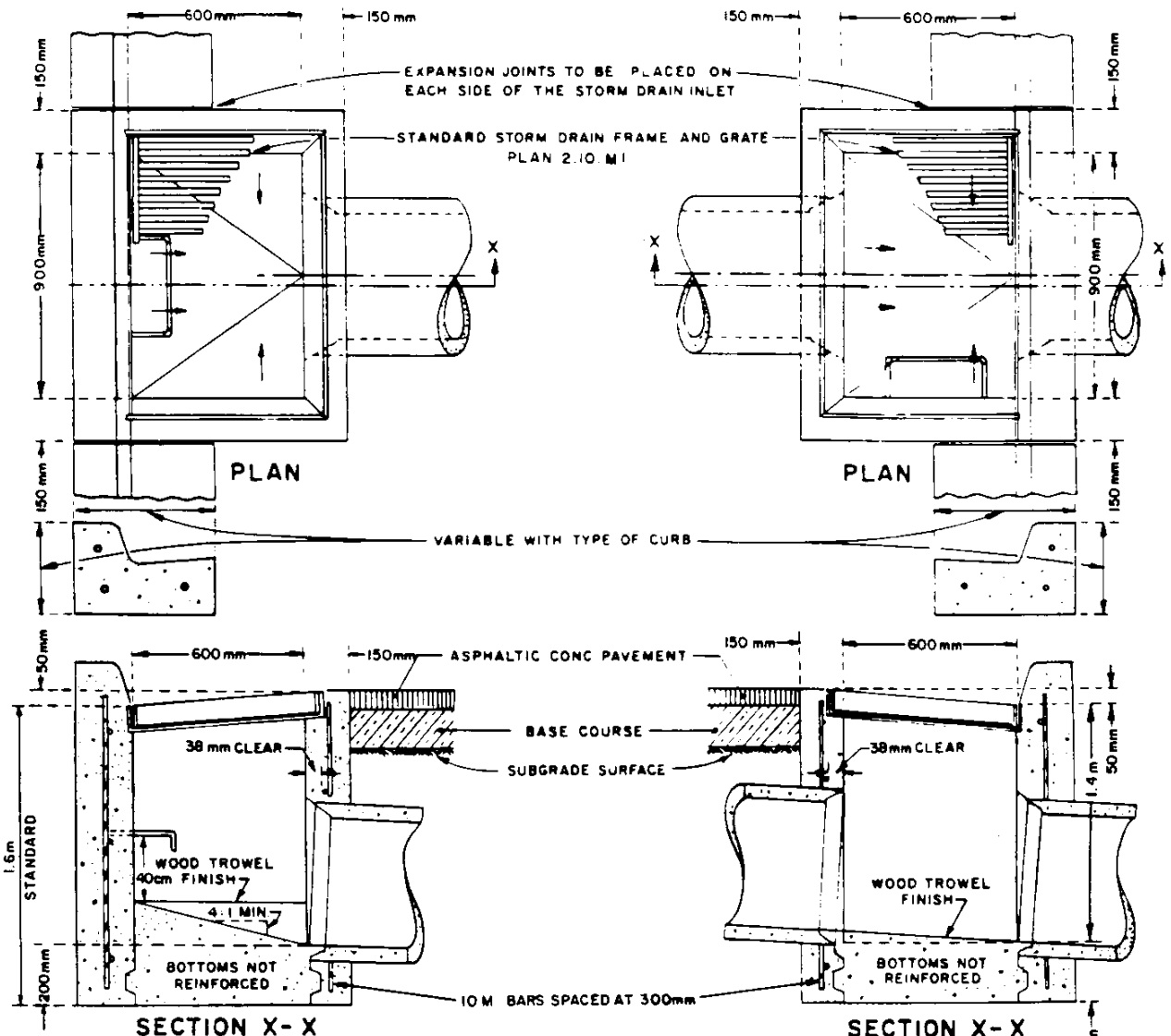


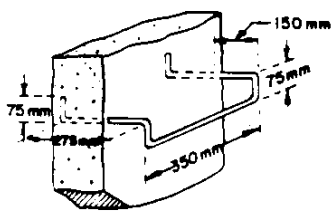
CASE ①

CASE ②



NOTES:

- STEEL LADDER RUNGS TO BE INSTALLED AT 40cm ± INTERVALS IN BOXES HAVING A DEPTH OF MORE THAN 1m e.g. BOXES OF DEPTH 1m TO 1.5m TO HAVE ONE 19mm STEEL RUNG 40cm FROM BOTTOM
- DRAIN PIPES TO BE EITHER REINFORCED CONCRETE PIPE OR CORRUGATED STEEL PIPE AS SPECIFIED
- PIPE OR PIPES TO BE INSTALLED IN ANY WALL OR WALLS AS REQUIRED.
- ABUTTING CONCRETE CURB AND GUTTER TO BE VARIABLE AS SPECIFIED.
- TOP OF INLET TO BE FLUSH WITH TOP OF FINISHED PAVEMENT PROVISION SHALL BE MADE IN CONSTRUCTION OF INLET TO ACCOMMODATE SURFACE DRAINAGE WHEN HIGHWAY CONSTRUCTION IS IN STAGES
- STANDARD STRUCTURE SHOWN.
- NOMINAL METRIC DIMENSIONS.



STEP DETAIL

	DWG. No	CB-6 2.10.M8
	Date	
	Original	May, 1979
	Revised	Feb, 1985

**CONCRETE
STORM DRAIN INLET
600mm x 900mm OPENING
(CAST IN PLACE)**