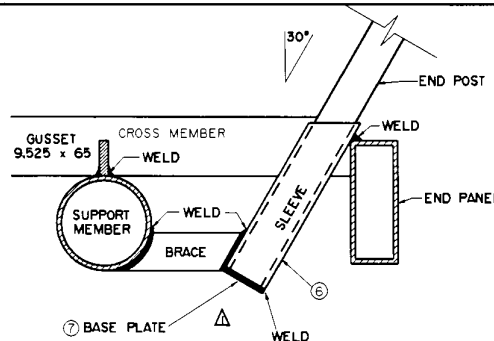
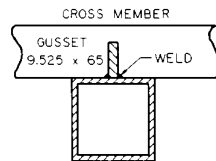


PLAN VIEW



DETAIL 1



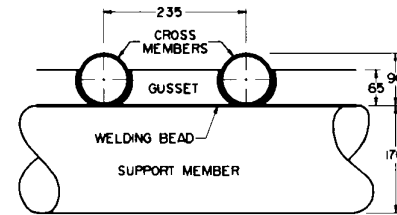
DETAIL 2

SUPPORT MEMBER (ALTERNATE)

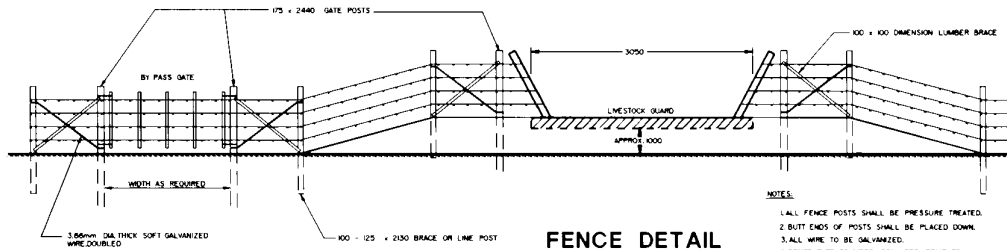
MATERIALS LIST				
ITEM	QTY.	DESCRIPTION	MATERIAL (STEEL)	DIMENSIONS (mm)
1	2	SIDE PANELS	RECTANGULAR STRUCTURAL TUBING	HSS 4.762 WALL 50 x 205 x 3050 L.G.
2	2	MUD SILLS	ROUND STRUCTURAL TUBING	HSS 4.762 WALL 220 O.D. x 3050 L.G.
3	8	GUSSETS FOR MUD SILLS	FLAT BAR	9.525 x 100 x 150 L.G.
4	2	BREAK-AWAY END POSTS	ROUND STRUCTURAL TUBING	HSS 3.969 WALL 60 O.D. x 1850 L.G.
5	10	BRACKETS FOR END POSTS	HALF ROUND BAR	12.700 x 75 L.G.
6	2	SLEEVES FOR END POSTS	ROUND STRUCTURAL TUBING	HSS 5.939 WALL 75 O.D. x 300 L.G.
7	2	BASE PLATE FOR SLEEVES	FLAT BAR OR PLATE	9.525 THK. x 75 DIA.
8	1	CROSS MEMBERS	ROUND STRUCTURAL TUBING	HSS 3.969 WALL 90 O.D. x 2900 L.G.
9	20	GUSSETS FOR CROSS MEMBERS	FLAT BAR OR PLATE	9.525 x 65 x 205 L.G.
10	2	SUPPORT MEMBERS	ROUND STRUCTURAL TUBING	HSS 5.556 WALL 170 O.D. x 2440 L.G.
		ALTERNATE SUPPORT MEMBERS	ROUND STRUCTURAL TUBING	HSS 6.350 WALL 180 O.D. x 2440 L.G.
			SQUARE STRUCTURAL TUBING	HSS 6.350 WALL 125 x 125 x 2440 L.G.
11	2	END PANELS	RECTANGULAR STRUCTURAL TUBING	HSS 4.762 WALL 75 x 205 x 2440 L.G.
12	4	BRACES FOR SLEEVES	FLAT BAR	9.525 x 65 x 300 L.G.

NOTES

- DIMENSIONS ON THIS PLAN ARE GIVEN IN MM OR DECIMALS THERE-OF. ROUNDED DIMENSIONS ARE USED WHERE POSSIBLE.
- SURFACES OF STEEL SHALL BE OPEN ONE COAT OF OIL ALKYLID TYPE PRIMER TO CONFORM TO C.S.S.B. SPECIFICATION 1-07-90M.
- CROSS MEMBERS SHALL BE FILLET WELDED TO THE GUSSET PLATES WITH 6mm MINIMUM WELD. ALL OTHER FILLET WELDS SHALL BE 6mm MINIMUM.
- RANGE TYPE LIVESTOCK GUARDS ARE DESIGNED TO BE USED ON LIGHTLY OR SELDOM USED ROADS WITH NO MORE THAN STANDARD FARM OR RANCH VEHICLES.

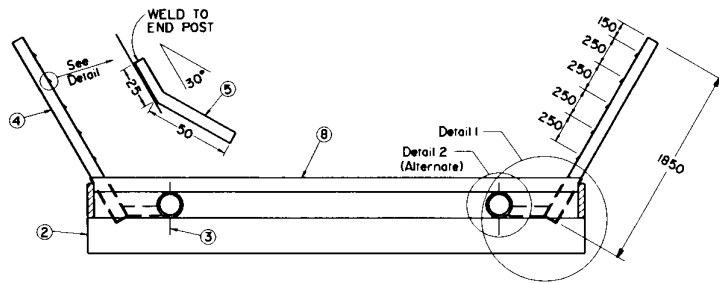


DETAIL 3

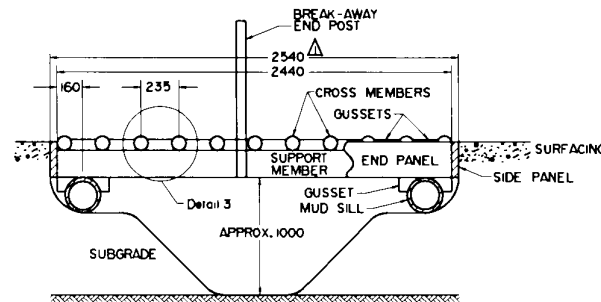


FENCE DETAIL

- NOTES:
- ALL FENCE POSTS SHALL BE PRESSURE TREATED.
  - BUTT ENDS OF POSTS SHALL BE PLACED DOWN.
  - ALL WIRE TO BE GALVANNEED.
  - FENCE TYPE TO MEET LOCAL REQUIREMENTS.



SECTION A-A



SECTION B-B

No.	REVISIONS	BY	DATE

Approved: *Allen Kavan*  
 Executive Director,  
 Technical Standards Branch

Alberta  
 TRANSPORTATION  
 AND UTILITIES

Date: NOVEMBER 22, 1994

LIVESTOCK GUARD  
 RANGE TYPE  
 3.05m WIDTH

Prepared By: A.N. & B.R. Checked By: B.K. & J.F. Issue: N.T.S. Date: Dwg. No.: CB6 - 2.13 M4