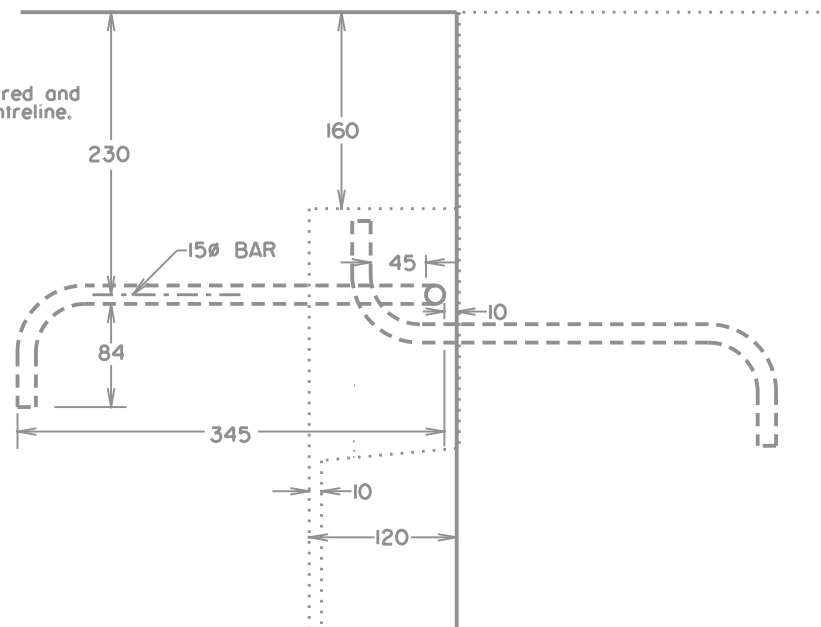


PLAN VIEW

Connections are centred and symmetrical about centreline.



ELEVATION VIEW

NOTES:

1. CONCRETE SHALL BE SULPHATE RESISTANT CONCRETE 40 MP_a AT 28 DAYS.
2. REINFORCEMENT SHALL BE EPOXY COATED REINFORCING BARS.
3. REINFORCING STEEL SHALL BE GRADE 400 UNLESS NOTED OTHERWISE.
4. EXPOSED SURFACES SHALL HAVE 20mm CHAMFER OR FILLET OR OTHERWISE SPECIFIED.
5. DIAMETERS OF BENDS AND DETAILS OF HOOKS, UNLESS NOTED OTHERWISE SHALL CONFORM TO THE RECOMMENDED SIZES DETAILED IN THE REINFORCING STEEL INSTITUTE OF CANADA "MANUAL OF STANDARD PRACTICE".
6. FOR CONNECTION DETAILS AND 3 DIMENSIONAL VIEW OF BARRIERS SEE DRAWING CB6-4.2MI2, MI3 AND MI4.
7. HOOKS AND EYES SHALL BE 15Ø GALVANIZED STEEL.
8. HOOKS AND EYES SHALL BE SECURED IN PLACE DURING CASTING.
9. DIMENSIONS ARE IN MILLIMETRES UNLESS OTHERWISE NOTED.

No.	REVISIONS	BY	DATE
Approved: ORIGINAL SIGNED BY DAVE PALSAT Executive Director Roadway Engineering Branch TRANSPORTATION			
Date:			
OBSOLETE April 15, 2005 Refer to 4.2M16			
REINFORCED CONCRETE ROADWAY BARRIER FEMALE CONNECTION DETAILS PRECAST 'F' SHAPE			
Prepared By: L.T.	Checked By: B.K.	Scale: N.T.S.	Dwg No.: CB6-4.2 MI3