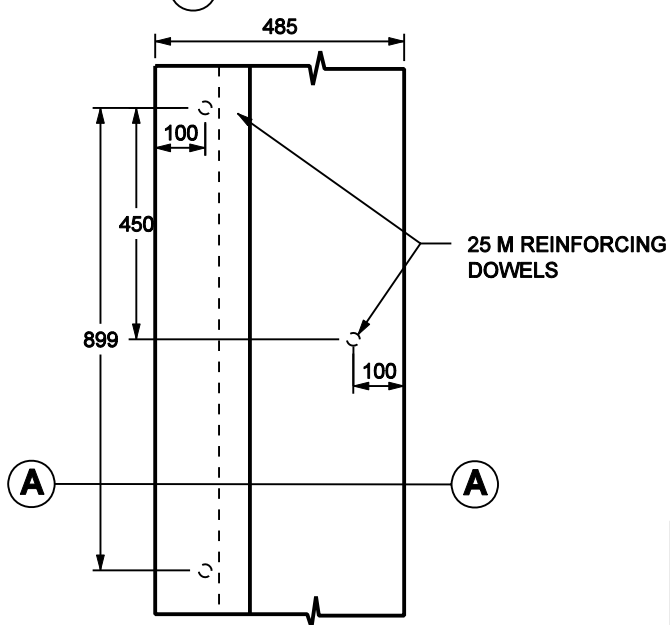
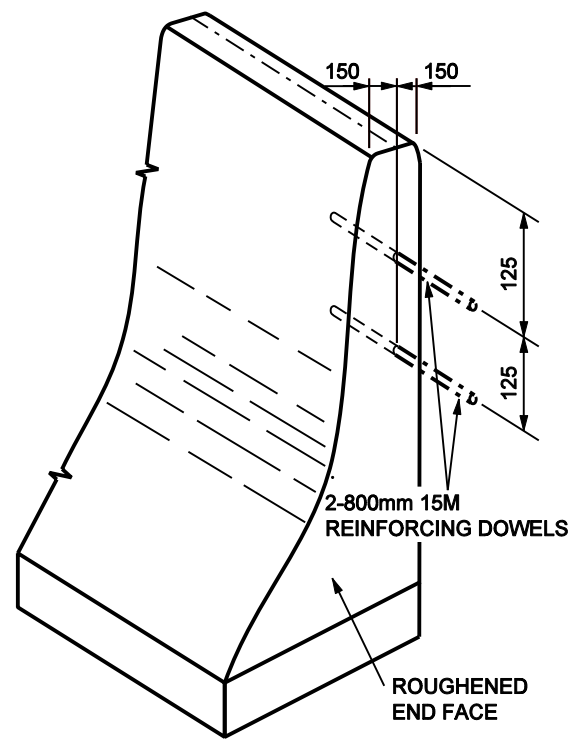


SECTION A



PLAN VIEW



CONSTRUCTION JOINT DETAIL

All dimensions in millimetres unless otherwise noted.

GENERAL NOTES

1. All concrete shall meet the requirements of the Specifications for Bridge Construction Section 4, Class C, except that slump shall be 20 ± 10 mm and minimum cement content shall be 335 kg/m^3 .
2. All reinforcement dowels shall be epoxy coated.
3. All exposed concrete shall have a smooth surface free from imperfections.
4. Exposed surfaces shall have an approved sealer applied in accordance with manufacturer's recommendations.
5. Half F barrier is for use with earth fill as shown.
6. No longitudinal reinforcement required.
7. Tooled or saw cut all around every 3m (min. 50mm deep x 3-6mm wide).
8. No joint sealer required.
9. Earth fill shall be suitable material as indicated under 2.3.2 of the Standard Specification for Highway Construction.

No.	REVISIONS	BY	DATE

Approved:
Original signed by
Allan Kwan
Executive Director,
Technical Standards Branch

Date: SEPTEMBER, 2004

SUPERSEDED

**SLIP-FORMED CONCRETE BARRIER
HALF F-SHAPE**

Prepared By: M.T	Checked By: B.K	Scale: N.T.S.	Dwg No.: CB6-4.3M3A
------------------	-----------------	---------------	---------------------