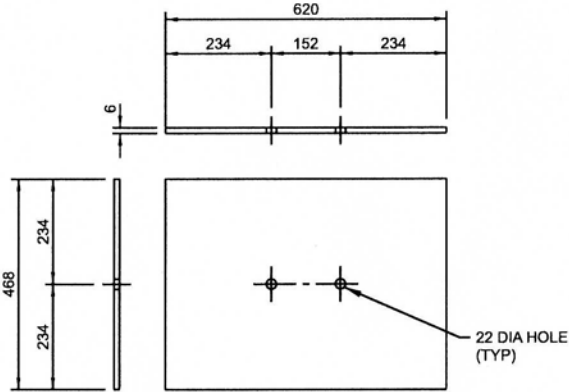


**FOUNDATION TUBE**

**NOTE:**

WOOD POST SHOULD BE ABLE TO SLIDE INTO THE TOP OF FOUNDATION TUBE SO THE ACTUAL INSIDE DIMENSIONS OF FOUNDATION TUBE CAN NOT BE LESS THAN 190x140.



**FOUNDATION TUBE SOIL PLATE**

△			
△			
No.	REVISIONS	BY	DATE

Approved:  
  
 Executive Director,  
 Technical Standards Branch

Date: NOVEMBER, 2007



**FOUNDATION TUBE AND FOUNDATION TUBE SOIL PLATE DETAILS FOR W-BEAM AND THRIE BEAM CABLE ANCHOR TERMINAL**

ALL DIMENSIONS ARE IN MILLIMETRES UNLESS OTHERWISE INDICATED.

Prepared By: MO	Checked By: WS	Scale: NTS	Dwg No.: <b>RDG-B1.3</b>
-----------------	----------------	------------	--------------------------