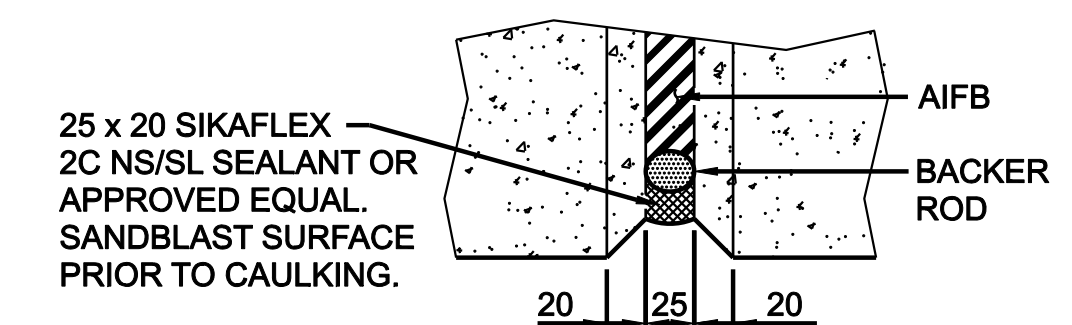
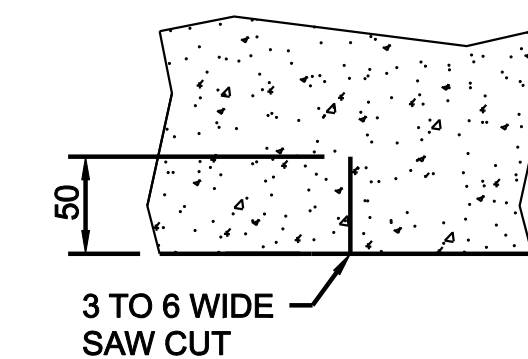


NOTES:

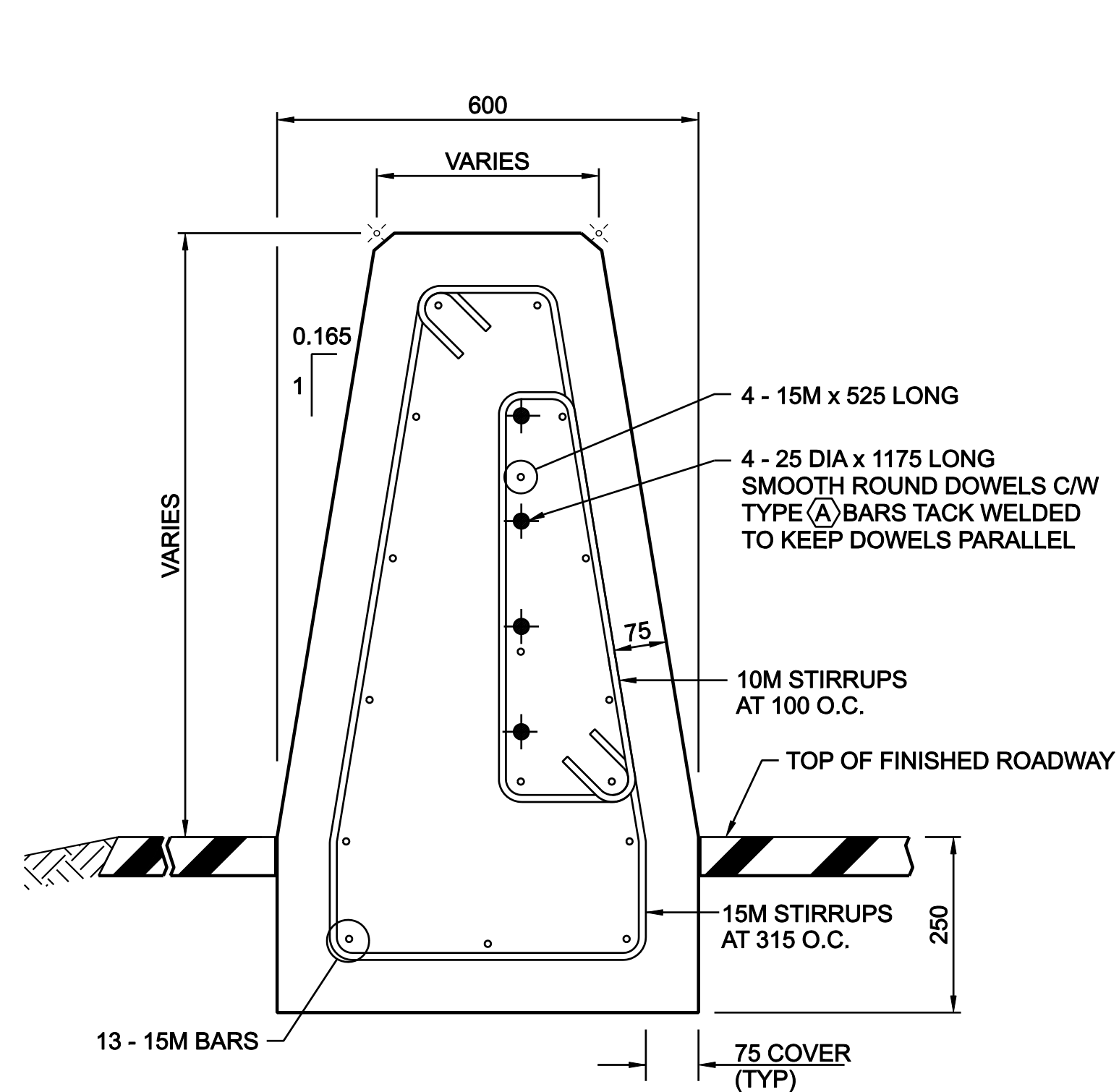
- DIAMETERS OF ALL BENDS AND DETAILS OF ALL HOOKS, UNLESS NOTED OTHERWISE, SHALL CONFORM TO THE RECOMMENDED SIZES DETAILED IN THE REINFORCING STEEL MANUAL OF STANDARD PRACTICE, FIRST CANADIAN EDITION 1992, PUBLISHED BY THE REINFORCING INSTITUTE OF CANADA.
- REINFORCING STEEL SHALL BE IN ACCORDANCE WITH CAN/CSA-G30.18M92 "BILLET STEEL BARS FOR CONCRETE REINFORCEMENT".
- ALL REINFORCING STEEL SHALL BE GRADE 400 UNLESS NOTED OTHERWISE.
- SMOOTH ROUND DOWELS SHALL BE ASTM GRADE A36, OR APPROVED EQUAL, WITH A MINIMUM YIELD STRENGTH OF 250 MPa.
- ALL REINFORCEMENT SHALL BE EPOXY COATED.
- ROADSIDE CONCRETE BARRIER SHALL BE MODIFIED CLASS C (MINIMUM 28 DAY COMPRESSIVE STRENGTH OF 35 MPa.)
- ALL CONCRETE CORNERS SHALL HAVE A 20 CHAMFER OR FILLET UNLESS NOTED OTHERWISE.
- ALL REINFORCING STEEL SHALL HAVE 75 CLEAR COVER UNLESS NOTED OTHERWISE.



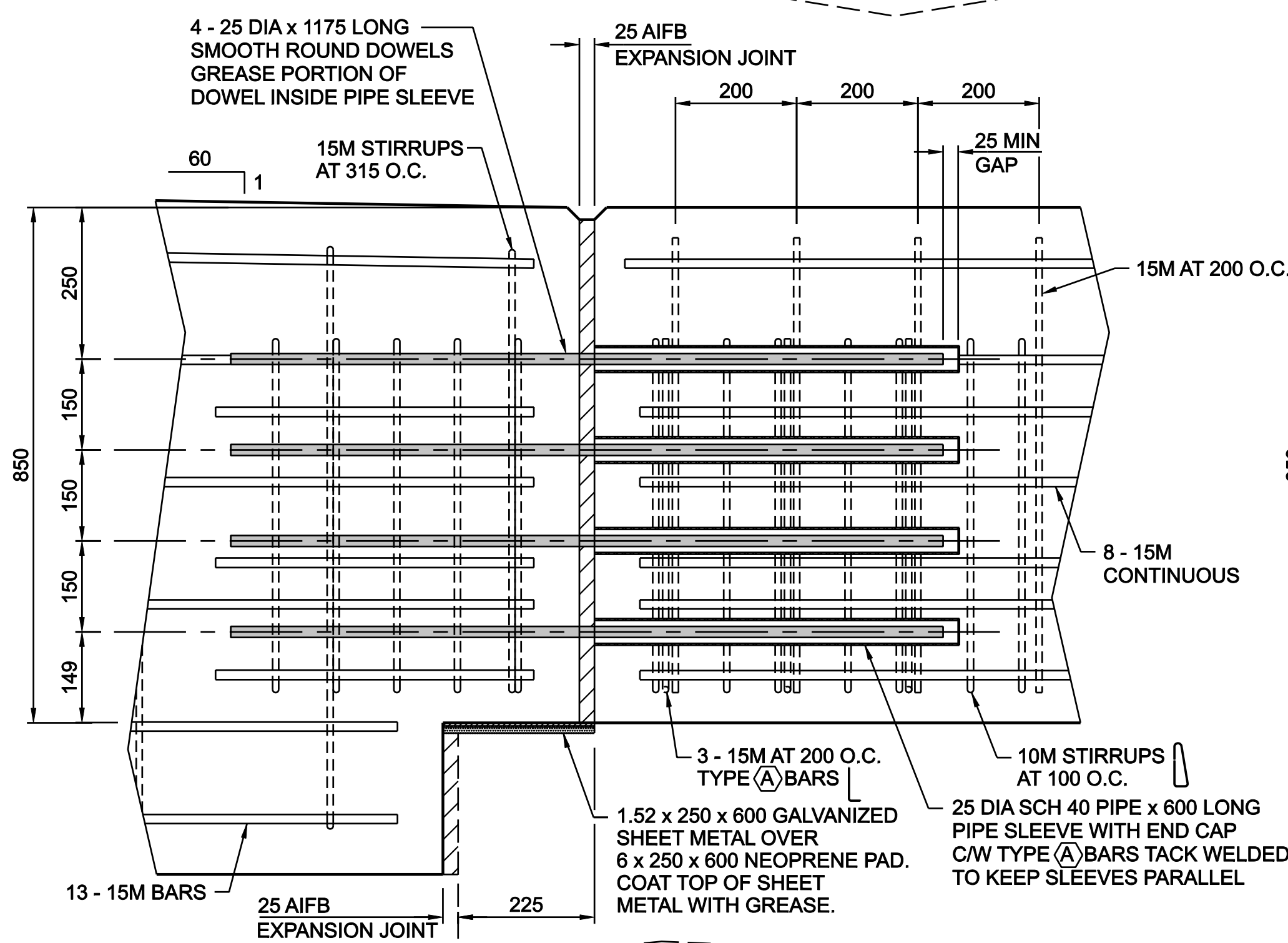
EXPANSION/CONSTRUCTION JOINT DETAIL



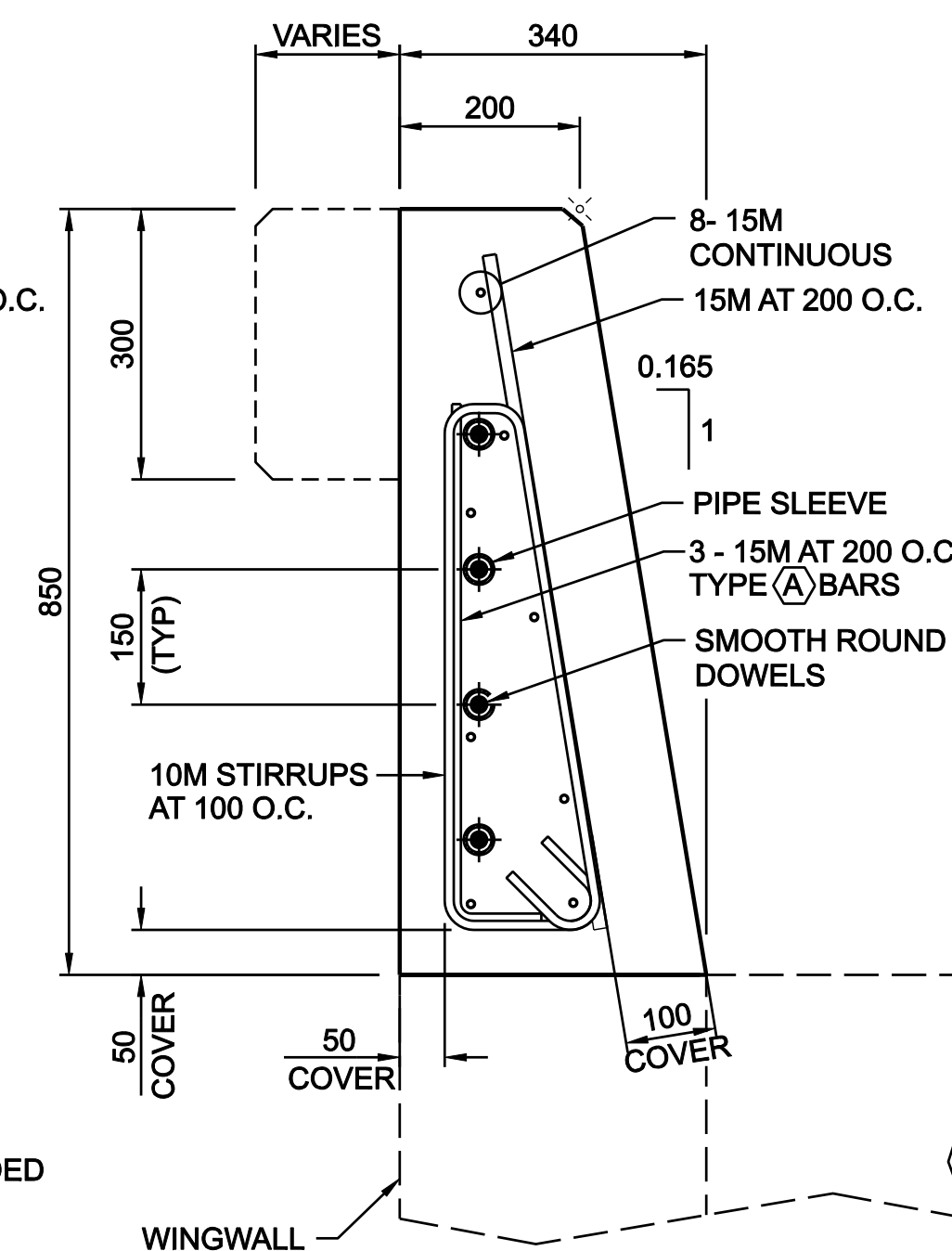
CONTRACTION JOINT DETAIL



SECTION A
ROADSIDE CONCRETE BARRIER



SECTION B



SECTION C
BRIDGE BARRIER

* WORK THIS DRAWING WITH S-1650-00

No.	REVISIONS	BY	DATE
2			
1			

Approved:	
Allan Kwan Executive Director, Technical Standards Branch	Alberta INFRASTRUCTURE AND TRANSPORTATION
Date: NOVEMBER, 2007	

TL-4 SINGLE SLOPE CONCRETE BARRIER TRANSITION TO PL-2 STANDARD BRIDGE CONCRETE BARRIER

Prepared By: MO	Checked By: WS	Scale: N.T.S.	Dwg No.: RDG-B6.14
-----------------	----------------	---------------	--------------------

ALL DIMENSIONS ARE IN MILLIMETRES UNLESS OTHERWISE INDICATED.