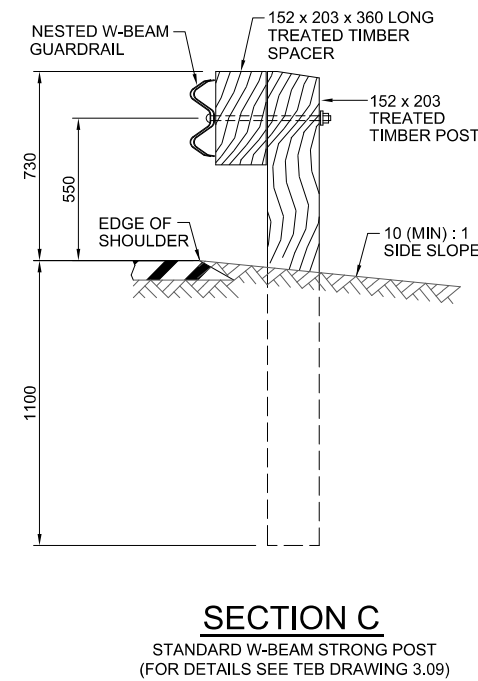
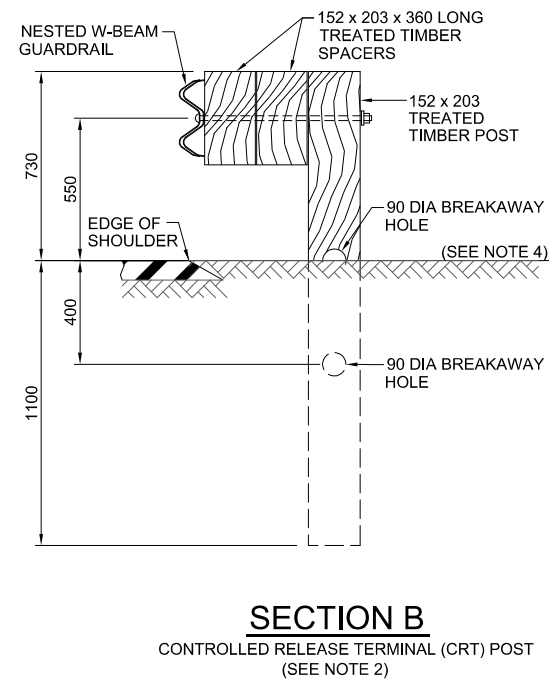
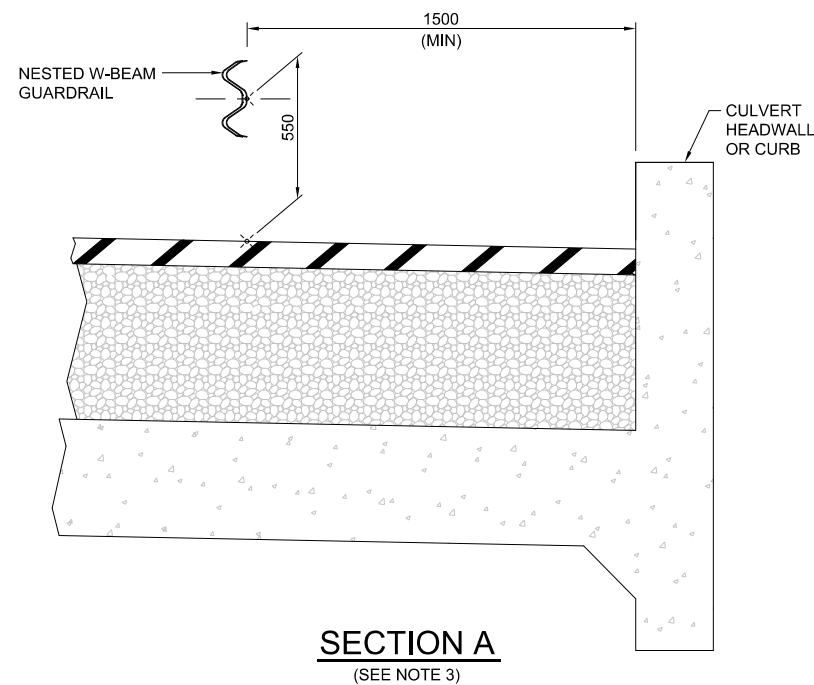


NOTES:

1. 7620 RAIL LENGTHS MAY BE USED TO ELIMINATE THE INTERMEDIATE LAP WITHOUT A POST. DO NOT PLACE A LAP WITHOUT A POST UNLESS NEEDED DUE TO LENGTH OF GAP.
2. POST 1 THRU 6 ARE CRT POSTS WITH TWO BLOCKOUTS. (SEE SECTION B FOR DETAILS)
3. INSTALL THE BACK FACE OF THE NESTED GUARDRAIL A MINIMUM OF 1500 FROM THE FACE OF THE CURB-LIKE HEADWALL.
4. MAINTAIN FLAT SIDE SLOPE GRATING AT POST LOCATIONS.
5. LAP ALL RAIL SECTIONS IN THE DIRECTION OF TRAFFIC FLOW.
6. ALL FITTINGS AND HARDWARE SHALL BE GALVANIZED.
7. THIS DESIGN MEETS NCHRP REPORT 350 EVALUATION CRITERIA FOR TL-3



ALL DIMENSIONS ARE IN MILLIMETRES UNLESS OTHERWISE INDICATED.

No.	REVISIONS	BY	DATE

Approved:
Allan Kwan
Executive Director,
Technical Standards Branch

Date: NOVEMBER, 2007



**TL-3 W-BEAM
GUARDRAIL PLACEMENT
AT MINOR STRUCTURES
AND BOX CULVERTS**

Prepared By: MO Checked By: WS Scale: N.T.S. Dwg No.: **RDG-B7.1**