

**SINGLE SLOPE MEDIAN BARRIER TRANSITION ISOMETRIC**

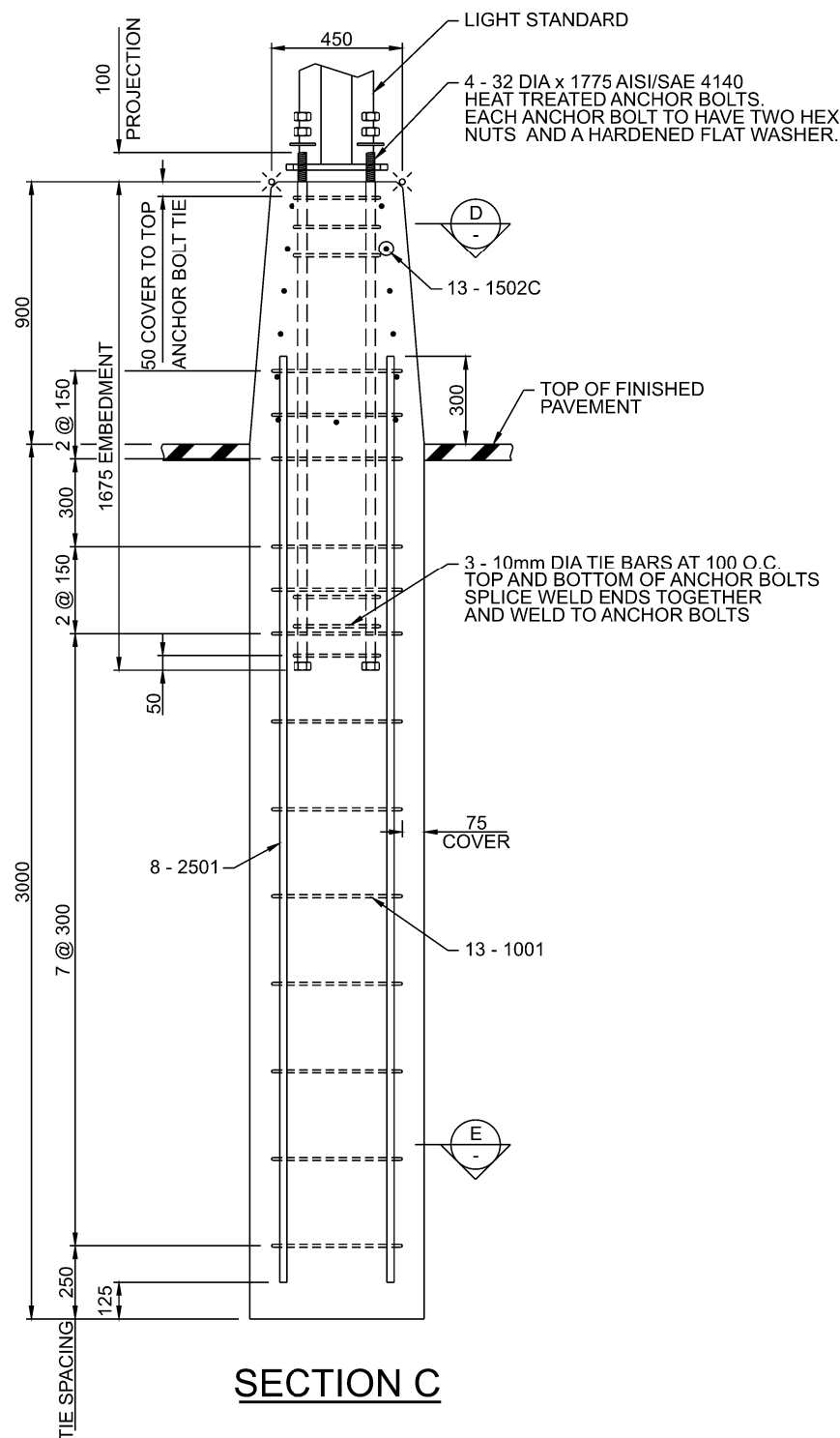


BAR LIST: TRANSITION BARRIER								
MARK	SIZE	NO.	TYPE	X	Y	Z	LENGTH	MASS
1001	10	13	A	450	-	-	2060	21
1501C	15	24	B	LENGTH: X = 480 Y = 800 Z = VARIES FROM 210 TO 353 IN INCREMENTS OF 13			2660 (AVG)	100
*1502C	15	13	STR	-	-	-	2750	56
2501	25	8	STR	-	-	-	3175	100
2502C	25	12	STR	-	-	-	1000	47

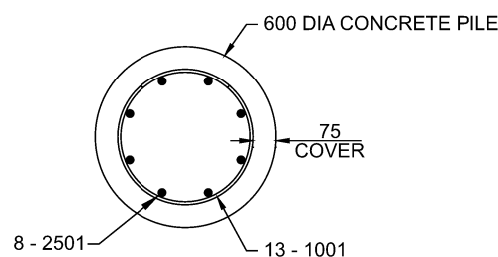
\*FIELD BEND TO SUIT  
 PLAIN TOTAL kg = 121  
 EPOXY COATED TOTAL kg = 203  
 TOTAL kg = 324

**1 BAR LIST NOTES:**

- DIAMETERS OF ALL BENDS AND DETAILS OF ALL HOOKS, UNLESS NOTED OTHERWISE, SHALL CONFORM TO THE RECOMMENDED SIZES DETAILED IN THE LATEST EDITION OF CAN/CSA-S6 AND CAN/CSA-A23.3
- ALL REINFORCING STEEL SHALL COFORM TO CAN/CSA-G30.18, GRADE 400 (UNLESS NOTED OTHERWISE)
- "C" DENOTES EPOXY COATED REINFORCEMENT.

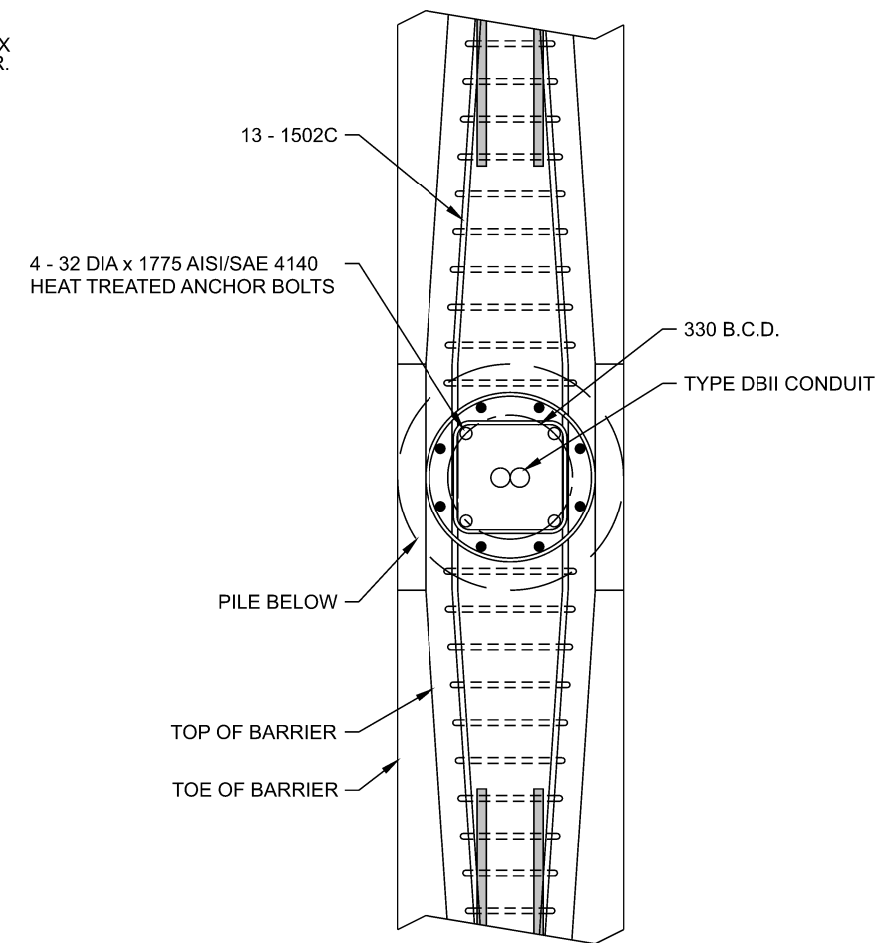


**SECTION C**



**SECTION E**

ALL DIMENSIONS ARE IN MILLIMETRES UNLESS OTHERWISE INDICATED.



**SECTION D**

△	NOTES, BAR LIST TO CAN/CSA-S6 AND CAN/CSA-A23.3	RI	10/19
No.	REVISIONS	BY	DATE

Approved:  
 Allan Kwan  
 Executive Director,  
 Technical Standards Branch  
 Date: NOVEMBER, 2007



**TL-4 SINGLE SLOPE  
 CONCRETE BARRIER TRANSITION  
 AT MEDIAN LIGHT STANDARD  
 SHEET 2 OF 2**

Prepared FS    Checked By: RI    Scale: N.T.S.    Dwg No.: **RDG - B7.3**