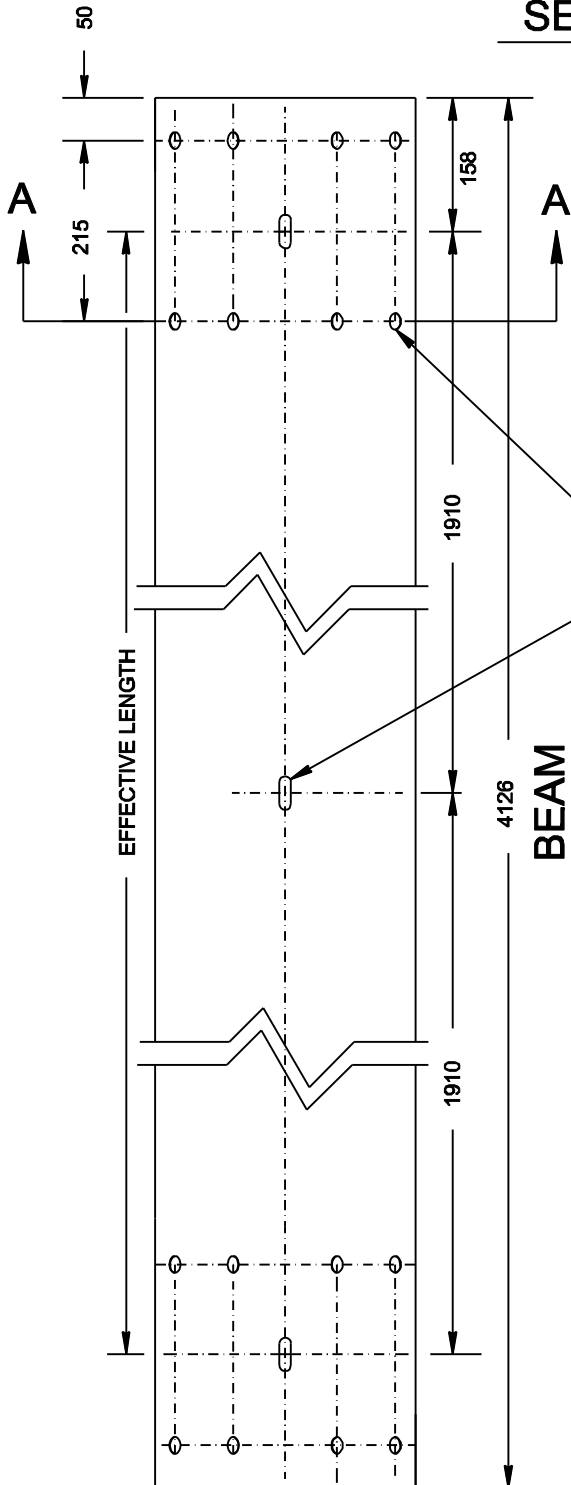


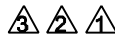
SECTION A-A



16 - SLOTTED HOLES
23 X 29

3 - SLOTTED HOLES
19 X 63

EFFECTIVE LENGTH = 3820 (12' 6")



A FINISHED THICKNESS OF RAIL TO BE 2.82 mm
NOMINAL STEEL AND HOT DIPPED GALVANIZED
AFTER FABRICATION.

FOR 955 POST SPACING, SPECIFY RAIL ELEMENT
WITH HOLES AT 955 CENTRES.

△	Revised Note	B.K.	08/05/07
△	Steel Thickness	B.K.	01/03/06
△	Steel Thickness	B.K.	12/07/05
No.	REVISIONS	BY	DATE

Approved:
Original approved by
Traffic Operations Branch
Alberta Transportation and Utilities
Executive Director,
Technical Standards Branch



Date: NOVEMBER 11, 1992

**W - BEAM GUARDRAIL
HARDWARE
RAIL DETAIL**

All dimensions are in millimetres unless otherwise indicated.

Prepared By: M.T	Checked By: B.K	Scale: N.T.S.	Dwg No.: TEB 3.02
---------------------	--------------------	------------------	----------------------