

WORK ZONE BULLETIN #1/2017

“Speed Fines Double” Signage

Summary

This Bulletin is issued to inform consultants, contractors, and department staff of the department’s practice for the use of “Speed Fines Double” signs.

The sign was first introduced in “Design Bulletin #41/2006” to remind motorists of legislated penalties for speeding in active work zones. The Design Bulletin was superseded in 2008 when Alberta Transportation’s *Traffic Accommodation in Work Zones* was released. While the manual describes how to use and place “Speed Fines Double” signs, it does not identify the situations where the signs should be applied. This bulletin provides a criteria as well as a revised signing sequence.

Key Changes

The existing Section 10. Double Fines in Work Zones of *Traffic Accommodation in Work Zones* is rescinded and replaced with the following:

Section 10. Double Fines in Work Zones

“Double Fine Begins” and “Double Fine Ends” signs are used to define the active work areas where the workers are actually present. Where there are no active work areas, these signs must be covered and/or removed. If the work zone uses transition speed zones, the “Double Fine” signs are placed in conjunction with the lowest work zone speed limit. Drawing TCS-B-4.4 shall be used as a reference when incorporating “Double Fine Begins” and “Double Fine Ends” signs into the project signage strategy.

The signs must be used for all stationary projects that are five days or more, where the highway speed limit is greater than 70 km/h when not under construction. The signs can be used for shorter duration projects, mobile work, or lower speed situations where practical.

In situations where the signs are not used but workers are present, motorists can still be issued double fines. The purpose of the signs is only to reinforce and remind drivers of existing legislation.

Effective Date

May 9, 2017

Contact

Elena Yin at (780) 415-4827

Operations, Programming and Planning Branch, Alberta Transportation

References

“Design Bulletin #41/2006” (superseded)

[Traffic Accommodation in Work Zones \(2008 edition\)](#)

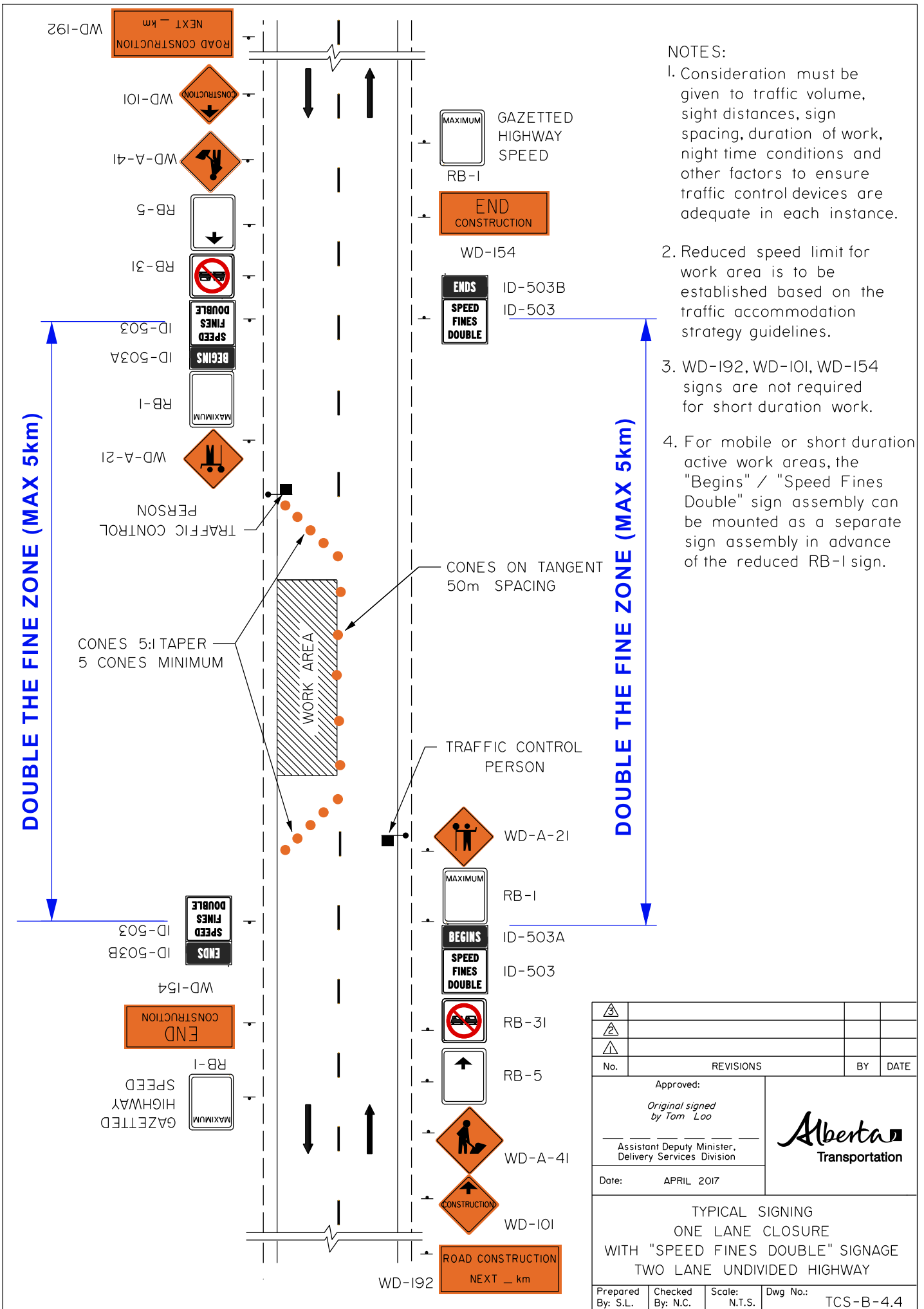
Approved

*Original signed
by Tom Loo*

Tom Loo
Assistant Deputy Minister, Delivery Services Division

NOTES:

1. Consideration must be given to traffic volume, sight distances, sign spacing, duration of work, night time conditions and other factors to ensure traffic control devices are adequate in each instance.
2. Reduced speed limit for work area is to be established based on the traffic accommodation strategy guidelines.
3. WD-192, WD-101, WD-154 signs are not required for short duration work.
4. For mobile or short duration active work areas, the "Begins" / "Speed Fines Double" sign assembly can be mounted as a separate sign assembly in advance of the reduced RB-1 sign.



No.	REVISIONS	BY	DATE

Approved:
Original signed by Tom Loo
 Assistant Deputy Minister,
 Delivery Services Division

Date: APRIL 2017



TYPICAL SIGNING
 ONE LANE CLOSURE
 WITH "SPEED FINES DOUBLE" SIGNAGE
 TWO LANE UNDIVIDED HIGHWAY

Prepared By: S.L.	Checked By: N.C.	Scale: N.T.S.	Dwg No.: TCS-B-4.4
-------------------	------------------	---------------	--------------------