

54.14 SUPPLY AND INSTALL CLUSTER FRAMES

54.14.1 GENERAL

The Work consists of the removal and disposal of existing cluster frames where applicable and supply and installation of new metal cluster frames on sign posts.

54.14.2 MATERIALS

The Contractor shall supply cluster frames suitable for the installation of multiple signs of up to 1.5 square metres in accordance with diagram MS-001. The frames shall be painted with rust resistant aluminum paint or a metal primer and aluminum paint suitable to the Engineer.

The Contractor shall supply all bolts and mounting hardware required to mount the signs to the frames and the frames to the posts.

54.14.3 EQUIPMENT

The Contractor shall supply all equipment and small tools necessary to complete the Work.

54.14.4 PROCEDURE

Traffic control and signing shall be performed in accordance with Specification 55.1, Traffic accommodation and Temporary Signing.

When the installation is at an existing site, the Contractor shall remove existing signs from cluster frames, salvage or dispose of the signs as directed, and remove and dispose of the existing frames.

The new frames shall be installed perpendicular to and facing the approaching traffic lane and shall be securely fastened to the post in accordance with drawing TEB 1.69.

54.14.5 TIME TO COMPLETE

The Contractor shall complete the Work within 30 days of the issuance of the Work Order.

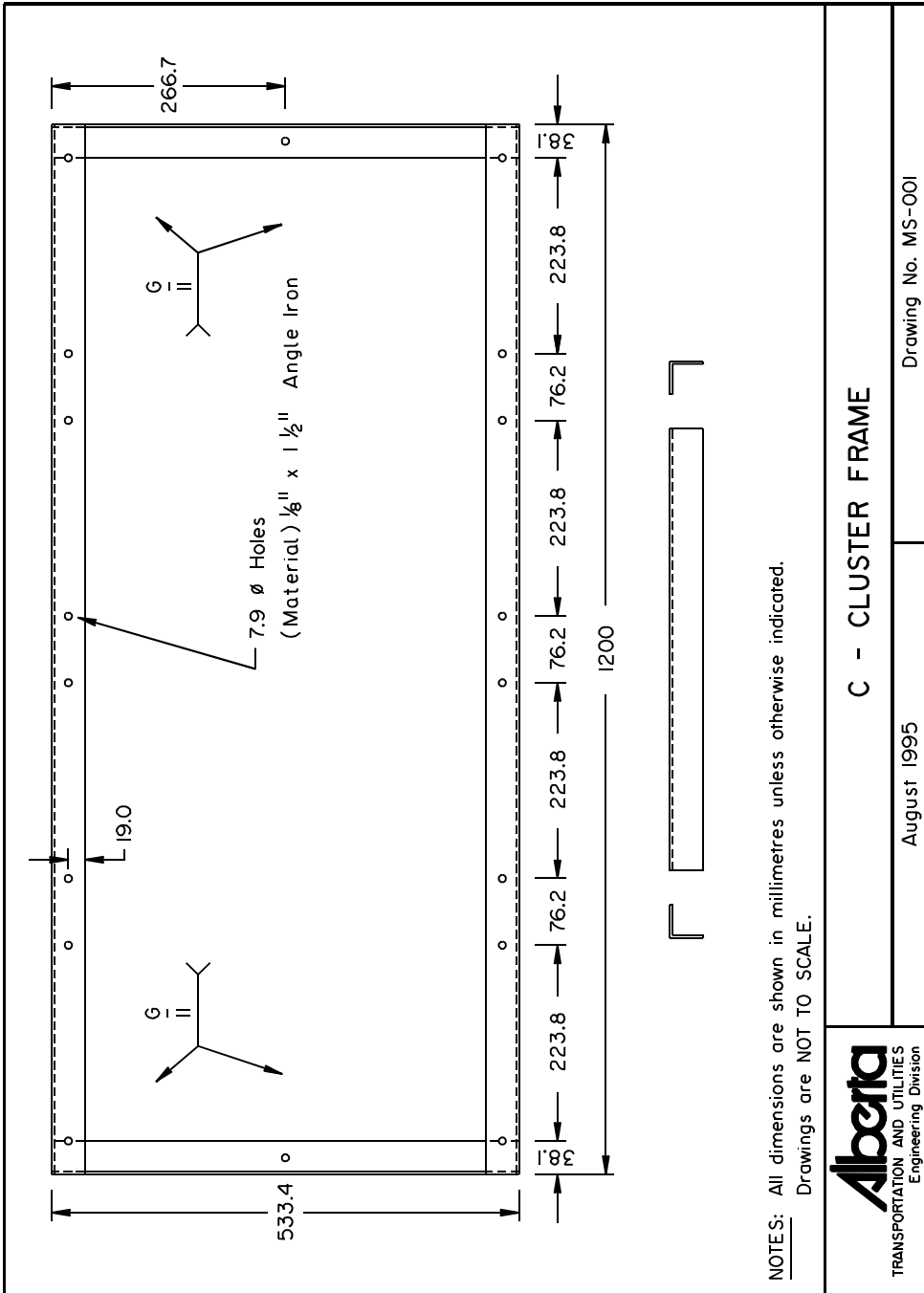
54.14.6 MEASUREMENT AND PAYMENT

Measurement will be made of the number of cluster frames installed.

Payment will be made at the unit price bid per frame for "Supply and Install Cluster Frames". This payment will be full compensation for the supply of the frames, removal and disposal of existing frames when necessary, installation of the new cluster frames and all labour, material, equipment, tools and incidentals necessary to complete the Work.

54.14.7 WARRANTY

The warranty period for this work shall be 60 days.



Alberta
TRANSPORTATION AND UTILITIES
Engineering Division

C - CLUSTER FRAME

August 1995

Drawing No. MS-001