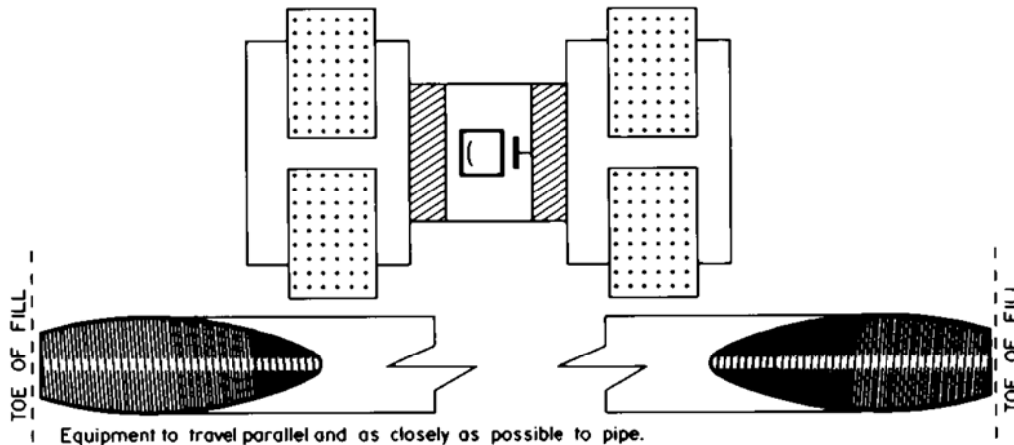
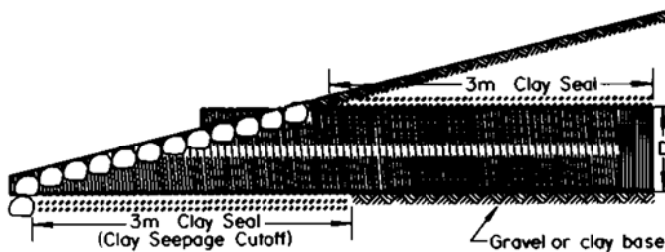


EXCAVATION, CULVERT BASE AND BACKFILLING



COMPACTION (PLAN VIEW)



Clay seal for seepage to be placed at both ends, for a length of 3m, and to the top of the pipe.

CLAY SEAL DETAIL

No.	REVISIONS	BY	DATE

Approved:

Carina B...

Executive Director,
Roadway Engineering Branch

Date: 9/4/22

Alberta
TRANSPORTATION
AND UTILITIES
Engineering Division

SUPERSEDED
March 31, 2022

CORRUGATED METAL PIPE
CULVERT INSTALLATION
(OPEN-CUT METHOD)

Prepared By: LT	Checked By: B.K.	Scale: N.T.S.	Dwg No.: CB6-2.4 MI
-----------------	------------------	---------------	---------------------

Graphics File: DE[200.22]0624m01.man