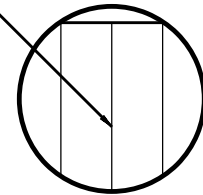


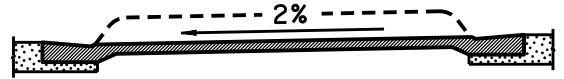
TOOLED GROOVES 5mm WIDE
BY 10mm DEEP.
SPACING AT 150mm o.c.



DETAIL 1

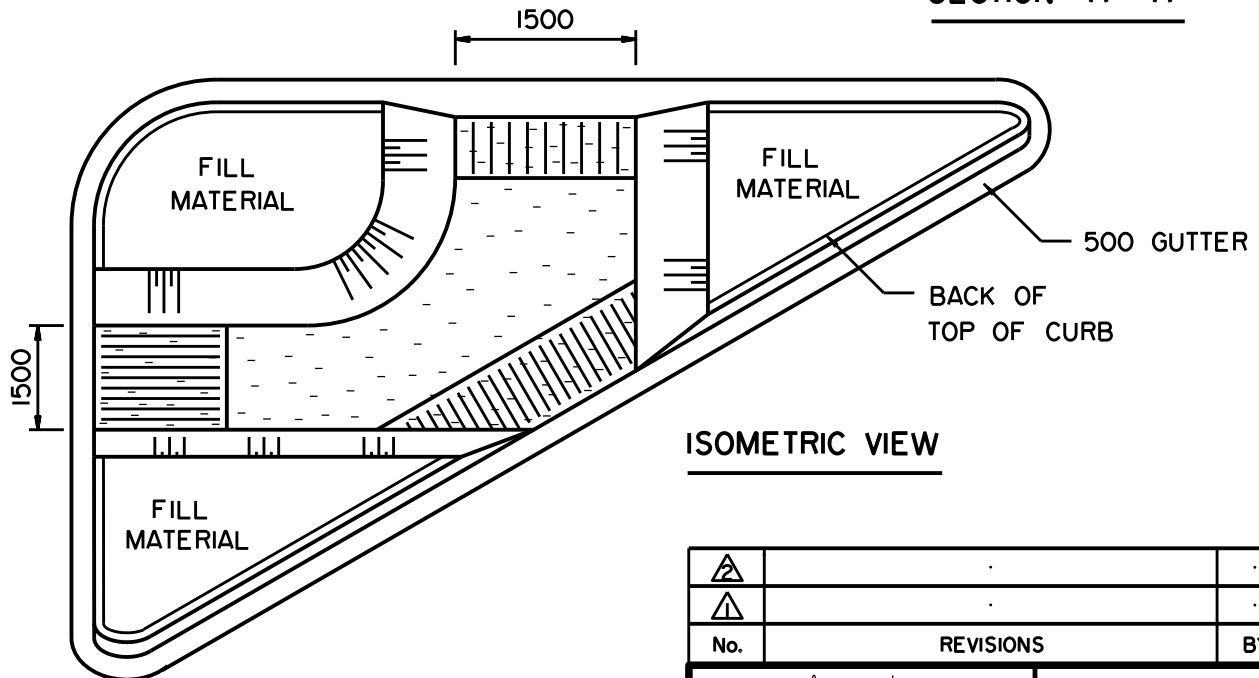


LESS THAN 2% PAVEMENT SLOPE



2% OR GREATER PAVEMENT SLOPE

SECTION "A"- "A"



ISOMETRIC VIEW

Notes:

1. All dimensions are expressed in millimetres unless otherwise noted.
2. Where crosswalks are controlled by signals with a push-button system, the sidewalks and ramps must allow access by wheelchair to the push-button.
3. Add IOM rebar to the ends of all bullnoses, medians and traffic islands.
4. Fill material for islands shall be earth, concrete or asphalt concrete as specified.
5. Sidewalk and ramps shall be concrete.

▲			
▲			
No.	REVISIONS	BY	DATE

Approved:

ORIGINAL SIGNED
BY ALLAN KWAN

Executive Director
Roadway Engineering Branch

Date: JULY 2, 2011

OBsolete
March 2022

**TYPICAL SIDEWALK AND
CROSSWALK LAYOUT OF SMALLER
ISLANDS AND MEDIANS
LESS THAN 6m WIDE**

Prepared By: R.T.	Checked By: B.K.	Scale: N.T.S.	Dwg No: CB6-4.2M9I
----------------------	---------------------	------------------	-----------------------