



June 2018

with Carrier Services

International Roadcheck 2018

Alberta’s Commercial Vehicle Enforcement officers took part in International Roadcheck, June 5 to 7. International Roadcheck is a major initiative by members of the Commercial Vehicle Safety Alliance (CVSA), which includes Canada, Mexico and the United States.

Almost 10,000 CVSA-certified officers inspected commercial vehicles across North America between June 5 and 7, 2018, with a special focus on hours of service compliance.

This year, Roadcheck in Alberta was conducted at the following locations:

- Whitecourt Vehicle Inspection Station;
- Atmore Vehicle Inspection Station;
- Leduc Vehicle Inspection Station;
- Vermilion Vehicle Inspection Station;
- Strathmore Vehicle Inspection Station;
- Cheadle Mobile Inspection Station; and
- Calgary Airport (motorcoach).

During International Roadcheck, inspectors primarily conduct the North American Standard Level I Inspection, a 37-step procedure that includes an examination of both driver operating requirements and vehicle mechanical fitness.

The vehicle inspection includes checking brake systems, cargo securement, coupling devices, driveline/driveshaft components, exhaust systems, frames, fuel systems, lighting devices, steering mechanisms, suspensions, tires, van and open-top trailer bodies, wheels, rims and hubs, and windshield wipers. Additional items for buses include emergency exits, electrical cables and systems in the engine and battery compartments, and seating.

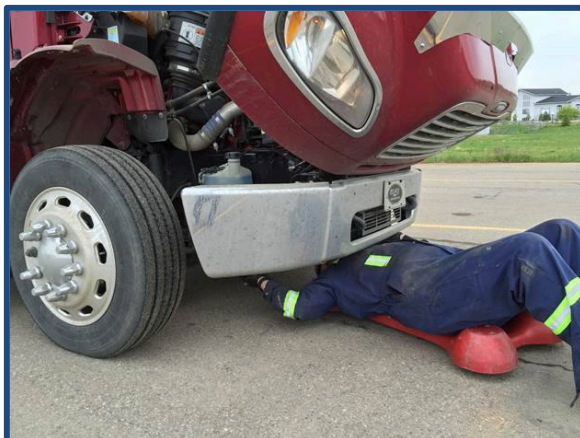
Drivers are asked to provide their operating credentials and hours-of-service documentation, and will be checked for seat belt usage.

If no critical inspection item violations are found during a Level I Inspection, a CVSA decal is applied to the vehicle, indicating that the vehicle successfully passed a decal-eligible inspection conducted by a CVSA-certified inspector.

If an inspector does identify critical inspection item violations, he or she may render the driver or vehicle out of service if the condition meets the North American Out-of-Service Criteria. This means the driver cannot operate the vehicle until the vehicle and/or driver qualification violation(s) are corrected.

For more information about International Roadcheck 2018, visit: <https://cvsa.org/news-entry/2018-roadcheck>.

This year’s focus: hours of service compliance



511 Alberta Launch on Schedule

In January, we provided an overview of the new 511 Alberta application which is scheduled to roll-out later this year.

IBI group has already laid out the new framework for the application, and the 511 Alberta staff members have been busy with testing the new system so that we can fine-tune the application before its anticipated launch in August, 2018.

In addition to the features we outlined in previous editions of On the Road with Carrier Services, the new platform is proving to be a much more robust and user-friendly application. The look and feel of the new system is much more like looking at a Google map. This will help users to map routes that cross over into jurisdictions outside of the Alberta highway network – including municipal and county roads, and even into other provinces and states. This allows

the redesigned 511 Alberta to be a one-stop shop for Albertans – alerting them to road conditions, construction and road incidents, and allowing them to plan a route without having to toggle back and forth between maps.

In addition to the features provided with the existing 511 Alberta site, the new site will include a layer showing traffic flow/speed, the location of maintenance vehicles, the ability to see what is on the Dynamic Messaging Signs (DMS), the locations of alternative fuel-locations, and the opportunity to personalize the experience.

This new product is sure to provide Albertans with a tool that will help them plan their travels and create a safer, more informed traveling public.

Visit 511 Alberta at <https://511.alberta.ca>.

Intervention Process Improvements

In March, 2018 Alberta Transportation announced its intentions to phase in a new carrier intervention policy. This new policy will enable the government to quickly and effectively address risks to the public on Alberta highways.

Since announcing the updated policy, the Carrier Services section of Alberta Transportation has made several changes to streamline the intervention process, including:

- Improvements to carrier correspondence (e.g. emails, letters, etc.);
- More consistent application of timelines and due dates for conditions issued to carriers with issues of non-compliance;
- No longer granting extensions for carriers that do not address issues of non-compliance by their specified due date(s);

- Replacement of older, administratively heavy processes with new, more efficient processes; and
- The implementation of quicker and more consistent decision making processes.

Alberta Transportation has moved into the next phase of implementation, which will include a more detailed look at the risk assessment process for carriers with issues of non-compliance.

The goal of implementing an improved risk assessment process is to more effectively identify and prioritize intervention actions based on the level of risk a carrier poses to the public.

For more information about the intervention process, visit: www.transportation.alberta.ca/670.htm.

Carrier Services, Alberta Transportation

4920 - 51 Street Red Deer, AB T4N 6K8

Phone: 403-340-5444 (toll-free in Alberta by first calling 310-0000) Fax: 403-340-4806

DID YOU KNOW?



Since the Transportation Safety Professionals Workshop was introduced in 2016, over 400 people have registered to learn more about National Safety Code requirements in Alberta.

This is a hands-on workshop designed to help carriers better understand how to implement safe operating strategies and stay in compliance with transportation legislation.

For more information, visit: www.transportation.alberta.ca/5607.htm



Fatigue is a complex issue that can result from increased hours of work, work-related stress, time spent driving, night shift driving, and other activities of the workplace. Fatigue may impact driver attention and alertness.

Managing fatigue and being proactive in your approach to fatigued driving can help minimize collisions. For more information, visit: <https://saferoads.com>