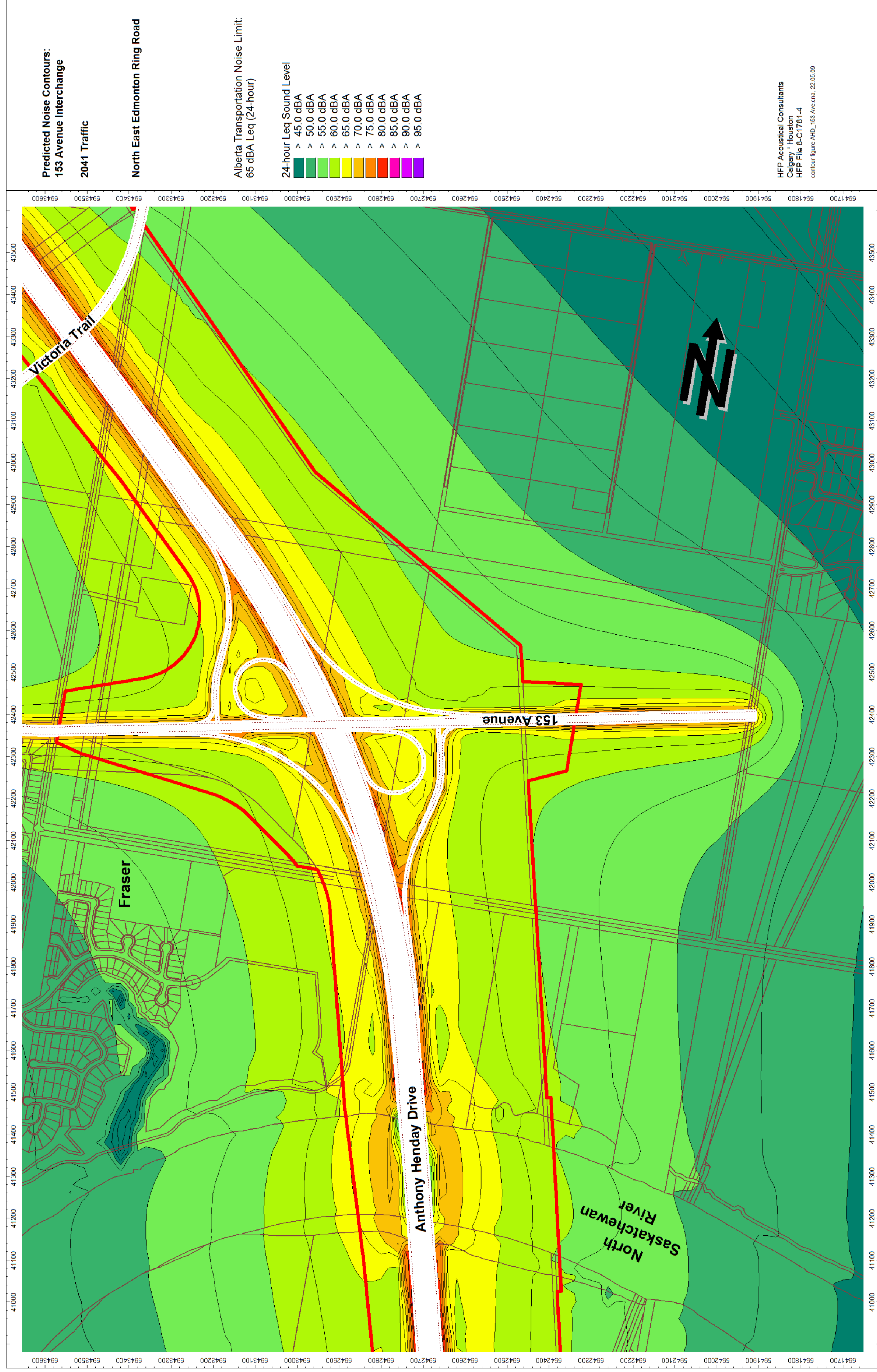
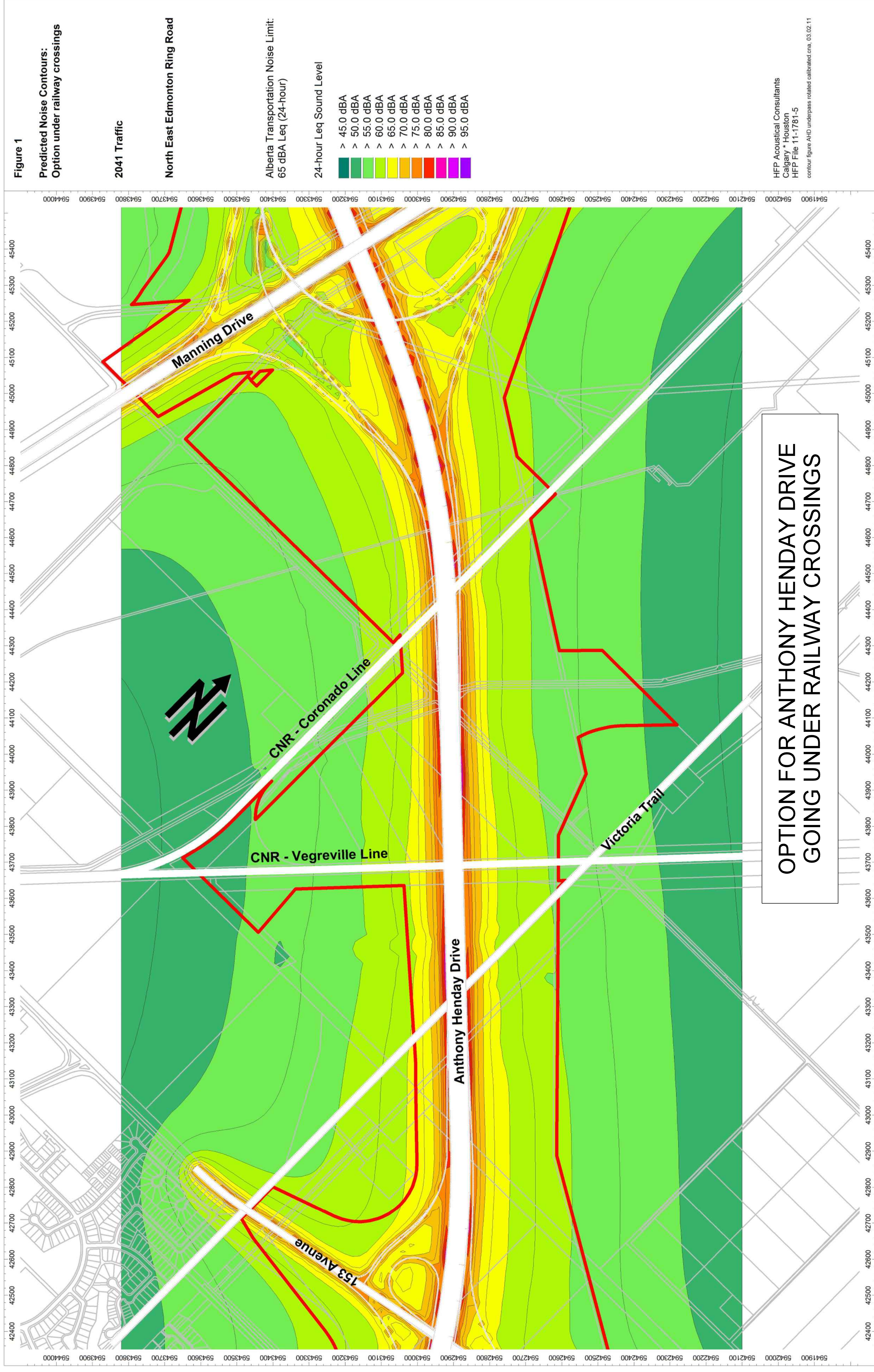


February 2011

# Predicted Noise Contours Sherwood Park Freeway & 17 Street - Anthony Henday Drive

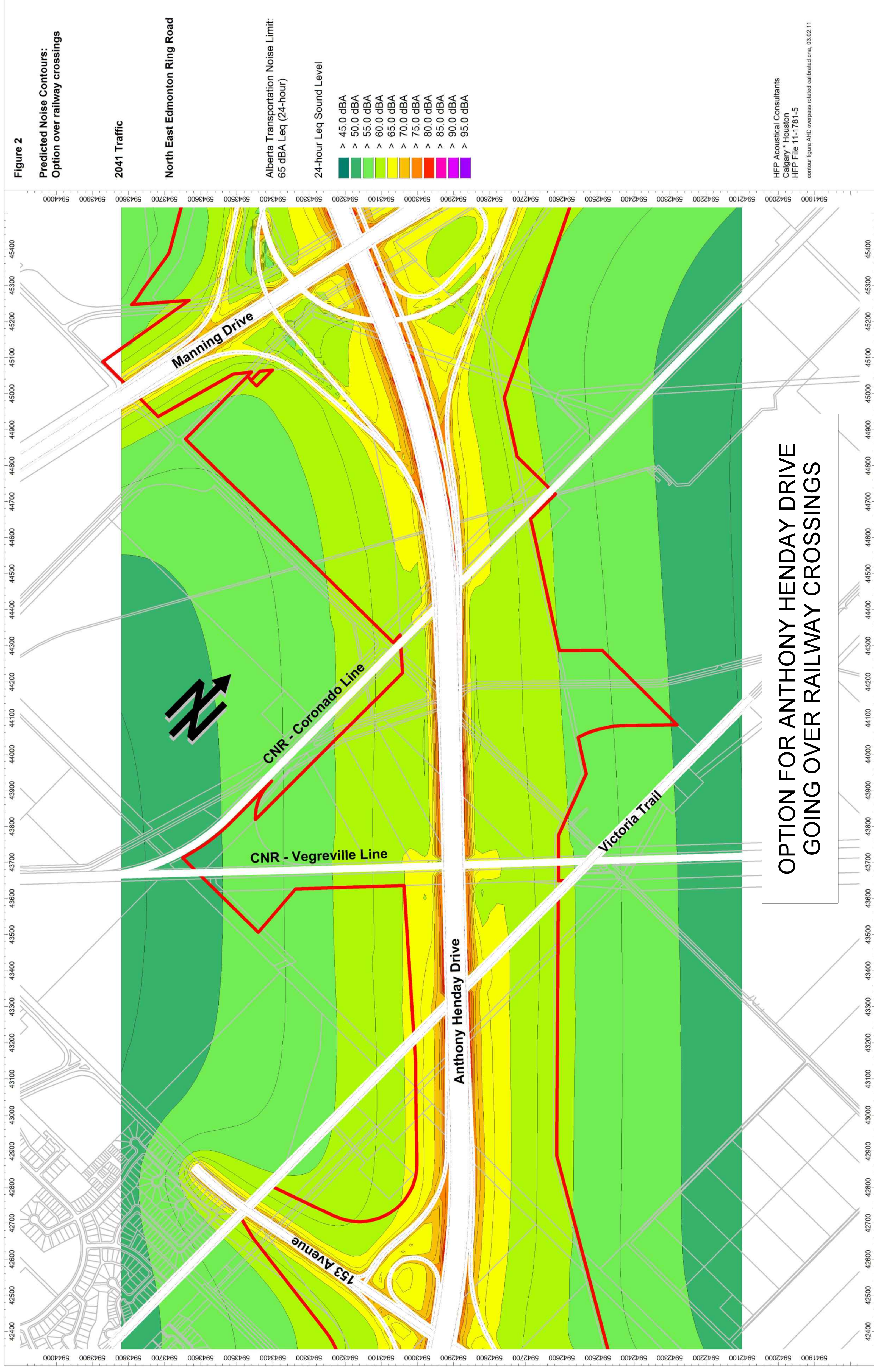


February 2011



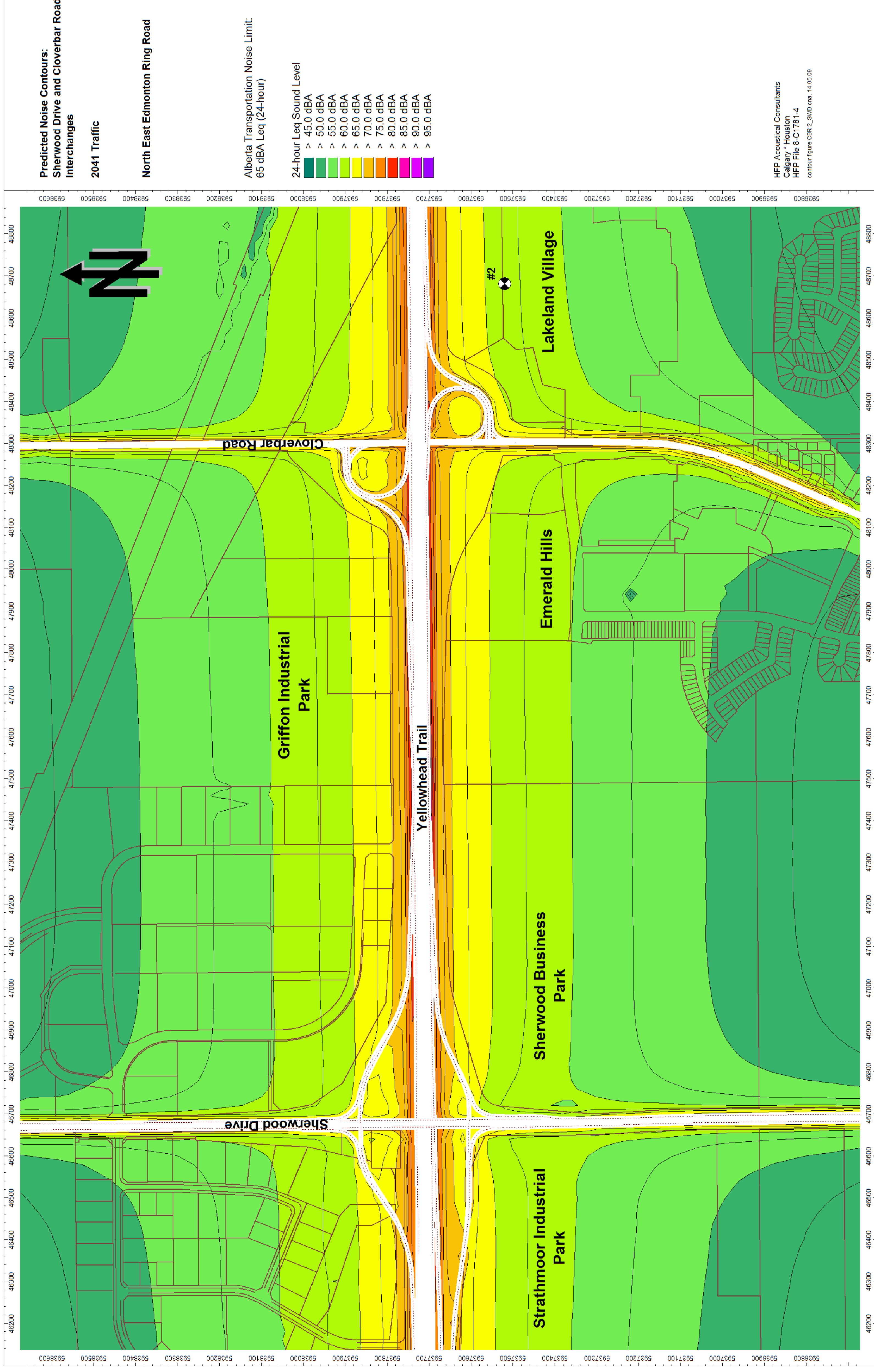
February 2011

# Predicted Noise Contours 153 Avenue to Manning Drive - Anthony Henday Drive



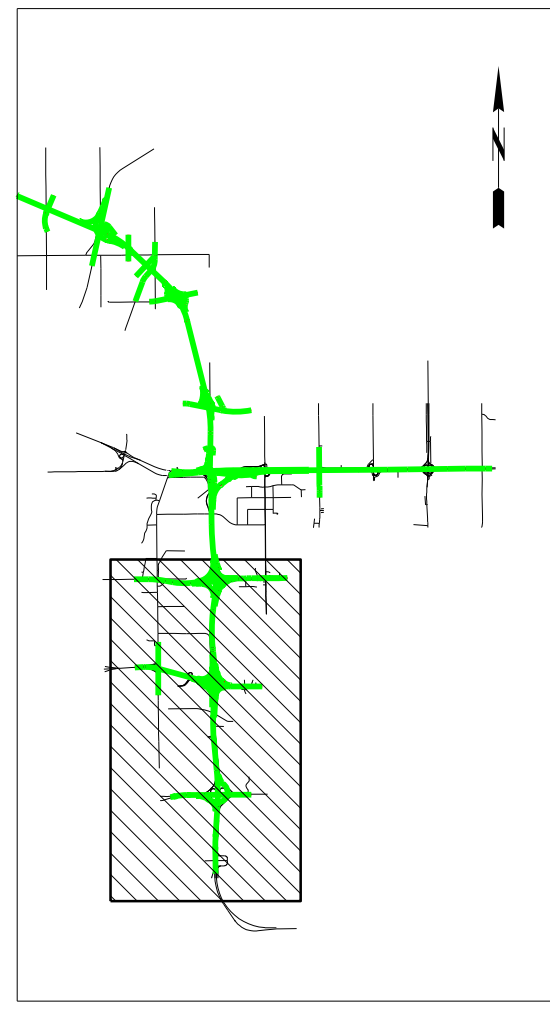
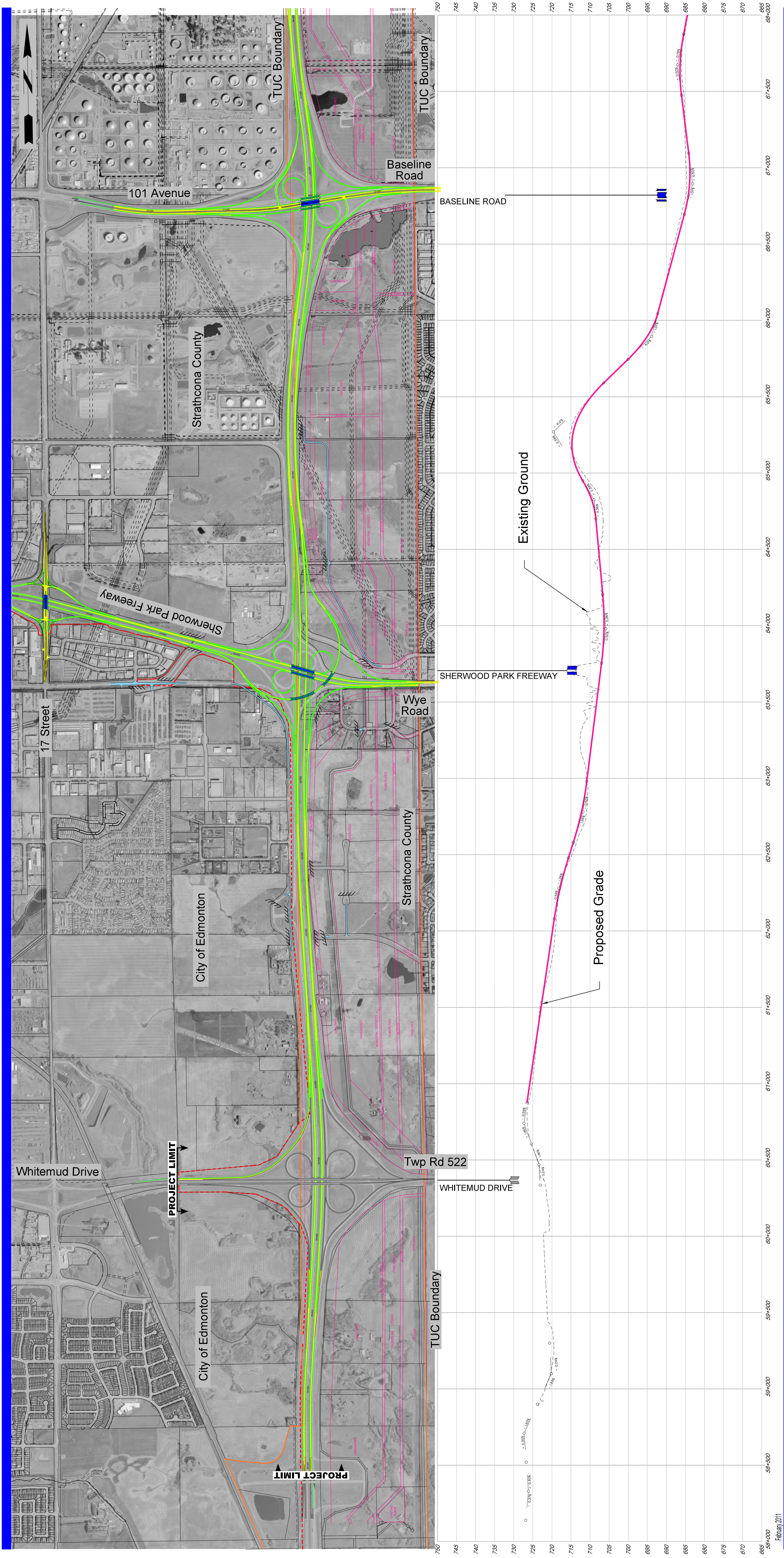
February 2011

**Predicted Noise Contours  
 153 Avenue to Manning Drive -  
 Anthony Henday Drive**



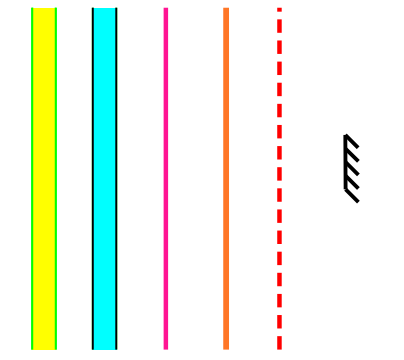
February 2011

# Predicted Noise Contours Sherwood Drive & Cloverbar Road - Yellowhead Trail



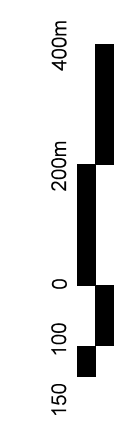
### Legend

- PROPOSED ANTHONY HENDAY DRIVE
- PROPOSED SERVICE ROAD
- LAND USE AREAS
- TRANSPORTATION AND UTILITY CORRIDOR (TUC)
- CITY BOUNDARY
- ROAD CLOSED

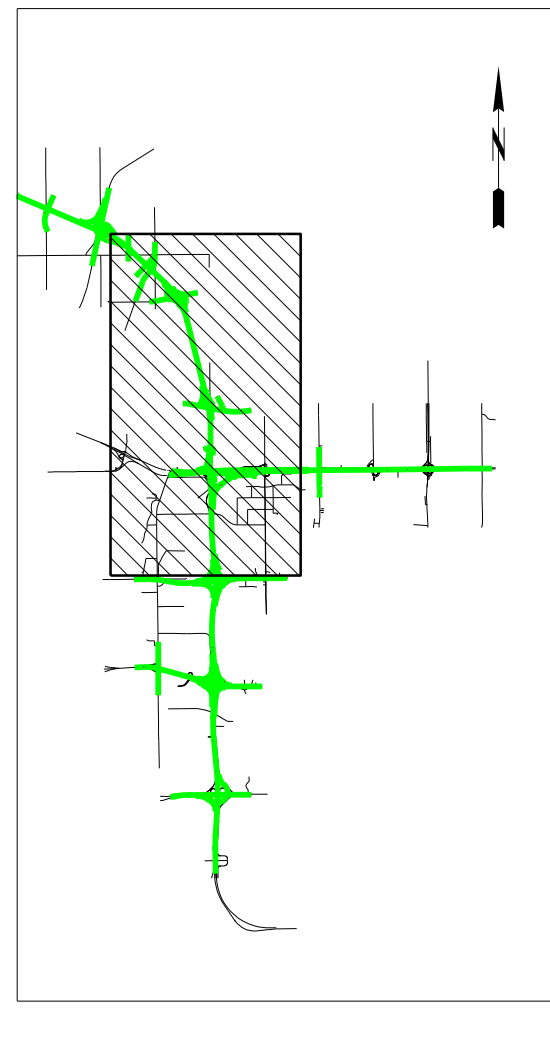
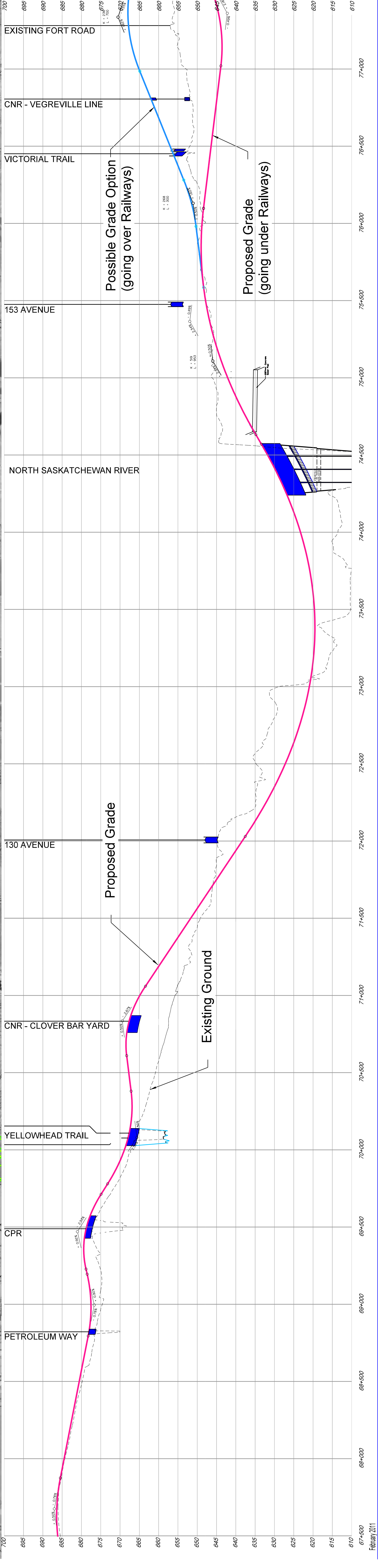
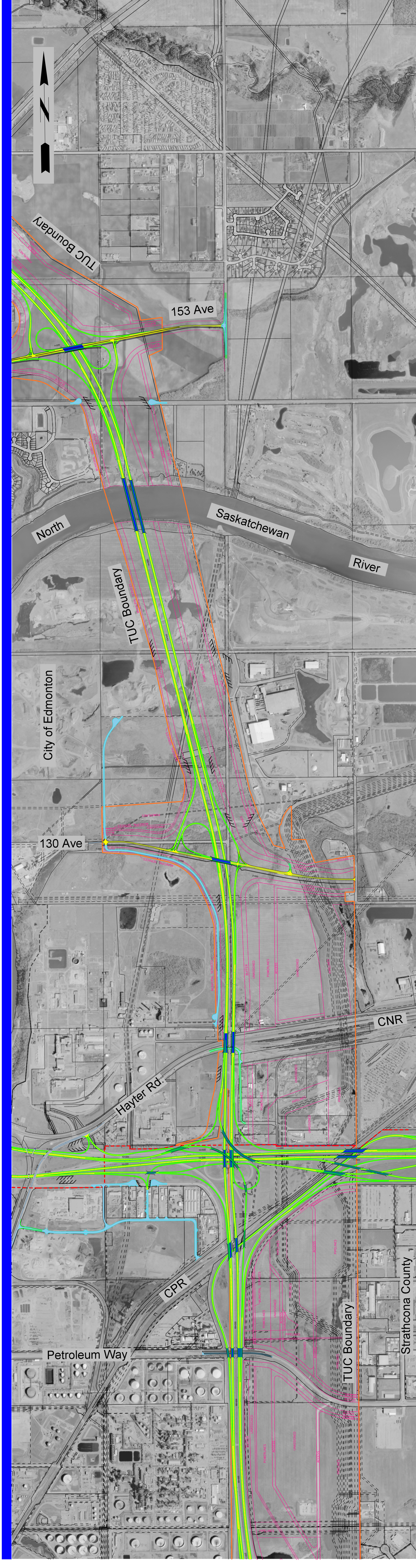


## Northeast Anthony Henday Drive 2041 - Stage 1 - Plan Profile (1.6 Million Regional Population)

**PRELIMINARY**  
SUBJECT TO REVISION  
DATE: February 2011

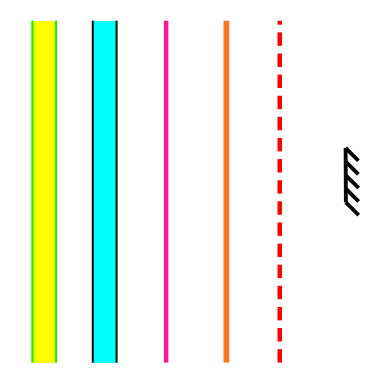


# NORTHEAST ANTHONY HENDAY DRIVE



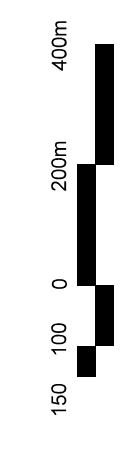
## Legend

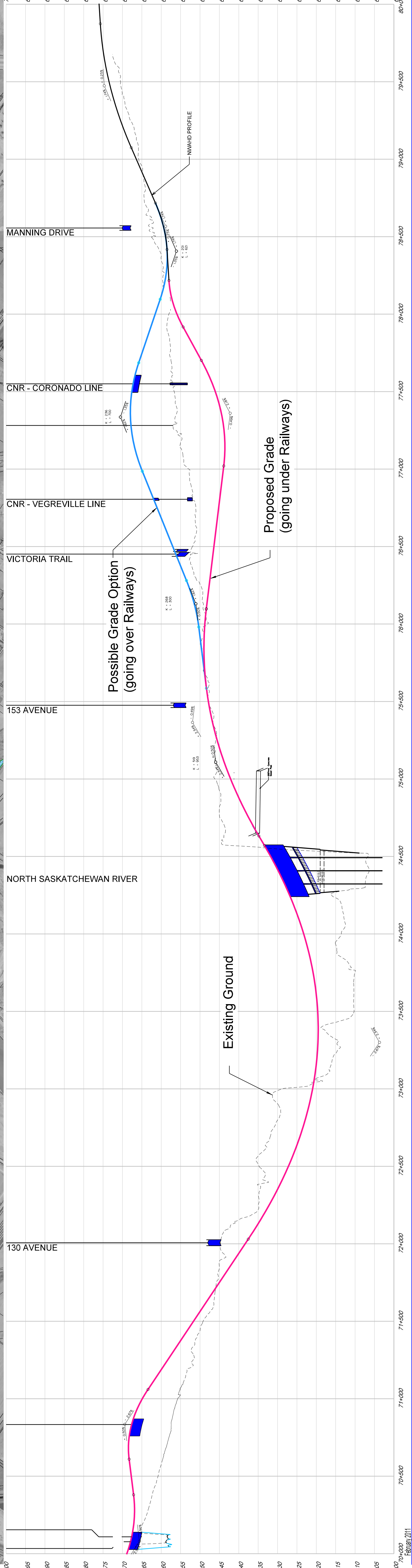
- PROPOSED ANTHONY HENDAY DRIVE
- PROPOSED SERVICE ROAD
- LAND USE AREAS
- TRANSPORTATION AND UTILITY CORRIDOR (TUC)
- - - CITY BOUNDARY
- ROAD CLOSED



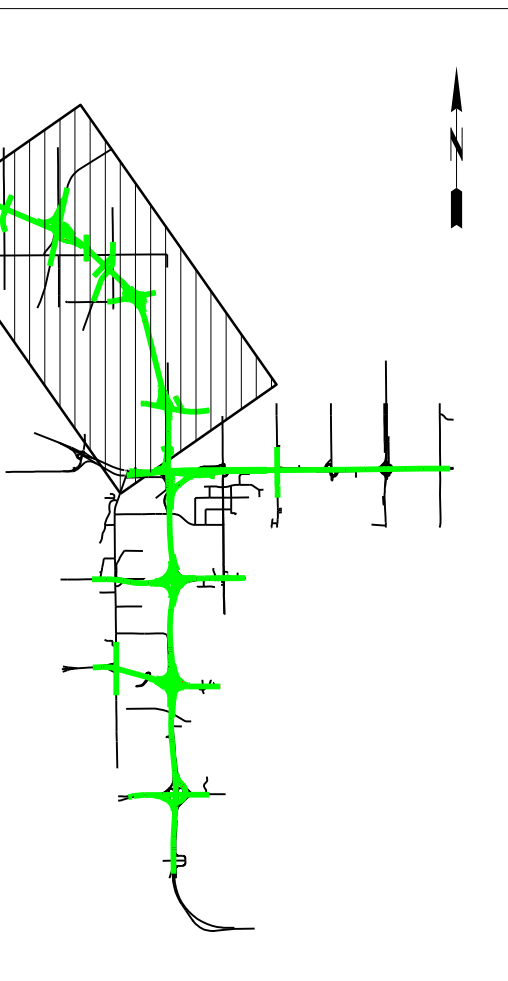
## Northeast Anthony Henday Drive 2041 - Stage 1 - Plan Profile (1.6 Million Regional Population)

PRELIMINARY  
FOR DISCUSSION ONLY  
DATE: March 2011  
SUBJECT TO REVISION





February 2011



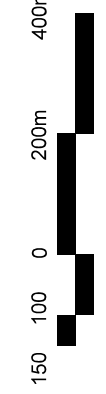
### Legend

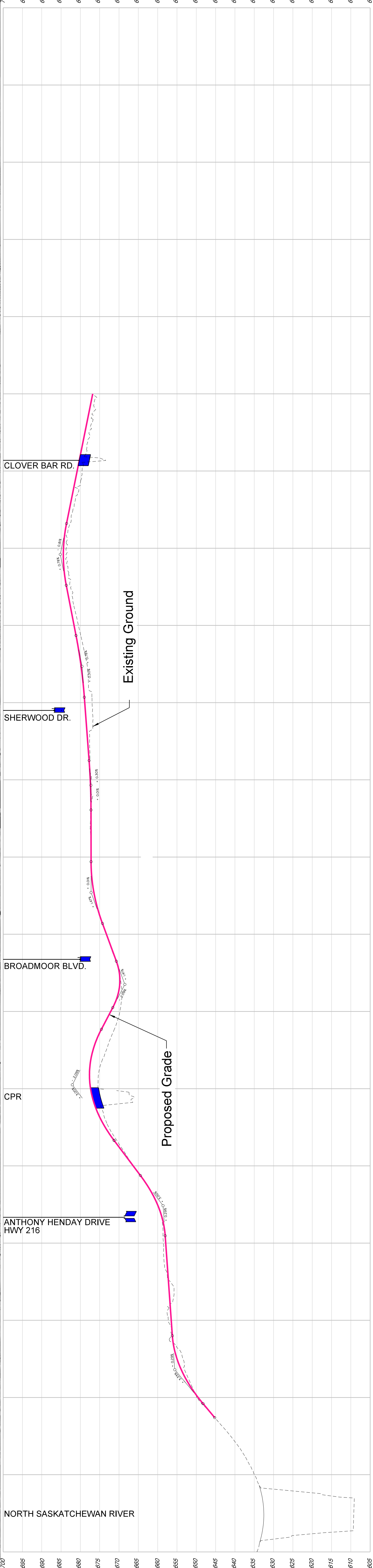
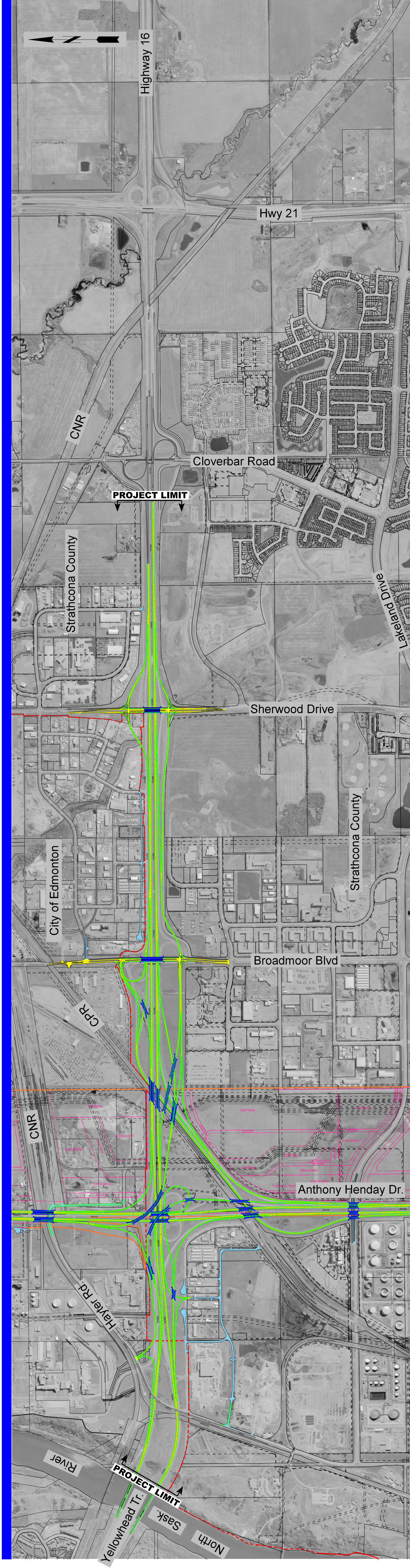
- PROPOSED ANTHONY HENDAY DRIVE
- PROPOSED SERVICE ROAD
- LAND USE AREAS
- TRANSPORTATION AND UTILITY CORRIDOR (TUC)
- CITY BOUNDARY
- ROAD CLOSED

- 
- 
- 
- 
- 
- 

## Northeast Anthony Henday Drive 2041 - Stage 1 - Plan Profile (1.6 Million Regional Population)

**PRELIMINARY**  
FOR DISCUSSION ONLY  
SUBJECT TO REVISION  
DATE: *March 2011*





February 2011

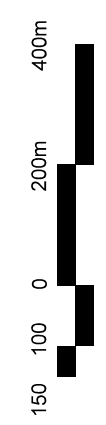


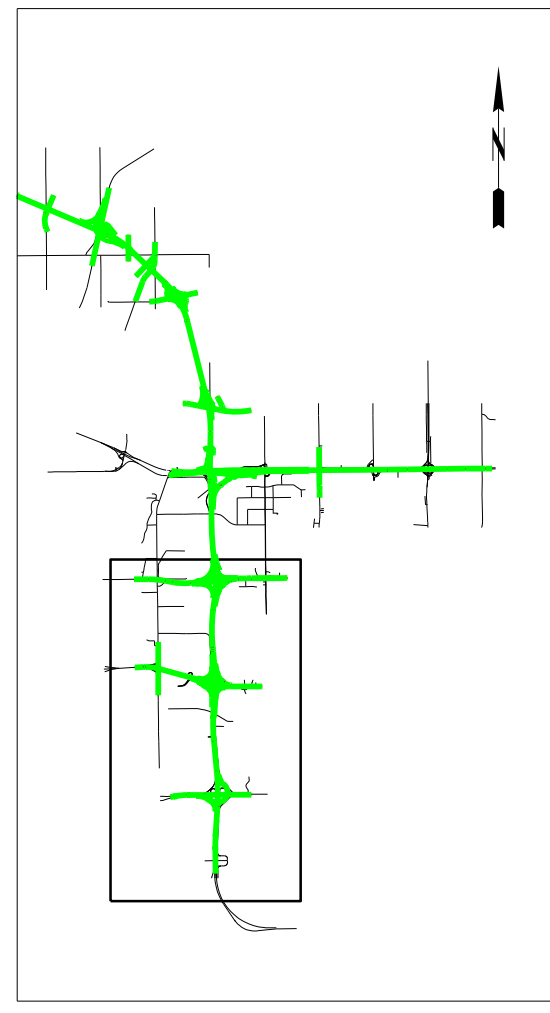
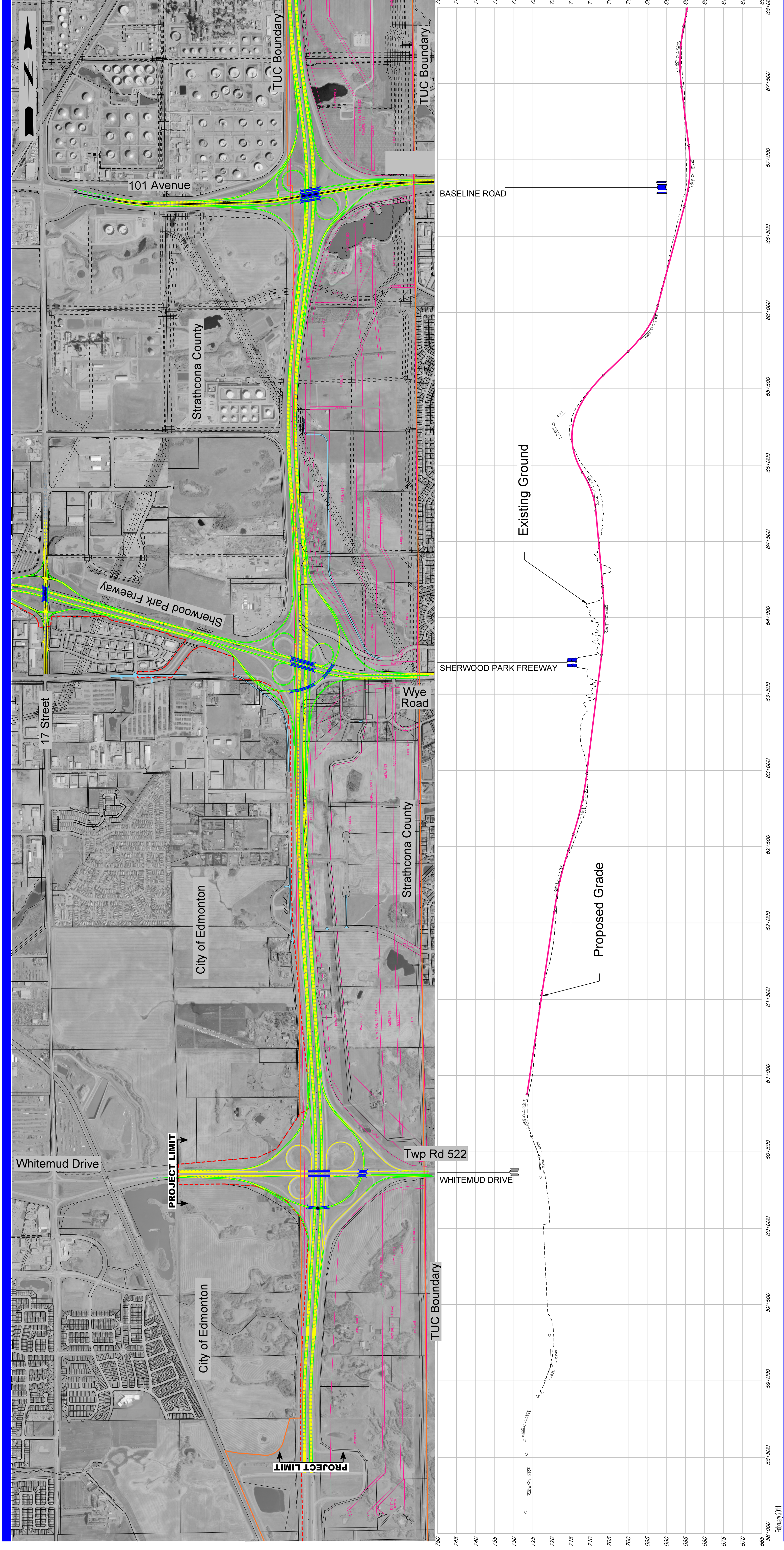
### Legend

- PROPOSED ANTHONY HENDAY DRIVE / YELLOWHEAD TRAIL
- PROPOSED SERVICE ROAD
- LAND USE AREAS
- TRANSPORTATION AND UTILITY CORRIDOR (TUC)
- CITY BOUNDARY
- ROAD CLOSED

PRELIMINARY  
FOR DISCUSSION ONLY  
DATE: February 2011  
SUBJECT TO REVISION

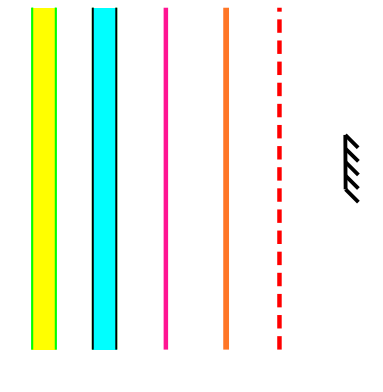
## Northeast Anthony Henday Drive 2041 - Stage 1 - Plan Profile (1.6 Million Regional Population)





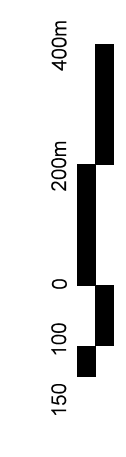
### Legend

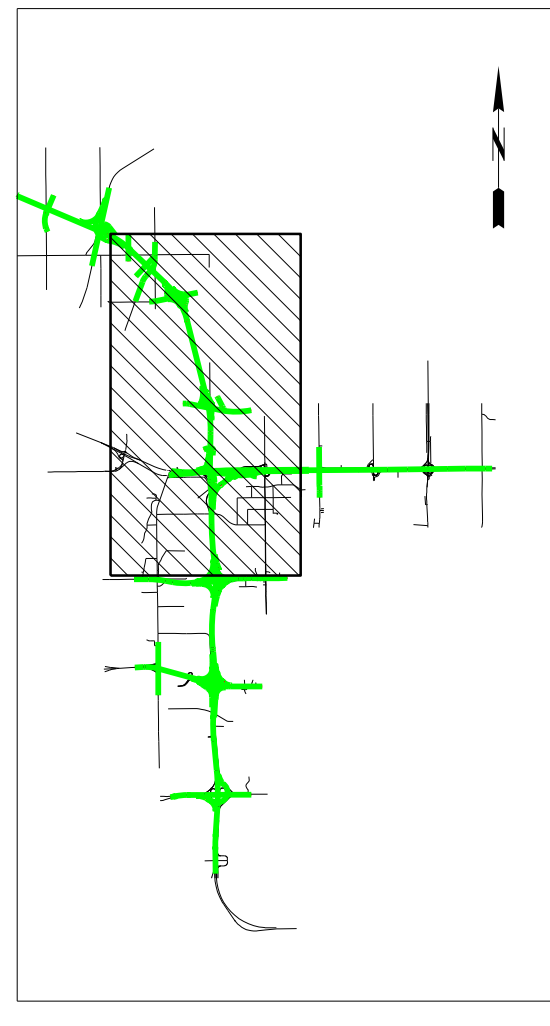
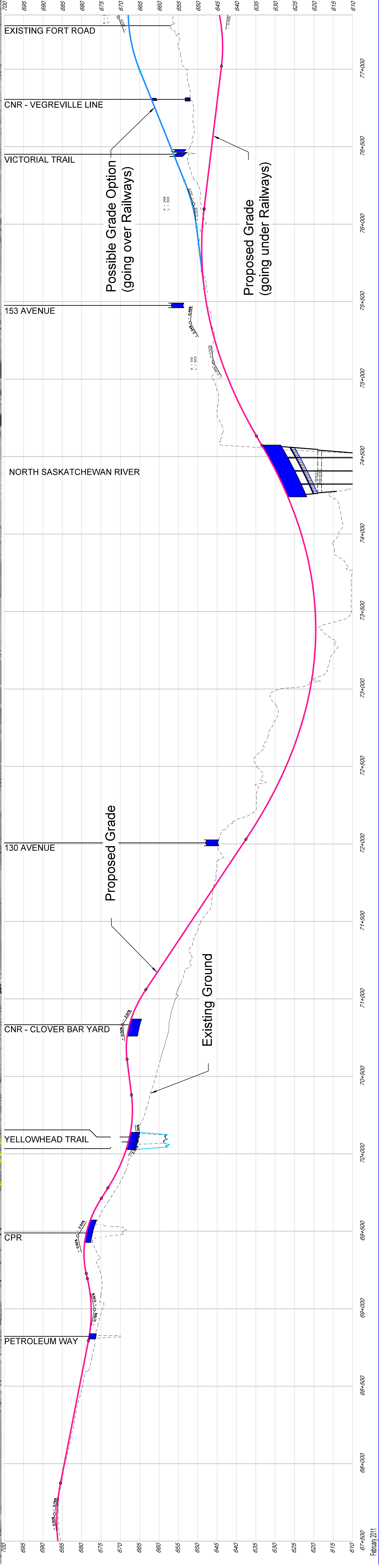
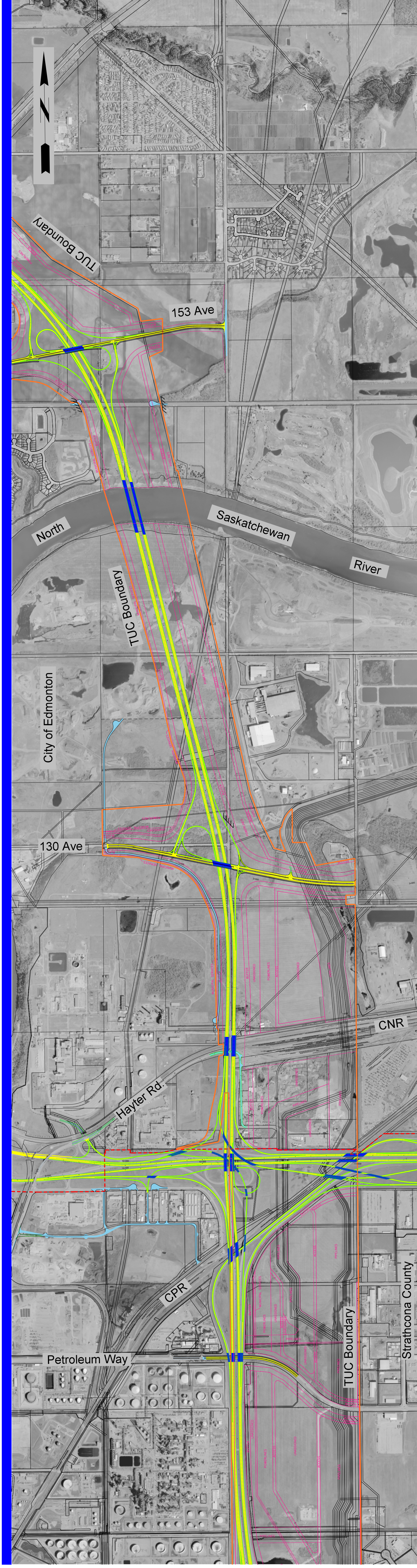
- PROPOSED ANTHONY HENDAY DRIVE
- PROPOSED SERVICE ROAD
- LAND USE AREAS
- TRANSPORTATION AND UTILITY CORRIDOR (TUC)
- CITY BOUNDARY
- ROAD CLOSED



## Northeast Anthony Henday Drive Ultimate Stage Plan Profile (2.5 Million Regional Population)

**PRELIMINARY**  
SUBJECT TO REVISION  
DATE: February 2011





### Legend

- PROPOSED ANTHONY HENDAY DRIVE
- PROPOSED SERVICE ROAD
- LAND USE AREAS
- TRANSPORTATION AND UTILITY CORRIDOR (TUC)
- - - CITY BOUNDARY
- - - ROAD CLOSED

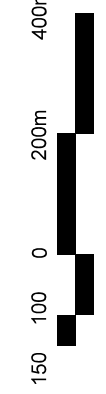
- 
- 
- 
- 
- - -
- - -

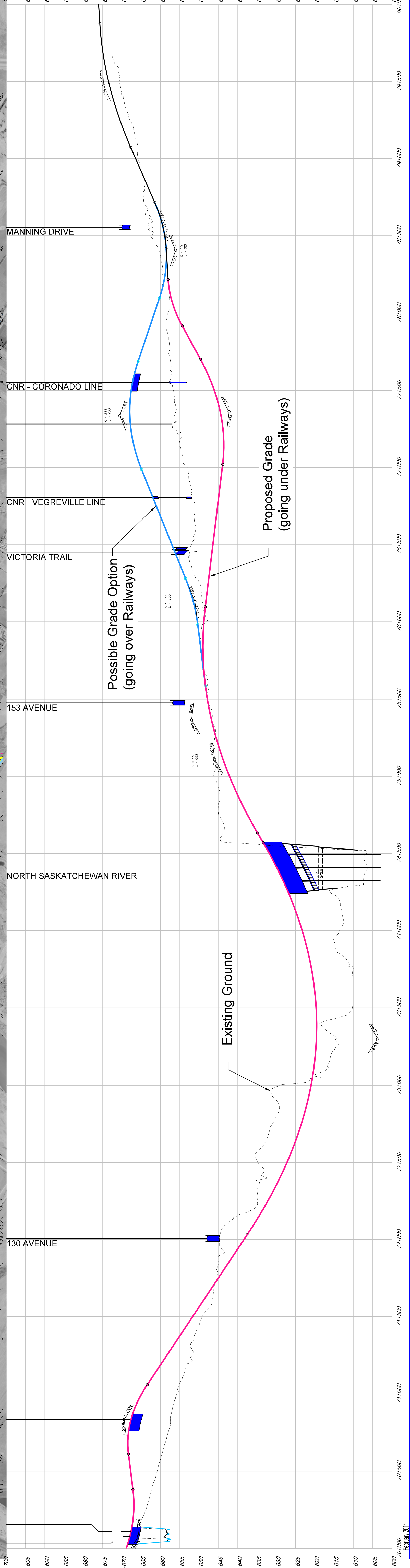
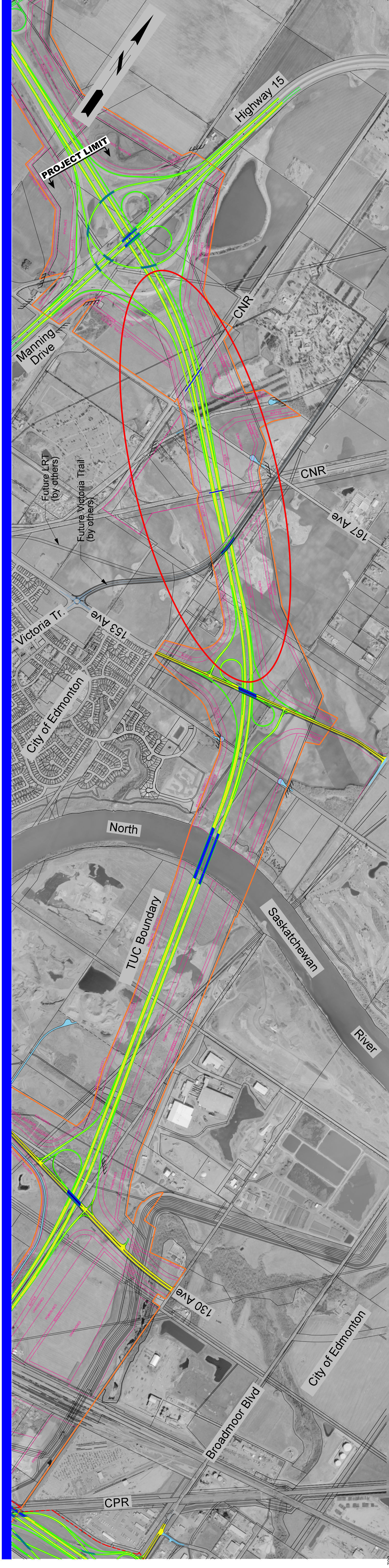
## Northeast Anthony Henday Drive

### Ultimate Stage Plan Profile

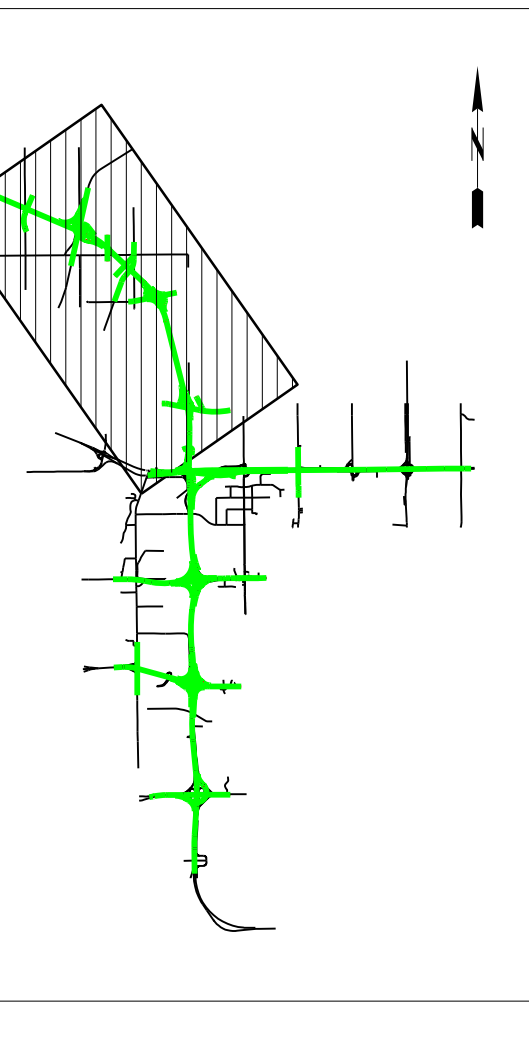
(2.5 Million Regional Population)

PRELIMINARY  
SUBJECT TO REVISION  
DATE: March 2011

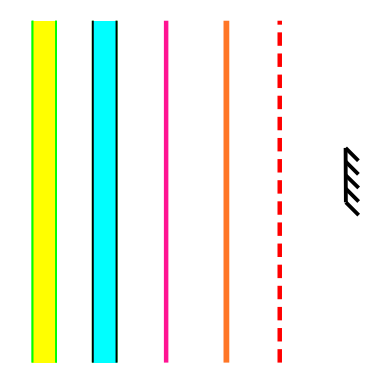




February 2011



- Legend**
- PROPOSED ANTHONY HENDAY DRIVE
  - PROPOSED SERVICE ROAD
  - LAND USE AREAS
  - TRANSPORTATION AND UTILITY CORRIDOR (TUC)
  - CITY BOUNDARY
  - ROAD CLOSED

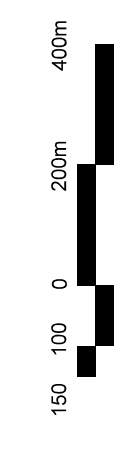


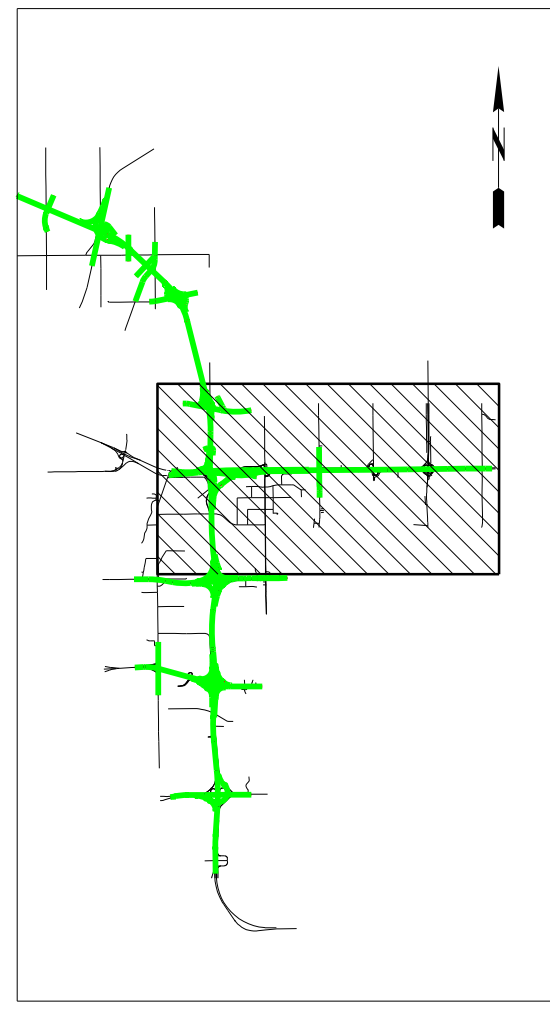
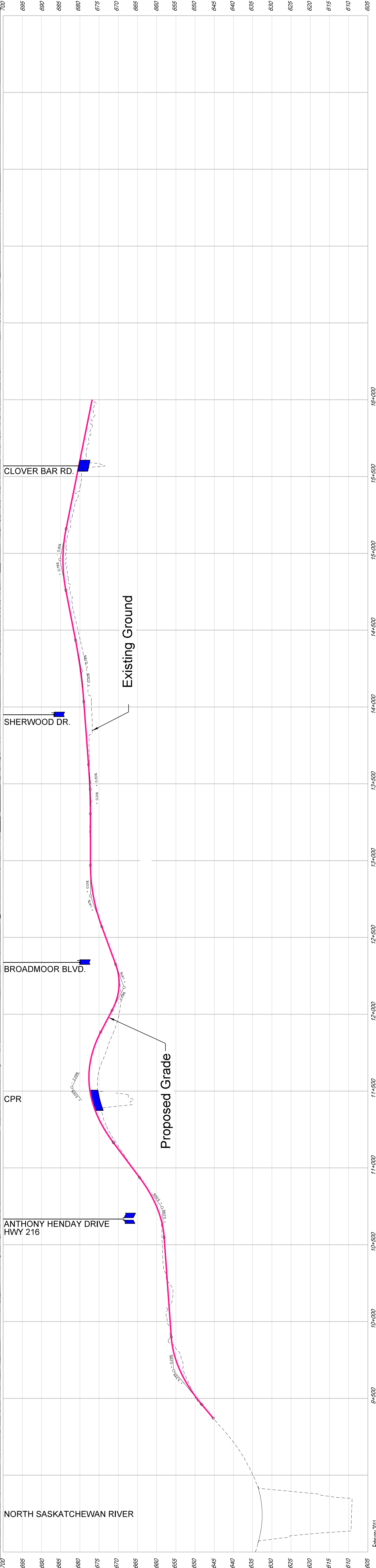
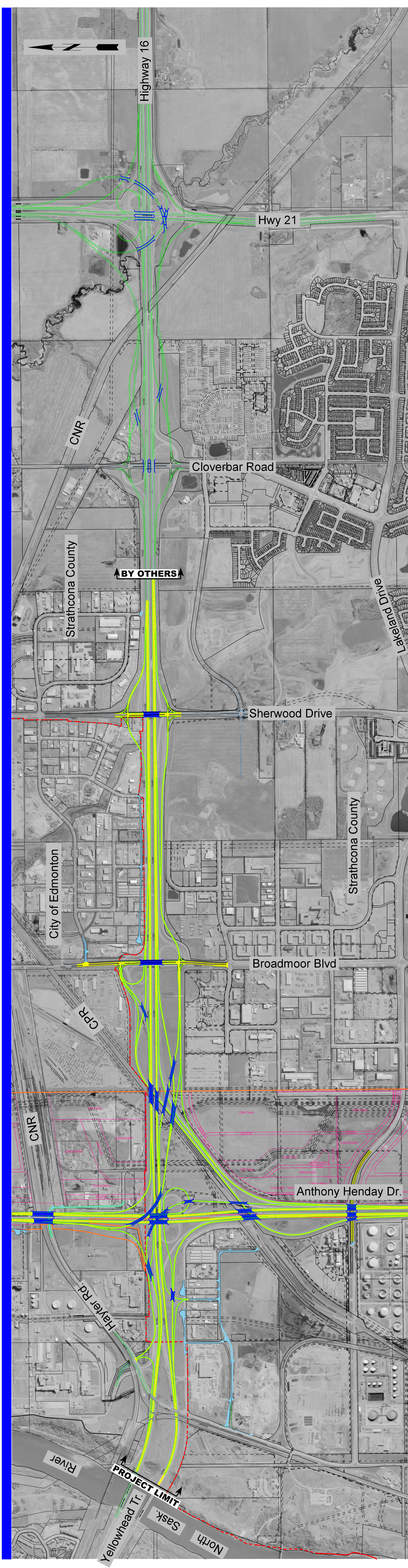
## Northeast Anthony Henday Drive

### Ultimate Stage Plan Profile

(2.5 Million Regional Population)

**PRELIMINARY**  
 SUBJECT TO REVISION  
 DATE: *March 2011*





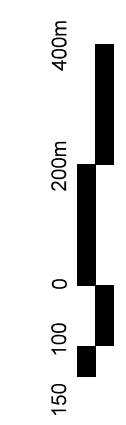
### Legend

- PROPOSED ANTHONY HENDAY DRIVE / YELLOWHEAD TRAIL
- PROPOSED SERVICE ROAD
- LAND USE AREAS
- TRANSPORTATION AND UTILITY CORRIDOR (TUC)
- CITY BOUNDARY
- ROAD CLOSED








PRELIMINARY  
 SUBJECT TO REVISION  
 DATE: **February 2011**

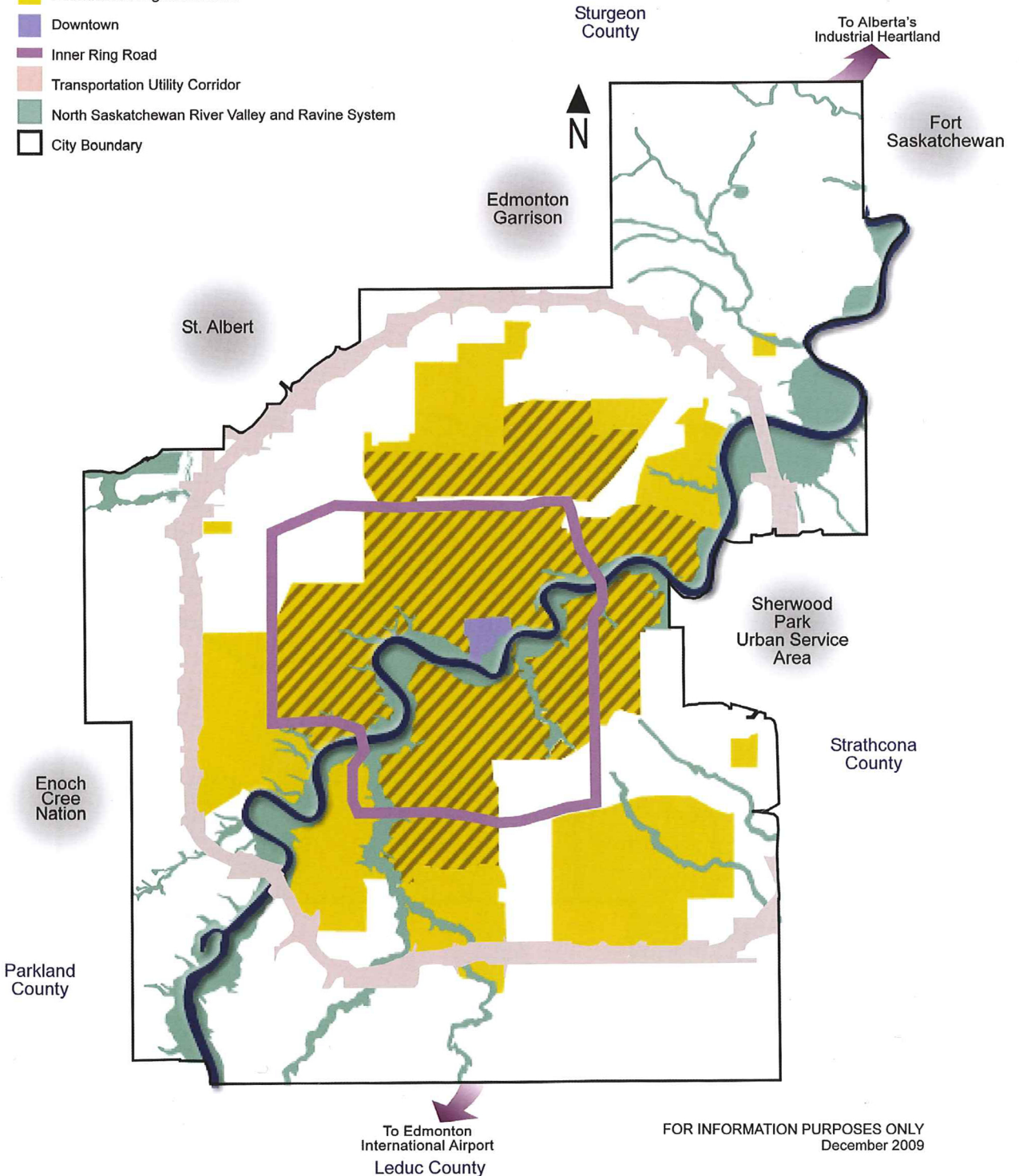
## Northeast Anthony Henday Drive

Ultimate Stage Plan Profile  
(2.5 Million Regional Population)



# Map 3: Established Neighbourhoods

-  Mature Neighbourhoods  
Mature Neighbourhood Overlay (Section 814, Edmonton Zoning Bylaw 12800)
-  Established Neighbourhoods
-  Downtown
-  Inner Ring Road
-  Transportation Utility Corridor
-  North Saskatchewan River Valley and Ravine System
-  City Boundary



# Map 4: Developing and Planned Neighbourhoods

- Developing Neighbourhoods (NSP approved)
- Planned Neighbourhoods (ASP or SCDB approved, No NSP & No Development)
- Plan Under Preparation (No ASP, SCDB or NASP)
- Main Arterial Roads
- Transportation Utility Corridor
- North Saskatchewan River Valley and Ravine System
- City Boundary

ASP = Area Structure Plan  
 SCDB = Servicing Concept Design Brief  
 NSP = Neighbourhood Structure Plan  
 NASP = Neighbourhood Area Structure Plan

