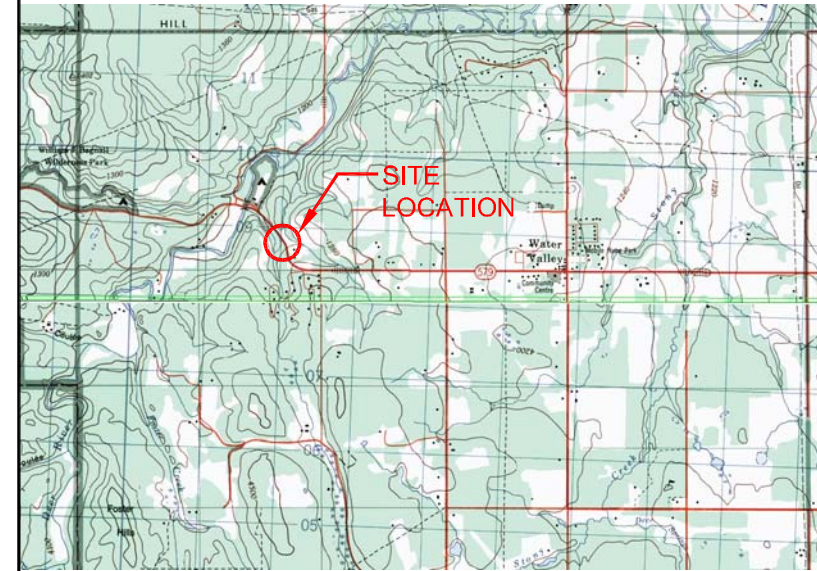
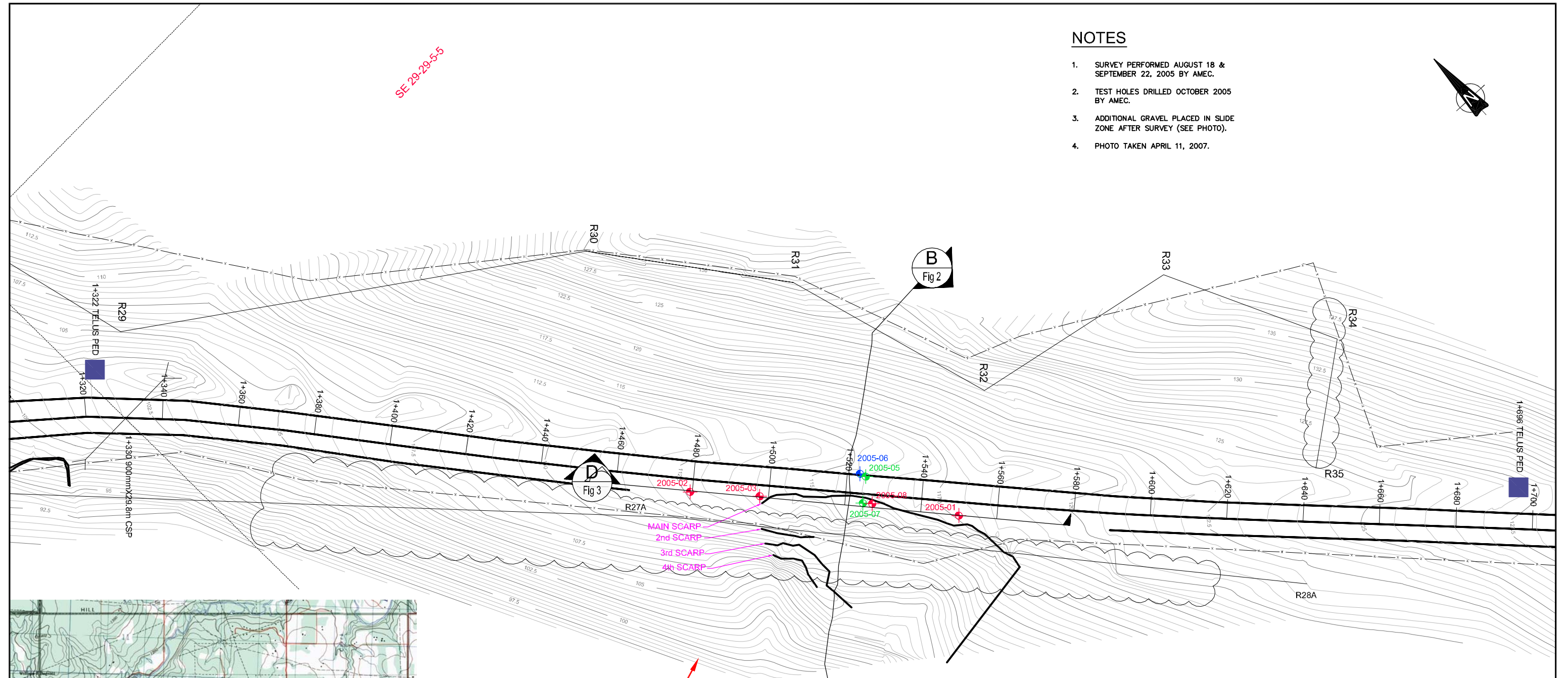


SE-29-29-5-5

NOTES

1. SURVEY PERFORMED AUGUST 18 & SEPTEMBER 22, 2005 BY AMEC.
2. TEST HOLES DRILLED OCTOBER 2005 BY AMEC.
3. ADDITIONAL GRAVEL PLACED IN SLIDE ZONE AFTER SURVEY (SEE PHOTO).
4. PHOTO TAKEN APRIL 11, 2007.



KEY PLAN

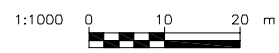


LEGEND:

- x— OVERHEAD POWERLINE
- 2005-05 BOREHOLE WITH SLOPE INCLINOMETER
- 2005-01 BOREHOLE WITH STANDPIPE PIEZOMETER
- 2005-06 BOREHOLE WITH PNEUMATIC PIEZOMETER
- LANDSLIDE SCARP - AUGUST 18/2005

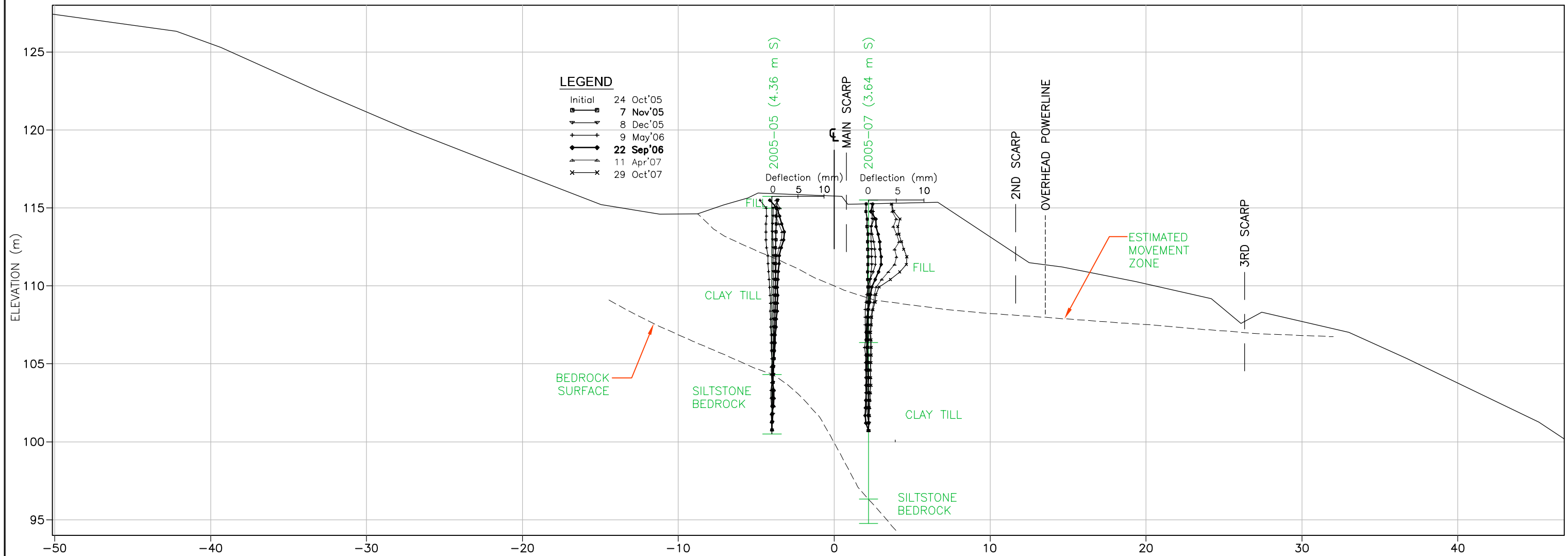
TO BE READ WITH KLOHN CRIPPEN BERGER REPORT DATED JUNE 2007

AS A MUTUAL PROTECTION TO OUR CLIENT, THE PUBLIC AND OURSELVES, ALL REPORTS AND DRAWINGS ARE SUBMITTED FOR THE CONFIDENTIAL INFORMATION OF OUR CLIENT FOR A SPECIFIC PROJECT AND AUTHORIZATION FOR USE AND/OR PUBLICATION OF DATA STATEMENTS, CONCLUSIONS OR ABSTRACTS FROM OR REGARDING OUR REPORTS AND DRAWINGS IS RESERVED PENDING OUR WRITTEN APPROVAL.		PROJECT CENTRAL REGION GEOHAZARD RISK ASSESSMENT
		TITLE SITE C42 H579 :02 SLIDE MAIN SLIDE AREA PLAN
PROJECT No. A03038A06		FIG. No. FIGURE 1



J:\Alberta\A03038A06 2007 AIT Geohazards\400 Design\C42 H579 Slide\A03038A04\Figure 1.dwg, 6/19/2007 11:58:46 AM, amehsin, Adobe PDF, pcc3

KCC-F444



B SECTION
Fig 1 SCALE 1:250

NOTES

1. INITIAL INCLINOMETER READING OCTOBER 24, 2005.
2. CURRENT INCLINOMETER READING OCTOBER 29, 2007.

SCALE 1:250 0 2.5 5.0 m

TO BE READ WITH KLOHN CRIPPEN BERGER REPORT DATED JUNE 2007	
AS A MUTUAL PROTECTION TO OUR CLIENT, THE PUBLIC AND OURSELVES, ALL REPORTS AND DRAWINGS ARE SUBMITTED FOR THE CONFIDENTIAL INFORMATION OF OUR CLIENT FOR A SPECIFIC PROJECT AND AUTHORIZATION FOR USE AND/OR PUBLICATION OF DATA STATEMENTS, CONCLUSIONS OR ABSTRACTS FROM OR REGARDING OUR REPORTS AND DRAWINGS IS RESERVED PENDING OUR WRITTEN APPROVAL.	CLIENT
	PROJECT CENTRAL REGION GEOHAZARD RISK ASSESSMENT
TITLE SITE C42 H579 :02 SLIDE CROSS SECTION B	
PROJECT No. A03038A06	FIG. No. FIGURE 2

KCB-484