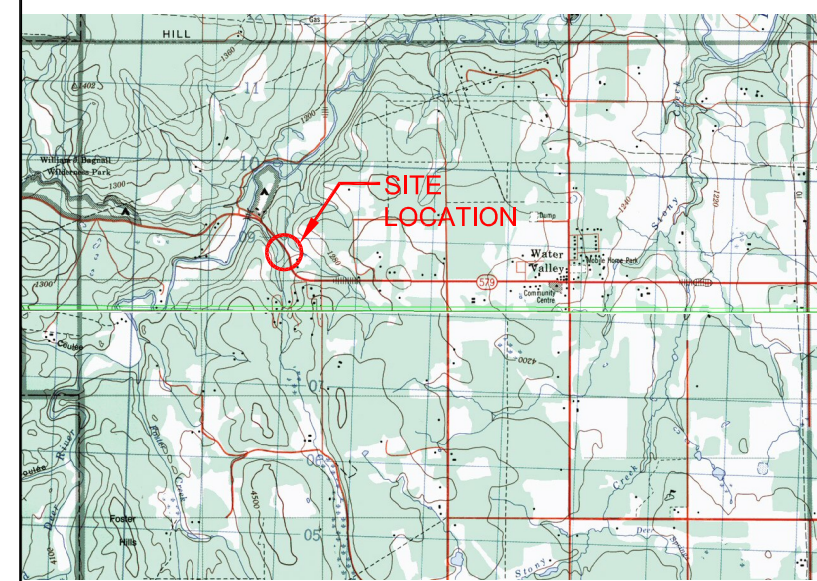
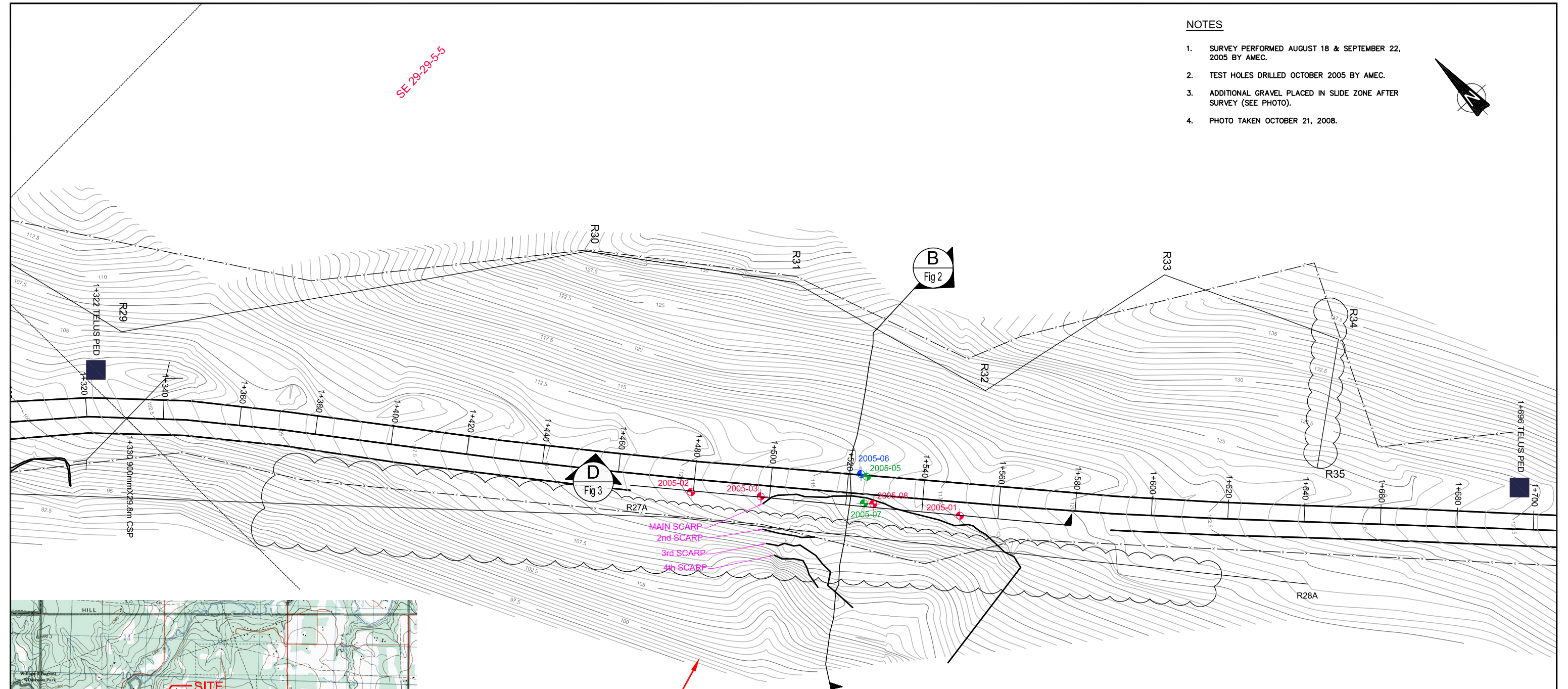


SE 29-29-5-5

NOTES

1. SURVEY PERFORMED AUGUST 18 & SEPTEMBER 22, 2005 BY AMEC.
2. TEST HOLES DRILLED OCTOBER 2005 BY AMEC.
3. ADDITIONAL GRAVEL PLACED IN SLIDE ZONE AFTER SURVEY (SEE PHOTO).
4. PHOTO TAKEN OCTOBER 21, 2008.



KEY PLAN

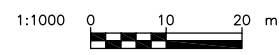


LEGEND:

- X — OVERHEAD POWERLINE
- 2005-05 BOREHOLE WITH SLOPE INCLINOMETER
- 2005-01 BOREHOLE WITH STANDPIPE PIEZOMETER
- 2005-06 BOREHOLE WITH PNEUMATIC PIEZOMETER
- LANDSLIDE SCARP - AUGUST 18/2005

TO BE READ WITH KLOHN CRIPPEN BERGER REPORT DATED OCTOBER 2008

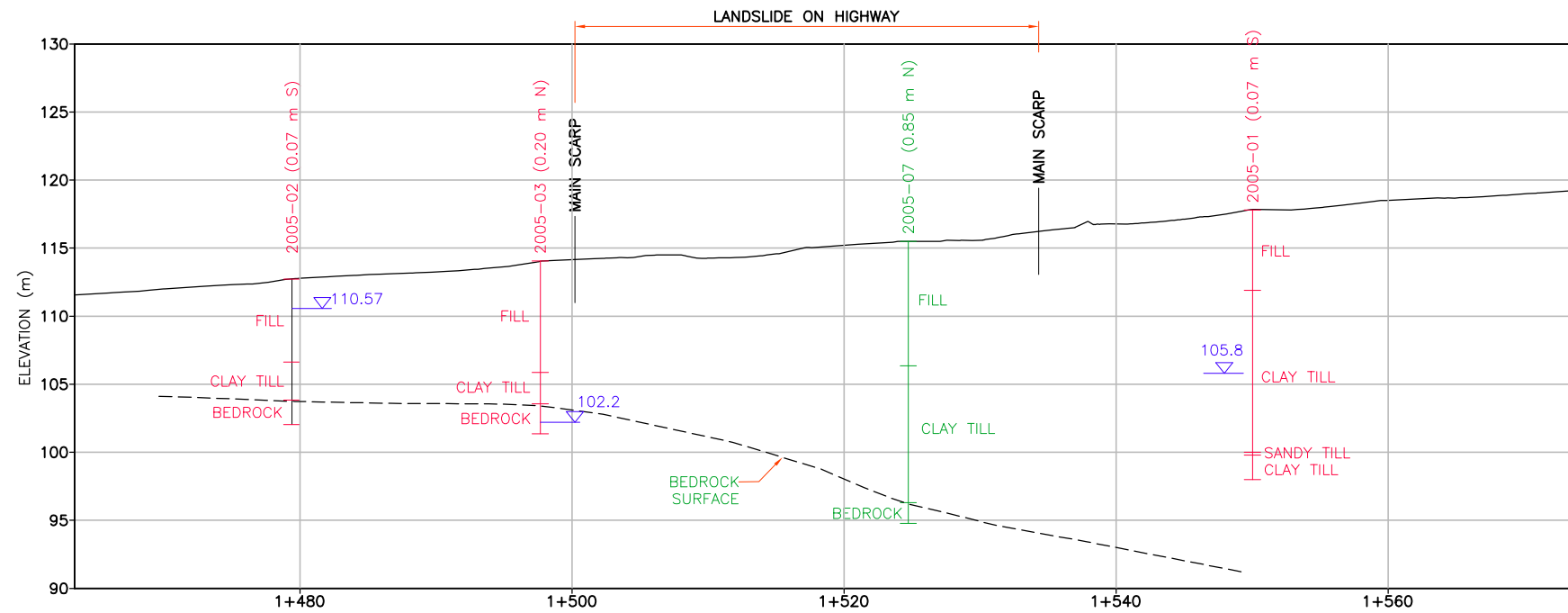
AS A MUTUAL PROTECTION TO OUR CLIENT, THE PUBLIC AND OURSELVES, ALL REPORTS AND DRAWINGS ARE SUBMITTED FOR THE CONFIDENTIAL INFORMATION OF OUR CLIENT FOR A SPECIFIC PROJECT AND AUTHORIZATION FOR USE AND/OR PUBLICATION OF DATA STATEMENTS, CONCLUSIONS OR ABSTRACTS FROM OR REGARDING OUR REPORTS AND DRAWINGS IS RESERVED PENDING OUR WRITTEN APPROVAL.		PROJECT CENTRAL REGION GEOHAZARD RISK ASSESSMENT	
		TITLE SITE C42 H579 :02 SLIDE MAIN SLIDE AREA PLAN	
PROJECT No. A03038A08		FIG. No. FIGURE 1	



KCCF-BM

NOTES

1. WATER LEVELS MEASURED OCTOBER 21, 2008.



D SECTION
Fig 1 SCALE 1:500

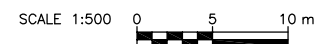
NOT FOR CONSTRUCTION

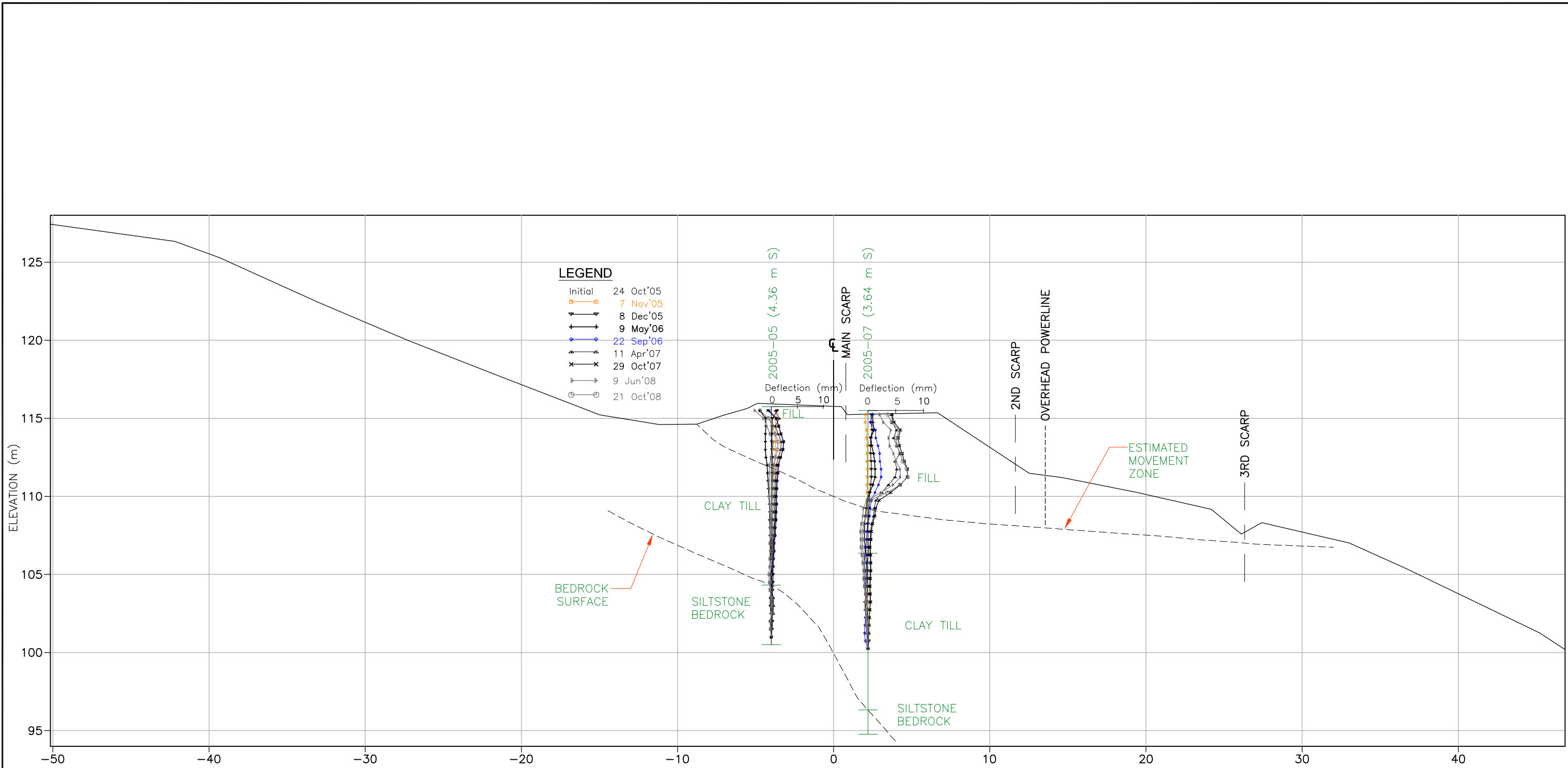
TO BE READ WITH KLOHN CRIPPEN BERGER REPORT DATED OCTOBER 2008

AS A MUTUAL PROTECTION TO OUR CLIENT, THE PUBLIC AND OURSELVES, ALL REPORTS AND DRAWINGS ARE SUBMITTED FOR THE CONFIDENTIAL INFORMATION OF OUR CLIENT FOR A SPECIFIC PROJECT AND AUTHORIZATION FOR USE AND/OR PUBLICATION OF DATA STATEMENTS, CONCLUSIONS OR ABSTRACTS FROM OR REGARDING OUR REPORTS AND DRAWINGS IS RESERVED PENDING OUR WRITTEN APPROVAL.

CLIENT

PROJECT	CENTRAL REGION GEOHAZARD RISK ASSESSMENT	
TITLE	SITE C42 H579 :02 SLIDE CROSS SECTION D	
PROJECT No.	A03038A08	FIG. No.
		FIGURE 3

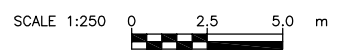




B SECTION
Fig 1 SCALE 1:250

NOTES

1. INITIAL INCLINOMETER READING OCTOBER 24, 2005.
2. CURRENT INCLINOMETER READING OCTOBER 21, 2008.



TO BE READ WITH KLOHN CRIPPEN BERGER REPORT DATED OCTOBER 2008	
AS A MUTUAL PROTECTION TO OUR CLIENT, THE PUBLIC AND OURSELVES, ALL REPORTS AND DRAWINGS ARE SUBMITTED FOR THE CONFIDENTIAL INFORMATION OF OUR CLIENT FOR A SPECIFIC PROJECT AND AUTHORIZATION FOR USE AND/OR PUBLICATION OF DATA STATEMENTS, CONCLUSIONS OR ABSTRACTS FROM OR REGARDING OUR REPORTS AND DRAWINGS IS RESERVED PENDING OUR WRITTEN APPROVAL.	Alberta Transportation
PROJECT CENTRAL REGION GEOHAZARD RISK ASSESSMENT	TITLE SITE C42 H579 :02 SLIDE CROSS SECTION B
PROJECT No. A03038A08	FIG. No. FIGURE 2

KCB-FRM