

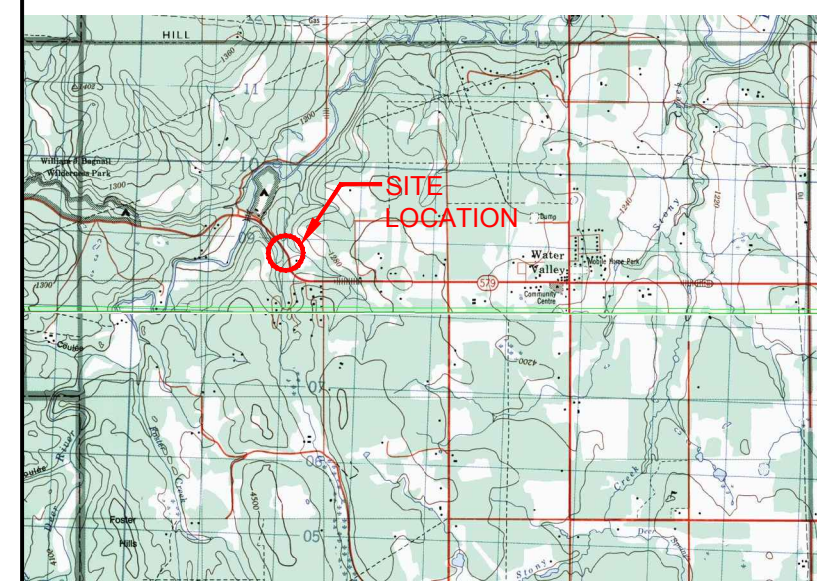
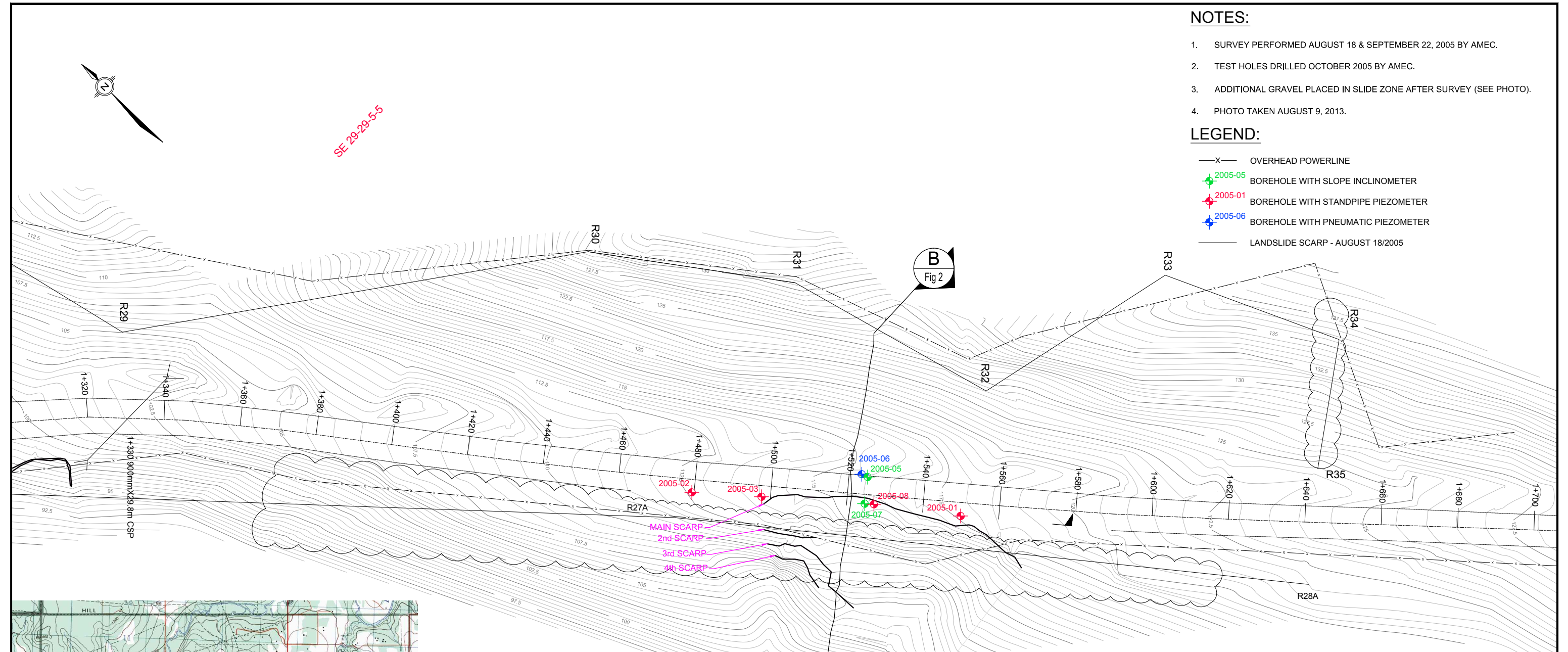
NOTES:

1. SURVEY PERFORMED AUGUST 18 & SEPTEMBER 22, 2005 BY AMEC.
2. TEST HOLES DRILLED OCTOBER 2005 BY AMEC.
3. ADDITIONAL GRAVEL PLACED IN SLIDE ZONE AFTER SURVEY (SEE PHOTO).
4. PHOTO TAKEN AUGUST 9, 2013.

LEGEND:

- X — OVERHEAD POWERLINE
- 2005-05 BOREHOLE WITH SLOPE INCLINOMETER
- 2005-01 BOREHOLE WITH STANDPIPE PIEZOMETER
- 2005-06 BOREHOLE WITH PNEUMATIC PIEZOMETER
- LANDSLIDE SCARP - AUGUST 18/2005

SE-29-29-5-5



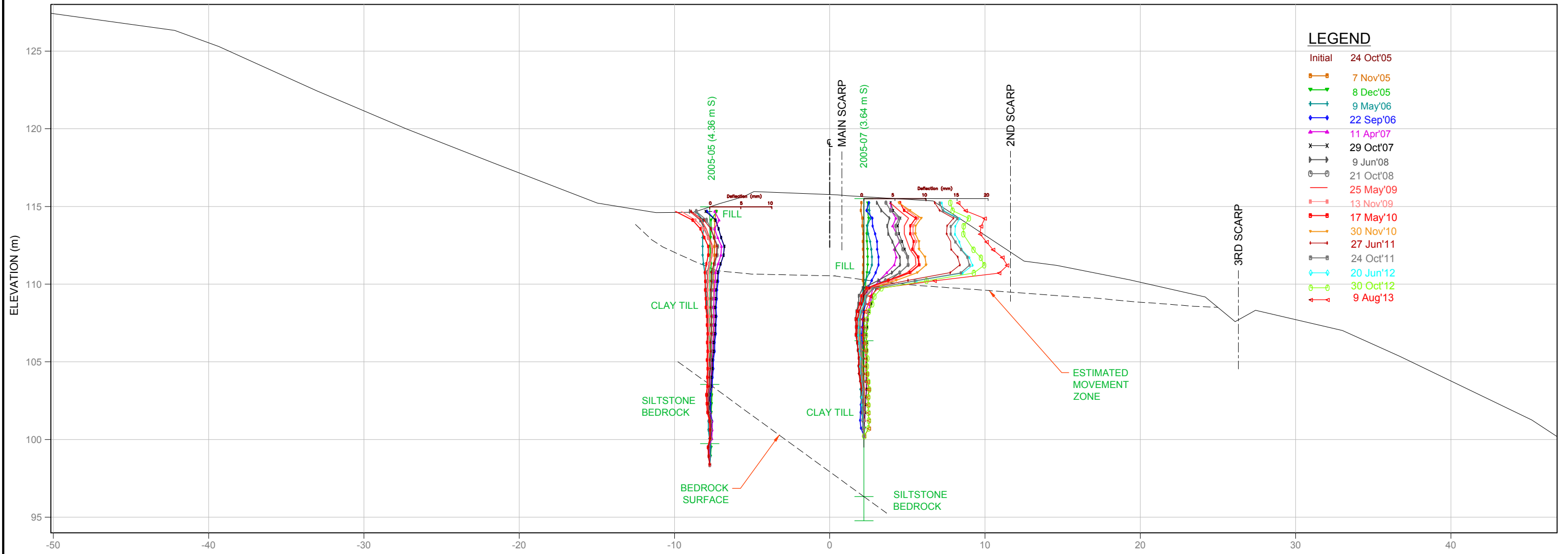
KEY PLAN



TO BE READ WITH KLOHN CRIPPEN BERGER REPORT DATED AUGUST 2013

AS A MUTUAL PROTECTION TO OUR CLIENT, THE PUBLIC AND OURSELVES, ALL REPORTS AND DRAWINGS ARE SUBMITTED FOR THE CONFIDENTIAL INFORMATION OF OUR CLIENT FOR A SPECIFIC PROJECT AND AUTHORIZATION FOR USE AND/OR PUBLICATION OF DATA STATEMENTS, CONCLUSIONS OR ABSTRACTS FROM OR REGARDING OUR REPORTS AND DRAWINGS IS RESERVED PENDING OUR WRITTEN APPROVAL.	CLIENT 	PROJECT CENTRAL REGION GEOHAZARD RISK ASSESSMENT	
			TITLE SITE C42 H579 :02 SLIDE MAIN SLIDE AREA PLAN
		PROJECT No. A03038A13	FIG. No. FIGURE 1

KCC-F-B.M



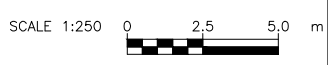
LEGEND

- Initial 24 Oct'05
- 7 Nov'05
- 8 Dec'05
- 9 May'06
- 22 Sep'06
- 11 Apr'07
- 29 Oct'07
- 9 Jun'08
- 21 Oct'08
- 25 May'09
- 13 Nov'09
- 17 May'10
- 30 Nov'10
- 27 Jun'11
- 24 Oct'11
- 20 Jun'12
- 30 Oct'12
- 9 Aug'13

B SECTION
Fig 1 SCALE 1:250

NOTES:

1. INITIAL INCLINOMETER READING OCTOBER 24, 2005.
2. CURRENT INCLINOMETER READING AUGUST 9, 2013.
3. INCLINOMETER 2005-5 NOT READ IN 2013.



TO BE READ WITH KLOHN CRIPPEN BERGER REPORT DATED AUGUST 2013

AS A MUTUAL PROTECTION TO OUR CLIENT, THE PUBLIC AND OURSELVES, ALL REPORTS AND DRAWINGS ARE SUBMITTED FOR THE CONFIDENTIAL INFORMATION OF OUR CLIENT FOR A SPECIFIC PROJECT AND AUTHORIZATION FOR USE AND/OR PUBLICATION OF DATA STATEMENTS, CONCLUSIONS OR ABSTRACTS FROM OR REGARDING OUR REPORTS AND DRAWINGS IS RESERVED PENDING OUR WRITTEN APPROVAL.		CENTRAL REGION GEOHAZARD RISK ASSESSMENT
		SITE C42 H579 :02 SLIDE CROSS SECTION B
PROJECT No.		A03038A13
FIG. No.		FIGURE 2