

G:\ACADEM\1515-16-192-2004-NORTH CENTRAL REGION\NC1\Whitecourt East Hill\NC1-1-B.dwg - NC1-1 - Oct. 26, 2004, 2:29pm

CROSS SECTION PROVIDED BY EXH ENGINEERING SERVICES LTD.

UPDATED JUNE 2004
THURBER PROJECT #15-16-192


ENGINEER	DJL
DRAWN	ZD
DATE	OCT., 2004
APPROVED	
SCALE	1:500

ALBERTA TRANSPORTATION

STRATIGRAPHIC CROSS SECTION A-A'
STATION 1+829.6

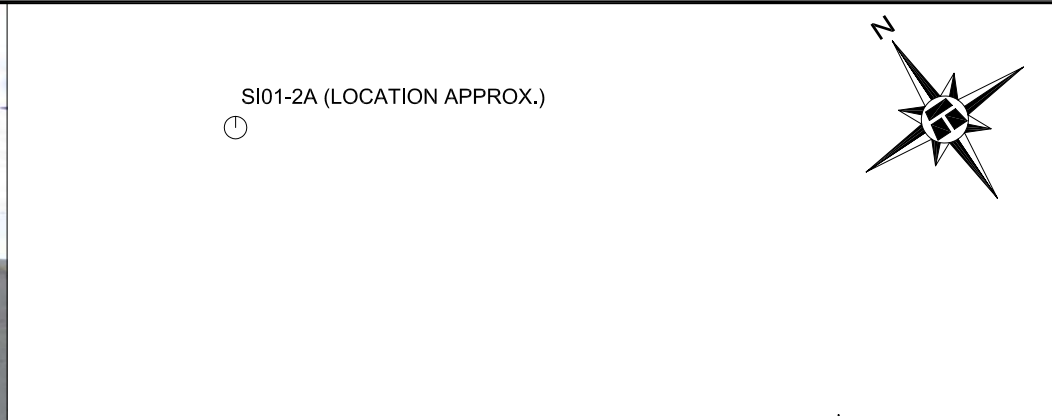
26-59-12-W5M
NC1 HWY 43:16 km 1.9

WHITECOURT EAST HILL, AB

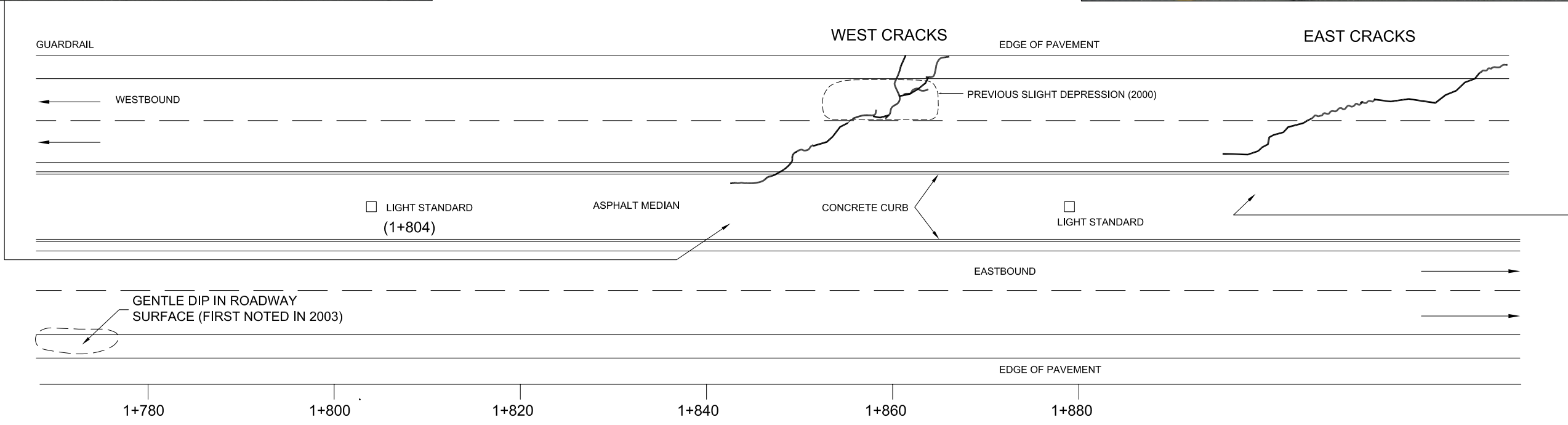


THURBER

DRAWING No.
FIGURE NC 1-1B



GRAVEL ACCESS ROAD

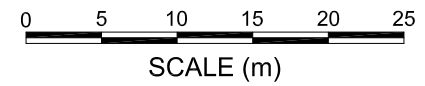


G:\ACAD\FILE\15-16-192-2004-NORTH CENTRAL REGION\NC1 Whitecourt East Hill\NC1-2.dwg - NC1-1B - Oct. 26, 2004 2:30pm

LEGEND

⊙ SLOPE INCLINOMETER

LOCATIONS OF FEATURES ARE APPROXIMATE
WIDTH OF ROADWAY EXAGGERATED
SCALE 1:500 ALONG ROADWAY ALIGNMENT



ENGINEER	DJL
DRAWN	ZD
DATE	AUGUST 2004
APPROVED	
SCALE	1:500

ALBERTA TRANSPORTATION

**CRACK PATTERN IN PAVEMENT
STATIONS 1+780 TO 1+880**

26-59-12-W5M
NC1 HWY 43:16

WHITECOURT EAST HILL, AB

UPDATED JUNE 2004
THURBER PROJECT #15-16-192

THURBER

DRAWING No.
FIGURE NC 1-2