



Photo 1 – Looking northeast at west crack, June 11, 2007.



Photo 2 – Looking northeast at east crack, June 11, 2007.



Photo 3 – Looking east along north guardrail, June 11, 2007.



Photo 4 – Looking east along north guardrail (west of Photo 3), June 11, 2007



Photo 5 – Gentle dip and pavement crack at Sta. 1+770, June 11, 2007.



Photo 6 – Looking east at erosion along eastbound lanes, June 11, 2007.



Photo 7 – Closer view of new crack to south of existing cracks, June 11, 2007.

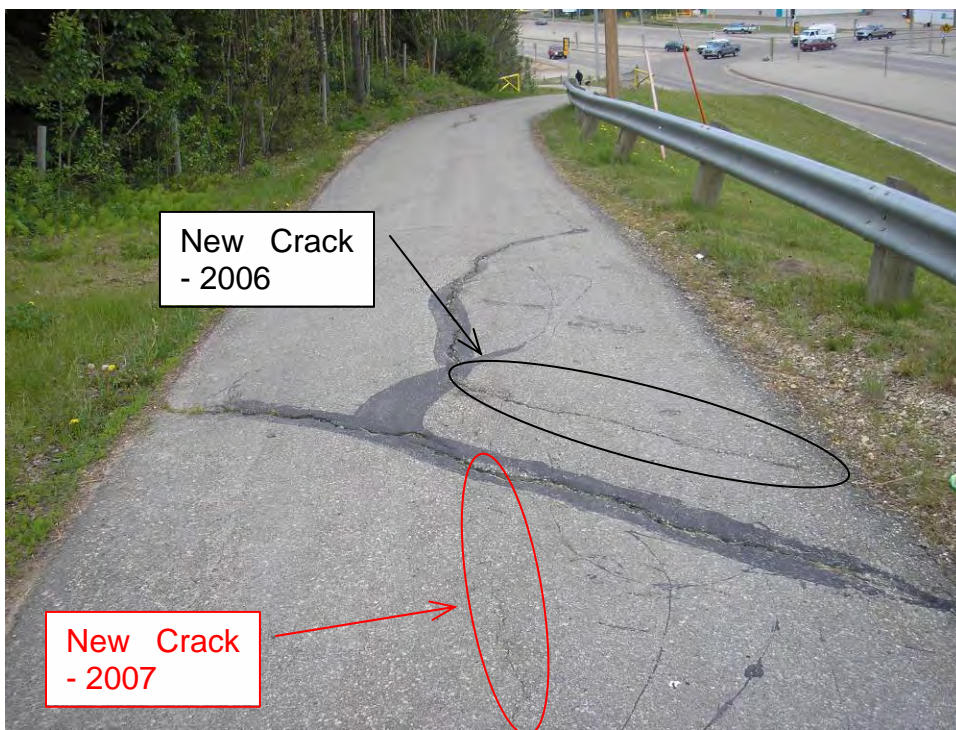


Photo 8 – Closer view of new crack to between existing cracks, June 11, 2007.



Photo 9 – Looking west at bin wall (Sta. 1+200), June 11, 2007.



Photo 10 – Looking east at bin wall (Sta. 1+200), June 11, 2007.