



Photo 1 – Looking northeast at west crack, June 11, 2008.



Photo 2 – Looking northeast at east crack, June 11, 2008.



Photo 3 – Looking east along north guardrail, June 11, 2008.



Photo 4 – Looking east at repaired shoulder and culvert dip (Station 1+770),
June 11, 2008.



Photo 5 – Gentle dip and pavement crack at Station 1+770, June 11, 2008.



Photo 6 – Looking west at cracks above bin wall, June 11, 2008.

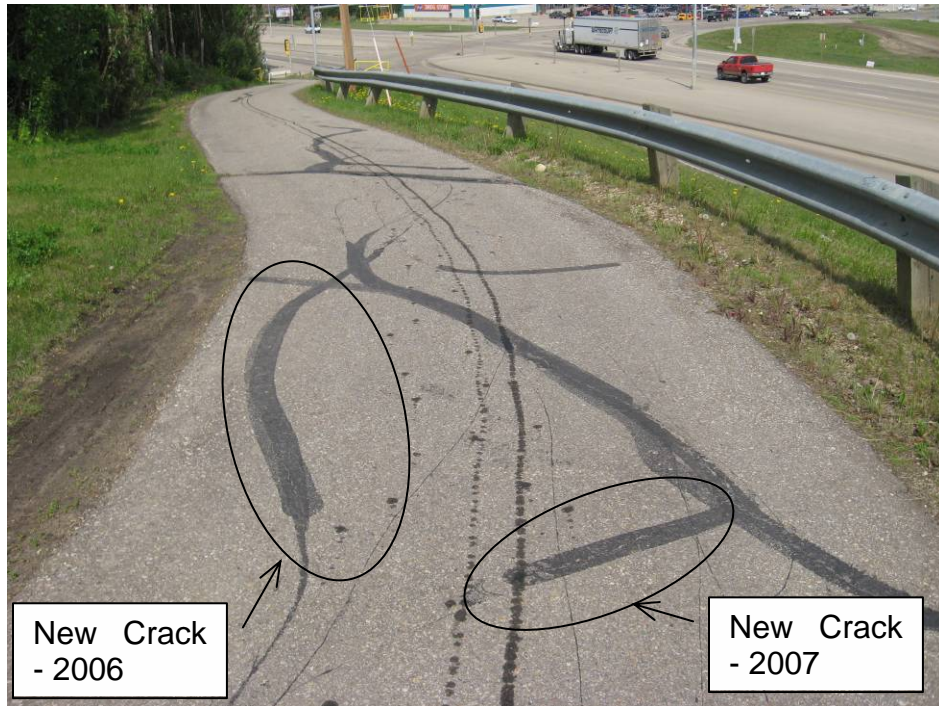


Photo 7 – Closer view of new crack to south of existing cracks, June 11, 2008.

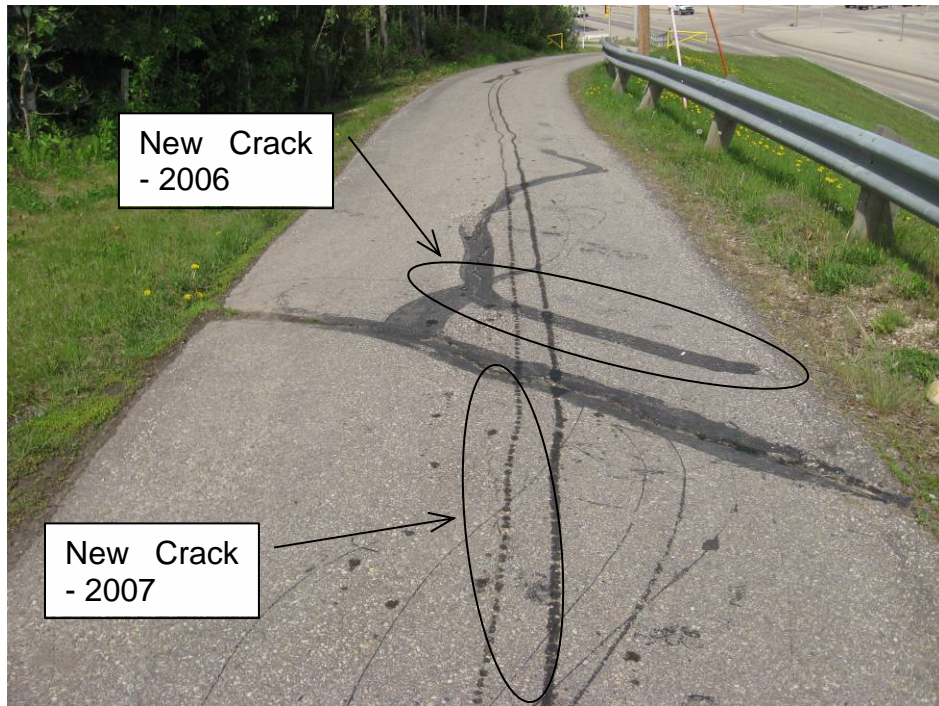


Photo 8 – Closer view of new crack to between existing cracks, June 11, 2008.



Photo 9 – Looking west at bin wall (Station 1+200), June 11, 2008.



Photo 10 – Looking east at bin wall (Station 1+200), June 11, 2008.