



Photo 1 – Looking northeast at catch basin cracks (June 15, 2010).



Photo 2 – Looking southwest at catch basin cracks (June 15, 2010).

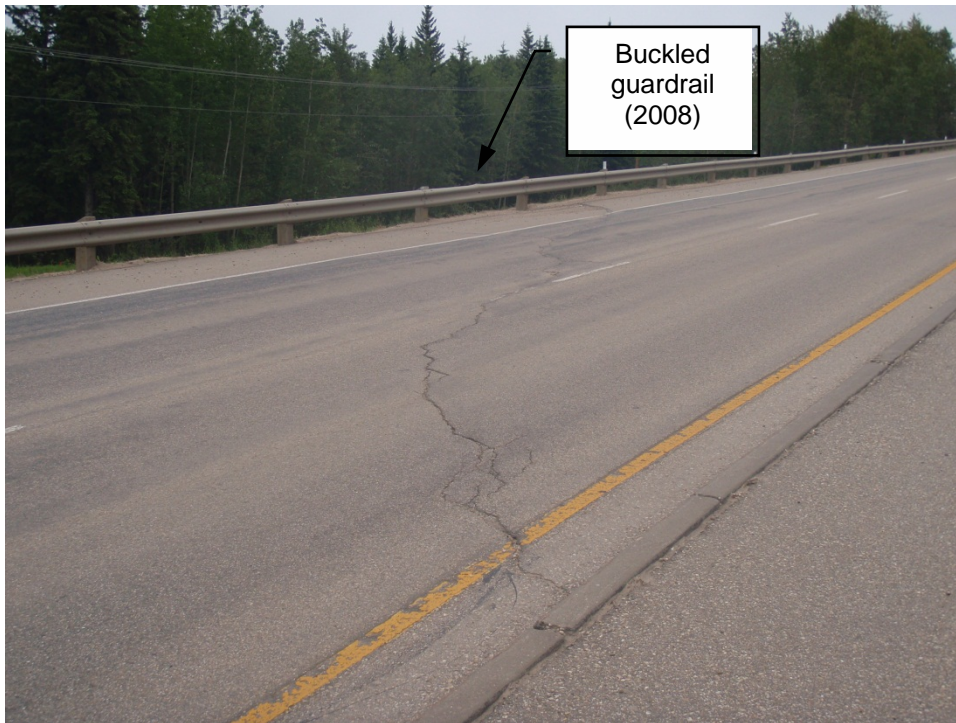


Photo 3 – Looking northeast at west crack (June 15, 2010).



Photo 4 – Looking northeast at east crack (June 15, 2010).



Photo 5 – Looking east along north guardrail (June 15, 2010).



Photo 6 – Looking northeast at culvert dip at Station 1+850 (June 15, 2010).



Photo 7 – Gentle dip and pavement crack at Station 1+850 (June 15, 2010).



Photo 8 – Looking west at cracks above bin wall. Note tilt of SI30 casing just beyond guardrail (June 15, 2010).

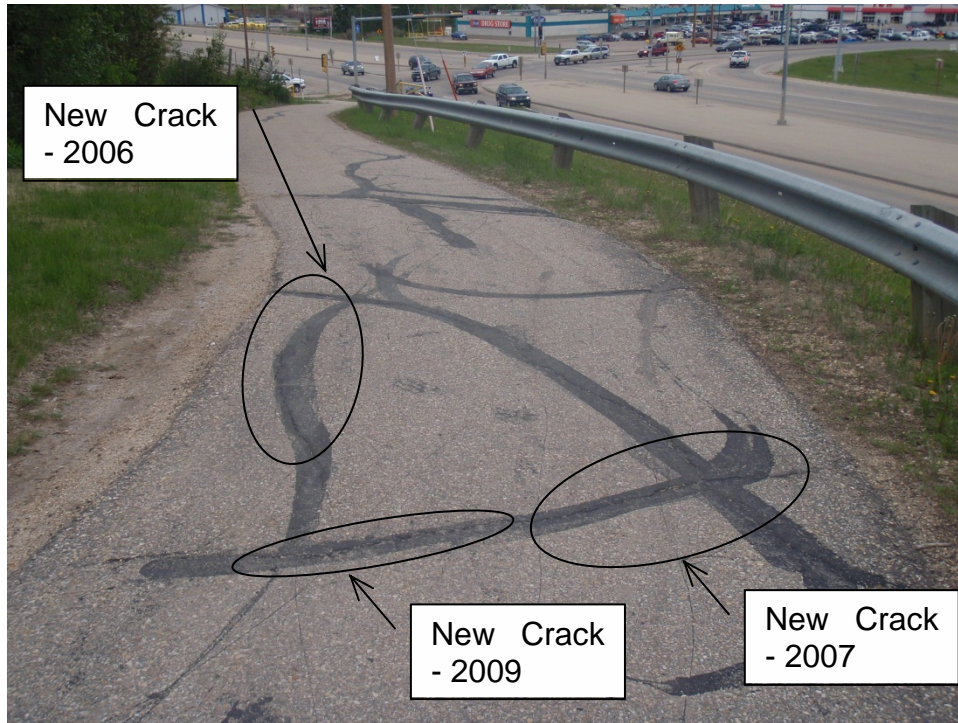


Photo 9 – Closer view of new crack to south of existing cracks (June 15, 2010).

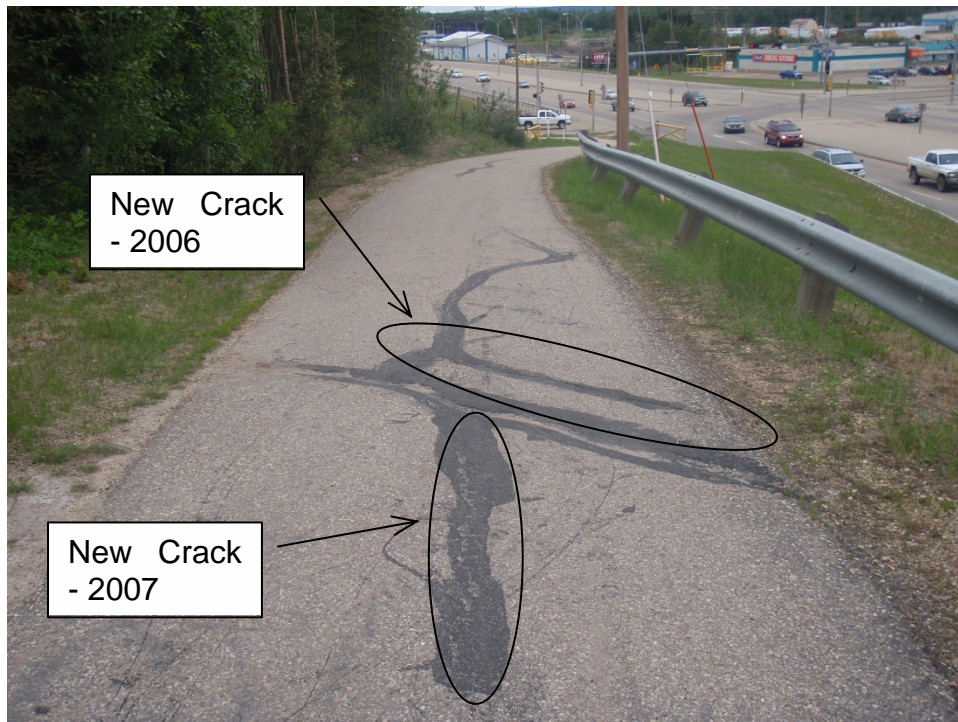


Photo 10 – Closer view of new crack to between existing cracks (June 15, 2010).



Photo 11 – Looking west at bin wall (Station 1+200) (June 15, 2010).



Photo 12 – Looking east at bin wall (Station 1+200) (June 15, 2010).