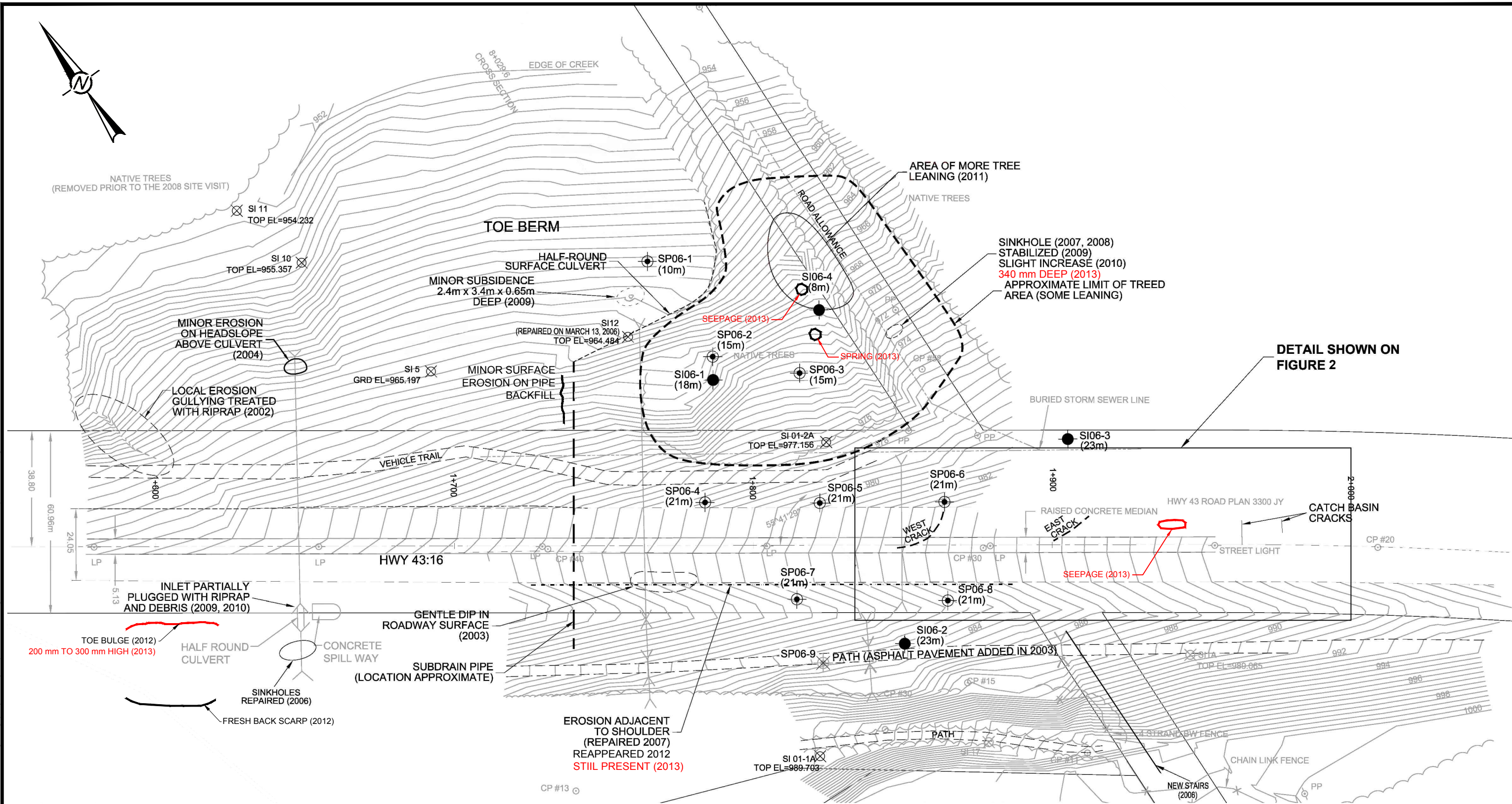


L:\2013\1376\13-1376-0027\2000\2100\1313760027\2000A001_NC1_Fig1.dwg | Layout: Layout | Modified: AMaghegan 08/21/2013 1:37 PM | Plotted: AMaghegan 08/21/2013



DETAIL SHOWN ON FIGURE 2

- LEGEND**
- ⊗ SI 01-2A ACTIVE SLOPE INCLINOMETERS
 - ⊗ SI 14 INOPERABLE INSTRUMENTS
 - ⊕ NEW STANDPIPE PIEZOMETER LOCATIONS
 - NEW SLOPE INCLINOMETER LOCATIONS
 - (15m) INSTALLATION DEPTH OF NEW INSTRUMENT

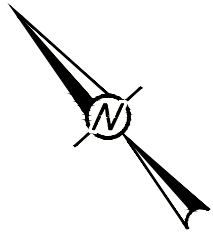
- NOTES**
1. FEATURE LOCATIONS ARE APPROXIMATE.
 2. PREVIOUS OBSERVATIONS SHOWN IN BLACK
 3. 2013 OBSERVATIONS SHOWN IN RED

REFERENCE
 PDF OF FIGURE NC1-1A OBTAINED FROM THURBER. PROJECT No.: 15-16-258
 DATE: AUGUST 2011 ORIGINAL SCALE: 1:1250

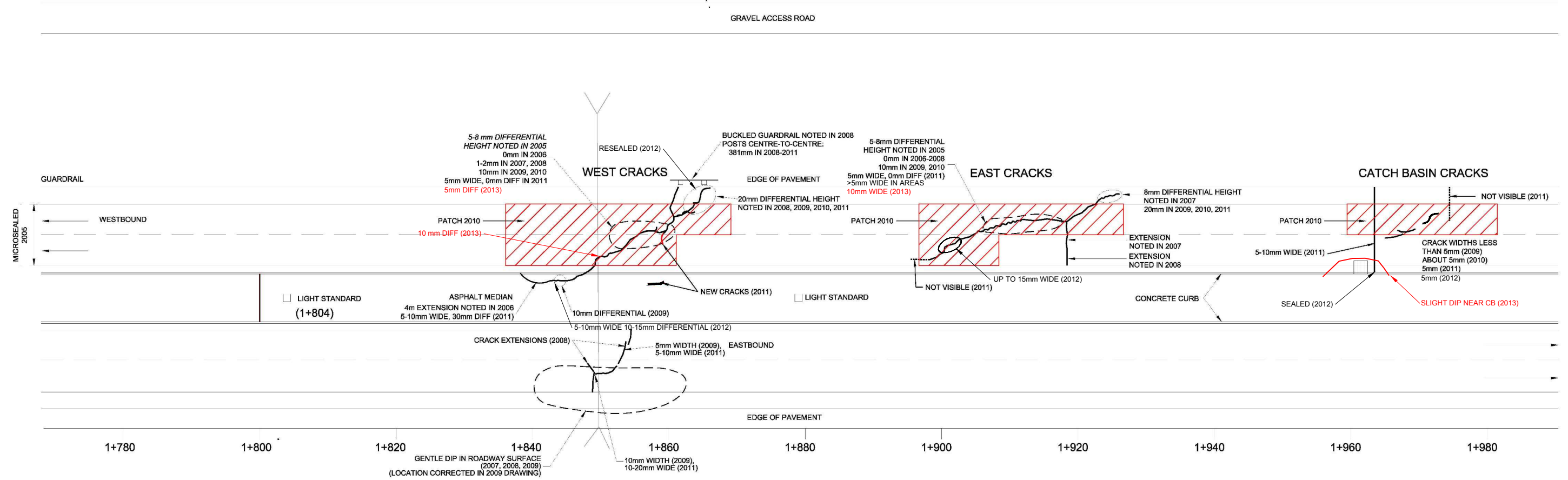
PROJECT			
ALBERTA TRANSPORTATION GEOHAZARD MONITORING PROGRAM			
TITLE			
NC1 WHITECOURT SITE PLAN			
PROJECT No. 13.1376.0027.2000		FILE No. 13137600272000A001	
DESIGN	EL	2013-07-31	SCALE AS SHOWN
CADD	SLC	2013-08-12	
CHECK	EL	2013-08-21	
REVIEW	IDD	2013-08-21	



FIGURE 1



SI01-2A (LOCATION APPROX.)



LEGEND

- SLOPE INCLINOMETER
- LOCATIONS OF FEATURES ARE APPROXIMATE
- WIDTH OF ROADWAY EXAGGERATED
- SCALE 1:600 ALONG ROADWAY ALIGNMENT

NOTES

1. FEATURE LOCATIONS ARE APPROXIMATE.
2. PREVIOUS OBSERVATIONS SHOWN IN BLACK
3. 2013 OBSERVATIONS SHOWN IN RED
4. PDF OBTAINED FROM CLIENT. PROJECT NUMBER: #15-16-258. DATE: AUGUST 2011

REFERENCE

PDF OF FIGURE NC1-2 OBTAINED FROM THURBER. PROJECT No.: 15-16-258
DATE: AUGUST 2011 ORIGINAL SCALE: 1:600



PROJECT				
ALBERTA TRANSPORTATION GEOHAZARD MONITORING PROGRAM				
TITLE				
NC1 WHITECOURT SITE PLAN				
PROJECT No.	13.1376.0027.2000	FILE No.	13137600272000A002	
DESIGN	EML	2013-07-31	SCALE	AS SHOWN
CADD	SLC	2013-08-08		
CHECK	EL	2013-08-21		
REVIEW	IDD	2013-08-21		



FIGURE 2

L:\2013\1376\13-1376-0027\2000\2100\13137600272000A002_NC1_Fig2.dwg | Layout: Layout | Modified: AMaghearan 08/21/2013 1:17 PM | Plotted: AMaghearan 08/21/2013