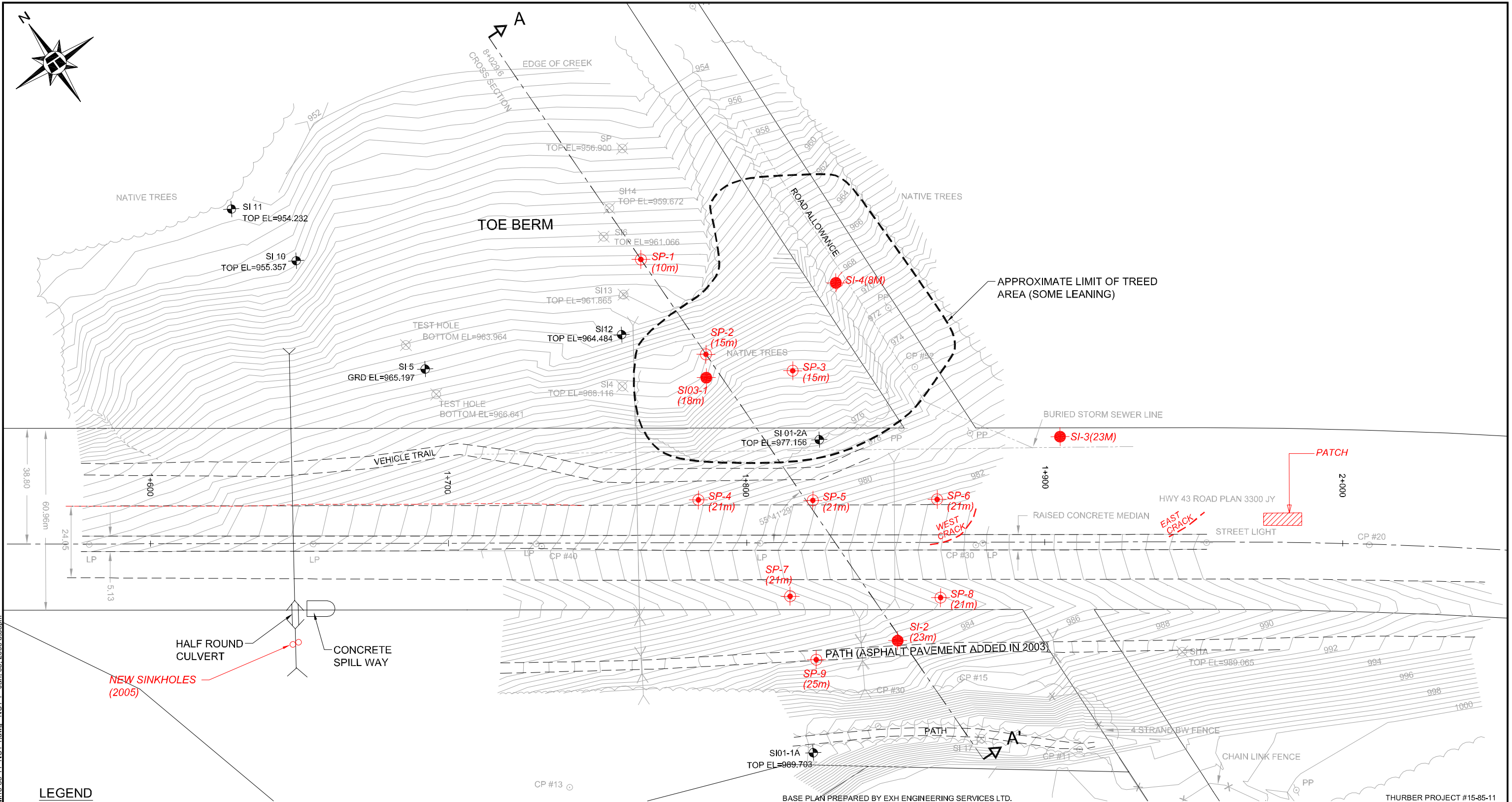


8+029.6  
CROSS SECTION  
A

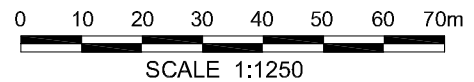


Z:\1515-95-11\NC\NC1.Whitecourt East Hill\15-95-11 NC1-1.dwg - NC1-1 - Jan. 05, 2006 3:35pm

**LEGEND**

- SI 01-2A ACTIVE SLOPE INCLINOMETERS
- ⊗ SI 14 INOPERABLE INSTRUMENTS
- 2003 PROPOSED STANDPIPE PIEZOMETER LOCATIONS (APPROX.)
- 2003 PROPOSED SLOPE INCLINOMETER LOCATIONS (APPROX.)
- (15m) 2003 PROPOSED INSTRUMENT INSTALLATION DEPTH

*NOTE: PROPOSED INSTRUMENTATION NOT INSTALLED AS OF 2005 SITE VISIT*



BASE PLAN PREPARED BY EXH ENGINEERING SERVICES LTD.

THURBER PROJECT #15-85-11

ALBERTA INFRASTRUCTURE & TRANSPORTATION

---

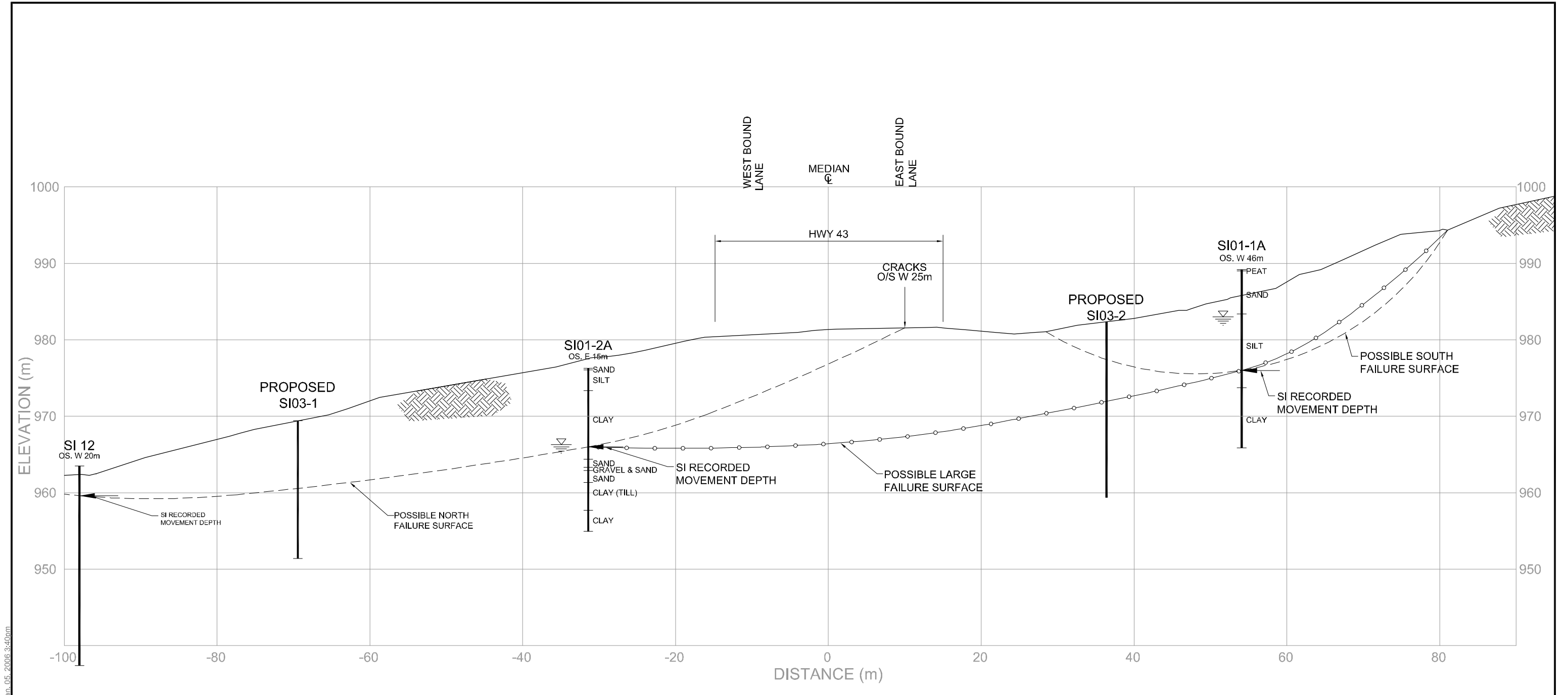
**WHITECOURT LANDSLIDE SITE PLAN**

NORTH CENTRAL 2005  
GEOHAZARDS ASSESSMENT

26-59-12-W5M  
HWY 43:16 km 1.9  
WHITECOURT EAST HILL, AB

**THURBER ENGINEERING LTD.**  
GEOTECHNICAL • ENVIRONMENTAL • MATERIALS

ENGINEER:	DRAWN:	APPROVED:
DJL	ZD	
DATE:	SCALE:	DRAWING No.
JULY, 2005	1:1250	FIGURE NC1-1A



Z:\1515-95-11\NC\NC1\Whitecourt East Hill\15-95-11\_NC1-1B.dwg - NC1-1 - Jan. 05, 2006 9:40am

**LEGEND**  
 PIEZOMETRIC LEVEL MAY 20, 2005

GROUND SURFACE PROFILE PREPARED BY EXH ENGINEERING SERVICES LTD.

THURBER PROJECT #15-85-11

ALBERTA INFRASTRUCTURE & TRANSPORTATION

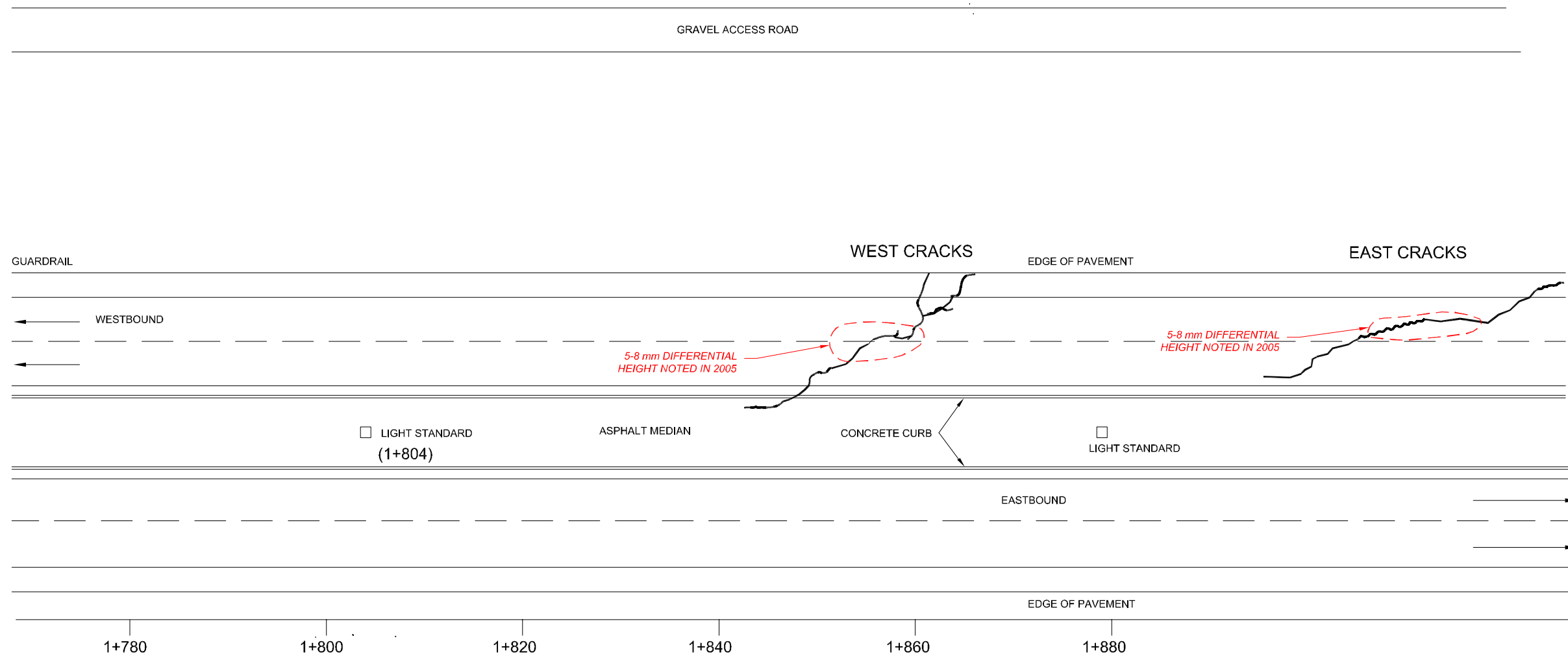
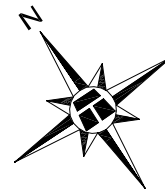
**STRATIGRAPHIC CROSS SECTION A-A'**  
 STATION 1+829.6

26-59-12-W5M  
 HWY 43:16 km 1.9  
 NORTH CENTRAL 2005 GEOHAZARDS ASSESSMENT WHITECOURT EAST HILL, AB

**THURBER ENGINEERING LTD.**  
 GEOTECHNICAL • ENVIRONMENTAL • MATERIALS

ENGINEER:	DJL	DRAWN:	ZD	APPROVED:
DATE:	JULY 2005	SCALE:	1:500	DRAWING No.
				FIGURE NC1-1B

SI01-2A (LOCATION APPROX.)



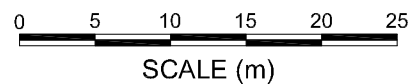
**LEGEND**

⊙ SLOPE INCLINOMETER

LOCATIONS OF FEATURES ARE APPROXIMATE  
WIDTH OF ROADWAY EXAGGERATED  
SCALE 1:500 ALONG ROADWAY ALIGNMENT

**NOTES :**

1. FEATURE LOCATIONS ARE APPROXIMATE.
2. PREVIOUS OBSERVATIONS SHOWN IN BLACK
3. *MAY 2005 OBSERVATIONS SHOWN IN RED*



THIS DRAWING WAS TAKEN FROM THURBER PROJECT #15-16-192

THURBER PROJECT #15-85-11

ALBERTA INFRASTRUCTURE & TRANSPORTATION

**CRACK PATTERN IN PAVEMENT  
STATIONS 1+800 TO 1+900**

NORTH CENTRAL 2005  
GEOHAZARDS ASSESSMENT

26-59-12-W5M  
HWY 43:16  
WHITECOURT EAST HILL, AB



**THURBER ENGINEERING LTD.**  
GEOTECHNICAL • ENVIRONMENTAL • MATERIALS

ENGINEER:	DJL	DRAWN:	ZD	APPROVED:	
DATE:	JULY 2005	SCALE:	1:500	DRAWING No.	FIGURE NC1-2

Z:\1515-85-11\NC\NC1\Whitecourt East Hill\15-85-11\_NC1-2-1.dwg - Jan. 05, 2006 3:42pm