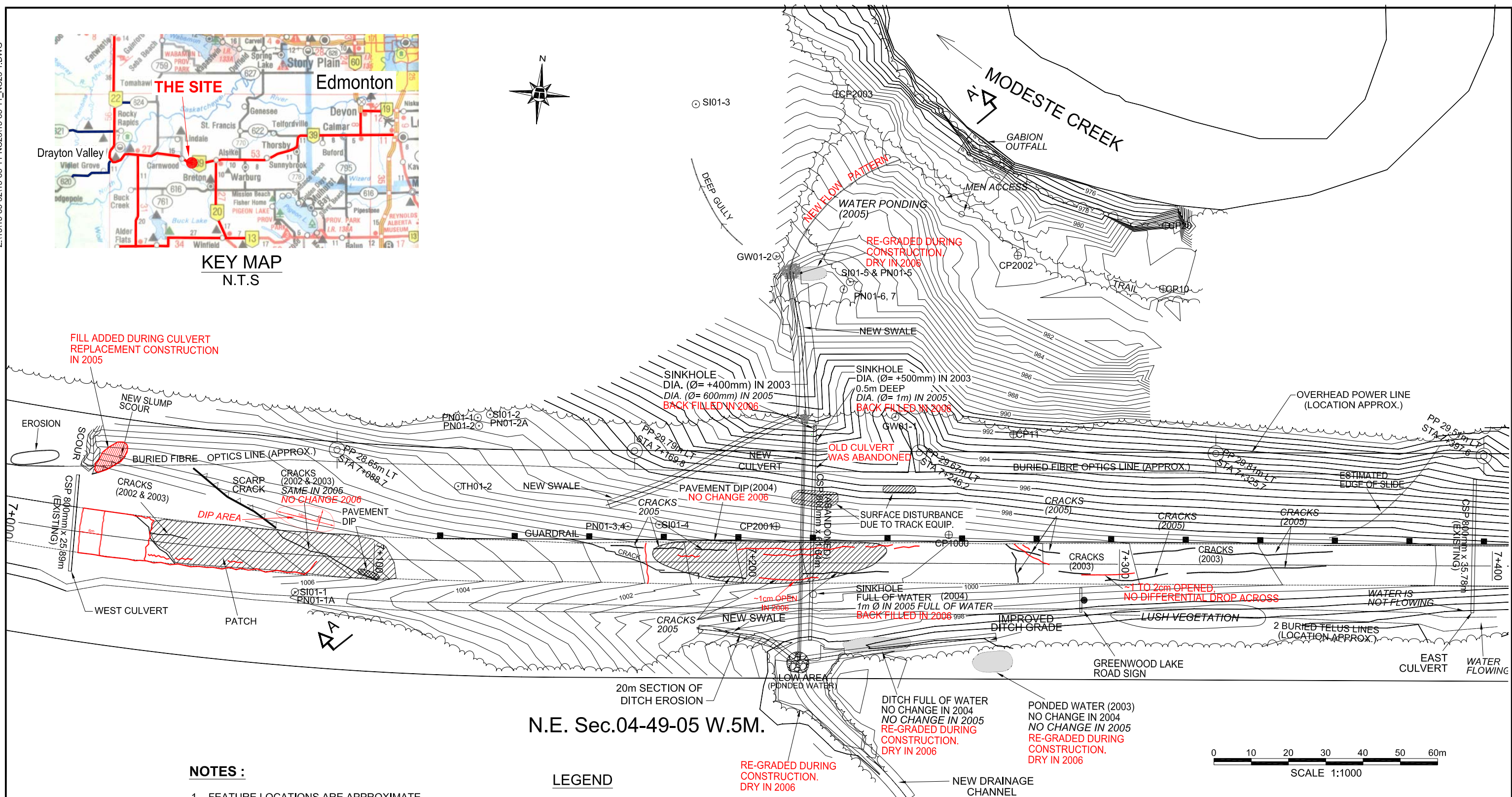


KEY MAP
N.T.S



N.E. Sec.04-49-05 W.5M.

NOTES :

1. FEATURE LOCATIONS ARE APPROXIMATE.
2. PREVIOUS OBSERVATIONS SHOWN IN BLACK
3. MAY 2006 OBSERVATIONS SHOWN IN RED

LEGEND

- INSTRUMENTATION LOCATION
 SI SLOPE INCLINOMETER
 PN PNEUMATIC PIEZOMETER
 SP STANDPIPE PIEZOMETER
 GW GROUNDWATER MONITORING WELL
 CONTOUR INTERVAL 0.5m

BASE PLAN WAS TAKEN FROM THURBER REPORT #15-76-192

THURBER PROJECT #15-85-32

ALBERTA INFRASTRUCTURE & TRANSPORTATION

SITE PLAN

NORTH CENTRAL (STONY PLAIN) 2006
GEOHAZARD ASSESSMENTS

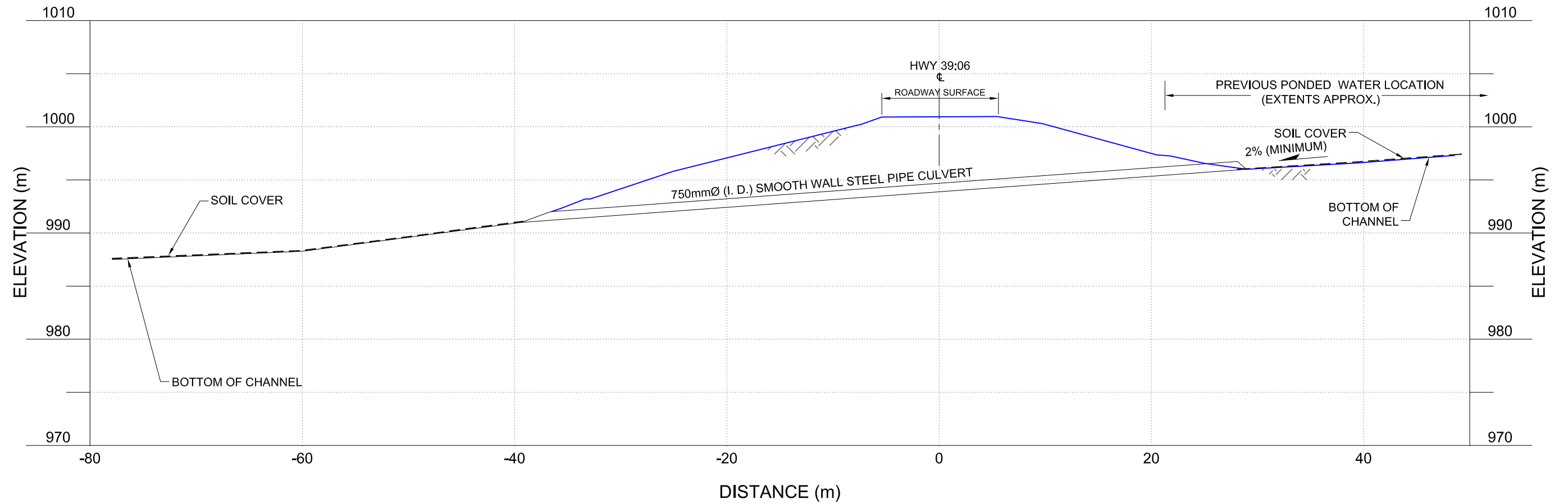
NC23 - HWY 39:06 km 12.6
NE-4-49-5-W5M
GREENWOOD, AB



THURBER ENGINEERING LTD.
GEOTECHNICAL ■ ENVIRONMENTAL ■ MATERIALS

ENGINEER :	RVC	DRAWN :	JW	APPROVED :	
DATE :	AUG. 2006	SCALE :	1:1000	DRAWING No.	FIGURE NC23-1

Z:\15\15-85-32\15-85-11-NC23\15-85-11_NC23-2.DWG-Aug. 24, 2006 8:05am



THIS DRAWING TAKEN FROM THURBER REPORT #15-76-34 & UPDATED ON AUG. 18, 2004
BASE SECTION PROVIDED BY EXH ENGINEERING SERVICES LTD.

THURBER PROJECT #15-85-32

ALBERTA INFRASTRUCTURE & TRANSPORTATION

NEW CULVERT AT 7+215 CROSS SECTION
(AS CONSTRUCTED)

NORTH CENTRAL 2005
GEOHAZARDS ASSESSMENT

NC23 - HWY 39:06 km 12.6
NE-4-49-5-W5M
GREENWOOD, AB



THURBER ENGINEERING LTD.
GEOTECHNICAL • ENVIRONMENTAL • MATERIALS

ENGINEER :

RVC

DRAWN :

JW

APPROVED :

DATE :

JUNE 2006

SCALE :

1:400

DRAWING No.

FIGURE NC23-2