



**Photo 1**

Looking west toward uneven pavement surface, indicating west flank of landslide



**Photo 2**

Vegetation beginning to grow on north embankment; no vegetation growing along top of embankment



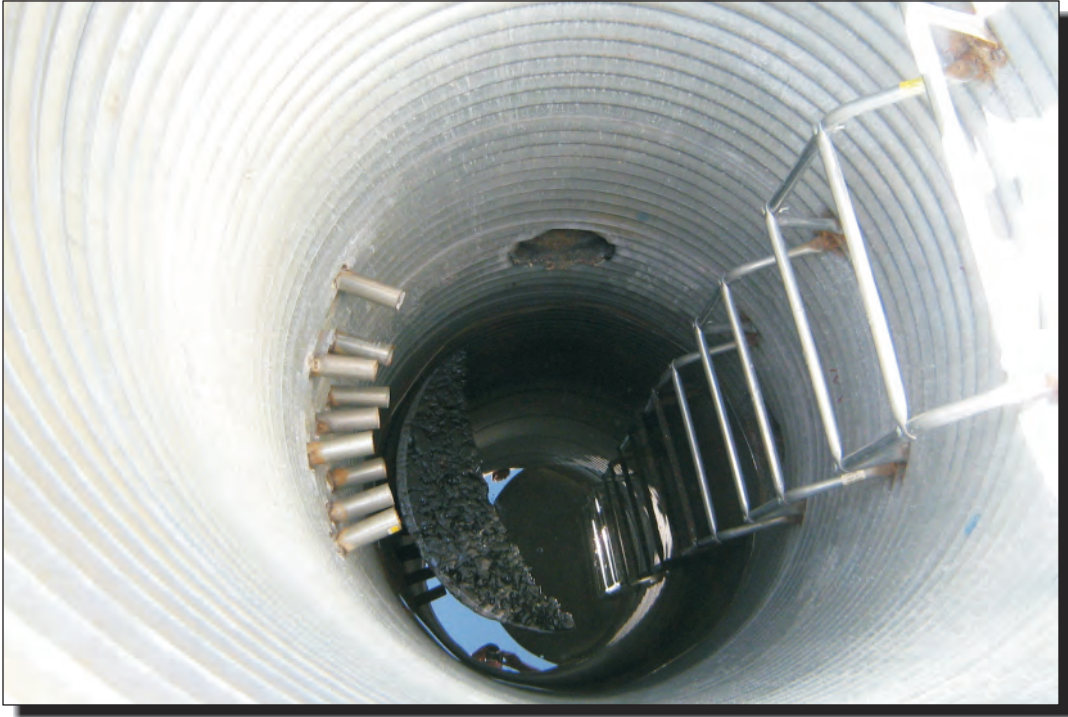


**Photo 3**  
Discharge end of culvert on north sideslope; note the erosion occurring below outlet



**Photo 4**  
Toe drain located near base of north embankment; was placed during construction of passing lane





**Photo 5**  
Inside of east drainage gallery



**Photo 6**  
Cracking of pavement near west flank of slide