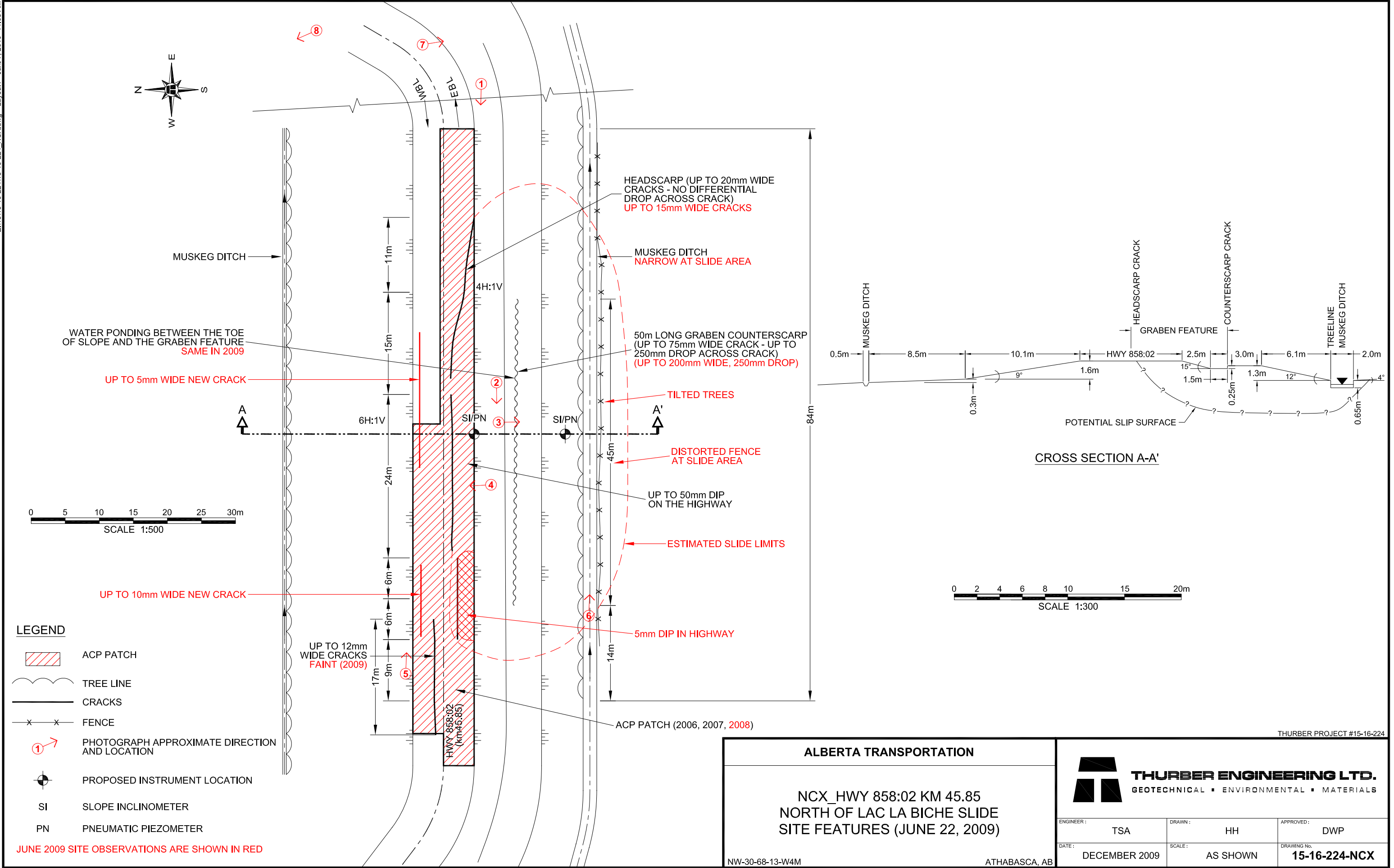


Z:\151515-16-224\15-16-224\_NCX.dwg - Layout1 - Jan. 7, 2010 11:08 AM



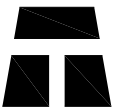
ALBERTA TRANSPORTATION

NCX\_HWY 858:02 KM 45.85  
NORTH OF LAC LA BICHE SLIDE  
SITE FEATURES (JUNE 22, 2009)

NW-30-68-13-W4M

ATHABASCA, AB

THURBER PROJECT #15-16-224

**THURBER ENGINEERING LTD.**  
GEOTECHNICAL ■ ENVIRONMENTAL ■ MATERIALS

ENGINEER :	TSA	DRAWN :	HH	APPROVED :	DWP
DATE :	DECEMBER 2009	SCALE :	AS SHOWN	DRAWING No.	15-16-224-NCX