



Photo 1 – Shallow slope failures on the south end of the site, looking west.

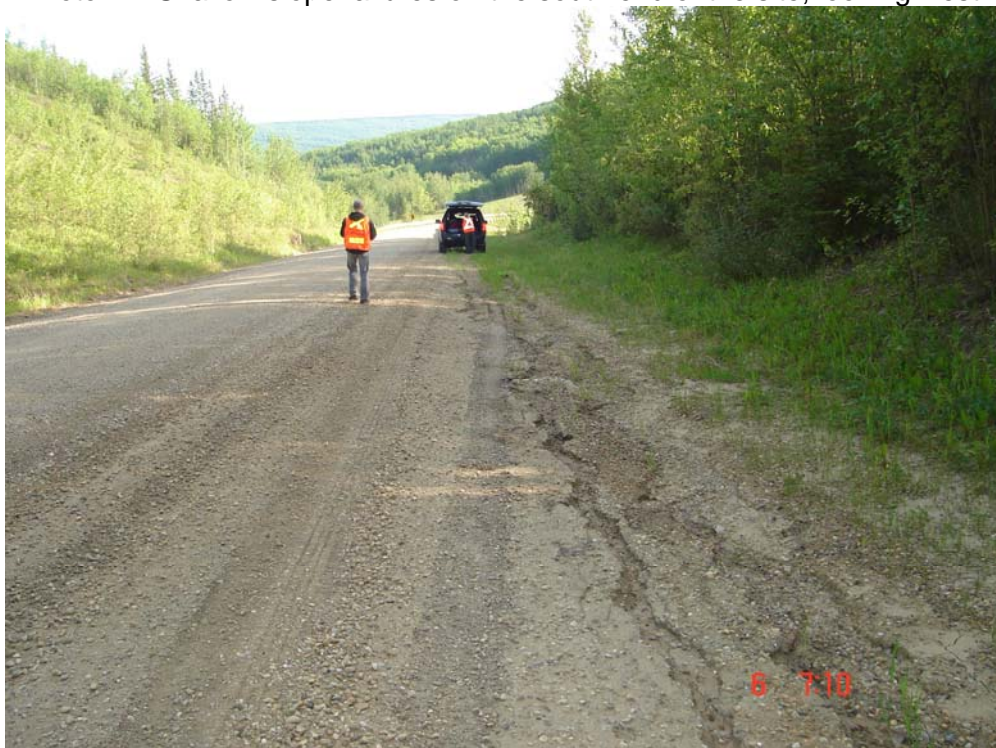


Photo 2 – Ditch erosion on the south end of the site, looking north.





Photo 3 – Earthworks for new culvert installation, looking towards the outlet.



Photo 4 – Earthworks for new culvert installation, looking towards the inlet.



Photo 5 – Highway embankment, looking southeast.



Photo 6 – View of culvert outlet, looking southeast.





Photo 7 - View of culvert inlet, looking northwest



Photo 8 - Shale Slope at Station 43+200, looking southeast.