

Michelin Slides (57+600 to 58+100)



Photo 10.
Cracking at the outside of the corner at the south end of the Michelin slide.

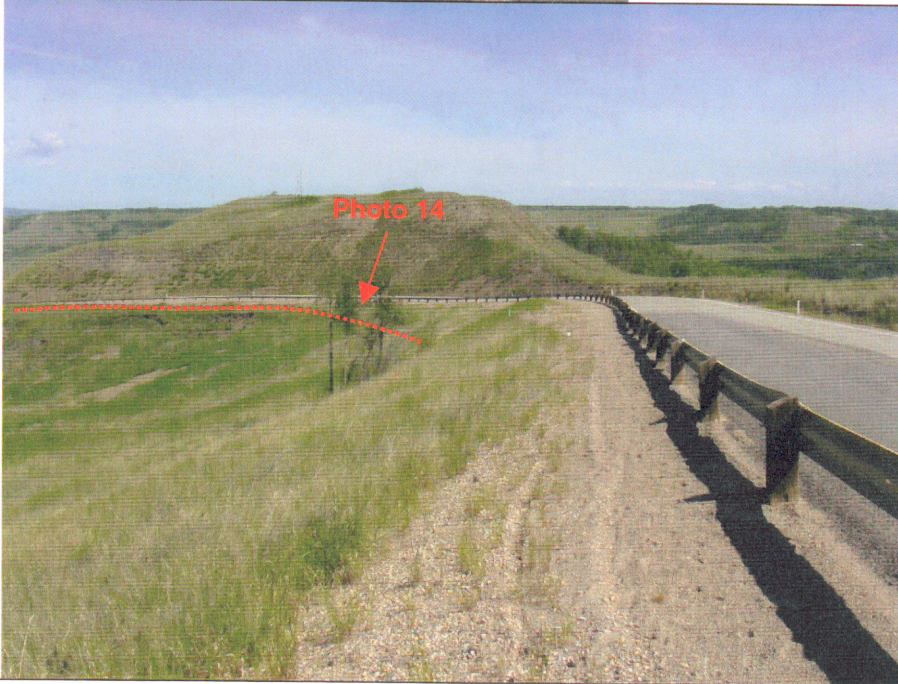


Photo 11.
Overview of the Michelin slide. An anchored retaining wall was constructed downslope of the road in 1997, starting roughly at the road curve in the middle of the picture (dashed line).



Photo 12.
Slide stabilisation
work in the runout
zone below the
Michelin Slide.



Photo 13.
Benches forming
stabilisation works for
the Michelin Slide.



Photo 14.
Slump below the
road, exposing
geotextile in
backscarp. Located
at approx. 58+000.