

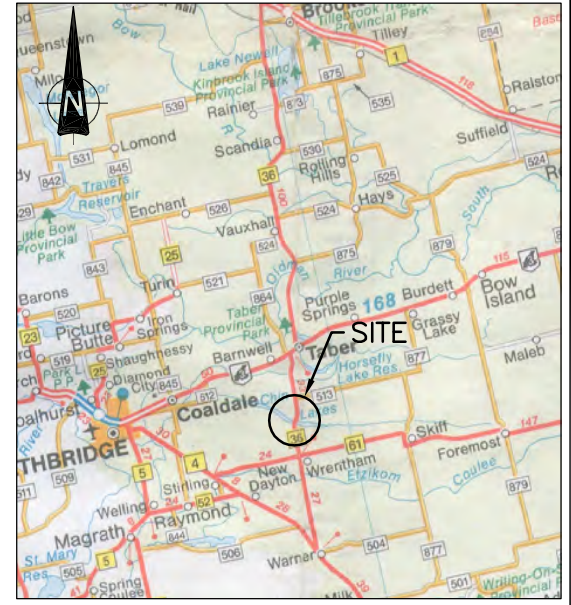
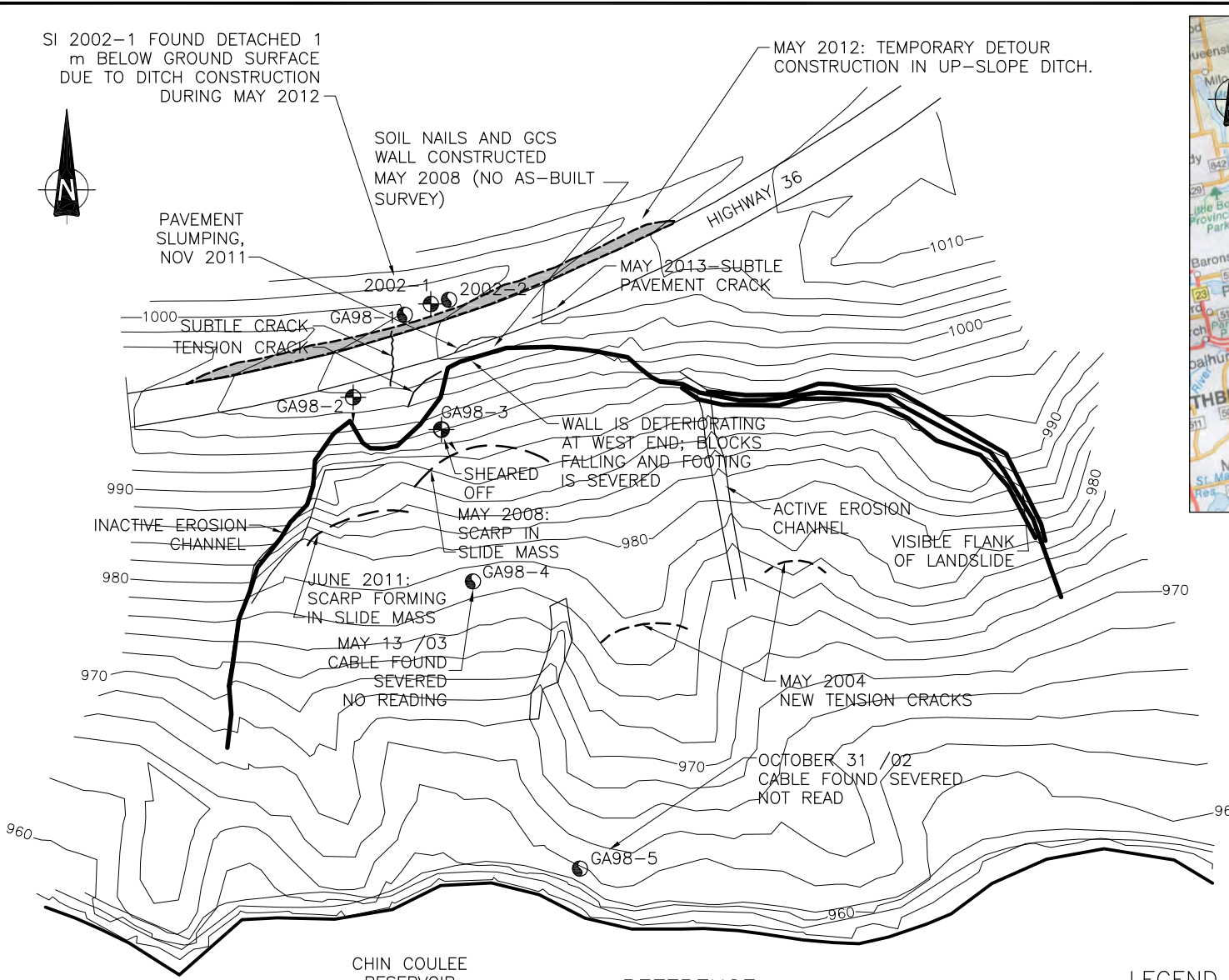
SI 2002-1 FOUND DETACHED 1 m BELOW GROUND SURFACE DUE TO DITCH CONSTRUCTION DURING MAY 2012

MAY 2012: TEMPORARY DETOUR CONSTRUCTION IN UP-SLOPE DITCH.

SOIL NAILS AND GCS WALL CONSTRUCTED MAY 2008 (NO AS-BUILT SURVEY)

PAVEMENT SLUMPING, NOV 2011

MAY 2013-SUBTLE PAVEMENT CRACK



KEY PLAN

NOTE:

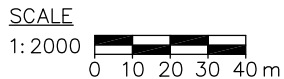
SITE TOPOGRAPHY AND LAYOUT BASED ON FALL 2007 REPORT, AND DOES NOT REFLECT MAY 2008 SOIL NAILING AND GCS WALL CONSTRUCTION.

REFERENCE

DIGITAL CONTOURS PROVIDED BY REID CROWTHER & PARTNERS LTD. FILE:AP-01.DWG (1998).
ELEVATIONS ARE RELATIVE TO ARBITRARY SITE DATUM.

LEGEND

- GA98-2 SLOPE INCLINOMETER WITH A-GROOVE ORIENTATION RELATIVE TO MAGNETIC NORTH.
- GA98-4 PNEUMATIC / STANDPIPE PIEZOMETER



CLIENT:

PROJECT: SOUTHERN REGION GEOHAZARD ASSESSMENT 2013 ANNUAL INSPECTIONS				
TITLE: S5 - HWY 36:02, CHIN COULEE SITE PLAN				
DATE: DECEMBER 2013	JOB No.: CG25399	CAD FILE: 25399H04.dwg	FIGURE No.: FIGURE S5-1	REV. A