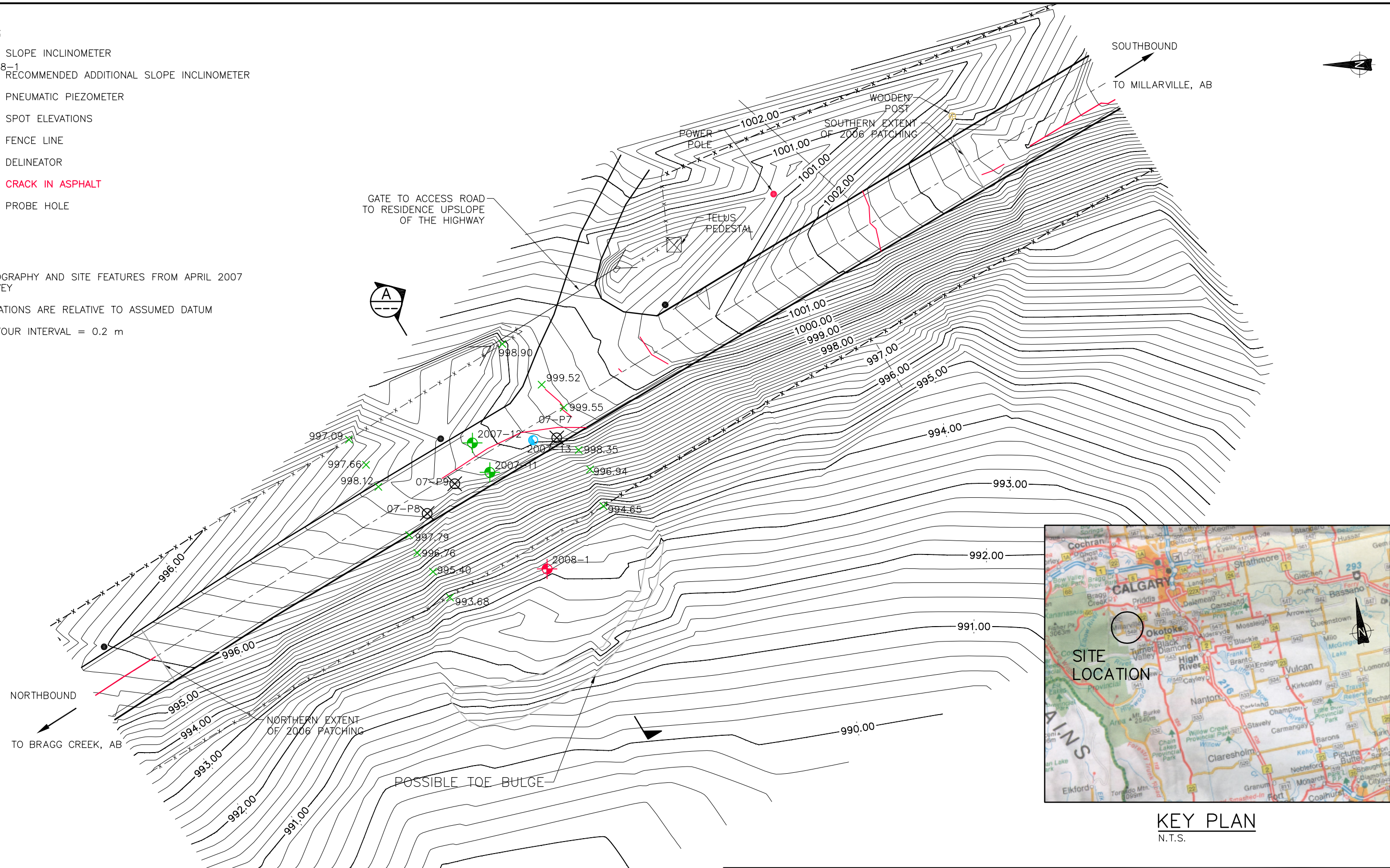


LEGEND:

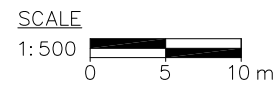
- SLOPE INCLINOMETER
- 2008-1 RECOMMENDED ADDITIONAL SLOPE INCLINOMETER
- PNEUMATIC PIEZOMETER
- 84.48 SPOT ELEVATIONS
- FENCE LINE
- DELINEATOR
- CRACK IN ASPHALT
- PROBE HOLE

NOTES:

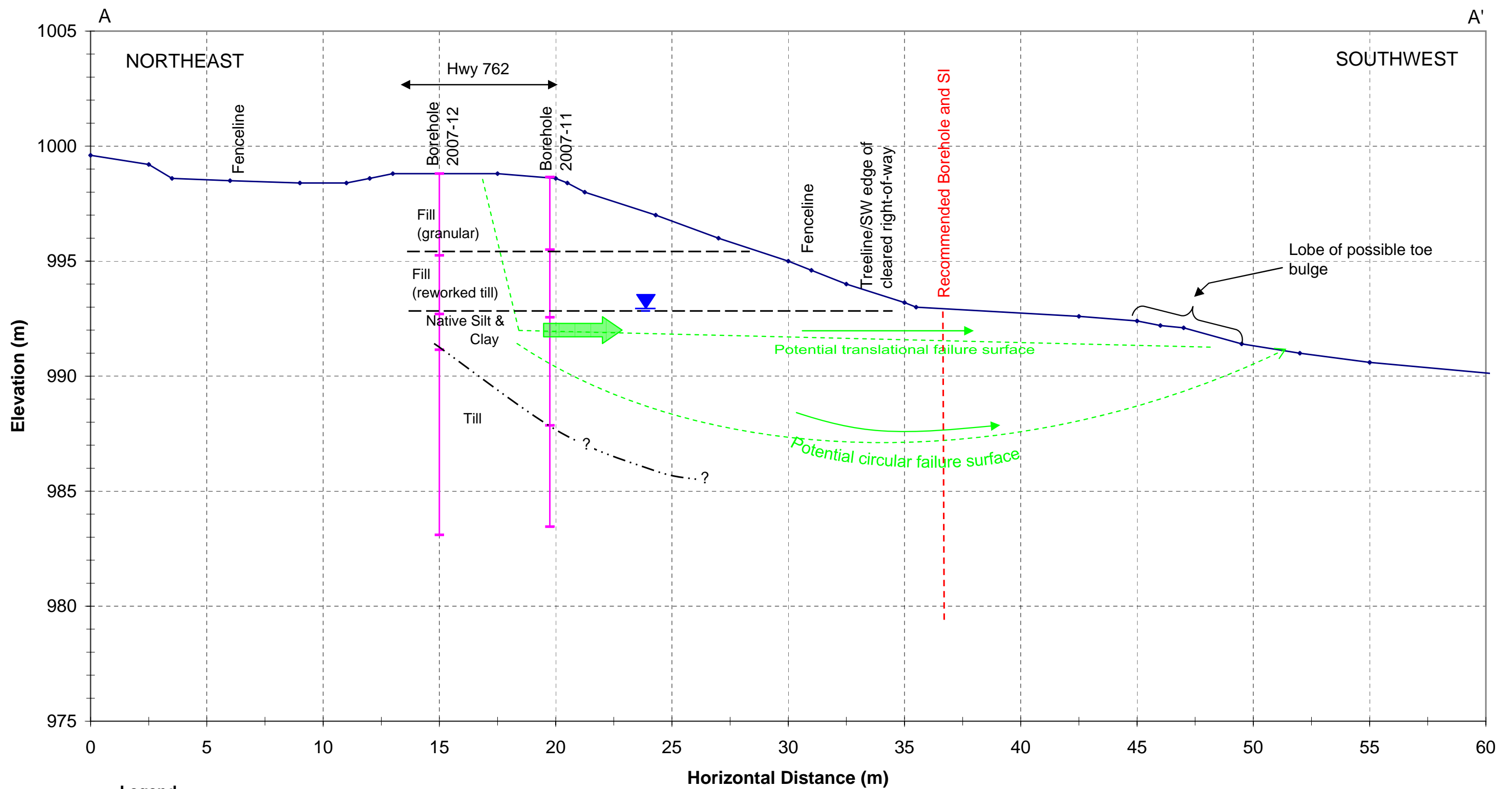
1. TOPOGRAPHY AND SITE FEATURES FROM APRIL 2007 SURVEY
2. ELEVATIONS ARE RELATIVE TO ASSUMED DATUM
3. CONTOUR INTERVAL = 0.2 m






KEY PLAN
N.T.S.



	PROJECT: SOUTHERN REGION GEOHAZARD ASSESSMENT				
	TITLE: HIGHWAY 762:02 S10(A) – ARCHERY RANGE SITE SITE PLAN				
CLIENT:	DATE: AUGUST 2008	JOB No.: CG25277.B	CAD FILE:	FIGURE No.: FIGURE S10(A)-1	REV. A



Legend

-  Movement zone measured in SI
-  Potential piezometer landslide failure
-  Groundwater level interpreted from piezometers in Borehole 2007-13

Client	Alberta Transportation	Figure S-10(A)-2	
Project	Site S10(A) Archery Range Site Highway 762:02	Date: Aug-08	Revision
Section AA' at Boreholes 2007-11 and 2007-12		Job No. CG25277.B	
		File No.:	

