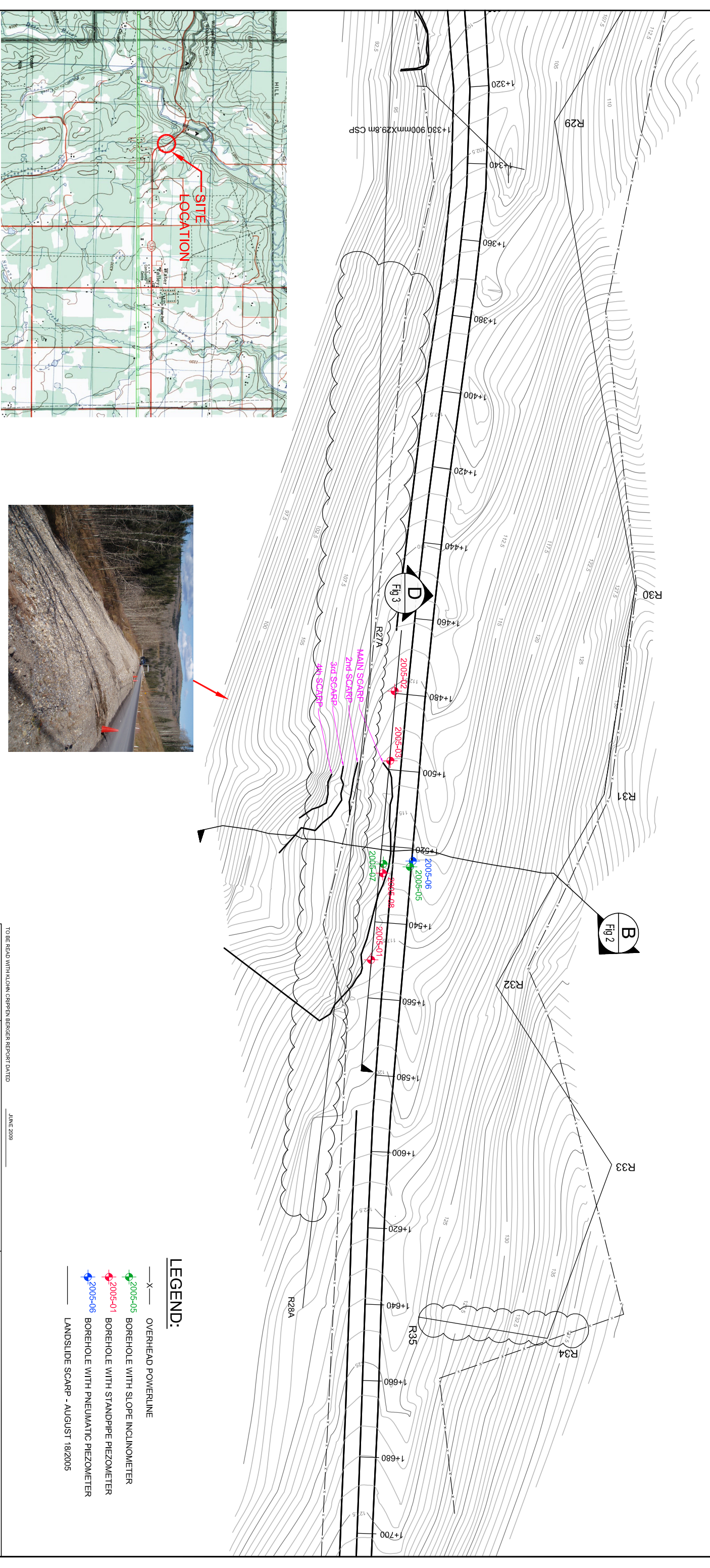
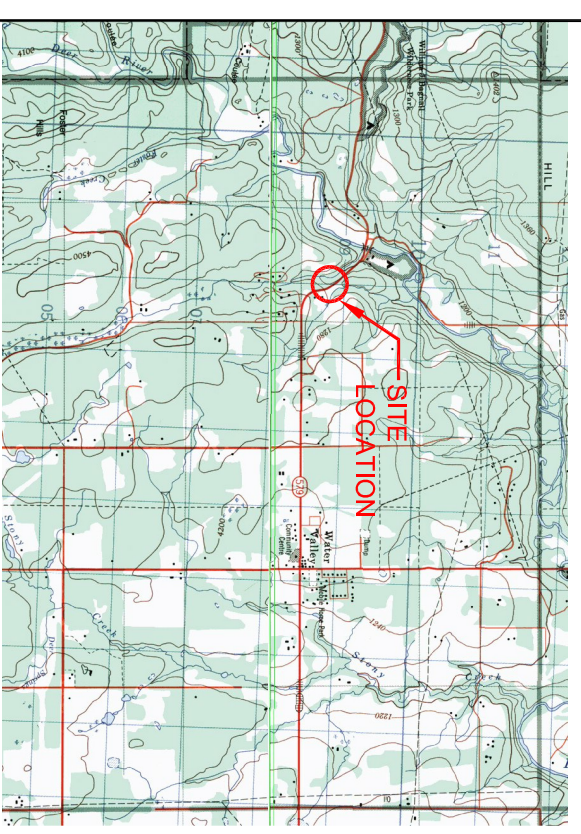


SE 29-29-5-5

- NOTES**
1. SURVEY PERFORMED AUGUST 18 & SEPTEMBER 22, 2005 BY AMEC.
  2. TEST HOLES DRILLED OCTOBER 2005 BY AMEC.
  3. ADDITIONAL GRAVEL PLACED IN SLIDE ZONE AFTER SURVEY (SEE PHOTO).
  4. PHOTO TAKEN OCTOBER 21, 2008.



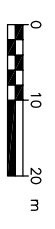
**KEY PLAN**



**LEGEND:**

- X— OVERHEAD POWERLINE
- 2005-05 BOREHOLE WITH SLOPE INCLINOMETER
- 2005-01 BOREHOLE WITH STANDPIPE PIEZOMETER
- 2005-06 BOREHOLE WITH PNEUMATIC PIEZOMETER
- LANDSLIDE SCARP - AUGUST 18/2005

1:1,000



TO BE READ WITH KLOHN CRIPPEN BERGER REPORT DATED

JUNE 2008

CLIENT



PROJECT

CENTRAL REGION  
GEOHAZARD RISK ASSESSMENT

TITLE

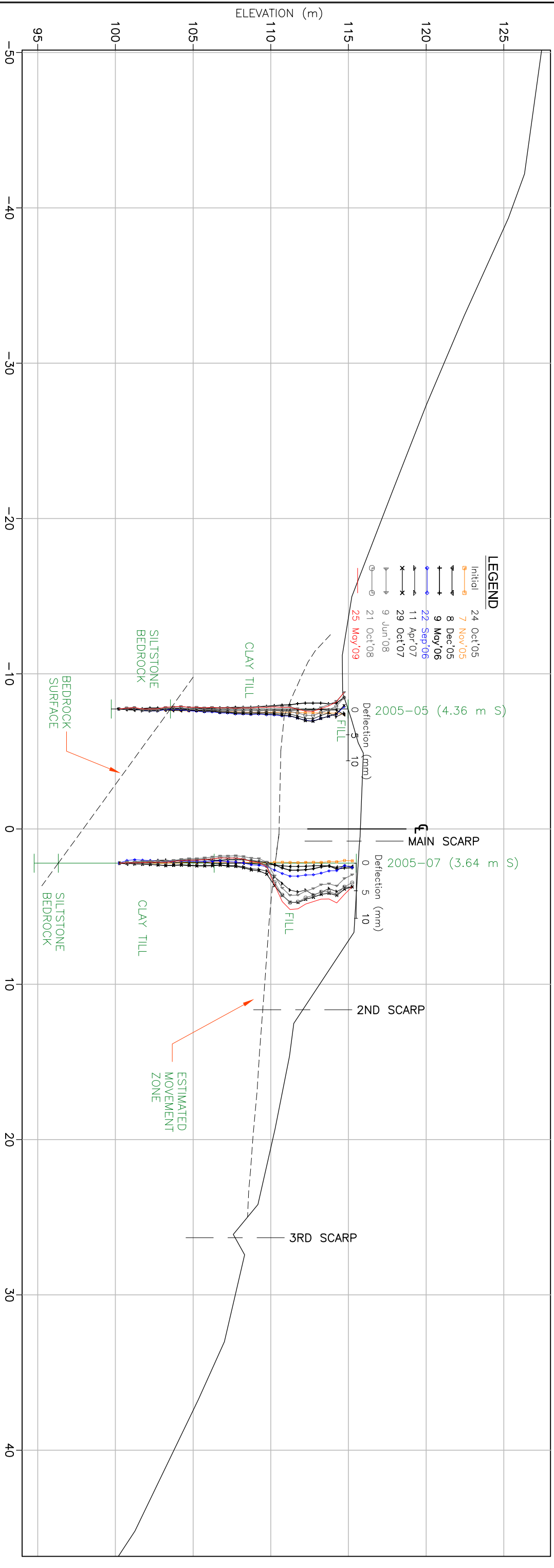
SITE C42 H579 :02 SLIDE  
MAIN SLIDE AREA PLAN

PROJECT No.

A03038A09

FIG. No.

FIGURE 1



**B SECTION**  
Fig 1 SCALE 1:250



- NOTES**
1. INITIAL INCLINOMETER READING OCTOBER 24, 2005.
  2. CURRENT INCLINOMETER READING MAY 25, 2009.

TO BE READ WITH KOHN CRIPPEN BERGER REPORT DATED

JUNE 2008

CLIENT

PROJECT



CENTRAL REGION  
GEOHAZARD RISK ASSESSMENT



SITE C42 H579 :02 SLIDE  
CROSS SECTION B

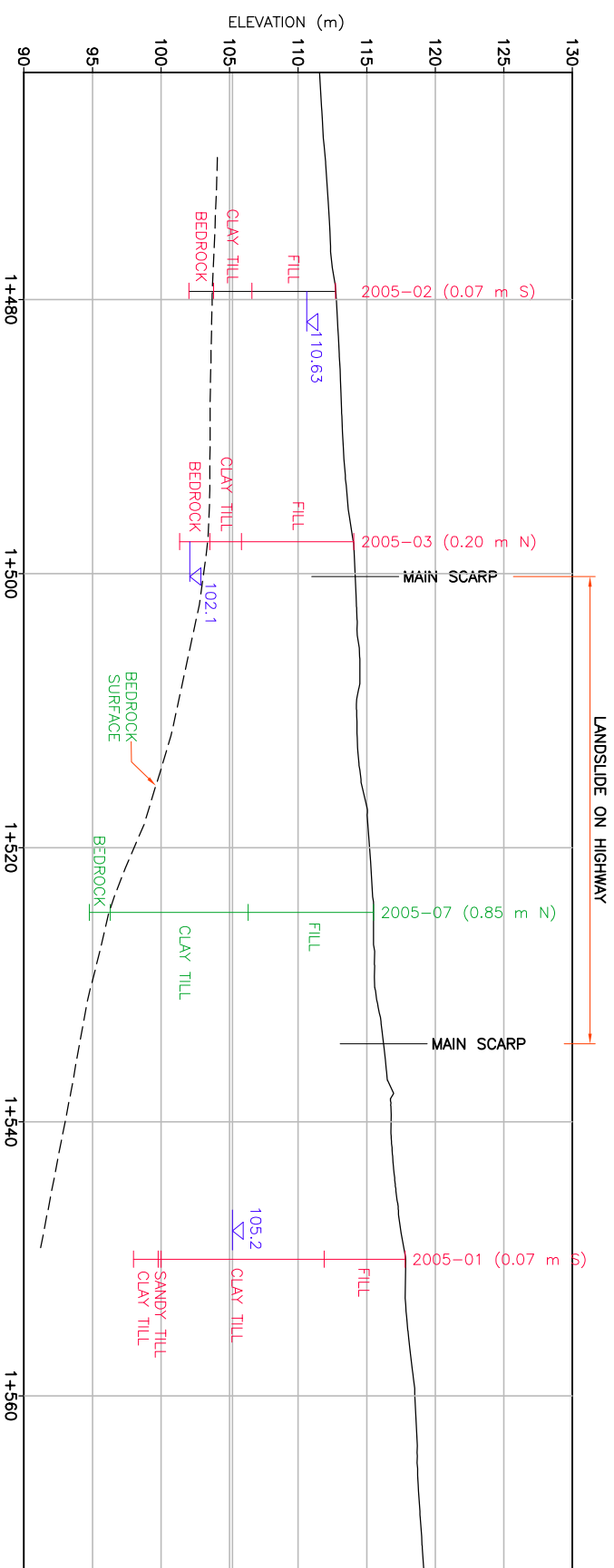
PROJECT No. A03038A09

FIG. No. FIGURE 2

AS A MUTUAL PROTECTION TO OURSELVES, ALL REPORTS AND DRAWINGS ARE SUBMITTED FOR THE CONFIDENTIAL INFORMATION OF OUR CLIENTS AND ARE NOT TO BE USED FOR ANY OTHER PURPOSE WITHOUT OUR WRITTEN APPROVAL.

**NOTES**

1. WATER LEVELS MEASURED MAY 25, 2009.



**D SECTION**  
 Fig 1 SCALE 1:500


SCALE 1:500



**NOT FOR CONSTRUCTION**

TO BE READ WITH KOHN CRIPPEN BERGER REPORT DATED

JUNE 2008

<p>CLIENT</p>  <p><b>Alberta</b> Transportation</p>	<p>PROJECT</p> <p>CENTRAL REGION GEOHAZARD RISK ASSESSMENT</p>
	<p>TITLE</p> <p>SITE C42 H579 :02 SLIDE CROSS SECTION D</p>
<p>PROJECT No.</p> <p>A03038A09</p>	<p>FIG. No.</p> <p>FIGURE 3</p>

AS A MUTUAL PROTECTION TO OURSELVES, ALL REPORTS AND DRAWINGS ARE SUBMITTED FOR THE COMPETENT REVIEW AND APPROVAL OF THE CLIENT. THE CLIENT'S REVIEW AND APPROVAL DOES NOT CONSTITUTE AN ENDORSEMENT OR GUARANTEE OF THE ACCURACY OF THE INFORMATION CONTAINED HEREIN. Kohn Crippen Berger reserves the right to modify or restrict its liability regarding our reports and drawings without written approval.

