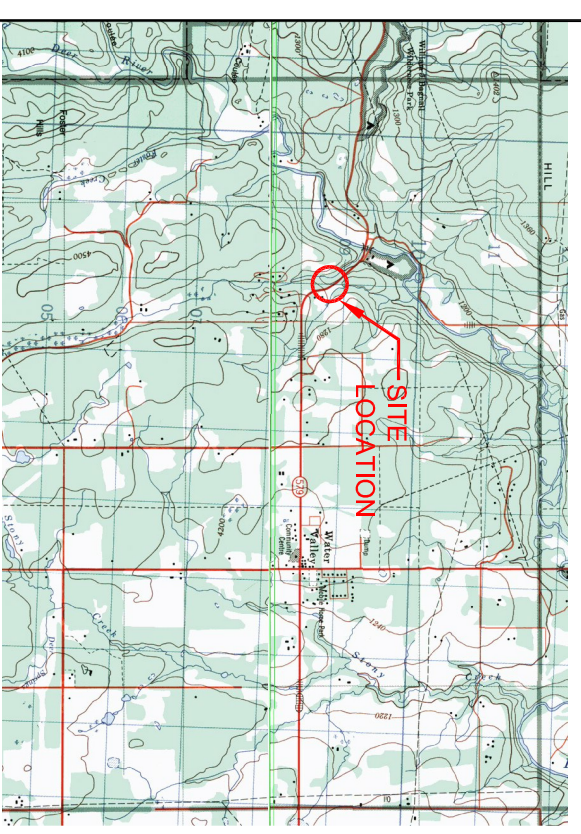
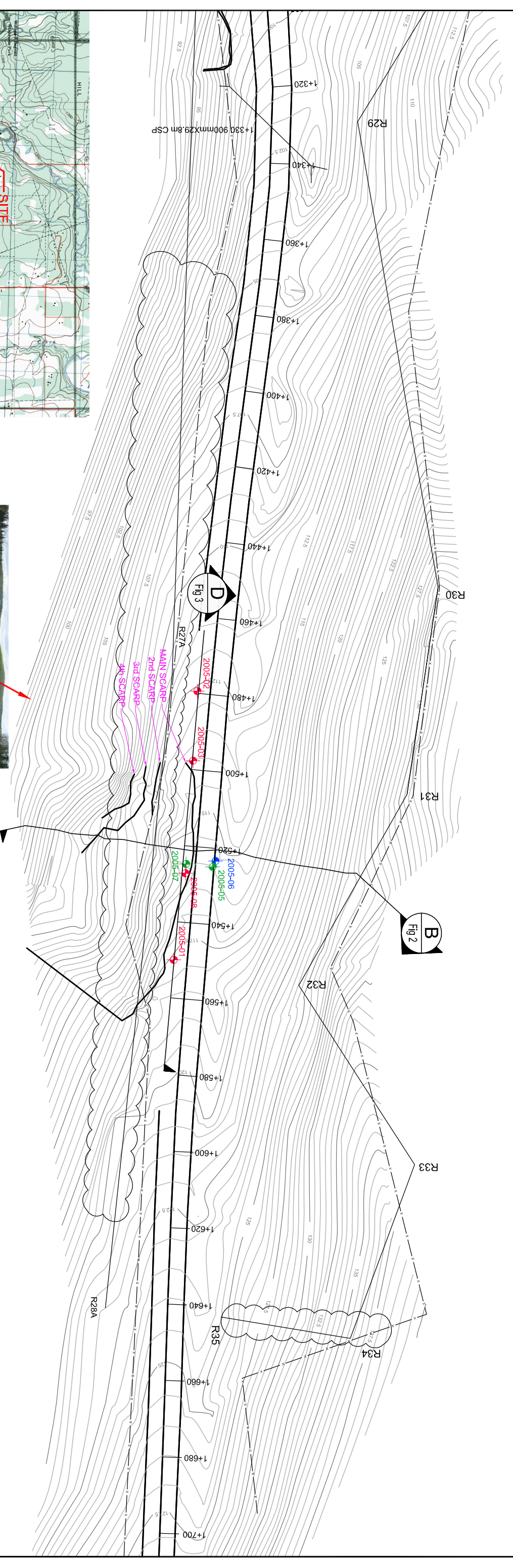


SE 29-29-5-5

- NOTES**
1. SURVEY PERFORMED AUGUST 18 & SEPTEMBER 22, 2005 BY AMEC.
  2. TEST HOLES DRILLED OCTOBER 2005 BY AMEC.
  3. ADDITIONAL GRAVEL PLACED IN SLIDE ZONE AFTER SURVEY (SEE PHOTO).
  4. PHOTO TAKEN MAY 17, 2010.

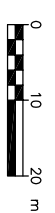


**KEY PLAN**

**LEGEND:**

- X — OVERHEAD POWERLINE
- 2005-05 BOREHOLE WITH SLOPE INCLINOMETER
- 2005-01 BOREHOLE WITH STANDPIPE PIEZOMETER
- 2005-06 BOREHOLE WITH PNEUMATIC PIEZOMETER
- LANDSLIDE SCARP - AUGUST 18/2005

1:1,000



TO BE READ WITH KOHN CRIPPEN REPORT DATED MAY 2010

AS A MUTUAL PROTECTION TO OUR CLIENTS AND OURSELVES, ALL REPORTS AND DRAWINGS ARE SUBMITTED FOR THE CLIENT'S REVIEW AND APPROVAL. THE CLIENT'S REVIEW AND APPROVAL IS REQUIRED FOR PROJECT AND AUTHORIZATION FOR USE AND/OR PUBLICATION OF ANY INFORMATION CONTAINED HEREIN. OUR RESPONSIBILITY IS LIMITED TO THE INFORMATION PROVIDED AND WE DO NOT WARRANT ANY INFORMATION CONTAINED HEREIN.

CLIENT

**Alberta**  
Transportation

**Kohn Crippen Berger**

PROJECT

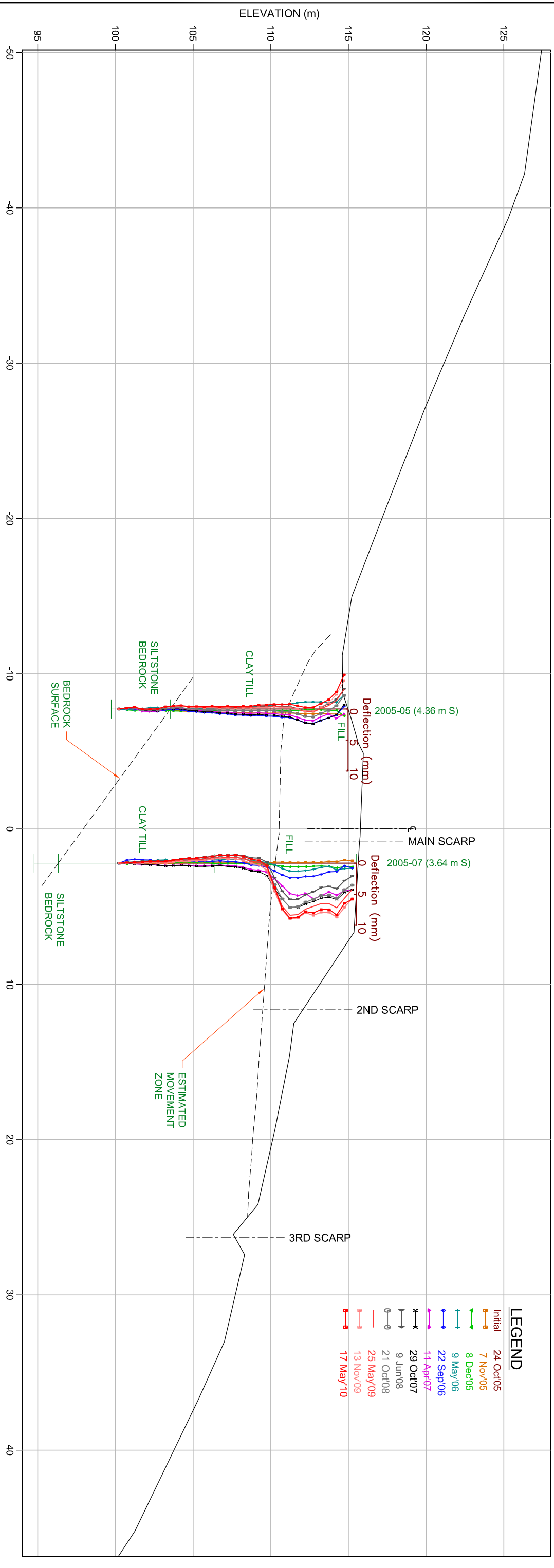
CENTRAL REGION  
GEOHAZARD RISK ASSESSMENT

TITLE

SITE C42 H579 :02 SLIDE  
MAIN SLIDE AREA PLAN

PROJECT No. A03038A10

FIG. No. FIGURE 1



- NOTES:**
1. INITIAL INCLINOMETER READING OCTOBER 24, 2005.
  2. CURRENT INCLINOMETER READING MAY 17, 2010.



TO BE READ WITH KOHN CRIPPEN BERGER REPORT DATED MAY 2010

CLIENT: **Alberta Transportation**

PROJECT: **CENTRAL REGION GEOHAZARD RISK ASSESSMENT**

TITLE: **SITE C42 H579 :02 SLIDE CROSS SECTION B**

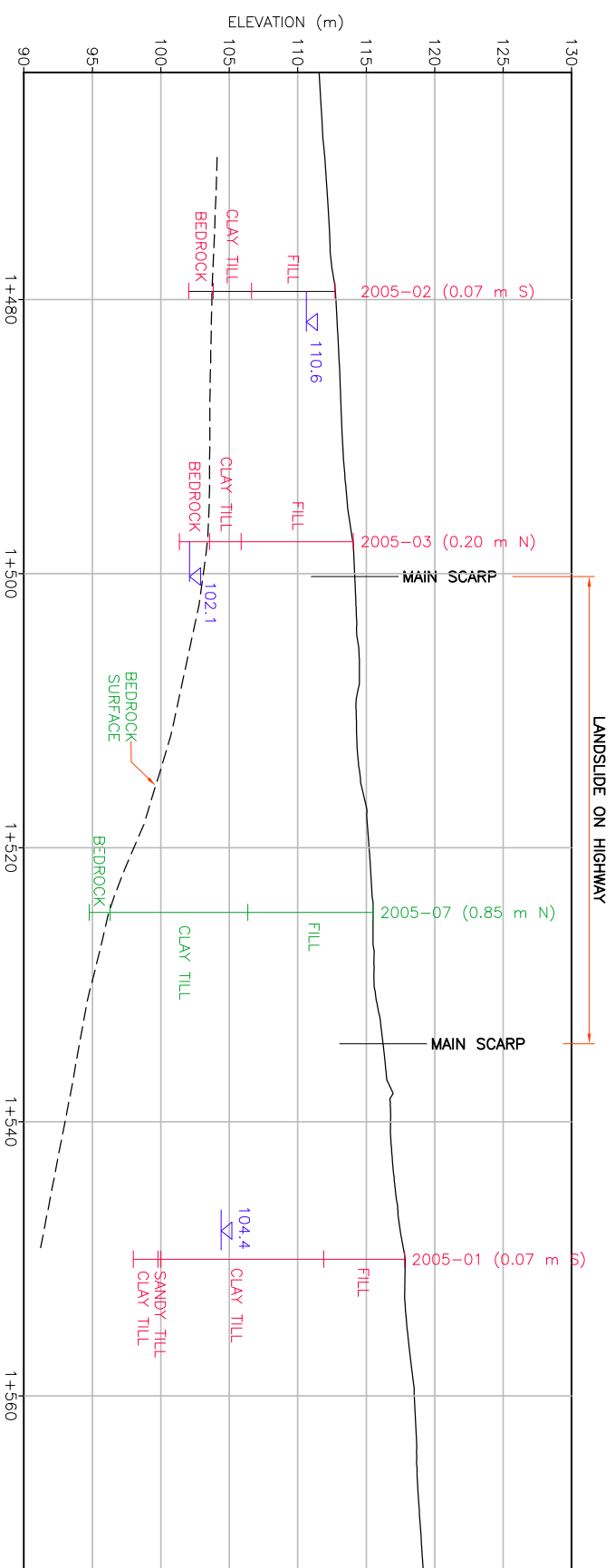
PROJECT No: **A03038A10** FIG. No: **FIGURE 2**

AS A MUTUAL PROTECTION TO OURSELVES, ALL REPORTS AND DRAWINGS ARE SUBMITTED FOR THE CONFIDENTIAL INFORMATION OF OUR CLIENTS AND ARE NOT TO BE USED FOR ANY OTHER PURPOSE WITHOUT OUR WRITTEN APPROVAL.

**Kohn Crippen Berger**

**NOTES**

1. WATER LEVELS MEASURED MAY 17, 2010.



**D SECTION**  
 Fig 1 SCALE 1:500

SCALE 1:500



**NOT FOR CONSTRUCTION**

TO BE READ WITH KOHN CRIPPEN BERGER REPORT DATED

MAY 2010

CLIENT



PROJECT

CENTRAL REGION  
 GEOHAZARD RISK ASSESSMENT

TITLE

SITE C42 H579 :02 SLIDE  
 CROSS SECTION D

PROJECT No.

A03038A10

FIG. No.

FIGURE 3