

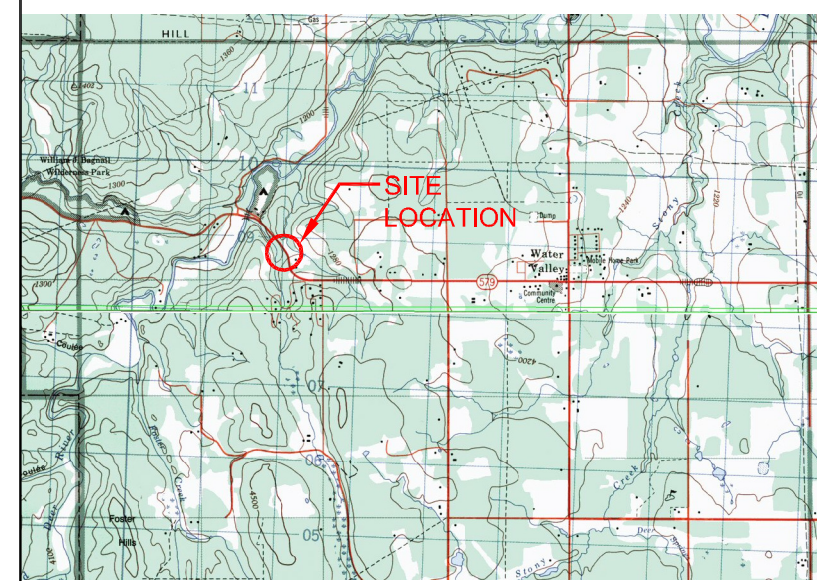
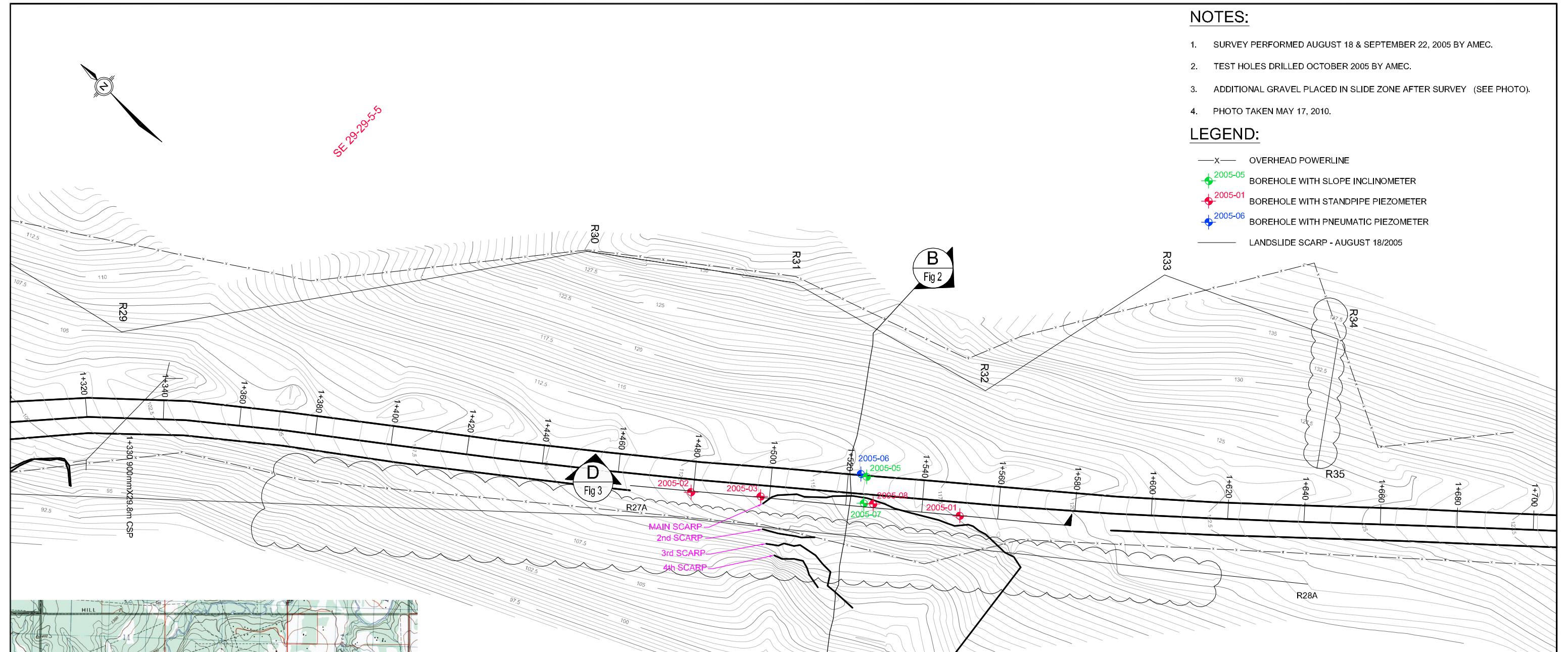
NOTES:

1. SURVEY PERFORMED AUGUST 18 & SEPTEMBER 22, 2005 BY AMEC.
2. TEST HOLES DRILLED OCTOBER 2005 BY AMEC.
3. ADDITIONAL GRAVEL PLACED IN SLIDE ZONE AFTER SURVEY (SEE PHOTO).
4. PHOTO TAKEN MAY 17, 2010.

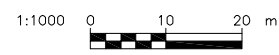
LEGEND:

- X — OVERHEAD POWERLINE
- 2005-05 BOREHOLE WITH SLOPE INCLINOMETER
- 2005-01 BOREHOLE WITH STANDPIPE PIEZOMETER
- 2005-06 BOREHOLE WITH PNEUMATIC PIEZOMETER
- LANDSLIDE SCARP - AUGUST 18/2005

SE 29-29-5-5

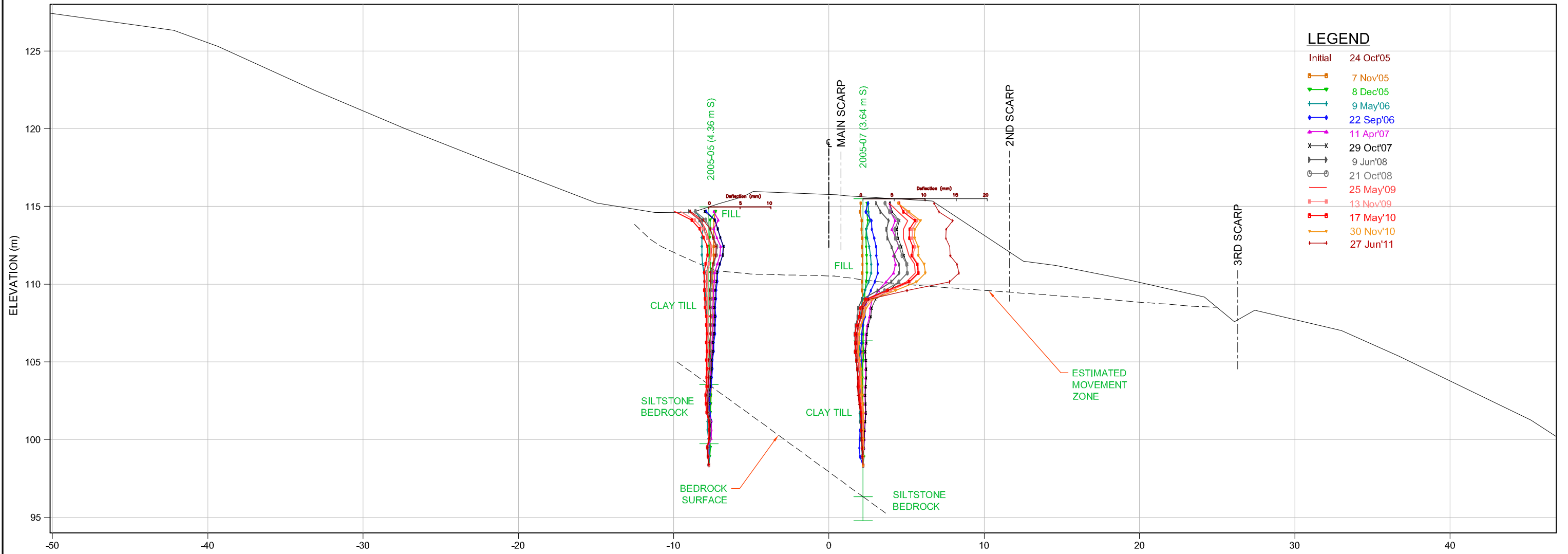


KEY PLAN



TO BE READ WITH KLOHN CRIPPEN BERGER REPORT DATED JULY 2011

<small>AS A MUTUAL PROTECTION TO OUR CLIENT, THE PUBLIC AND OURSELVES, ALL REPORTS AND DRAWINGS ARE SUBMITTED FOR THE CONFIDENTIAL INFORMATION OF OUR CLIENT FOR A SPECIFIC PROJECT AND AUTHORIZATION FOR USE AND/OR PUBLICATION OF DATA STATEMENTS, CONCLUSIONS OR ABSTRACTS FROM OR REGARDING OUR REPORTS AND DRAWINGS IS RESERVED PENDING OUR WRITTEN APPROVAL.</small>	Government of Alberta Transportation	PROJECT CENTRAL REGION GEOHAZARD RISK ASSESSMENT
		TITLE SITE C42 H579 :02 SLIDE MAIN SLIDE AREA PLAN
PROJECT No. A03038A11		FIG. No. FIGURE 1



LEGEND

- Initial 24 Oct'05
- 7 Nov'05
- 8 Dec'05
- 9 May'06
- 22 Sep'06
- 11 Apr'07
- x x 29 Oct'07
- 9 Jun'08
- 21 Oct'08
- 25 May'09
- 13 Nov'09
- 17 May'10
- 30 Nov'10
- 27 Jun'11

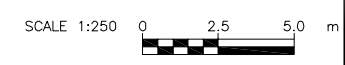
B SECTION
Fig 1 SCALE 1:250

NOTES:

1. INITIAL INCLINOMETER READING OCTOBER 24, 2005.
2. CURRENT INCLINOMETER READING JUNE 27, 2011.

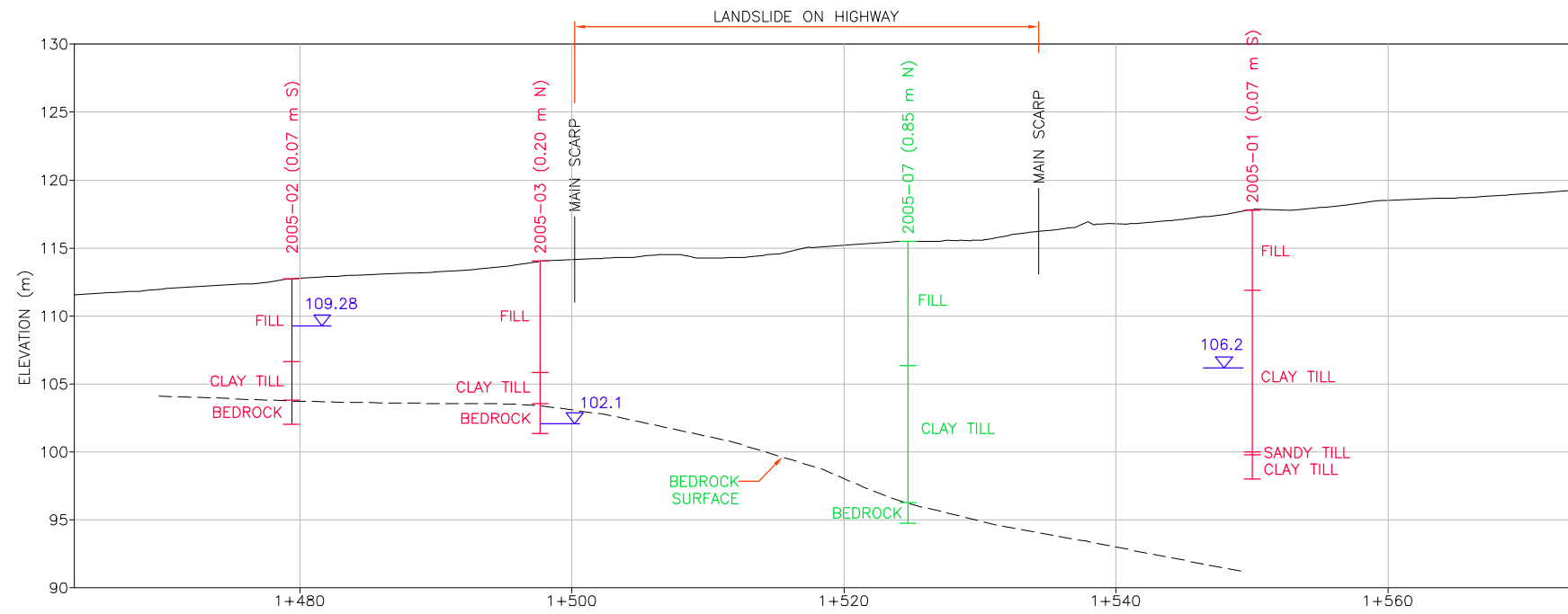
TO BE READ WITH KLOHN CRIPPEN BERGER REPORT DATED JULY 2011

AS A MUTUAL PROTECTION TO OUR CLIENT, THE PUBLIC AND OURSELVES, ALL REPORTS AND DRAWINGS ARE SUBMITTED FOR THE CONFIDENTIAL INFORMATION OF OUR CLIENT FOR A SPECIFIC PROJECT AND AUTHORIZATION FOR USE AND/OR PUBLICATION OF DATA STATEMENTS, CONCLUSIONS OR ABSTRACTS FROM OR REGARDING OUR REPORTS AND DRAWINGS IS RESERVED PENDING OUR WRITTEN APPROVAL.	Government of Alberta Transportation	PROJECT CENTRAL REGION GEOHAZARD RISK ASSESSMENT	
		TITLE SITE C42 H579 :02 SLIDE CROSS SECTION B	
		PROJECT No. A03038A11	FIG. No. FIGURE 2



NOTE:

1. WATER LEVELS MEASURED JUNE 27, 2011.



D SECTION
 Fig 1 SCALE 1:500

NOT FOR CONSTRUCTION

TO BE READ WITH KLOHN CRIPPEN BERGER REPORT DATED JULY 2011

<p>AS A MUTUAL PROTECTION TO OUR CLIENT, THE PUBLIC AND OURSELVES, ALL REPORTS AND DRAWINGS ARE SUBMITTED FOR THE CONFIDENTIAL INFORMATION OF OUR CLIENT FOR A SPECIFIC PROJECT AND AUTHORIZATION FOR USE AND/OR PUBLICATION OF DATA STATEMENTS, CONCLUSIONS OR ABSTRACTS FROM OR REGARDING OUR REPORTS AND DRAWINGS IS RESERVED PENDING OUR WRITTEN APPROVAL.</p>	<p>CLIENT</p> <p>Government of Alberta Transportation</p>	<p>PROJECT</p> <p>CENTRAL REGION GEOHAZARD RISK ASSESSMENT</p>
	<p>Klohn Crippen Berger</p>	<p>TITLE</p> <p>SITE C42 H579 :02 SLIDE CROSS SECTION D</p>
<p>PROJECT No.</p> <p>A03038A11</p>		<p>FIG. No.</p> <p>FIGURE 3</p>



A03038A08.Figures3

KCC-F-044