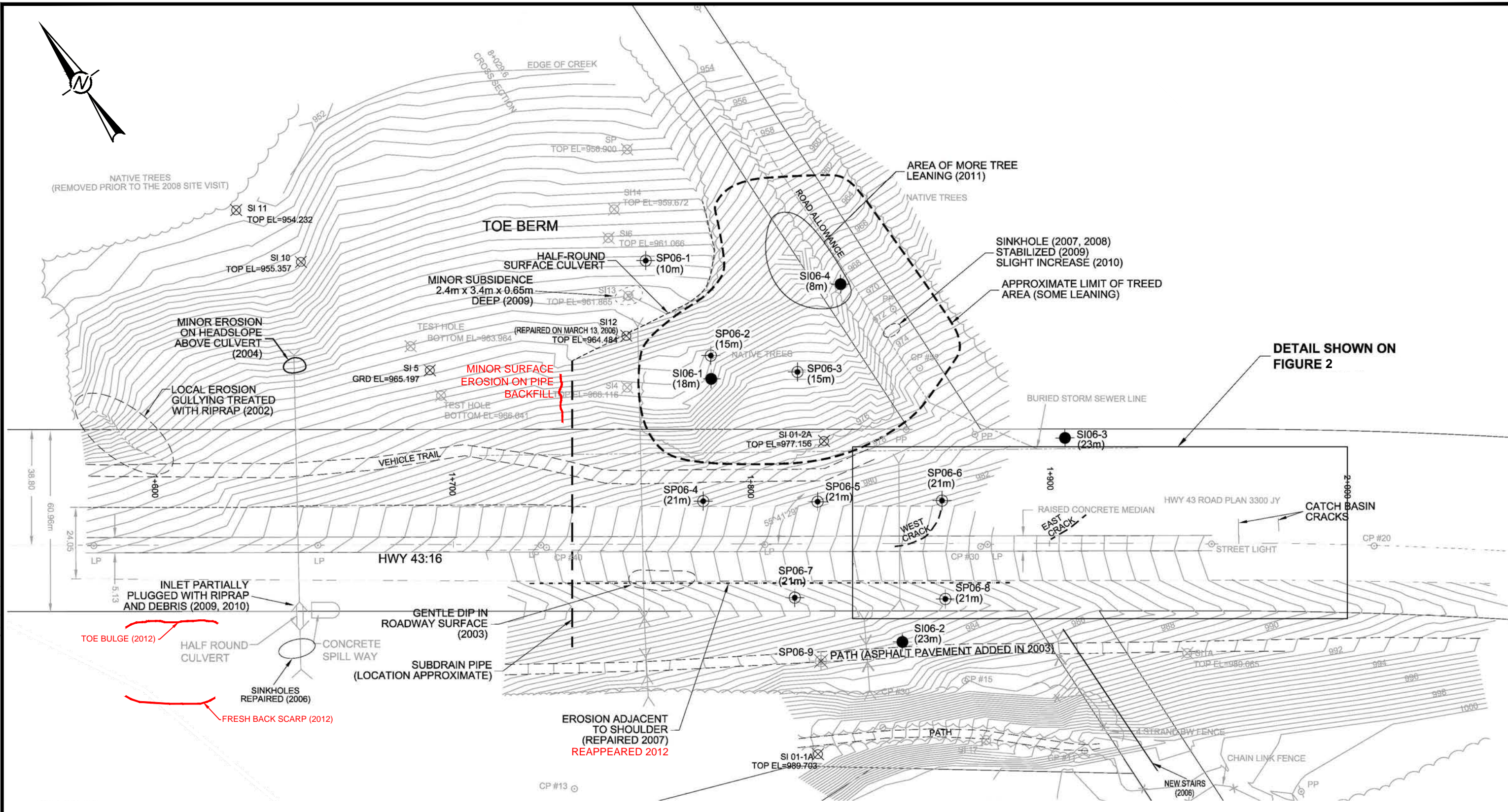


L:\2012\1376\12-1376-0017\2000\Report\_A\Fig1\_12137600172000A003\_NC1\_WhitecourtSitePlan.dwg | Layout: Layout | Modified: JE Bentley 01/17/2013 2:13 PM | Plotted: JE Bentley 01/17/2013



- LEGEND**
- ⊗ SI 01-2A ACTIVE SLOPE INCLINOMETERS
  - ⊗ SI 14 INOPERABLE INSTRUMENTS
  - NEW STANDPIPE PIEZOMETER LOCATIONS
  - NEW SLOPE INCLINOMETER LOCATIONS
  - (15m) INSTALLATION DEPTH OF NEW INSTRUMENT

**NOTES**

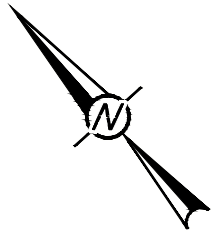
FEATURE LOCATIONS ARE APPROXIMATE.  
 PREVIOUS OBSERVATIONS SHOWN IN BLACK  
 2012 OBSERVATIONS SHOWN IN RED



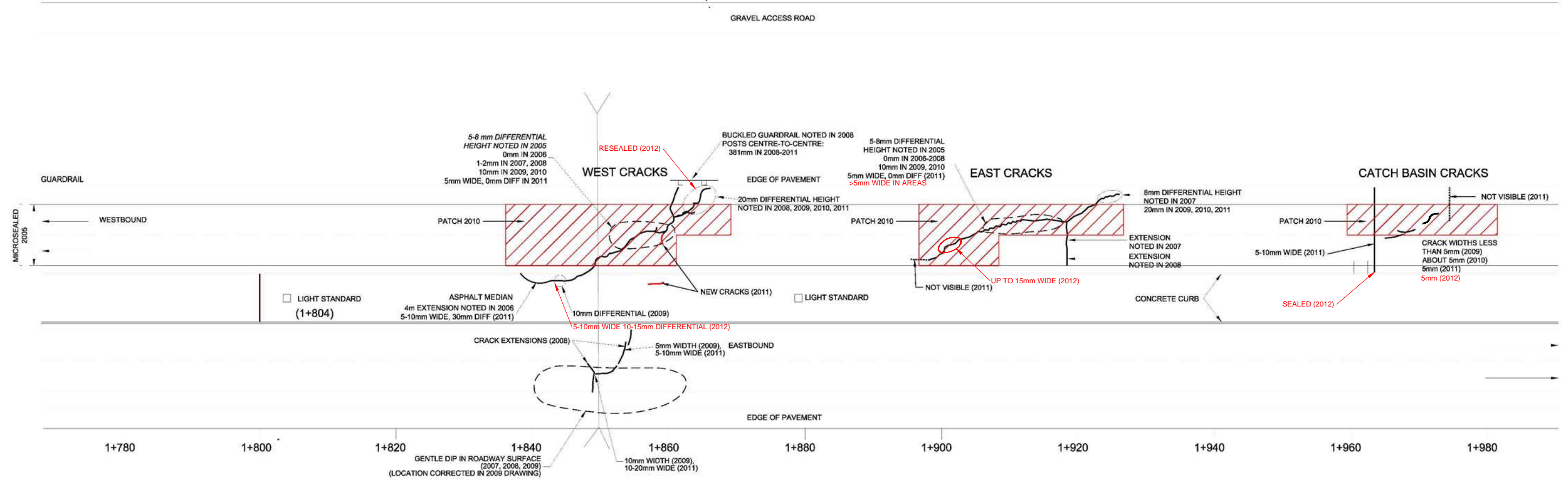
<b>PROJECT</b>			
ALBERTA TRANSPORTATION GEOHAZARD MONITORING PROGRAM			
<b>TITLE</b>			
NC1 WHITECOURT SITE PLAN			
<b>PROJECT No.</b> 12.1376.0017.2000		<b>FILE No.</b> 12137600172000A003	
DESIGN	EML	25/09/2012	SCALE AS SHOWN
CADD	AW	26/09/2012	
CHECK	EML	17/01/2013	
REVIEW	IDD	17/01/2013	



**FIGURE 1**



SI01-2A (LOCATION APPROX.)



**LEGEND**

- SLOPE INCLINOMETER
- LOCATIONS OF FEATURES ARE APPROXIMATE
- WIDTH OF ROADWAY EXAGGERATED
- SCALE 1:600 ALONG ROADWAY ALIGNMENT

**NOTES**

1. FEATURE LOCATIONS ARE APPROXIMATE.
2. PREVIOUS OBSERVATIONS SHOWN IN BLACK
3. 2012 OBSERVATIONS SHOWN IN RED



PROJECT				ALBERTA TRANSPORTATION GEOHAZARD MONITORING PROGRAM			
TITLE				NC1 WHITECOURT SITE PLAN			
PROJECT No.		12.1376.0017.2000		FILE No.		12137600172000A004	
DESIGN	EML	25/09/2012	SCALE		AS SHOWN		
CADD	AW	26/09/2012					
CHECK	EML	17/01/2013					
REVIEW	IDD	17/01/2013					



**FIGURE 2**

L:\2012\1376\12-1376-0017\2000\Report\_A\Fig2\_12137600172000A004\_NC1\_WhitecourtDetailedSitePlan.dwg | Layout: Layout | Modified: JE Bentley 01/17/2013 2:22 PM | Plotted: JE Bentley 01/17/2013