

Alberta
2014

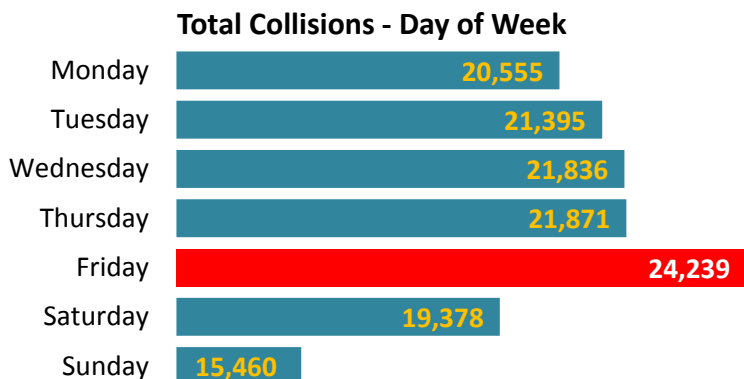
Collision Facts

- 369 people killed ■
- 18,745 people injured ■
- 144,740 collisions ■

October 2015

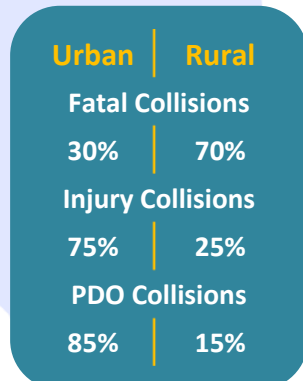
Collision Facts

■ 369 people killed ■ 18,745 people injured ■ 144,740 collisions ■

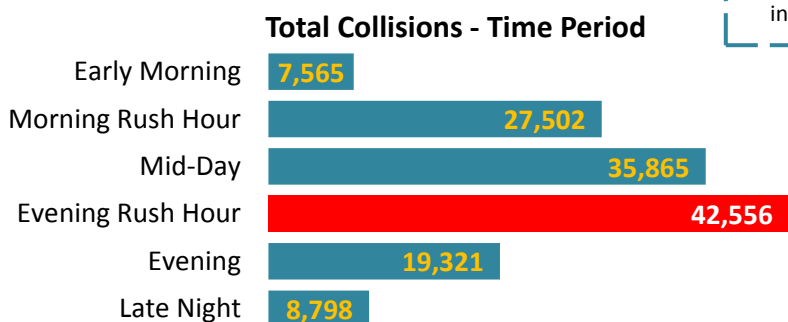


Total Number of Collisions

Fatal	328
Injury	14,244
PDO	130,168
Total	144,740



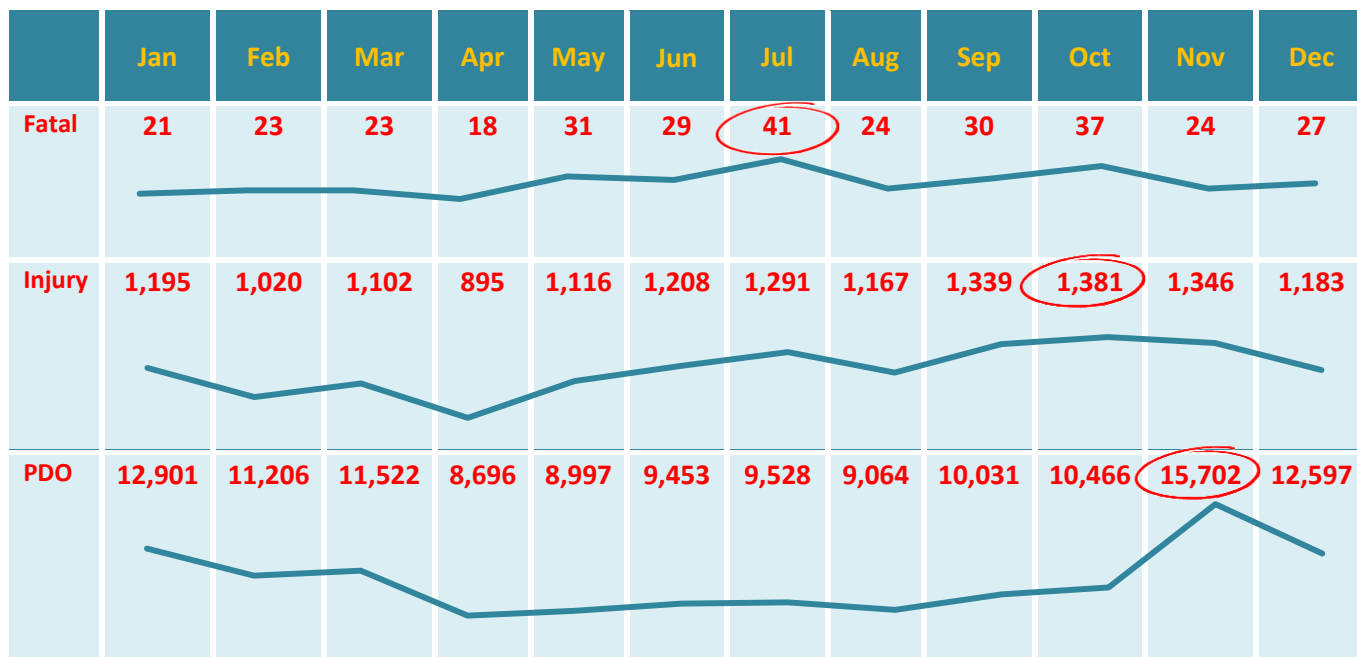
PDO means 'Property Damage Only';
in other words, nobody was hurt



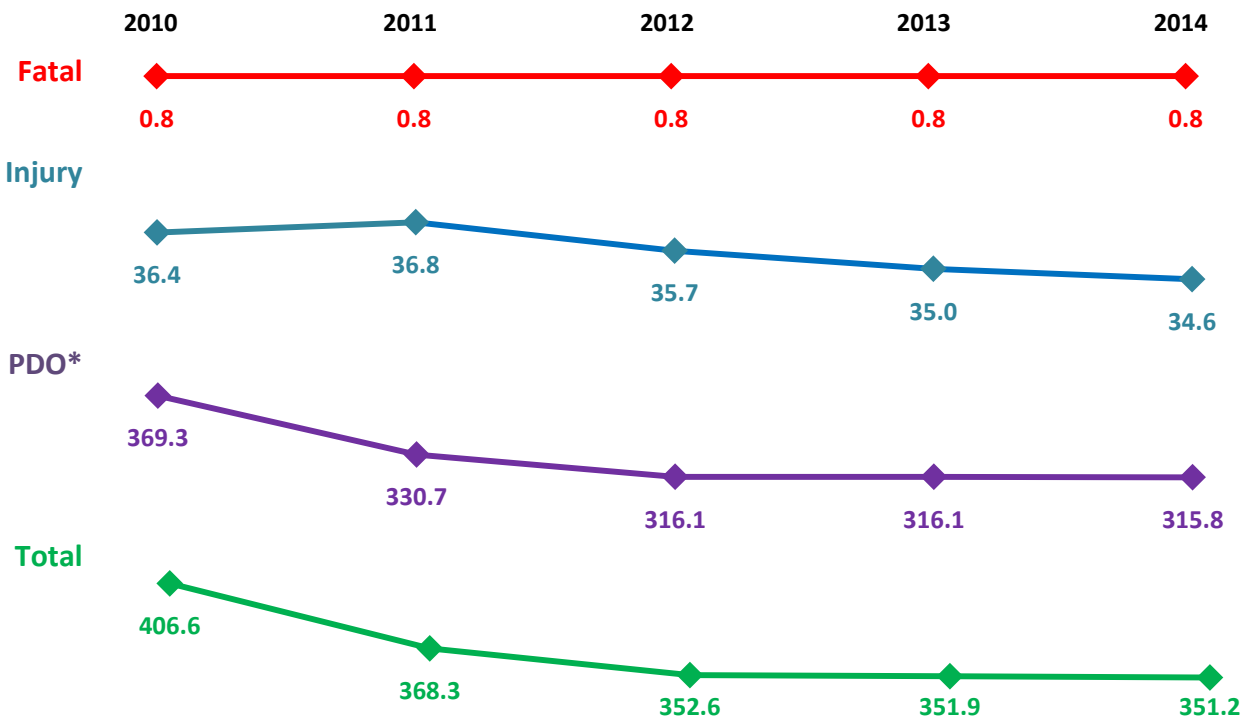
Total Number of Casualties

Fatalities	369
Major Injuries	3,016
Minor Injuries	15,729
Total	19,114

Month of Collision Occurrence

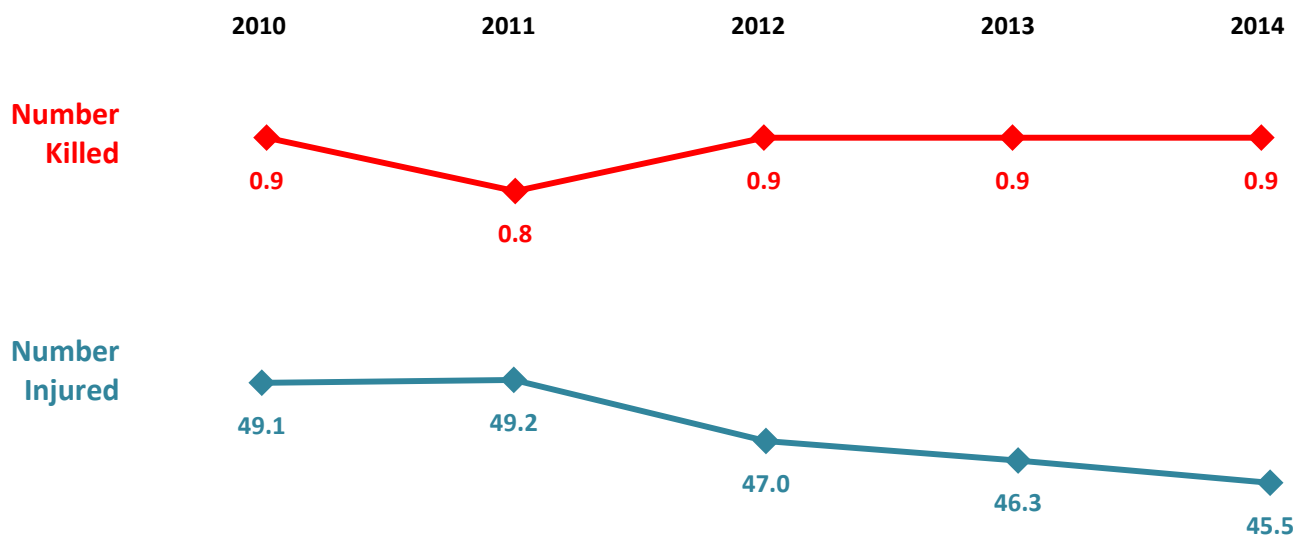


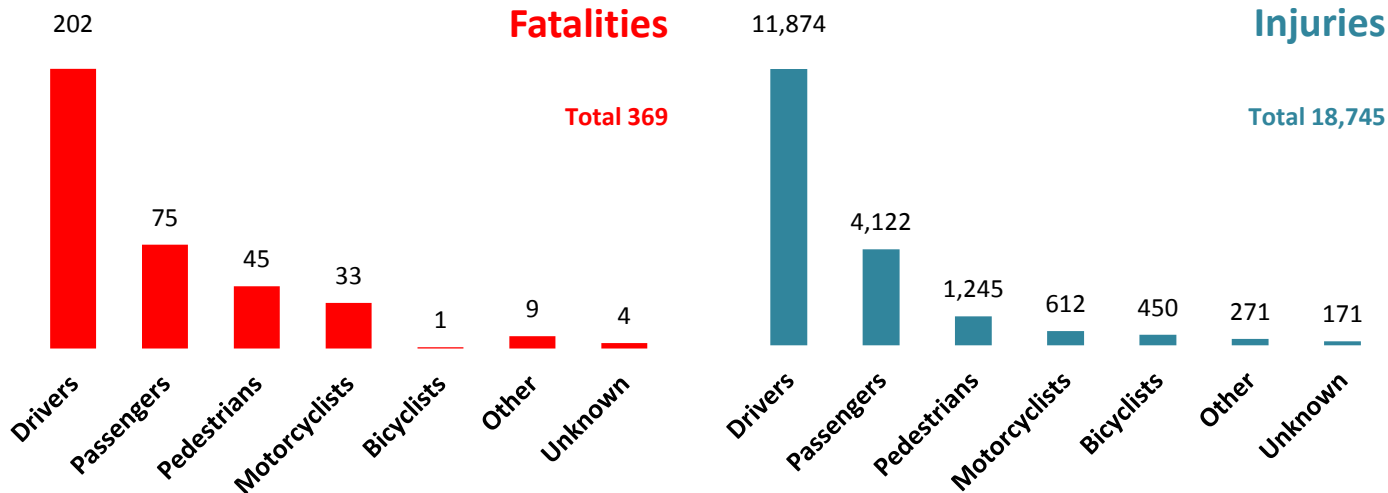
Collision Rates per 10,000 Population



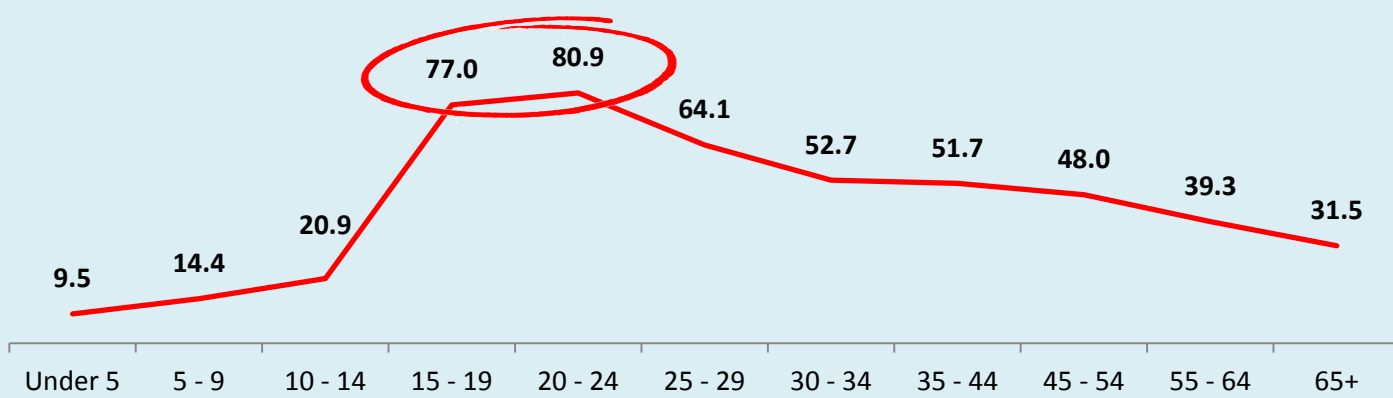
*On January 1, 2011, the reporting threshold for property damage only collisions increased from \$1000 to \$2000.

Casualty Rates per 10,000 Population





Casualty Rate per 10,000 Population by Age



■ The Alberta seat belt wearing rate was 95.1% in 2011* ■

■ Seatbelt users had a much lower injury rate (7.0%) than those not using seatbelts (30.6%) ■

Did Not Use a Seatbelt



Used a Seatbelt



■ Fatal Injury ■ Major Injury ■ Minor Injury

■ **85.6% of total collisions involved at least one driver who committed a driving error** ■

Speeding Increases Collision Severity

1 in 4 drivers in fatal collisions (22.8%) and 1 in 10 drivers in injury crashes (9.3%) were driving at an unsafe speed

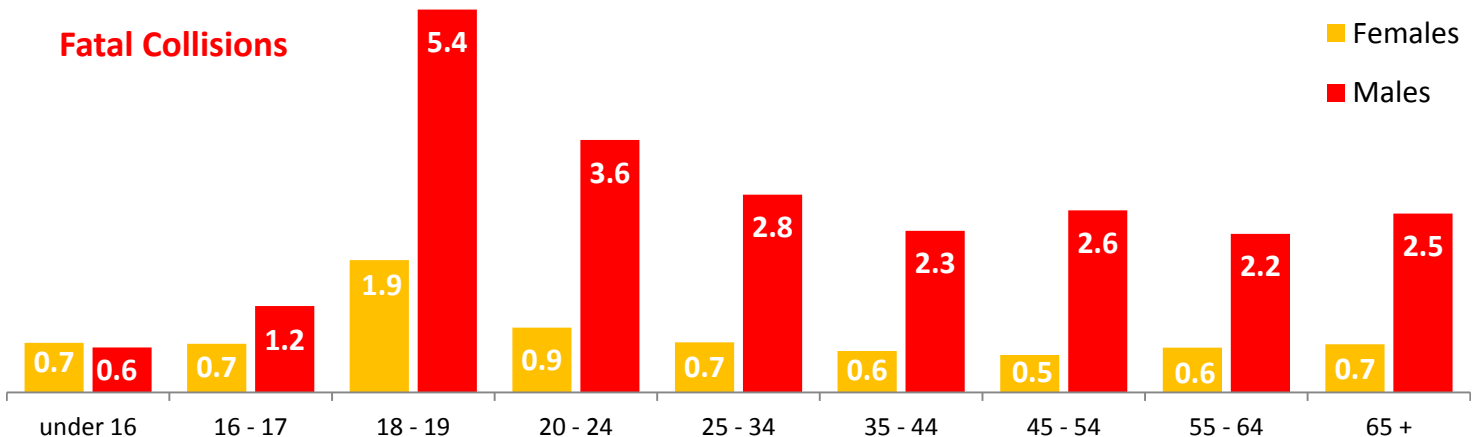


48% of crashes on rural highways involved an animal

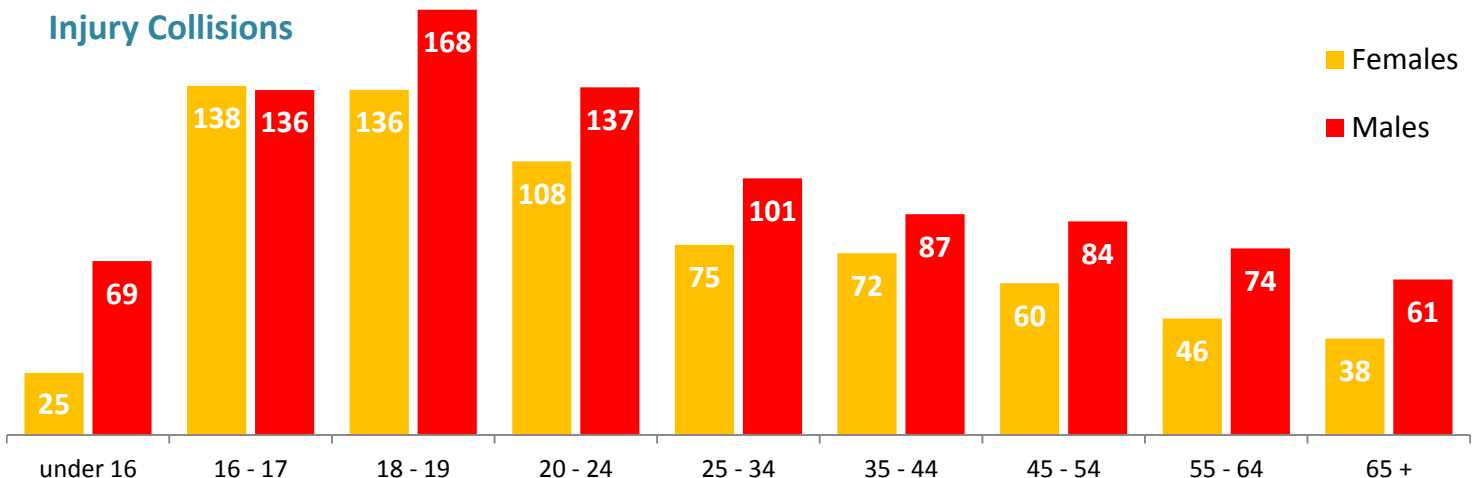
Of these crashes, 4% resulted in human casualties. The crash factors that lead to deaths and injuries include things like speeding, 'tailgating' and drinking and driving.

Involvement Rates per 10,000 Licensed Drivers

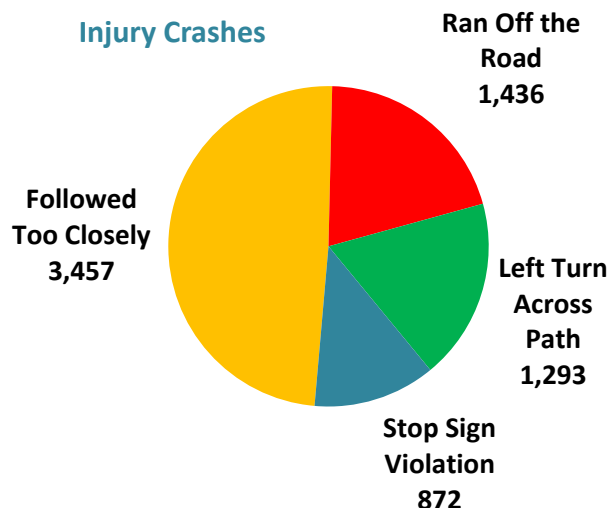
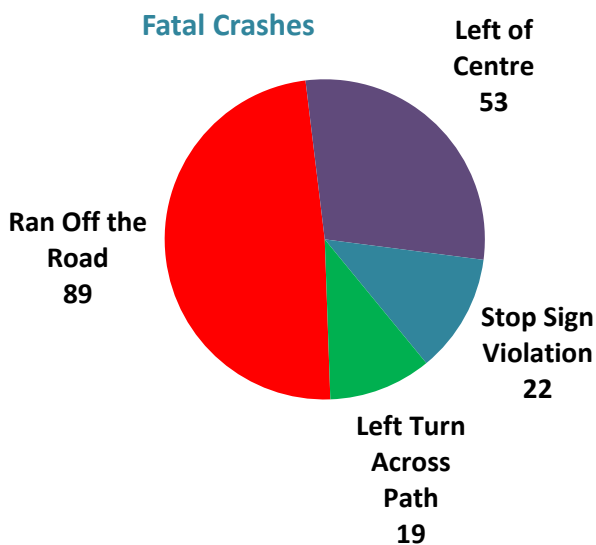
Fatal Collisions



Injury Collisions



Most Common Driver Errors Include...

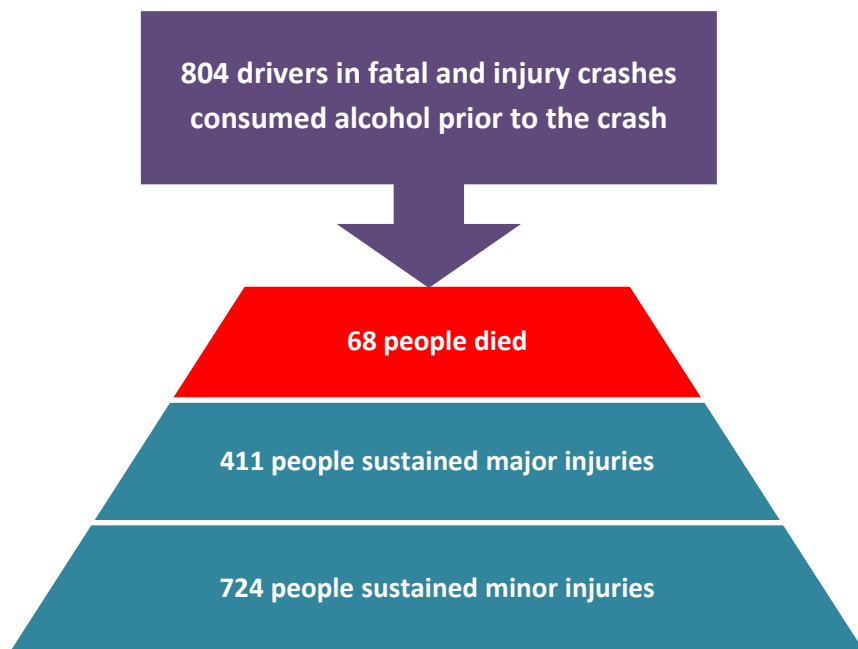
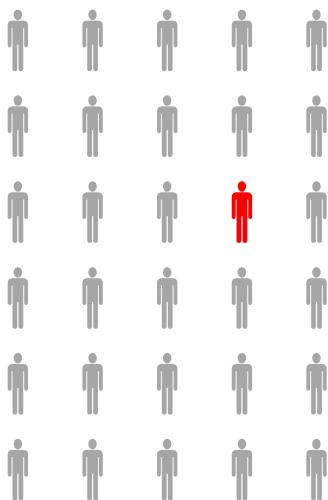


Drinking Drivers...

1 in 6 Drivers in Fatal Crashes Drank (15.9%)



1 in 30 Drivers in Injury Crashes Drank (3.3%)

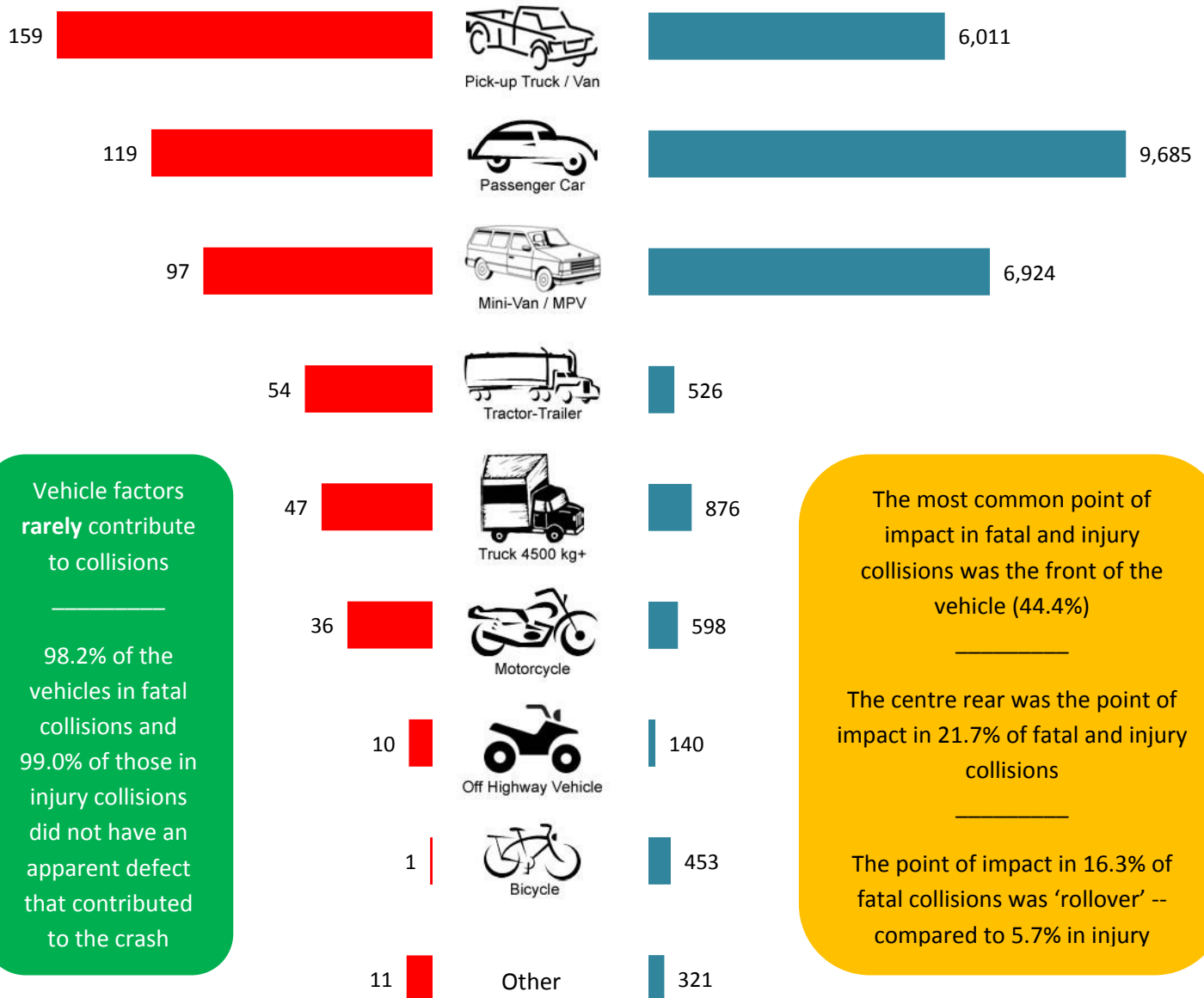


Involvement Rates per 1,000 Licensed Drivers Show...

- Males aged 20 - 21 were most likely to have consumed alcohol before the crash ■
- Four times more males than females consumed alcohol before the crash ■

Fatal Collisions

Injury Collisions



Vehicle factors rarely contribute to collisions

98.2% of the vehicles in fatal collisions and 99.0% of those in injury collisions did not have an apparent defect that contributed to the crash

The most common point of impact in fatal and injury collisions was the front of the vehicle (44.4%)

The centre rear was the point of impact in 21.7% of fatal and injury collisions

The point of impact in 16.3% of fatal collisions was 'rollover' -- compared to 5.7% in injury

Visit www.transportation.alberta.ca/statistics for more information on motor vehicle collisions in Alberta

*Visit www.transportation.alberta.ca/Content/docType48/Production/AlbertaSeatBeltUse2006-2011.pdf for more information on seatbelt wearing rates in Alberta.

Note: The information presented in this fact sheet is based on those cases where the respective information was specified on the Alberta Collision Report Form. For more information on the categories presented in this report and motor vehicle collisions in Alberta, please refer to the annual Alberta Traffic Collision Statistics report, available at the above website.