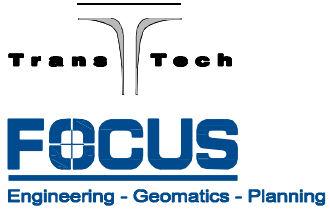


OPEN HOUSE #3: JUNE 2009

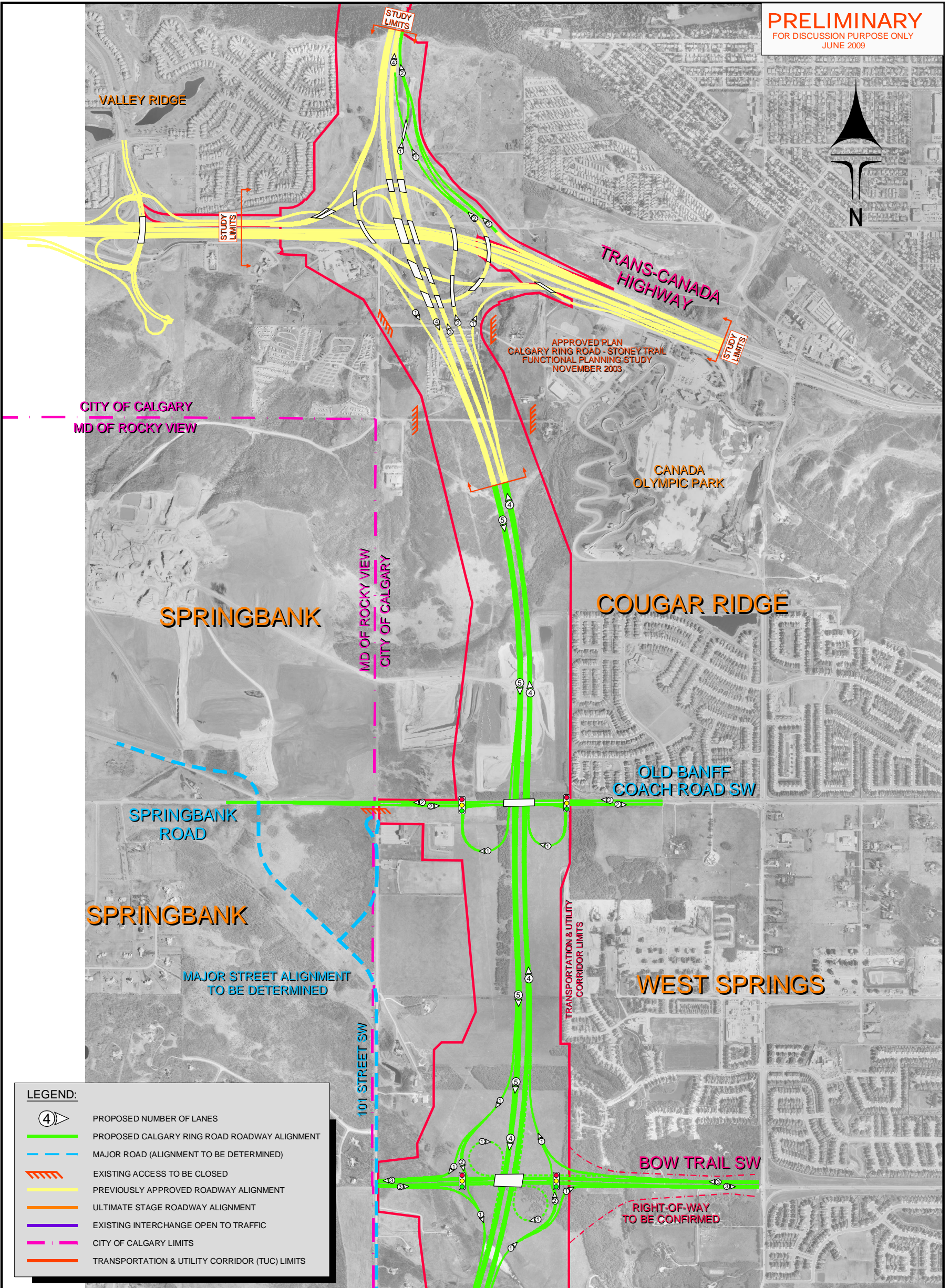
WWW.WESTCRR.CA



WEST CALGARY RING ROAD TRANS-CANADA TO BOW TRAIL SW RECOMMENDED LONG RANGE PLAN

Government of Alberta

PRELIMINARY
FOR DISCUSSION PURPOSE ONLY
JUNE 2009



LEGEND:

- PROPOSED NUMBER OF LANES
- PROPOSED CALGARY RING ROAD ROADWAY ALIGNMENT
- MAJOR ROAD (ALIGNMENT TO BE DETERMINED)
- EXISTING ACCESS TO BE CLOSED
- PREVIOUSLY APPROVED ROADWAY ALIGNMENT
- ULTIMATE STAGE ROADWAY ALIGNMENT
- EXISTING INTERCHANGE OPEN TO TRAFFIC
- CITY OF CALGARY LIMITS
- TRANSPORTATION & UTILITY CORRIDOR (TUC) LIMITS