

**CALGARY SOUTHWEST RING ROAD PROJECT
REPORT ON
OPEN HOUSE SERIES #1
(February 22, 23 and 24, and March 1 and 3, 2011)**

Submitted to:

Alberta Transportation & The City of Calgary
Calgary, Alberta

Submitted by:

AMEC Earth & Environmental
Calgary, Alberta

March 2011

EXECUTIVE SUMMARY

Introduction

Alberta Transportation and The City of Calgary signed a Memorandum of Understanding in late 2009 outlining key considerations for a Functional Planning Study (the Study) for the Southwest Ring Road alignment. During the course of the Study, five potential routes are being considered, all of which would provide a link to the Calgary transportation network. Each of these routes is being evaluated within environmental, social and technical contexts.

As part of the comprehensive public engagement process for the Study, five open houses were held for potentially affected communities and interested members of the public to view information about the Study and the route options being considered. Feedback was sought from stakeholders and the public on key issues of concern to them related to the technical, environmental and social aspects with the development of each of the potential routes.

The purpose of the Series #1 open houses was to gather stakeholder and public input that will feed directly into the decision-making process. The specific objectives of the open houses were to:

- improve stakeholder and public understanding of the Study;
- identify stakeholder and public concerns related to the Study; and
- receive comments on route selection criteria and process.

Methodology

Five open houses, displaying the same study information, were held:

- February 22 – Bethany Chapel (Calgary);
- February 23 – Acadia Recreation Complex (Calgary);
- February 24 – Fish Creek Recreation Complex (Calgary);
- March 1 – Foothills Community Centennial Centre (Okotoks); and
- March 3 – Elbow Springs Golf Course Clubhouse (Highway 8).

Invitations were sent to community associations representing communities adjacent to each potential route, January 29, 2011 community workshop participants, and individuals who provided their e-mail addresses and wished to be contacted about the Study.

Participants attending an open house were given a map showing the five potential routes, a preliminary route evaluation matrix, an open house evaluation form and frequently asked questions (FAQs). They also viewed display boards providing information about the Study. Project staff was available to answer questions.

Participation

Approximately 3175 people attended the five open houses, with the largest attendance at the North (February 22) open house. There was representation from 115 Calgary communities as well as 22 communities located outside Calgary. The largest representation was from the community of Lakeview (1205), followed by Oakridge (135), Elbow Valley (104), Glamorgan (85) and Woodbine (65).

Feedback

Over 1700 open house evaluation forms and other comments had been collected by the project team as of March 18, 2011, and about 80% of these were received at the open houses. The largest number of forms were received from Lakeview (36%), followed by Oakridge (5%), Elbow Valley (3%) and Glamorgan (3%).

The open house evaluation forms asked for input on the following:

- location and time of the open house, and suggestions for improvement;
- what community they live in;
- general comments and/or suggestions on the potential routing alternatives;
- issues/topics that should be included in the environmental assessment;
- general comments/concerns about the Project and/or its effect on the city, community or environment; and
- contact information (if they wished to be contacted).

Most people were happy with the time and location of the open house. Many people provided suggestions for improvement, the most common of which were:

- hold open houses in more potentially directly affected communities (18%) – most comments from the North and Middle open houses;
- better parking and access (16%) – most comments from the North and South open houses; and
- have longer hours and/or hold open houses on weekends (10%).

The evaluation form also asked for input in three areas: potential route, environmental issues and general comments. The most common comments included the following (not necessarily in order of frequency):

- there are two separate issues – requirement for a bypass (ring) road, and requirement for another commuter route;

- need to look at the bigger picture; better busing/LRT for more efficient movement of people in the city;
- just build the road, it's been in the planning stages too long;
- we don't need a southwest ring road within the city limits; take it out to Highway 22 and build a connector down 37 Street;
- need roads to get traffic out of the south;
- building the ring road will just move the congestion to different areas of the city, so need to evaluate effects on other city roads;
- none of the options is perfect, but Route #4 is the best;
- concerns about the number of homes that would be expropriated on either 37 Street or 14 Street;
- build a bridge over the Weaselhead similar to the one on Stony Trail northwest;
- don't go through the Weaselhead or destroy Glenmore Park, Calgary needs all its parks;
- concerns about the wildlife in the environmental areas along Route #4;
- concerns about potential effects on drinking water, both spills and daily pollution;
- concerns about increased noise pollution in the parks and residential areas;
- go back to negotiations with the Tsuu T'ina; and
- don't go back to negotiations with the Tsuu T'ina.

Next Steps

To determine the best way to connect Glenmore Trail to Highway 22X, input from the public and stakeholder groups will be taken into consideration in route selection, along with effects on the environment, current and future transportation needs, capital costs, and future growth plans and goals for The City of Calgary.

Public consultation is an important component of the Study. Additional meetings and open houses will be held throughout the Study to receive timely input from the public and stakeholder groups. The next series of consultation will show how input received to date has been used in the Study, provide further information on the potential route(s) and continue to collect input from those with an interest in the Project.

TABLE OF CONTENTS

	PAGE
1.0 INTRODUCTION.....	1
2.0 PURPOSE AND OBJECTIVES OF THE OPEN HOUSES.....	1
3.0 METHODOLOGY.....	2
3.1 Schedule	2
3.2 Notification.....	2
3.2.1 Newspaper Advertisements	2
3.2.2 Street Signs	2
3.2.3 E-mail Invitations.....	3
3.3 Government Notification	3
3.4 Open House Format	3
4.0 PUBLIC AND STAKEHOLDER PARTICIPATION.....	4
5.0 PUBLIC AND STAKEHOLDER FEEDBACK.....	5
5.1 Open House Location, Time and Suggestions for Improvement.....	6
5.2 Communities Represented	6
5.3 Project Comments	6
5.3.1 Ring Road Completion.....	6
5.3.2 Route Preference	7
5.3.3 Specific Comments	8
6.0 CONCLUSIONS FROM THE OPEN HOUSE.....	9
7.0 NEXT STEPS.....	9
7.1 January 29, 2011 Community Workshop and Open House Follow-Up.....	9
7.2 The Study	9
7.3 Consultation	9

LIST OF TABLES

Table 1	Open House Dates and Locations	2
Table 2	Newspaper Advertisements	2
Table 3	Open House Participants	4
Table 4	Evaluation Forms Received	5

LIST OF APPENDICES

Appendix A	Newspaper Advertisement
Appendix B	Street Sign Locations
Appendix C	E-mail Invitation
Appendix D	Open House Handouts
Appendix E	Participant Communities
Appendix F	Communities Represented on the Evaluation Form

1.0 INTRODUCTION

Alberta Transportation and The City of Calgary signed a Memorandum of Understanding in late 2009 outlining key considerations for a Functional Planning Study (the Study) for the Southwest Ring Road alignment. During the course of the Study, five potential routes are being considered, all of which would provide a link to the Calgary transportation network. Each of these routes is being evaluated within environmental, social and technical contexts.

As part of the comprehensive public engagement process for the Study, five open houses were held for potentially affected communities and interested members of the public to view information about the Study and the route options being considered. Feedback was sought from stakeholders and the public on key issues of concern to them related to the technical, environmental and social aspects with the development of each of the potential routes.

Benefits of holding open houses at five locations included:

- multiple locations provided flexibility of dates and venues for attendees;
- provided project information in an informal setting that allowed for one-to-one exchanges between concerned/interested persons and the project professionals;
- encouraged participants to peruse information at their own pace and according to their own needs; and
- provided an opportunity for participants to engage with one another while viewing the displayed information.

2.0 PURPOSE AND OBJECTIVES OF THE OPEN HOUSES

The purpose of the Series #1 open houses was to gather stakeholder and public input that will feed into the route selection process. The specific objectives of the open houses were to:

- improve stakeholder and public understanding of the Study;
- identify stakeholder and public concerns related to the Study; and
- receive comments on the route selection criteria and process.

3.0 METHODOLOGY

3.1 Schedule

Five open houses were held weekdays from 4:00–8:00 pm. Table 1 shows the dates and locations.

**Table 1
 Open House Dates and Locations**

Date	Location	Address
February 22	Bethany Chapel, Calgary	3333 Richardson Way SW
February 23	Acadia Recreation Complex, Calgary	240 – 90 Avenue SE
February 24	Fish Creek Recreation Complex, Calgary	100, 333 Shawville Blvd. SW
March 1	Foothills Community Centennial Centre, Okotoks	4, 204 Community Way
March 3	Elbow Springs Golf Course Clubhouse, Highway 8	240086 Lott Creek Blvd.

3.2 Notification

3.2.1 Newspaper Advertisements

Advertisements for the open houses were placed in four newspapers in advance of the open houses. Table 2 provides details on the ads placed.

**Table 2
 Newspaper Advertisements**

Paper	Dates
The Calgary Herald	February 12, 17, 19
The Calgary Sun	February 12, 17, 19
Rocky View Weekly	February 15, 22, March 1
Okotoks Western Wheel	February 16, 23

A copy of the ad is provided in Appendix A.

3.2.2 Street Signs

Approximately two weeks before the open houses, 38 road-side signs were placed in south Calgary, displaying the date and location of the closest open house to each sign location. Street signs were not placed along Highway 8 nor in Okotoks. A list of sign locations is provided in Appendix B.

3.2.3 E-mail Invitations

Open house invitations were e-mailed to:

- 39 community associations representing communities adjacent to a potential route;
- 49 participants from the January 29, 2011 community workshop; and
- 57 individuals who had provided their e-mail addresses and wished to be contacted.

The e-mail provided an update on the community workshop held on January 29, 2011, as well as information on the open house locations and dates. A copy of the open house advertisement was attached to the e-mail. Appendix C contains a copy of this e-mail.

3.3 Government Notification

Members of the Legislative Assembly (MLAs), City Aldermen/Councillors, the County of Rocky View and the Municipal District of Foothills were provided information about the times/locations for the open houses and the website, as well as the information to be presented at the open houses.

3.4 Open House Format

The open house format consisted of an informal setting with two sets of 18 display boards arranged along the periphery of the rooms at the three Calgary open house venues, and one set of display boards at the Okotoks and Highway 8 open house venues.

Participants were greeted at the door and provided with a handout package that included (see Appendix D):

- a map with all five potential routes illustrated;
- a preliminary route evaluation matrix;
- an open house evaluation form; and
- frequently asked questions (FAQs).

As they entered the room, participants were asked what community they resided in. This information was presented on a wall to illustrate for attendees which communities were represented and in what numbers.

Participants then viewed the display boards arranged around the room. Boards consisted of the following.

- background information on the Study (five display boards);
- each route option, as well as pros and cons for each route (five display boards);
- information on a Highway 22X/Highway 22 route (not part of the route evaluation);

- a map with all five routes;
- “Map 7” from the Calgary Transportation Plan (2009);
- a preliminary route evaluation matrix;
- a summary of the January 29, 2011 community workshop (two display boards);
- options for placing the ring road (two display boards); and
- information related to the twinning of Highway 8 (March 3 open house in Rocky View County only).

Project staff was available to explain the information presented and answer questions.

4.0 PUBLIC AND STAKEHOLDER PARTICIPATION

Approximately 3175 people attended the five open houses, with the largest attendance at the North (February 22) open house. All other open houses, except Okotoks, had large numbers of attendees. Team members tracked people coming and going, but because of venue layout and number of participants, exact attendance numbers could not be confirmed. Table 3 shows the estimated number of participants at each open house.

**Table 3
 Open House Participants**

Date	Location	Participants*
February 22	North (Bethany Chapel)	1700
February 23	Middle (Acadia Recreation Complex)	575
February 24	South (Fish Creek Recreation Complex)	450
March 1	Okotoks	45
March 3	West (Highway 8)	405
Total Open House Participation		3175

* Approximate number of participants in attendance.

Of the 3175 open house attendees, 2776 identified their home communities. In total, there was representation from 115 Calgary communities as well as 22 communities located outside Calgary. The largest representation was from the community of Lakeview (1205), followed by Oakridge (135), Elbow Valley (104), Glamorgan (85) and Woodbine (65). A breakdown of participation from all communities is provided in Appendix F.

5.0 PUBLIC AND STAKEHOLDER FEEDBACK

Attendees at the open houses were given an evaluation form as part of their handout package. Comments were requested on the following (see Appendix D for the form):

- location and time of the open house, and suggestions for improvement;
- what community they live in;
- general comments and/or suggestions on the potential routing alternatives;
- issues/topics that should be included in the environmental assessment;
- general comments/concerns about the Project and/or its effect on the city, community or environment; and
- contact information (if they wished to be contacted).

Because of the very large number of attendees at the first open house, there was a shortage of available evaluation forms for open house attendees to complete (no forms were available after about 7:15 pm). Attendees that didn't have the opportunity to fill out an evaluation form at the open house were told they could print off a form on the project website and send it in after the open house, if they were interested in providing feedback. Sufficient numbers of evaluation forms were available at all other open houses.

As of March 18, 2011, over 1700 evaluation forms and other comments had been collected by the project team. Over 80% of evaluation forms (1406) were received at the open houses. This indicates that 44% of open house attendees completed the evaluation forms at the open houses. The remainder of the evaluation forms and comments were sent in after the open houses by e-mail, postal mail or fax. Table 4 provides a breakdown of the forms received.

**Table 4
 Evaluation Forms Received**

Feedback Methods		No. Received
Evaluation forms completed at the open houses	February 22 (North)	620
	February 23 (Middle)	346
	February 24 (South)	236
	March 1 (Okotoks)	17
	March 3 (West)	187
Evaluation forms sent in after the open houses	Fax	95
	E-mail	95
	Postal Mail	63
Total Evaluation Forms		1659
General comments sent in after the open houses	Fax	2
	E-mail	33
	Postal Mail	15
Total General Comments		50
Total Feedback Received		1709

5.1 Open House Location, Time and Suggestions for Improvement

Responses to the question “were the time and location of the open house good for you” were as follows:

- yes – 82%;
- somewhat – 13%;
- no – 4%; and
- don't know/no opinion – 2%.

Most common suggestions for improvement related to:

- hold open houses in more potentially directly affected communities (18%) – most comments from the North and Middle open houses;
- better parking and access (16%) – most comments from the North and South open houses; and
- have longer hours and/or hold open houses on weekends (10%).

5.2 Communities Represented

Those who filled out an evaluation form were asked to indicate which community they were from. From the 1634 people who identified their community 120 different Calgary communities were represented, as well as 16 areas/communities outside Calgary. The largest number were from Lakeview (36%), followed by Oakridge (5%), Elbow Valley (3%) and Glamorgan (3%). The detailed breakdown of participants by community is provided in Appendix F.

5.3 Project Comments

5.3.1 Ring Road Completion

Although the evaluation form did not ask respondents if they were in favor of completing the ring road or if they had a preferred route option, many people specified a preference anyways.

Of the 1659 evaluation forms received, 54% of respondents specified a preference for either going ahead with a ring road or not completing this portion of the ring road; the remaining 46% did not provide a route preference or state that this portion of the ring road should not be completed. Of these 896 respondents, about 47% were in favor and 53% were against completing this portion of the ring road.

Of those who were not in favor of completing the ring road, the largest representation was as follows:

- Lakeview – 27%;

- Glamorgan – 7%;
- Oakridge – 4%;
- all other communities – 61%; and
- community not specified – 1%.

Breakdown for those in favor of completing the ring road was as follows:

- Elbow Valley – 10%;
- Evergreen – 8%;
- Woodbine – 5%;
- Woodlands – 4%;
- Oakridge – 4%
- Lakeview – 2%;
- Glamorgan – 1%;
- all other communities – 65%; and
- community not specified – 1%.

5.3.2 Route Preference

On the evaluation forms, there were 1670 instances of route preference expressed:

- Route #1 – <1%;
- Route #2 – <1%;
- Route #3 – <1%;
- Route #4 – 37%;
- Route #5 – 2%;
- go through Tsuu T'ina Nation lands – 35%;
- put the ring road further west/circle the city, don't go through it – 11%;
- alternate route proposed – 3%; and
- no ring road or don't like any of the options – 10%.

Many people expressed a preference for more than one option, or a combination of options, so the percentages above include multiple preferences expressed by individual respondents in some cases. In addition, many people gave suggestions for technical improvements to their preferred route. About 15% of respondents did not indicate a preference for any route option

(and therefore are not included in the percentages noted above). In addition, 7% of respondents specifically noted that they were not in favor of Route #4.

5.3.3 Specific Comments

Participants were asked to separate their project comments into three specific areas:

- potential route;
- environmental issues; and
- general comments.

The most common comments included the following (not necessarily in order of frequency):

- there are two separate issues – requirement for a bypass (ring) road, and requirement for another commuter route;
- need to look at the bigger picture; better busing/LRT for more efficient movement of people in the city;
- just build the road, it's been in the planning stages too long;
- we don't need a southwest ring road within the city limits; take it out to Highway 22 and build a connector down 37 Street;
- need roads to get traffic out of the south;
- building the ring road will just move the congestion to different areas of the city, so need to evaluate effects on other city roads;
- none of the options is perfect, but Route #4 is the best;
- concerns about the number of homes that would be expropriated on either 37 Street or 14 Street;
- build a bridge over the Weaselhead similar to the one on Stony Trail northwest;
- don't go through the Weaselhead or destroy Glenmore Park, Calgary needs all its parks;
- concerns about the wildlife in the environmental areas along Route #4;
- concerns about potential effects on drinking water, both spills and daily pollution;
- concerns about increased noise pollution in the parks and residential areas;
- go back to negotiations with the Tsuu T'ina; and
- don't go back to negotiations with the Tsuu T'ina.

6.0 CONCLUSIONS FROM THE OPEN HOUSE

The open houses were very well attended, an indication that many people in Calgary and the surrounding communities are interested in this Study. Participants provided their thoughts, suggestions and ideas related to the Study. Many people are concerned about potential effects on the environment and Calgary parks, but there are many others for whom issues with the current road system in Calgary and their ability to travel from one area of the city to another are also important.

The three objectives of the open houses were met:

- public understanding of the Project was improved;
- a large volume of comments on route selection and proposed criteria were received; and
- public concerns were identified and will be considered during the Study.

7.0 NEXT STEPS

7.1 January 29, 2011 Community Workshop and Open House Follow-Up

The report from the community workshop has already been posted to the project website and notification of the posting provided to all participants and communities invited. Answers to the questions raised at the workshop will be posted when available.

7.2 The Study

Comments received from the open houses will be reviewed by the project team to assist them in determining which potential route will be studied in further detail.

To determine the best way to connect Glenmore Trail SE to Highway 22X, input from the public and stakeholder groups will be taken into consideration in route selection, along with effects on the environment, current and future transportation needs, capital costs, and future growth plans and goals for The City of Calgary.

7.3 Consultation

A workshop for communities; a workshop for environmental non-government organizations (ENGOS) (scheduled for April); meetings with community organizations and interest groups; and open houses were all part of Series #1 of the consultation process for the Study.

Public consultation is an important component of the Study. Additional meetings and open houses will be held throughout the Study to receive timely input from the public and stakeholder groups. The next series of consultation will:

- show how input received to date has been used in the Study;

- provide further information on the potential route(s); and
- collect input from those with an interest in the Project.

It is anticipated that this next series of consultation will be later in 2011.

Appendix A

Newspaper Advertisement

Appendix A – Newspaper Advertisement

Calgary Southwest Ring Road Public Open Houses

The Functional Planning Study for the southwest portion of the Calgary Ring Road is underway. The study area is bounded by Glenmore Trail/Highway 8, Highway 22X, the western city limits and Deerfoot Trail. The purpose of the study is to review possible route options and recommend the best way to connect Highway 22X to Glenmore Trail near Sarcee Trail.

Stakeholders and members of the public are invited to attend one of the five open houses to view information about the study area and the route options being considered. Members of the project team will be available to answer questions, and receive input and comments. This information will be considered by the project team as they continue with the study.

Open Houses will be held from 4:00-8:00 pm at the following locations:

- Tues. Feb. 22 – **Bethany Chapel** (3333 Richardson Way SW)
- Wed. Feb. 23 – **Acadia Recreation Complex** (240 – 90 Avenue SE)
- Thurs. Feb. 24 – **Fish Creek Recreation Complex** (100, 333 Shawville Blvd SE)
- Tues. Mar. 1 – **Foothills Community Centennial Centre** (4, 204 Community Way, Okotoks)
- Thurs. Mar. 3 – **Elbow Springs Golf Course Clubhouse** (240086 Lott Creek Boulevard, west of Calgary near Highway 8)

For additional information regarding the Open House, please contact:

Website: www.cswrr.info

E-mail: consultation.calgary@amec.com

Phone: 403-387-1991



Appendix B
Street Sign Locations

Appendix B – Street Sign Locations

North signs (Feb 22): 8 (for OH near Mount Royal University) – Bethany Chapel

Middle signs (Feb 23): 17 (for OH near 90th Ave & Macleod Trail) – Acadia Recreation Complex

South signs (Feb 24): 13 (for OH near Shawnessy Blvd & Macleod Trail) – Fish Creek Recreation Complex

Total signs: 38

Community Association	Open House	Suggested by AMEC (41 locations)
Acadia Community Association	Middle	On North Side Heritage Dr, West of Blackfoot Trail
Auburn Bay Community Association	South	On North Side Seton Blvd SE, 350 meters East of Deerfoot Trail SE
Bonavista Downs Community Association		<i>See Lake Bonavista</i>
Braeside Community Association	Middle	On East Side 24 ST, South of Southland Dr
Calgary Evergreen Community Association		<i>See Shawnee/Evergreen, Millrise, Shawnessy</i>
Canyon Meadows Community Association	Middle	On South Side of Canterbury Rd SW; West of Elbow Dr SW
Cedarbrae Community League Association		<i>See Braeside</i>
Chaparral Community Association	South	On West Side Chaparral Blvd; South of Hwy 22X SE
Chinook Park/Kelvin Grove/Eagle Ridge Community Association	Middle	On North Side Heritage Dr, East of Elbow Dr
Discovery Ridge Community Association	North	On East Side DISCOVERY RIDGE BLVD SW; South of GLENMORE TRAIL
Douglasdale Estates Community Association	South South	1. On East Side DOUGLASDALE BLVD; 350 Meters South Of DEERFOOT TRAIL SE 2. On East Side 24 ST; 350 Meters North Of DEERFOOT TRAIL SE
Elbow Valley Community Association		<i>Not required</i>
Glamorgan Community Association of Calgary	North	On West of 37 ST ; South of 46 Ave
Haysboro Community Association		<i>See Kingsland</i>
Kingsland Community Association	Middle	On North Side Heritage Dr, West of Macleod Trail
Lake Bonavista Community Association	Middle Middle	1. On East Side Bonaventure Dr, South of Anderson RD 2. On east side of Acadia Dr, south of Anderson Rd
Lakeview Community Association	North North	1. On South Side 63 Ave, West of Crowchild Trail 2. On east side of 37 Street, south of Glenmore Trail

Community Association	Open House	Suggested by AMEC (41 locations)
Marquis de Lorne Community Association	South	<i>Too far east; changed to:</i> On West Side Cranston Blvd SE; South of 22 X SE
Mayfair Bel-Aire Community Association	Middle	On South Side Bel-Aire Dr, West of Elbow DR
McKenzie Lake Community Association	South	On North Side of McKenzie Lake Blvd, 350 meters West of Deerfoot Trail SE
McKenzie Town Community Association	South	On West Side 52 St SE, North of McKenzie Towne Blvd SE
Meadowlark Park Community Association	Middle	South Side 58 Ave SW, East of Elbow Dr SW
Mid-Sun Community Association	South	On South Side of SUN VALLEY BLVD; East of MACLEOD TRAIL
Millrise Community Association	South	On North Side SHAWNESSY BLVD; West Of MILLRISE BLVD
North Glenmore Park Community Association	North	On North Side 50 Ave, East of Crowchild Trail
Oakridge Community Association	Middle	On West Side Oakfield Dr, North of Southland Dr
Palliser/Bayview/Pumphill Community Association	Middle	On North Side 90 Ave, West of 14 ST
Pinebrook Homeowners' Association		South side of 17 Ave SW, west of 85 St
Queensland Community Association	Middle	On east side of Bow Bottom Trail, north of Canyon Meadows Drive
Rutland Park Community Association	North	North side of 33 Ave, west of Crowchild Trail
Shawnee/Evergreen Community Association	South South	1. On North Side JAMES MCKEVITT RD SW; West of Shawnee Gate 2. East side of 37 St, south of Fish Creek Park/crossing
Shawnessy Community Association	South	On North Side 162 AVE; West of C-TRAIN TRACKS
Signal Hill Community Association	North	On North Side of Richmond Road; West Of SARCEE TRAIL SW
Silverado Community Association	South	On East Side Sheriff King St , South of 22 X
Somerset/Bridlewood Community Association		<i>See Shawnessy</i>
Southwood Community Association	Middle	On West Side Sacramento Dr, South of Southland
Springbank Hill Community Association	North	<i>Too far north; instead:</i> On East Side 69 ST; North of GLENMORE TRAIL
Willow Ridge Community Association of Calgary	Middle Middle	1. On West Side ACADIA DR; North Of ANDERSON RD SE 2. On East of BONAVENTURE DR SE, North of ANDERSON RD
Woodcreek Community Association	Middle Middle	1. On East Side Woodpark Blvd, South of Anderson RD 2. On East Side 24 ST, South of Anderson RD

Appendix C

E-mail Invitations

Appendix C – E-mail Invitations

Alberta Transportation and the City of Calgary began a planning study for the Calgary Southwest Ring Road in December 2009. The planning study's objective is to determine a ring road connection along Calgary's west side between Highway 8 (Glenmore Trail) and Highway 22X.

Planning studies provide the information needed to make decisions on the design and actual construction of a road. This particular study will look at potential route options, land requirements, connection points, geotechnical issues, and potential environmental and social factors. This study is more complex than other studies for the Calgary ring road because there is not an established corridor to work with. Therefore, gathering the necessary information required to consult with the public will take time.

No decisions can be made until the necessary information is gathered.

Public consultation will occur several times before the study is completed. The public, affected landowners and other stakeholders will have an opportunity to provide input before any decisions are made.

Project Update – Open House Series 1 – February and March 2011

The first series of public open houses for the planning study will take place February 22, 23 and 24 in Calgary, March 1 in Okotoks and March 3 in Rocky View County. The open houses provide opportunities for the public to view information about the study area and the route options being considered. Members of the project team will be available to answer questions and receive input and comments. A copy of the open house advertisement is attached.

The open houses will be held from 4:00-8:00 pm at the following locations:

- Tues. Feb. 22 – **Bethany Chapel** (3333 Richardson Way SW)
- Wed. Feb. 23 – **Acadia Recreation Complex** (240 – 90 Avenue SE)
- Thurs. Feb. 24 – **Fish Creek Recreation Complex** (100, 333 Shawville Blvd SW)
- Tues. Mar. 1 – **Foothills Community Centennial Centre** (4, 204 Community Way, Okotoks)
- Thurs. Mar. 3 – **Elbow Springs Golf Course Clubhouse** (240086 Lott Creek Boulevard, west of Calgary near Highway 8)

For more information on the open houses, please contact:

Website: www.cswrr.info

E-mail: consultation.calgary@amec.com

Phone: 403-387-1991

Project Update – January 29, 2011 Community Workshop

Public consultation activities began January 29, with a workshop that included representatives from communities in south Calgary. The workshop's purpose was to provide information on what is included in a functional planning study, provide the communities with an update on the work done to date and collect feedback from the communities with regards to the various route options. This workshop is only one part of the consultation process and there will be many opportunities to provide input as the study progresses.

The workshop presentation and Frequently Asked Questions are available on the project website at www.cswrr.info.

For more information on the project, please contact:

Alex Broda, Special Planning Consultant

Alberta Transportation

Phone 403-297-7674

Email Alex.Broda@gov.ab.ca

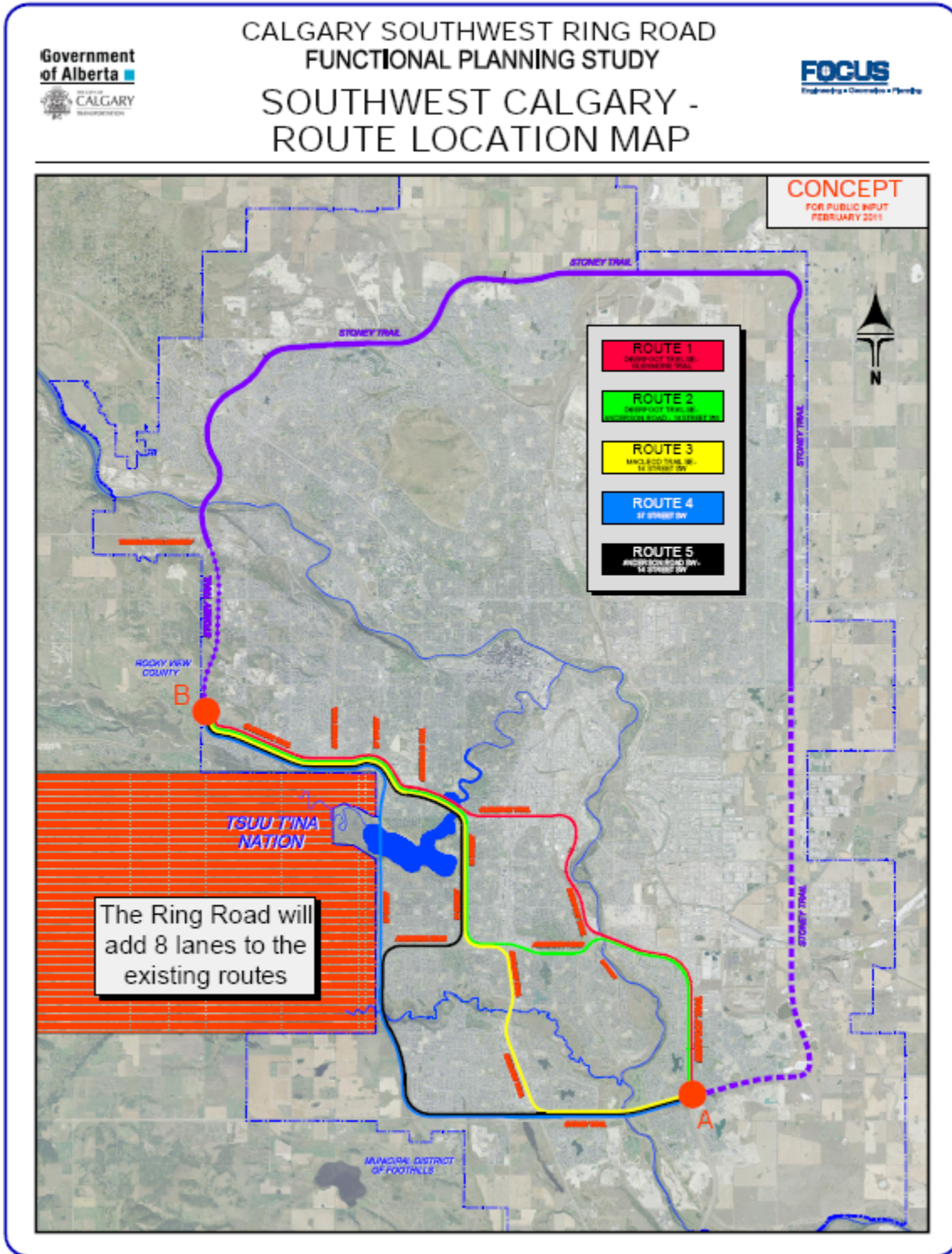
Community Associations Invited to the Open House

Acadia Community Association
Auburn Bay Community Association - Steering Committee
Bonavista Downs Community Association
Braeside Community Association
Calgary Evergreen Community Association
Calgary River Valleys
Canyon Meadows Community Association
Cedarbrae Community League Association
Chaparral Community Association
Chinook Park/Kelvin Grove/Eagle Ridge Community Association
Discovery Ridge Community Association
Douglasdale Estates Community Association
Elbow Valley Community Association
Haysboro Community Association
Kingsland Community Association
Lake Bonavista Community Association
Lakeview Community Association
Marquis de Lorne Community Association
Mayfair Bel-Aire Community Association
McKenzie Lake Community Association
McKenzie Town Community Association
Meadowlark Park Community Association
Mid-Sun Community Association
Millrise Community Association
New Brighton Community Association
North Glenmore Park Community Association
Oakridge Community Association
Palliser/Bayview/Pumphill Community Association
Pinebrook Homeowners' Association
Queensland Community Association
Rutland Park Community Association
Shawnee/Evergreen Community Association
Shawnessy Community Association
Signal Hill Community Association
Silverado Community Association
Somerset/Bridlewood Community Association
Southwood Community Association
Springbank Hill Community Association
Willow Ridge Community Association of Calgary
Woodcreek Community Association

Appendix D

Open House Handouts

WWW.CSWRR.INFO



WWW.CSWRR.INFO

CALGARY SOUTHWEST RING ROAD
 FUNCTIONAL PLANNING STUDY



PRELIMINARY EVALUATION MATRIX

ROUTE OPTION	ROUTE 1	ROUTE 2	ROUTE 3	ROUTE 4	ROUTE 5
Main Feature Freeway Shares Right-of-Way with Deerfoot Trail and Glenmore Trail	Freeway Shares Right-of-Way with Deerfoot Trail, Anderson Road, 14 Street SW and Glenmore Trail	Freeway Shares Right-of-Way with Deerfoot Trail, Anderson Road, 14 Street SW and Glenmore Trail	Freeway Shares Right-of-Way with Macleod Trail SE, 14 Street SW and Glenmore Trail	Freeway Built Along the 37 Street SW Corridor	Freeway Shares Right-of-Way with 37 Street SW, Anderson Road, 14 Street SW and Glenmore Trail
Supports the planned growth and the planned transportation network in southwest Calgary					
Supports the function of the Calgary Ring Road					
Potential environmental impact					
Proximity to drinking water intake					
Corridor length* (kilometres)	28 km	29 km	29 km	30 km	36 km
Number of residential communities where land may be required	14	24	18	6	17
Number of impacted communities**	21	29	26	11	22
RELATIVE COST	\$5\$\$\$\$	\$5\$\$\$\$	\$\$\$	\$	\$\$\$\$

* Corridor length measured from Deerfoot Trail - Highway 22X (A) to Stony Trail / Highway 8 (B)

** Additional data collection and engineering required to confirm property impacts.

Favourable
 Less Favourable
 Least Favourable

FEBRUARY 2011



Calgary Southwest Ring Road
Open House No. 1
Evaluation Form

Please take a moment and provide us with your thoughts on today's Open House. You can hand this form in at the open house, or fax, mail or e-mail it to us:

- Fax: 403-248-2188, Attn: Consultation Team
- Mail: 140 Quarry Park Blvd. SE, Calgary, AB, T2C 3G3, Attn: Consultation Team
- E-mail: consultation.calgary@amec.com

1. Were the location and time of the Open House good for you?
 Yes Somewhat No Don't know/No Opinion

Suggestions for improvement:

2. What community do you live in? _____

3. What general comments and/or suggestions do you have regarding the proposed routing for a Calgary Southwest Ring Road?

4. A detailed environmental assessment is being carried out as part of the Functional Planning Study for this project. Please provide any information on issues or topics you think should be addressed in the environmental assessment.

5. Do you have any comments or concerns in general that you would like to share regarding the development of the Calgary Southwest Ring Road and/or its effect on the City, your community or the environment?

If you wish to be contacted directly, please provide us with the following information:

Name: _____

Address: _____

Phone: _____ Fax: _____

E-mail: _____

When is the best time to contact you? _____

Personal information is protected under authority of the Freedom of Information and Protection of Privacy Act, and is used solely for the purpose of evaluating and improving the project assessment. Individuals will not be identified in any public documents or names used for any purpose other than this project.

Government of Alberta



Calgary Southwest Ring Road Functional Planning Study Frequently Asked Questions (FAQs)

Who is leading the Calgary Southwest Ring Road Functional Planning Study?

The Province of Alberta is leading and funding this study, in collaboration with The City of Calgary. They are working closely with the Municipal District of Foothills and Rocky View County.

What is a functional planning study?

A typical functional planning study identifies short-term and long-term strategies for developing and upgrading a roadway to accommodate forecasted traffic demands. The study includes a review of roadway standards, property requirements, community impacts, environment, drainage & utilities, noise and access management, and receives public input during the development of this plan. The approved functional plan forms the basis of how the road will be designed, built and upgraded.

What is the Southwest Ring Road?

A Southwest Ring Road would connect Glenmore Trail to Highway 22X and is the missing link required to complete the Calgary Ring Road. The Province initiated a functional planning study in November 2009 to look at the best way to connect Glenmore Trail/Highway 8 to Highway 22X. This study will also look at where and how to connect the Ring Road to important roads in and around Calgary between 17th Avenue SW, and Highway 22X and Macleod Trail SE.

Why is the Calgary Southwest Ring Road needed?

The Southwest Ring Road is an important part of Calgary's growth plans. It provides the ability to travel from one quadrant of the city to another without having to go through the central parts of Calgary, and enables the efficient movement of goods in and around the city. The Calgary Ring Road also serves the provincial function of connecting primary and penetrator highways through and around the city of Calgary, providing a route for bypass traffic. A completed ring road would reduce congestion on city roads and support the economic climate of the region.

What is the schedule for the Functional Planning Study?

The Functional Planning Study commenced in December 2009 with a review of prior planning information and evaluation of route alternatives for the Calgary Southwest Ring Road. Functional planning of the various route alternatives and environmental field surveys started in summer 2010. The Memorandum of Understanding between The City of Calgary and the Province of Alberta identifies the end of 2011 as the scheduled completion date.

Is the Province considering a route through the Tsuu T'ina Nation?

The Province respects the Nation members' decision, in June 2009, to decline the Province's offer to purchase and place a portion of the Southwest Ring Road on Nation lands. This study will investigate ring road route options outside the Tsuu T'ina Nation boundaries.

Will the Province re-open negotiations with the Tsuu T'ina Nation?

There are no plans to re-open negotiations with the Nation. However, the Province is willing to look at anything the Nation may bring forward.

Why does the Province need an agreement with The City of Calgary?

Unlike the rest of the Calgary Ring Road, the Province does not own land for a ring road in southwest Calgary. The Province and the City have agreed to plan the southwest portion of the ring road to meet the required roadway standards while minimizing the amount of land required.

A copy of the Memorandum of Understanding for the Calgary Southwest Ring Road Functional Planning Study can be found at <http://www.cswrr.info>.

How will the Calgary Southwest Ring Road fit with the existing Glenmore Trail/37 Street detour overpass constructed by the City this past year?

The Province and the City have worked together to ensure that this detour overpass allows the flexibility for a possible future ring road and future Glenmore Trail/37 Street interchange.

Is the overall transportation network in the southwest, including transit and all modes of transportation, being considered as part of this study?

The study considers the overall transportation network in the southwest and includes all assumptions outlined in the approved *Calgary Transportation Plan 2009 (CTP)*. The primary transit network defined in the CTP calls for links that will have frequent service; every 10 minutes, 15 hours per day, 7 days per week. This future primary transit network will complement the base transit network that provides comprehensive community coverage. The project team is identifying the transportation requirements for 30 years into the future, which includes all transit networks outlined in the CTP.

What are the impacts of the Ring Road to communities in southwest Calgary?

At this time, we don't know the exact impacts to adjacent communities. With ongoing community input, the impacts will become clearer as the Functional Planning Study progresses and a route for the Southwest Ring Road is determined. The study team will strive to balance the need for an efficient and safe ring road with the presence of existing neighborhoods and environmental features.

How will the Province manage environmental concerns related to the Calgary Southwest Ring Road?

Environmental assessment is a key component of this project. It will be completed to meet requirements under the *Canadian Environmental Assessment Act*, along with following the *Calgary Transportation Plan 2009* that outlines river crossing requirements. The assessment will identify environmentally important areas, such as potential crossings of Fish Creek and the Elbow River, and recommend methods to mitigate any potential impacts to these areas. The project team will work closely with various government regulators and stakeholders during all stages of the project.

What will be done about increased noise levels associated with the Calgary Southwest Ring Road?

The Functional Planning Study will complete a noise study and develop mitigation strategies using the current provincial noise guidelines.

A copy of these guidelines can be found at <http://www.transportation.alberta.ca/index.htm>.

What is the initial stage plan for this roadway?

Similar to other parts of the Calgary Ring Road, we expect that the initial construction will include a four- or six-lane road. As traffic volumes increase, additional lanes (to a maximum of eight) will be constructed.

Where will the interchanges be?

Connections to the main roads within and outside the city will be determined as part of this functional planning study.

How will the public be consulted during the Functional Planning Study?

Public consultation is an important component of this study. On January 29, 2011, members of the project team hosted a "working session"/workshop for community representatives to introduce the Functional Planning Study and route options under consideration, and receive feedback for consideration as the study progresses. Additional meetings with community representatives and public open houses will provide more opportunities to receive feedback from the general public.

How will public input and feedback be collected?

Public input and feedback will be collected through face-to-face meetings with community representatives, comment/feedback forms at the open houses and on-line at <http://www.cswrr.info>. In addition, concerned community members may express their issues, comments and concerns either indirectly through their community associations or directly through the contact information listed below.

What if the public does not support a ring road route in southwest Calgary?

Selection of a route will be based on many considerations, including public input. All information and input will be carefully considered before a decision is made.

Who makes the final decision?

The Ring Road will be a designated provincial highway so the final decision rests with the Province. The City of Calgary will play an important role in the decision making.

What are the next steps after the Functional Planning Study is complete?

If the Functional Planning Study is approved and funding is allocated, lands can be purchased, followed by detailed design and construction. The timelines for these have not been determined and could take three or more years to complete.

If you have any questions or comments, please contact:

Consultation Team - Calgary SW Ring Road Project
Phone: 403-387-1991
E-mail: consultation.calgary@amec.com

Appendix E

Participant Communities

Appendix E – Participant Communities

Corridor	Signs	Quadrant	Community	F22	F23	F24	M1	M3	Totals
Y	M	SE	Acadia		27			1	28
		SW	Altadore	18				2	20
		SW	Anatapi					2	2
		NW	Artist's View					1	1
		SW	Aspen Woods					3	3
Y	S	SE	Auburn Bay			1			1
Y	M	SW	Bayview	2	4				6
		SW	Bankview	4					4
		NW	Beddington					1	1
Y	M	SW	Bel-Aire		8				8
Y	S	SE	Bonavista Downs		3				3
		NW	Bowness	1			1	1	3
Y	M	SW	Braeside	7	28	3	1		39
Y	S	SW	Bridlewood		1	25			26
		SW	Britannia		1				1
		NW	Cambrian	2					2
Y	M	SW	Canyon Meadows	2	10	1			13
		NW	Capital Hill	11					11
Y	M	SW	Cedarbrae	8	32	6		1	47
		SW	Cedarwood	1					1
Y	S	SE	Chaparral		2	11			13
		SW	Christie Park Estates					2	2
Y	M	SW	Chinook Park	6	10			3	19
		SW	Coach Hill	6	1				7
		NW	Confederation Park	1				1	2
		SE	Copperfield			1			1
		SW	Cougar Ridge	1				1	2
Y	S	SE	Cranston		1	6		1	8
		NW	Crestmont					3	3
		SE	Deer Ridge		1				1
		SE	Deer Run		2				2
Y	M	SE	Diamond Cove		1				1
Y	N	SW	Discovery Ridge	33	3			24	60
Y	S	SE	Douglas Glen						0
Y	S	SE	Douglasdale	1	4				5
Y	M	SW	Eagle Ridge	4	2			1	7
		NW	Edgemont	1					1
		SW	Elbow Park	1				1	2
		SW	Elboya	6					6

Corridor	Signs	Quadrant	Community	F22	F23	F24	M1	M3	Totals
Y	S	SW	Evergreen/Evergreen Estates	1	9	29		1	40
		SE	Fairview		2				2
		SW	Garrison Green	1	3			1	5
		SW	Garrison Woods	2					2
Y	N	SW	Glamorgan	77	6			2	85
		SW	Glenbrook	31				4	35
		SW	Glendale	8	1			1	10
		NE	Greenview	1					1
		NW	Hamptons					1	1
Y	M	SW	Haysboro	3	40	3		3	49
		SW	Highland Park		1				1
		NW	Hounsfield Heights		1				1
Y	M	SW	Kelvin Grove	4	21			3	28
		NW	Kensington					2	2
		SW	Killarney	12				1	13
Y	M	SW	Kingsland	1	8				9
		SW	Knob Hill	1					1
Y	M	SE	Lake Bonavista	2	20	4			26
Y	N	SW	Lakeview	1144	25	8	2	26	1205
Y	N	SW	Lincoln Park	13	1			1	15
Y	M	SE	Maple Ridge		10				10
		SW	Marda Loop	1				2	3
Y	M	SW	Mayfair	4	2		2		8
		NE	Mayland Heights					1	1
Y	S	SE	McKenzie Lake	1	3	2			6
Y	S	SE	McKenzie Towne	1		1			2
Y	M	SW	Meadowlark Park	2	2				4
Y	S	SE	Midnapore			7		1	8
Y	S	SE	Millrise		2	10		1	13
		SW	Mission	2					2
		SW	Mount Pleasant	1					1
		SW	Mount Royal					1	1
		SE	New Brighton			1			1
Y	N	SW	North Glenmore Park	40					40
Y	M	SW	Oakridge	18	105	4	1	7	135
		SE	Ogden		1				1
Y	M	SW	Palliser	1	19	1		1	22
		SW	Parkhill	1					1
		NW	Parkdale	2					2
		SE	Parkland		8	1			9
		SW	Patterson	3	3				6

Corridor	Signs	Quadrant	Community	F22	F23	F24	M1	M3	Totals
Y			Pinebrook						0
		SW	Providence		1	2			3
Y	M	SW	Pump Hill	2	11	1		1	15
		SE	Queensland		3			1	4
		NW	Ranchlands	1					1
		SW	Richmond	8	7			4	19
		SW	Rideau Park	1					1
		SE	Riverbend		6			1	7
		SW	Rosscarrock	3					3
		SW	Rutland Park	25	1				26
		NE	Saddleridge		1				1
		SW	Scarboro		2				2
		NW	Scenic Acres					1	1
Y	S	SW	Shawnee Slopes		1	7			8
Y	S	SW	Shawnessy	1	5	17			23
Y	N	SW	Signal Hill	10				12	22
Y	S	SW	Silverado			16	1		17
Y	S	SW	Somerset		1	8			9
Y	M	SW	Southwood	1	10	3			14
Y	N	SW	Springbank Hill	10				3	13
		SW	Strathcona	5	1			1	7
Y	S	SW	Sundance		3	28			31
		NW	Sunnyside	1					1
		SW	The Slopes	1				35	36
		NW	Tuscany	1					1
		SW	Tuxedo		1				1
		SE	Walden			1			1
		SW	Wentworth	1				5	6
		SW	Westgate	5	1				6
		NW	West Hillhurst	1					1
		SW	West Springs	1				2	3
		SW	Wildwood	3	3			1	7
Y	M	SE	Willow Park		9				9
Y	M	SW	Woodbine	8	37	17	1	2	65
Y	M	SW	Woodlands	1	19	7		1	28
									0
			County of Rocky View		1			11	12
			MD of Foothills			1	14	4	19
			Wheatland County					1	1
			Bearspaw					1	1
			Cochrane					1	1
			Dewinton		1	1			2



Corridor	Signs	Quadrant	Community	F22	F23	F24	M1	M3	Totals
Y			Elbow Valley	7				97	104
			Heritage Point		1	1			2
			High River				1		1
			Lott Creek					12	12
			Madden		1				1
			Medicine Hat	1					1
			Millarville	1			1		2
			North Springbank					1	1
			Okotoks		1		17	1	19
Y			Pinebrook					8	8
			Priddis		1	2			3
			Red Deer lake		1	3			4
			Springbank					12	12
			Tsuu T'ina Nation						0
			Turner Valley				1		1
			West Meadows					7	7
			Other	1					1
TOTALS ON SHEETS				1594	564	240	43	335	2776
TOTAL ATTENDANCE				1700	575	450	43	406	3174

Appendix F

Communities Represented on the Evaluation Forms

Appendix F – Communities Represented on the Evaluation Form

Community	Open House *						Total
	F22	F23	F24	M1	M3	U	
Acadia		18					18
Altadore	4				1	2	7
Anarapi Lane					2		2
Artists View						1	1
Aspen					3		3
Auburn Bay			1				1
Bankview	1						1
Bayview		2				5	7
Beddington		1			1		2
Bel-Aire		5					5
Bonavista Downs		2					2
Bowness	1			1			2
Braeside	2	15	5			3	25
Bridgeland						1	1
Bridle Estates			9			1	10
Bridlewood			22			2	24
Britannia		2					2
Cambrian Heights	1						1
Canyon Meadows		6	2			1	9
Cedarbrae	4	17	11		2	3	37
Chaparral	1		13				14
Chinook Park	2	7			2	2	13
Christie Estates						1	1
Coach Hill		1				1	2
Copperfield			1			1	2
Cranston		1	2		1		4
Crescent Heights						1	1
Crestmont					2		2
Dalhousie			1		2		3
Deer Ridge		1					1
Deer Run		1				1	2
Discovery Ridge	14	2	1		13	4	34
Douglas Glen						1	1
Douglasdale/Douglasdale Estates		3	1			1	5
Eagle Ridge			1			2	3
Edgemont						1	1
Elbow Park	1				1	2	4
Elboya						3	3
Evercreek Bluffs		1	1				2

Community	Open House *						Total
	F22	F23	F24	M1	M3	U	
Evergreen	2	2	29			6	39
Evergreen Estates		2	4			4	10
Evergreen Ridge			2				2
Fairview		3					3
Garrison Green	3	2			1		6
Garrison Woods	4						4
Glamorgan	29	5			1	9	44
Glenbrook	3				2	2	7
Glendale	4					1	5
Hamptons					1		1
Haysboro		17			2	2	21
Heritage Point		1					1
Horizon Village	1						1
Hounsfeld Heights		1					1
Kelvin Grove	3	13			2	7	25
Kensington					2		2
Killarney	4				1	2	7
Kingsland		4					4
Knob Hill	1	1					2
Lake Bonavista		14	2				16
Lakeview	433	17	4	2	16	114	586
Lakeview Village	12				1	5	18
Lincoln Park	7	1				1	9
Mackenzie Lake		2	2				4
Mackenzie Town			1				1
Maple Ridge		5					5
Mayfair		3		2			5
Mayland Heights					1		1
Meadowlark Park	1	1				2	4
Midnapore	2		6		1		9
Millrise		1	8		1	2	12
Mount Pleasant	1				1		2
New Brighton			1			1	2
North Glenmore Park	20		1				21
North Haven					1		1
Oakridge	6	55	3	1	6	3	74
Oakridge Estates		11					11
Ogden		1					1
Palliser	1	9	1		2	1	14
Parkland		8	3				11
Patterson Hills	2	1					3

Community	Open House *						Total
	F22	F23	F24	M1	M3	U	
Posthill	1						1
Providence						3	3
Pump Hill		5	1		1	2	9
Queensland		3					3
Ramsay						1	1
Renfrew						1	1
Richmond Hill	3	2			4	1	10
Riverbend		4			1	1	6
Rosscarrock	1						1
Rutland Park	10					1	11
Saddleridge					1		1
Scarboro		1					1
Scenic Acres	1				1		2
Shaganappi	1					1	2
Shawnee Slopes		1	4			1	6
Shawnessy		4	10			2	16
Sierra Morena					1		1
Signal Hill	3	1			7	2	13
Silverado			10	1			11
Somerset			8			1	9
Southwood		8	3			2	13
Strathcona	3					1	4
Sunalta	1						1
Sundance		2	24			1	27
Sunnyside	2						2
The Slopes	1				13		14
Tuscany					1		1
Upper Scarboro		1					1
Valleyridge						1	1
Varsity Acres		1					1
Wentworth					1	1	2
Westgate	4						4
Wildwood	2	2			1	1	6
Willow Park		5					5
Windsor Park		1					1
Woodbine	4	17	19	2	2	3	47
Woodlands		15	8		1	3	27
Woodpark		1					1
Unknown Community in Calgary	7	3	2	1	4	8	25
Bearspaw						1	1
Dewinton		1					1

Community	Open House *						Total
	F22	F23	F24	M1	M3	U	
Elbow Valley					51	6	57
High River				1			1
Lott Creek					4		4
Okotoks				2			2
Pinebrook/Pinebrook Estates	1				7		8
Priddis		1					1
Red Deer Lake			2	2			4
Springbank					3	1	4
Springbank Hill	4				2	1	7
Turner Valley				1			1
West Meadows Estates					5		5
West Springs		1			2	1	4
County of Rocky View					1		1
MD of Foothills	1		6	1	1	3	12
Other Outside Calgary		1	1				2
Total Communities from Evaluation Forms	620	346	236	17	187	253	1659

- * F22 – February 22 (North)
 F23 – February 23 (Middle)
 F24 – February 24 (South)
 M1 – March 1 (Okotoks)
 M3 - March 3 (West)
 U – Unknown which open house was attended, or did not attend an open house