

LEGEND

— LEASE BOUNDARIES

Alberta
INFRASTRUCTURE AND
TRANSPORTATION

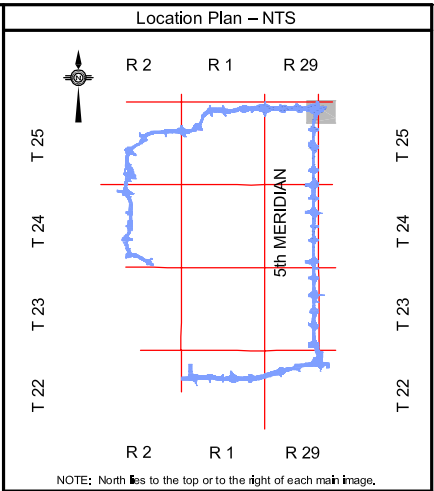
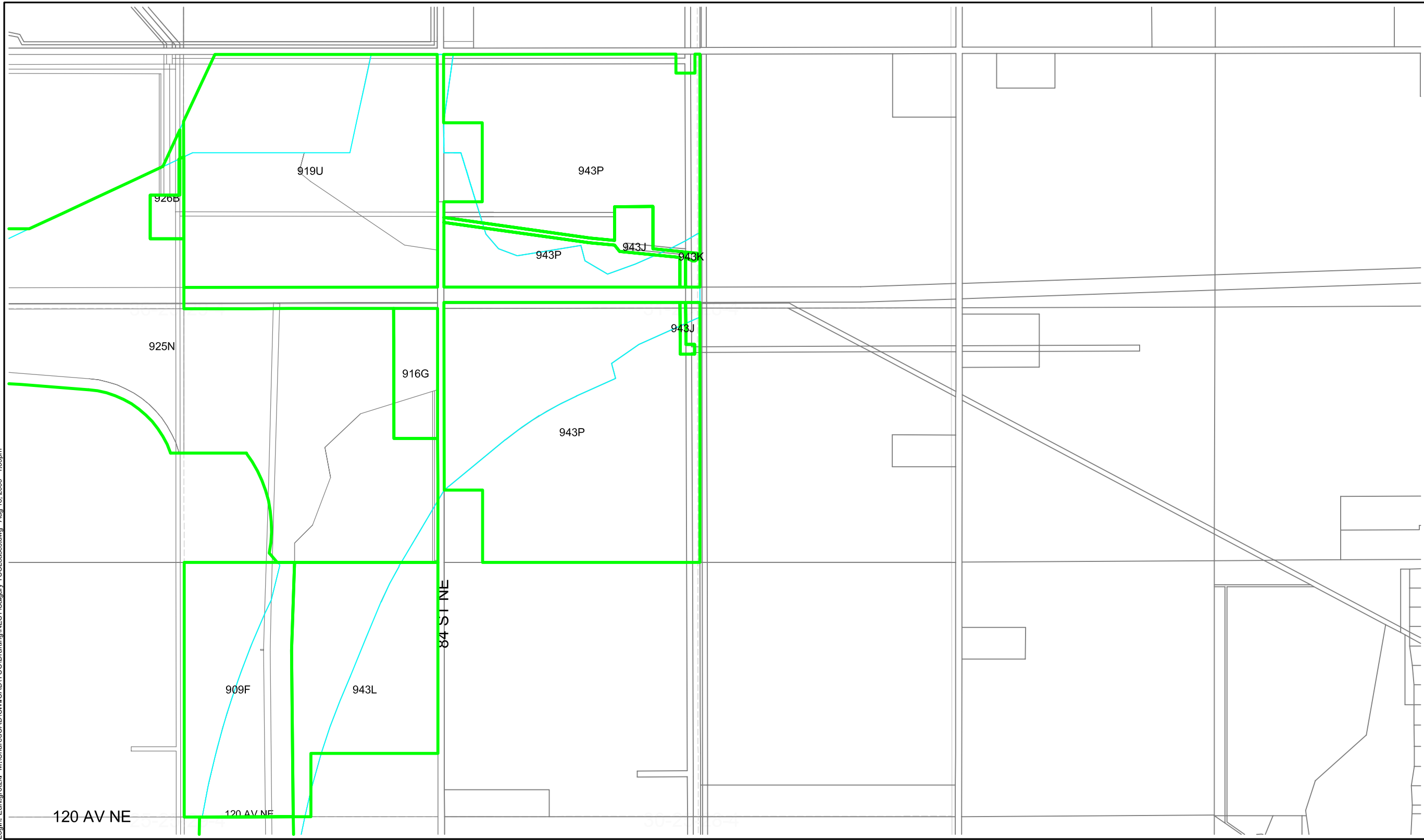
SITE RECORD PLAN
TECHNICAL SERVICES BRANCH
FACILITY EVALUATIONS

**Calgary - Transportation and Utility Corridor
North East Stoney Trail**
Date of Cadastre - May 2005

| | | |
|-------------------------|----------------------|--------------|
| SCALE: 1:10 000 | DRAWN BY: EG/DO | SHEET NUMBER |
| PLOT DATE: Aug 18, 2006 | CHECKED BY: H Stober | 2 |

THIS IS A REPRODUCTION FROM THE DEPARTMENT'S RECORDS.
NO WARRANTY OR REPRESENTATION AS TO THE COMPLETENESS OR
ACCURACY OF INFORMATION HEREON IS MADE.

LogIn: Earl.groetzki M:\Shared\CAD\Civil\CAD\TUC\Drafting\NEST\Calgary TUC\Leases.dwg Aug 18, 2006 - 1:59pm



LEGEND

— LEASE BOUNDARIES

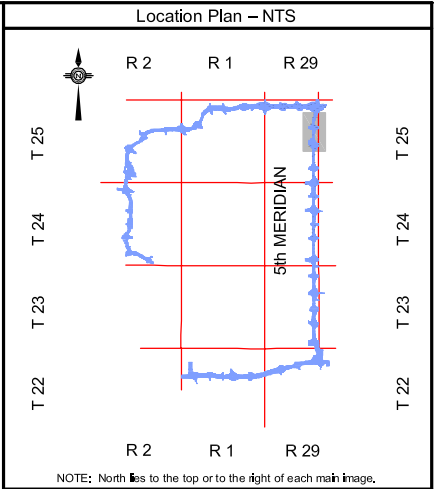
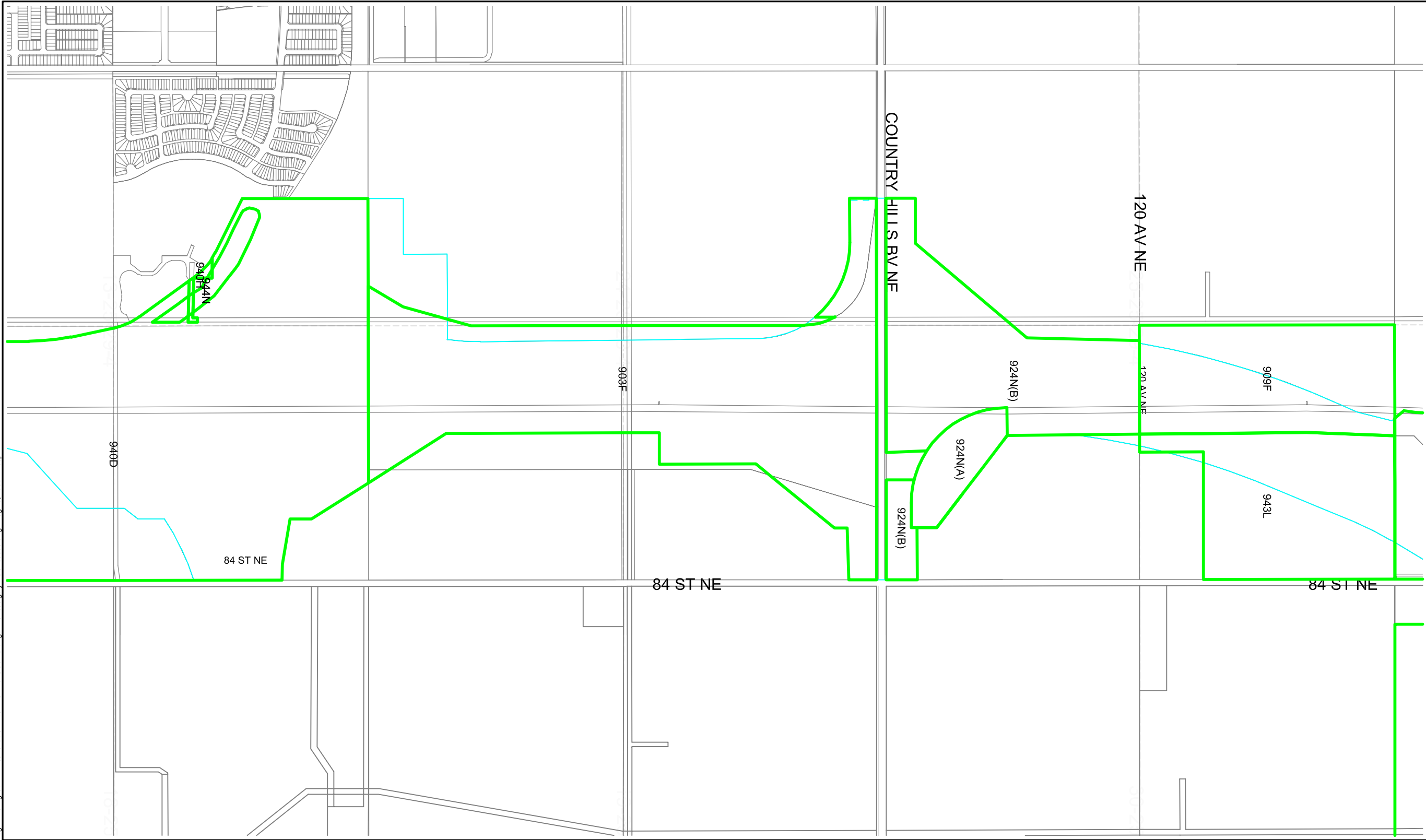
Alberta
INFRASTRUCTURE AND
TRANSPORTATION

SITE RECORD PLAN
TECHNICAL SERVICES BRANCH
FACILITY EVALUATIONS

**Calgary - Transportation and Utility Corridor
North East Stoney Trail**
Date of Cadastre - May 2006

| | | |
|-------------------------|----------------------|--------------|
| SCALE: 1:10 000 | DRAWN BY: EG/DO | SHEET NUMBER |
| PLOT DATE: Aug 18, 2006 | CHECKED BY: H Stober | 3 |

THIS IS A REPRODUCTION FROM THE DEPARTMENT'S RECORDS.
NO WARRANTY OR REPRESENTATION AS TO THE COMPLETENESS OR
ACCURACY OF INFORMATION HEREON IS MADE.



LEGEND

LEASE BOUNDARIES

Alberta
INFRASTRUCTURE AND
TRANSPORTATION

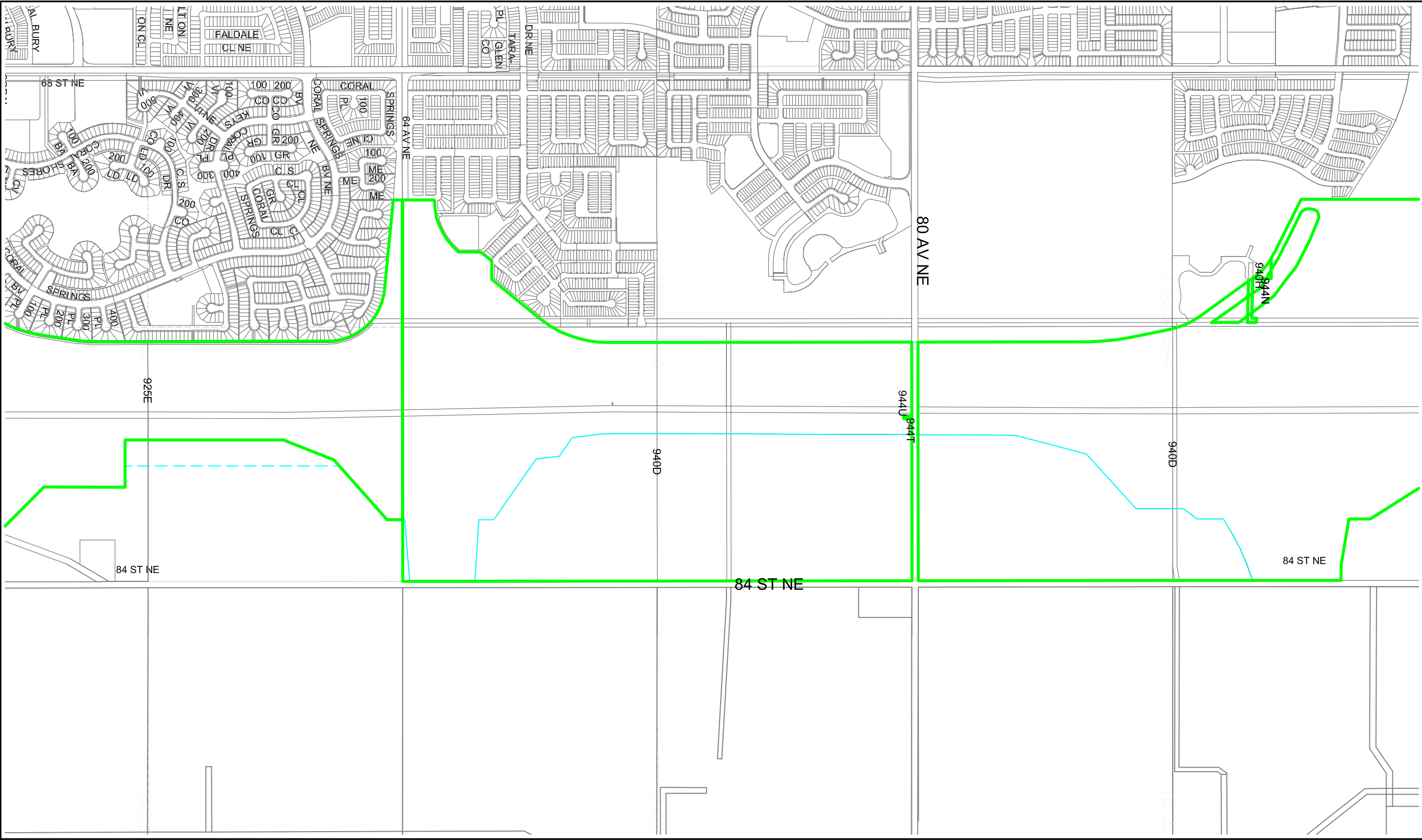
SITE RECORD PLAN
TECHNICAL SERVICES BRANCH
FACILITY EVALUATIONS

**Calgary - Transportation and Utility Corridor
North East Stoney Trail**
Date of Cadastre - May 2006

| | | |
|-------------------------|----------------------|--------------|
| SCALE: 1:10 000 | DRAWN BY: EG/DO | SHEET NUMBER |
| PLOT DATE: Aug 18, 2006 | CHECKED BY: H Stober | 4 |

THIS IS A REPRODUCTION FROM THE DEPARTMENT'S RECORDS.
NO WARRANTY OR REPRESENTATION AS TO THE COMPLETENESS OR
ACCURACY OF INFORMATION HEREON IS MADE.

LogIn: Earl.groetzki M:\Shared\CAD\Civil\CAD\TUC\Drafting\NEST\Calgary TUC\Leases.dwg Aug 18, 2006 - 2:00pm



Location Plan – NTS

NOTE: North is to the top or to the right of each main image.

LEGEND

LEASE BOUNDARIES

INFRASTRUCTURE AND
TRANSPORTATION

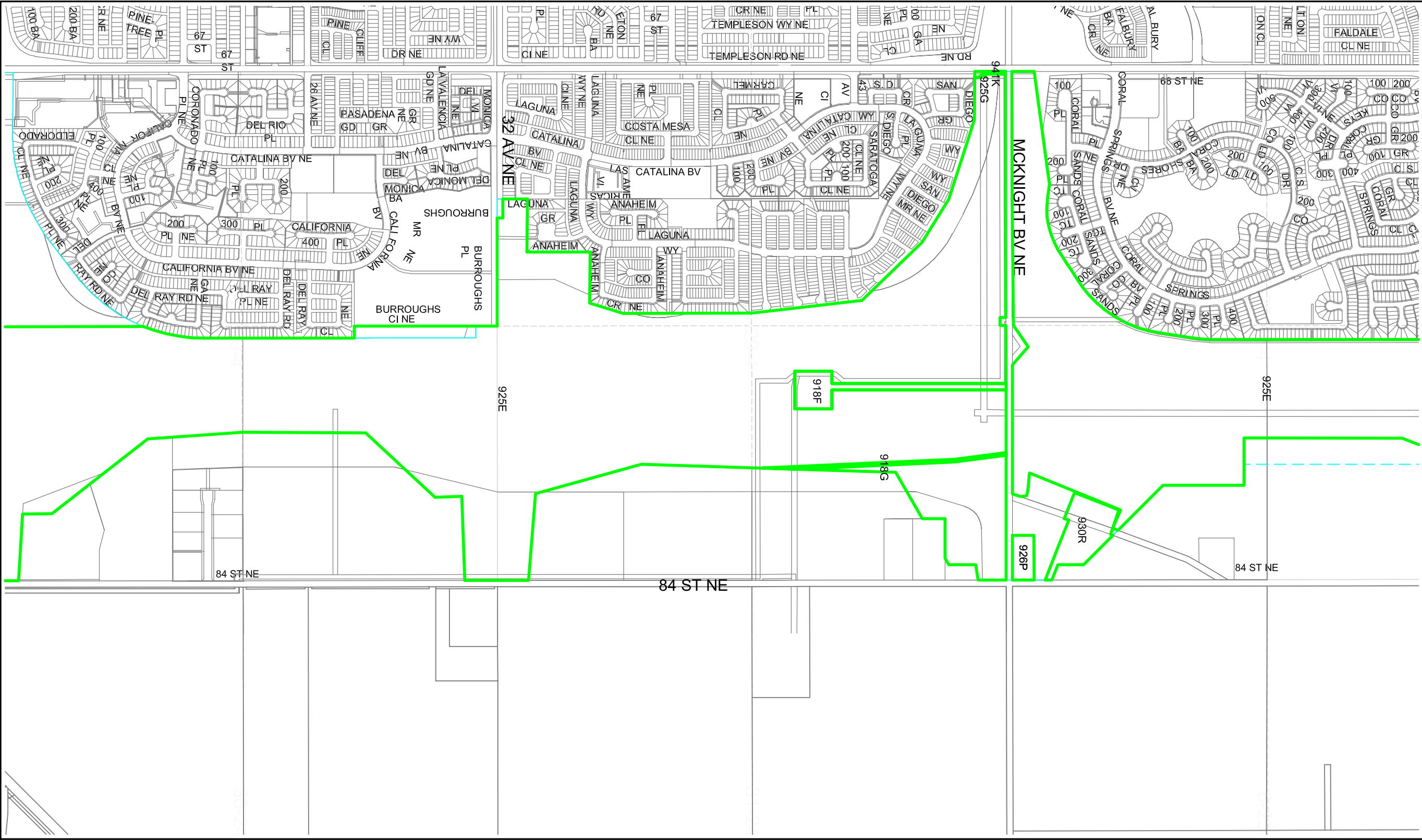
SITE RECORD PLAN
TECHNICAL SERVICES BRANCH
FACILITY EVALUATIONS

**Calgary - Transportation and Utility Corridor
North East Stoney Trail**
Date of Cadastre - May 2006

| | | |
|-------------------------|----------------------|--------------|
| SCALE: 1:10 000 | DRAWN BY: EG/DO | SHEET NUMBER |
| PLOT DATE: Aug 18, 2006 | CHECKED BY: H Stobar | 5 |

THIS IS A REPRODUCTION FROM THE DEPARTMENT'S RECORDS.
NO WARRANTY OR REPRESENTATION AS TO THE COMPLETENESS OR
ACCURACY OF INFORMATION HEREON IS MADE.

Login: Earl.grotzki M:\Shared\CAD\Civil\CAD\TUC\Drafting\NEST\Calgary TUC\Leases.dwg Aug 18, 2006 - 2:01pm



Location Plan – NTS

NOTE: North is to the top or to the right of each main image.

LEGEND

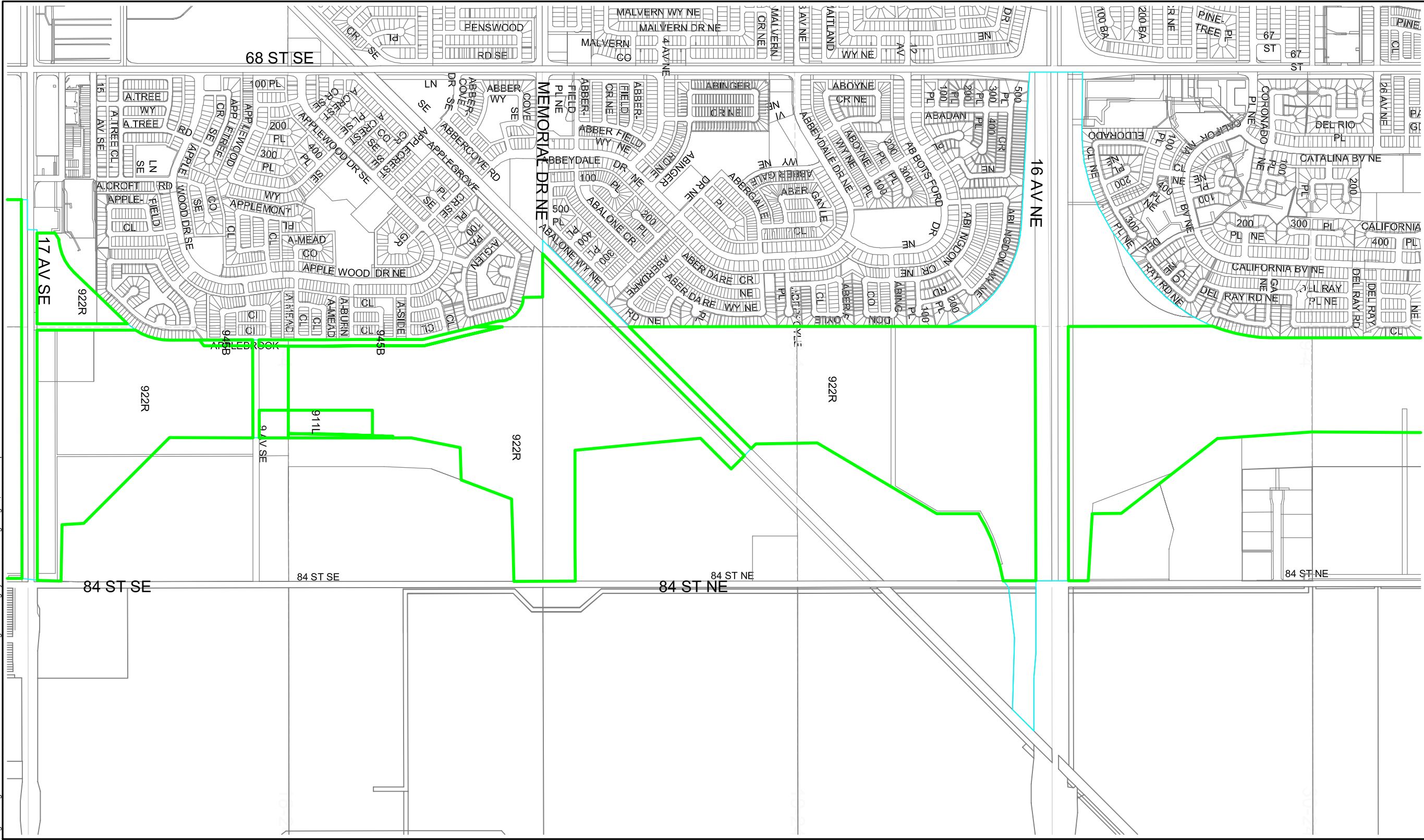
— LEASE BOUNDARIES

SITE RECORD PLAN
INFRASTRUCTURE AND TRANSPORTATION
TECHNICAL SERVICES BRANCH
FACILITY EVALUATIONS

**Calgary - Transportation and Utility Corridor
North East Stoney Trail**
Date of Cadastre - May 2005

| | | |
|-------------------------|----------------------|--------------|
| SCALE: 1:10 000 | DRAWN BY: EG/DO | SHEET NUMBER |
| PLOT DATE: Aug 18, 2006 | CHECKED BY: H Stober | 6 |

THIS IS A REPRODUCTION FROM THE DEPARTMENT'S RECORDS.
NO WARRANTY OR REPRESENTATION AS TO THE COMPLETENESS OR
ACCURACY OF INFORMATION HEREON IS MADE.



Location Plan – NTS

NOTE: North is to the top or to the right of each main image.

LEGEND

LEASE BOUNDARIES

INFRASTRUCTURE AND TRANSPORTATION

SITE RECORD PLAN

TECHNICAL SERVICES BRANCH
FACILITY EVALUATIONS

**Calgary - Transportation and Utility Corridor
North East Stoney Trail**

Date of Cadastre - May 2005

| | | |
|-------------------------|----------------------|--------------|
| SCALE: 1:10 000 | DRAWN BY: EG/DO | SHEET NUMBER |
| PLOT DATE: Aug 18, 2006 | CHECKED BY: H Stober | 7 |

THIS IS A REPRODUCTION FROM THE DEPARTMENT'S RECORDS.
NO WARRANTY OR REPRESENTATION AS TO THE COMPLETENESS OR
ACCURACY OF INFORMATION HEREON IS MADE.

