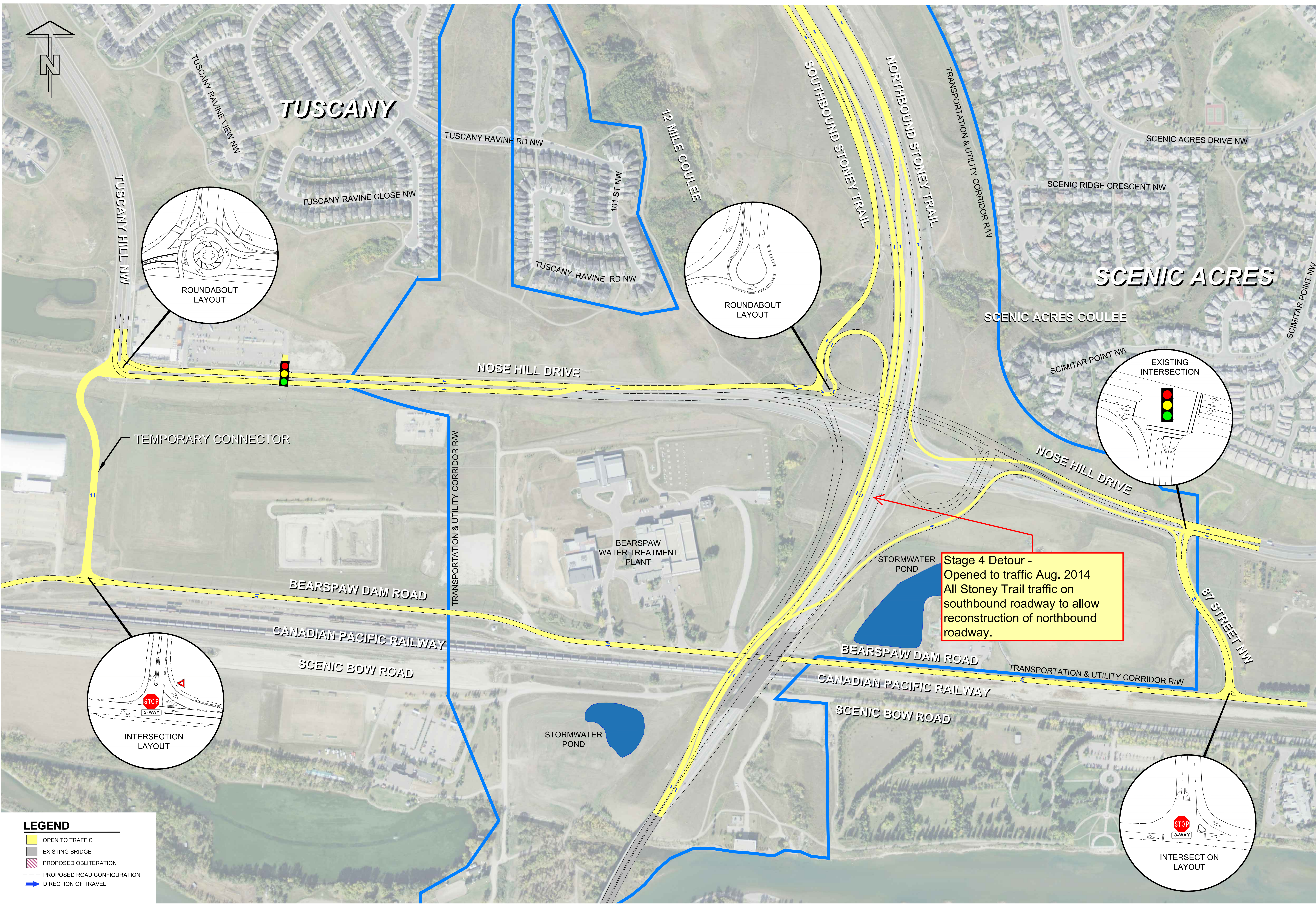


PROJECT: BILGOLLA 14.08.RM
DRAWING NO: 1408-01-01-01
DATE: 14/08/14
SCALE: AS SHOWN
PROJECT LOCATION: 12 Mile Coulee, Stoney, Alberta
DRAWN BY: [Name]
CHECKED BY: [Name]
APPROVED BY: [Name]



Stoney Trail & Nose Hill Drive Interchange - Stage 4 Interchange Detour - Aug. to Sept. 2014

