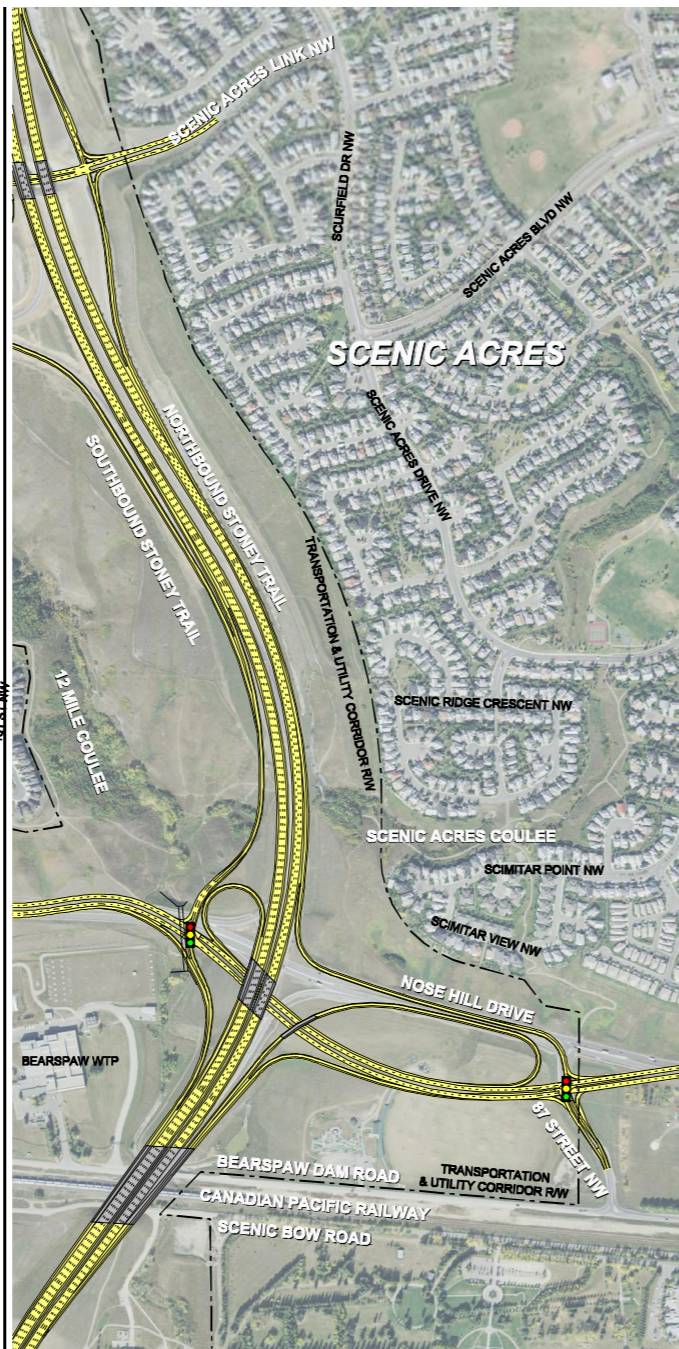


### Alternative A

Alternative A was not selected when compared with the recommended interchange for the following reasons:

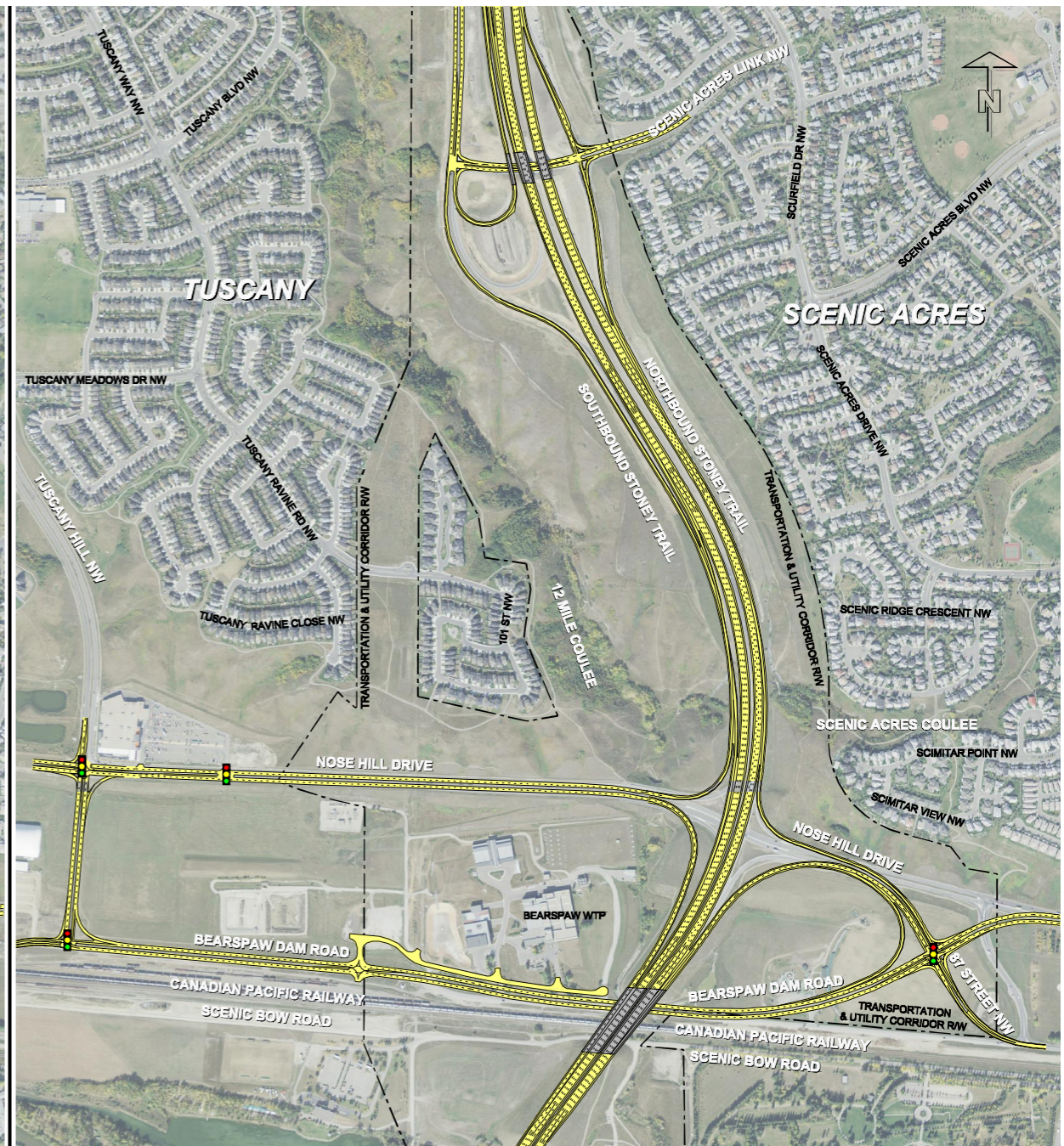
- Intersection traffic delays at West intersection
- ① Congested high volume merge onto Southbound Stoney Trail
- ② Substandard Southbound Stoney Trail weave distance
- ③ Short deceleration and storage length for Southbound exit ramp
- Additional bridge costs to construct Southbound CPR bridge



### Alternative B

Alternative B was not selected when compared with the recommended interchange for the following reasons:

- Additional year required to construct interchange
- Tighter geometry resulting in reduced safety
- Higher bridge construction costs for the Northbound exit ramp
- Short uphill acceleration length for trucks heading Northbound from Nose Hill Drive
- Restricts ability to upgrade Stoney Trail in the future



### Alternative C

Alternative C was not selected when compared with the recommended interchange for the following reasons:

- Long intersection traffic delays at East intersection
- Much longer trip distance for commuters and residents
  - SB-EB, WB-SB, EB-NB
- Confusing, non-standard interchange for drivers
- Full reconstruction of the Bears Paw Dam Road required
- Very large land area required for interchange footprint

## Stoney Trail & Nose Hill Drive Interchange - Interchanges Considered