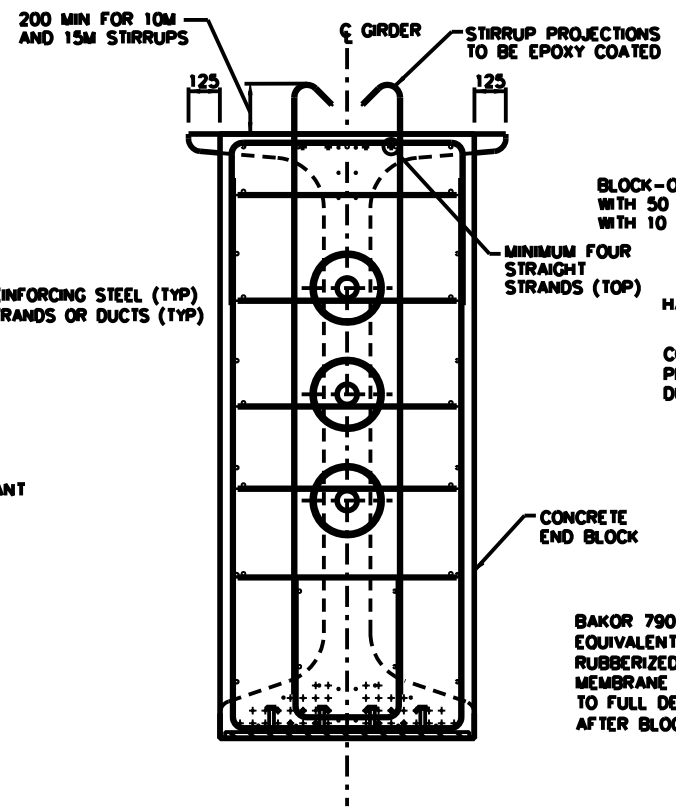
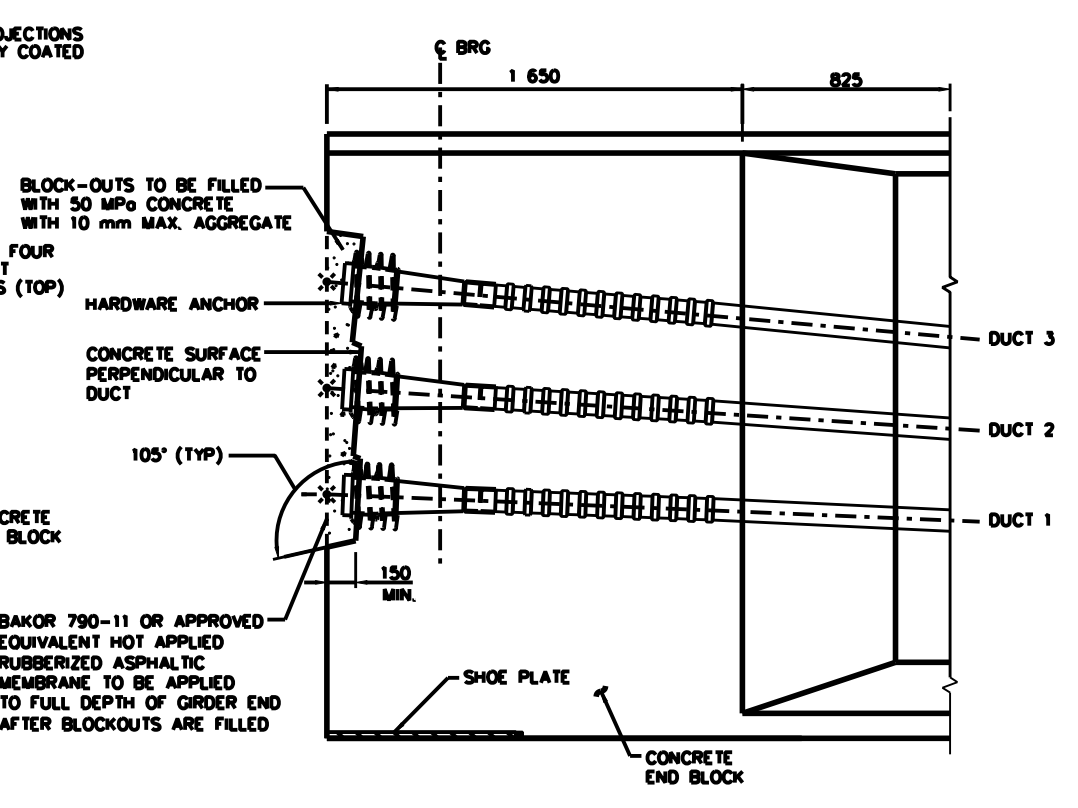


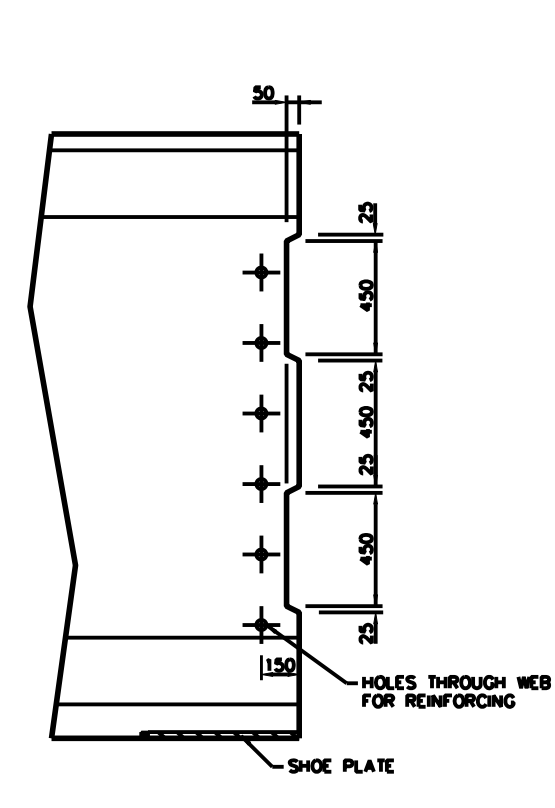
POST-TENSIONED GIRDER MIDSPAN SECTION
1:15



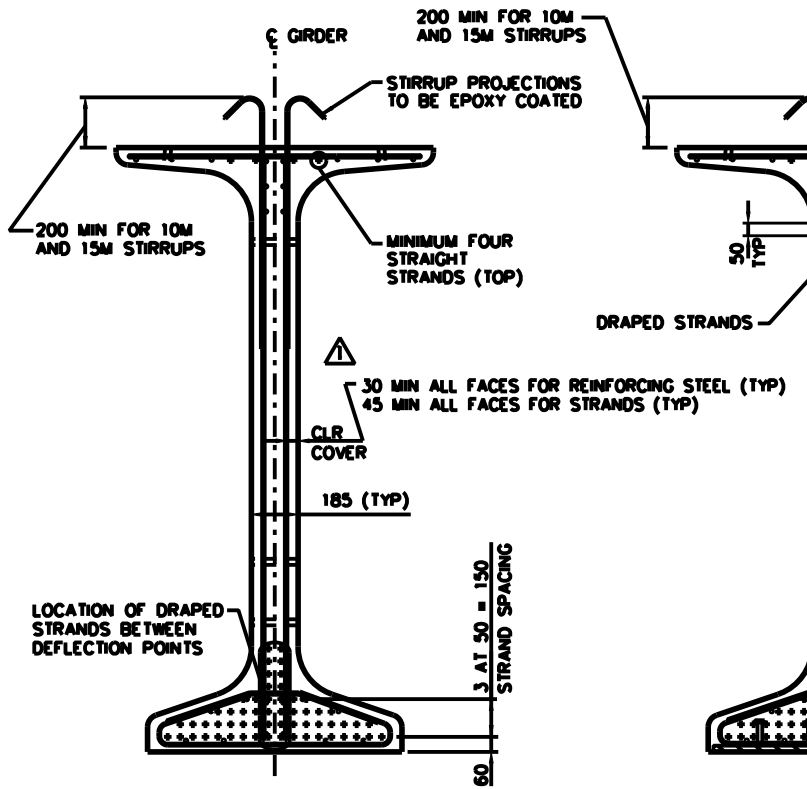
POST-TENSIONED GIRDER ABUTMENT END SECTION
1:15



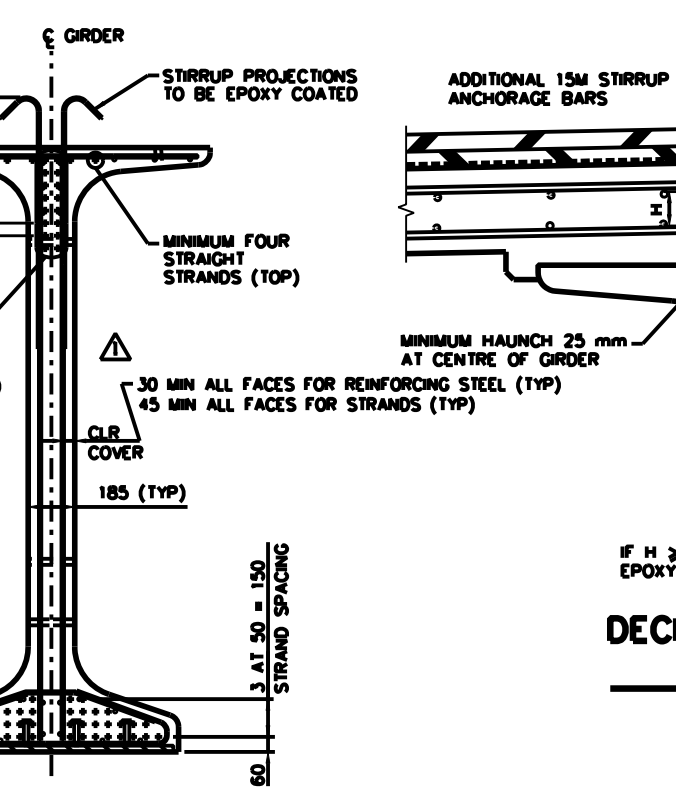
POST-TENSIONED GIRDER ABUTMENT END ELEVATION
1:15



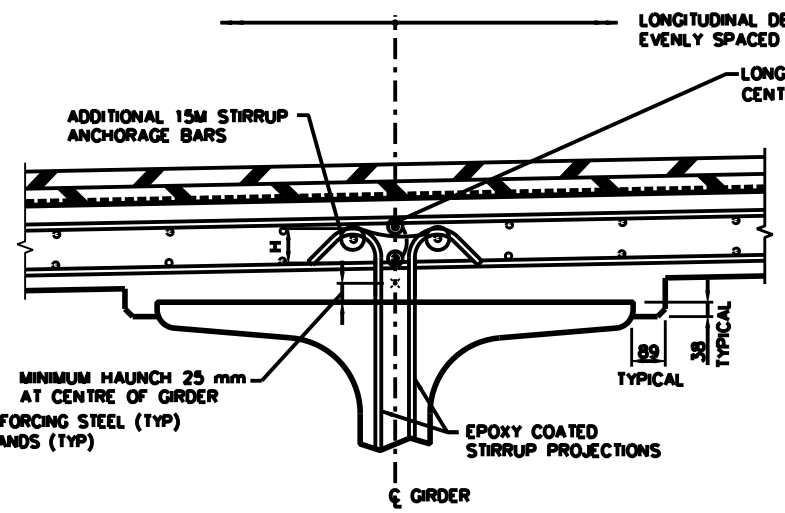
GIRDER END DETAIL FOR CASTING INTO DIAPHRAGM
1:15



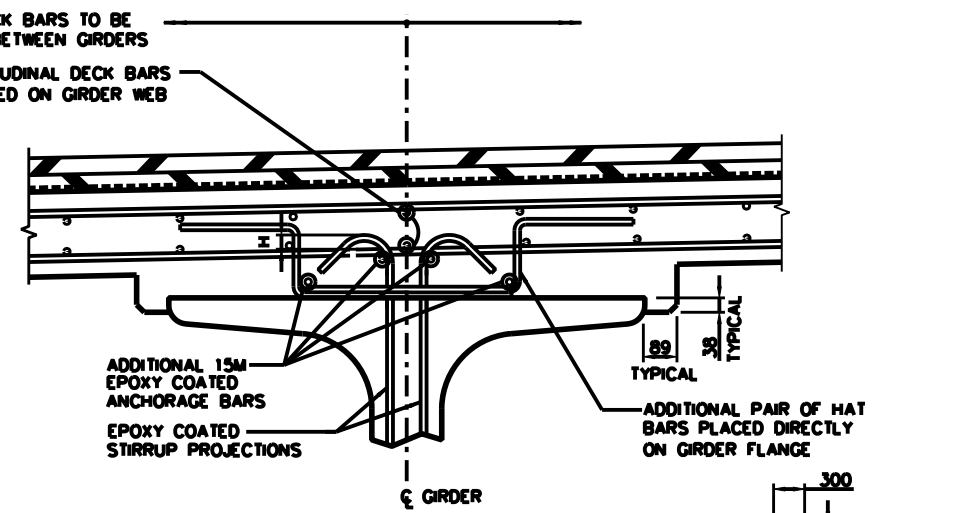
PRE-TENSIONED GIRDER MIDSPAN SECTION
1:15



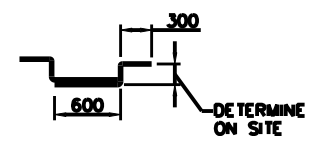
PRE-TENSIONED GIRDER END SECTION
1:15



IF $H \geq 40$ mm NO ADDITIONAL EPOXY COATED HAIRPIN BARS REQUIRED
DECK HAUNCH DETAIL NO HAT BARS
1:10



IF $H < 40$ mm ADDITIONAL EPOXY COATED HAIRPIN BARS REQUIRED
DECK HAUNCH DETAIL WITH HAT BARS
1:10



DETAILS SHOWN ARE CONCEPTUAL AND REPRESENT DEPARTMENT PRACTICES AS REFERENCED IN THE BRIDGE STRUCTURES DESIGN CRITERIA. FULL RESPONSIBILITY FOR DESIGN OF DETAILS REMAINS WITH THE CONSULTANT.

NOT FOR CONSTRUCTION

RECOMMENDED DIRECTOR BRIDGE ENGINEERING	
APPROVED EXECUTIVE DIRECTOR TECHNICAL STANDARDS BRANCH	
2009-10-28	REBAR AND STRAND MINIMUM CLEARANCE
REV	DATE
REVISIONS	BY
DATE	DATE

Albana Transportation

NU GIRDER BRIDGES
TYPICAL DETAILS SHEET 2

DATE	SHEET	DRAWING
2009.01.23	2 of 5	S-1758-08