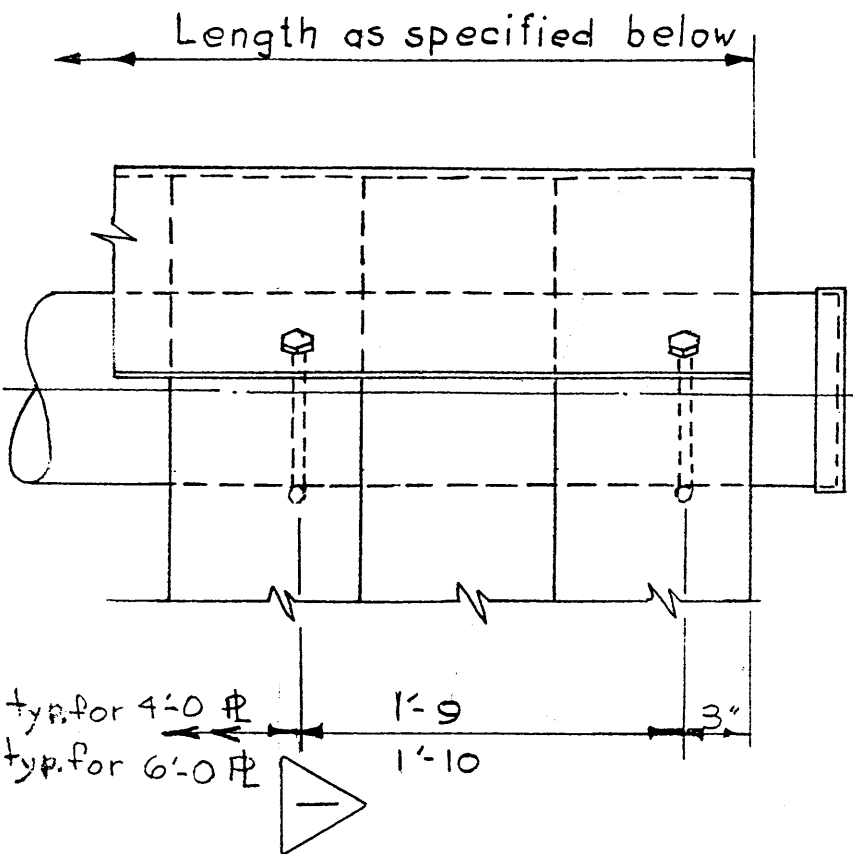


1/2"  $\phi$  bolt with hex. nut  
and washers.



**NOSE PLATE**  
Scale: 1"=1'-0

**MATERIALS REQ'D**  
 —  $\phi$  3/8" x 3'-0" ; 4'-0" or 6'-0" long.  
 — 1/2"  $\phi$  Mach. bolts x 2'-10" long.  
 — M.I washers.

$\Delta$ Aug. 31/66	Bolt Spacing	DA.	R. C.
PROVINCE OF ALBERTA DEPARTMENT OF HIGHWAYS BRIDGE BRANCH			
<b>NOSE PLATE</b>			
FILE: —	DATE: June 2/65	Dwg. 5508	