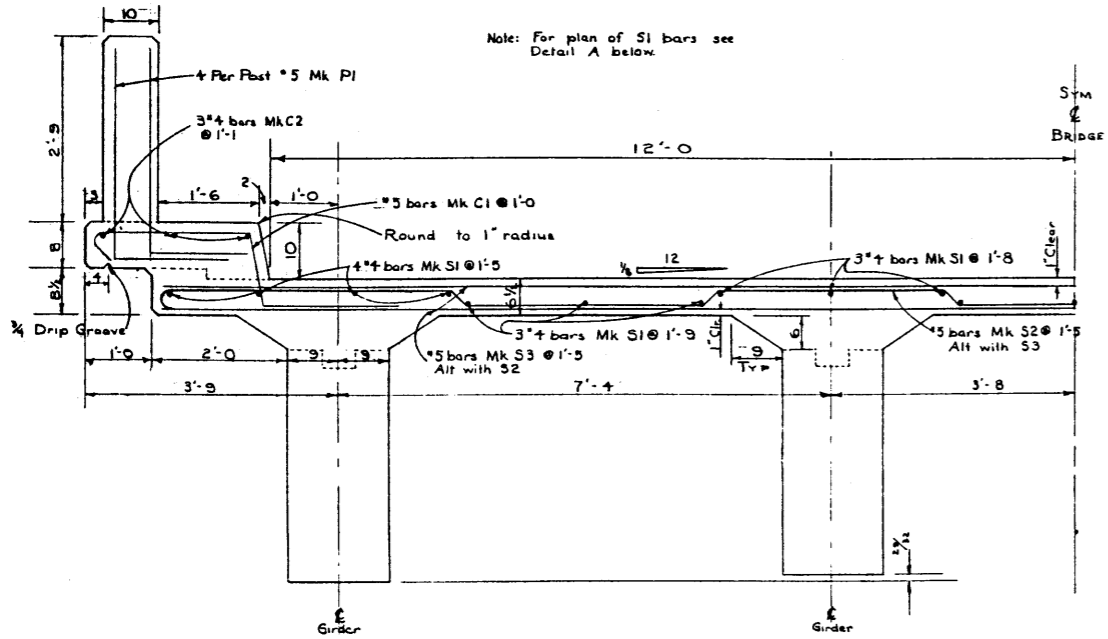
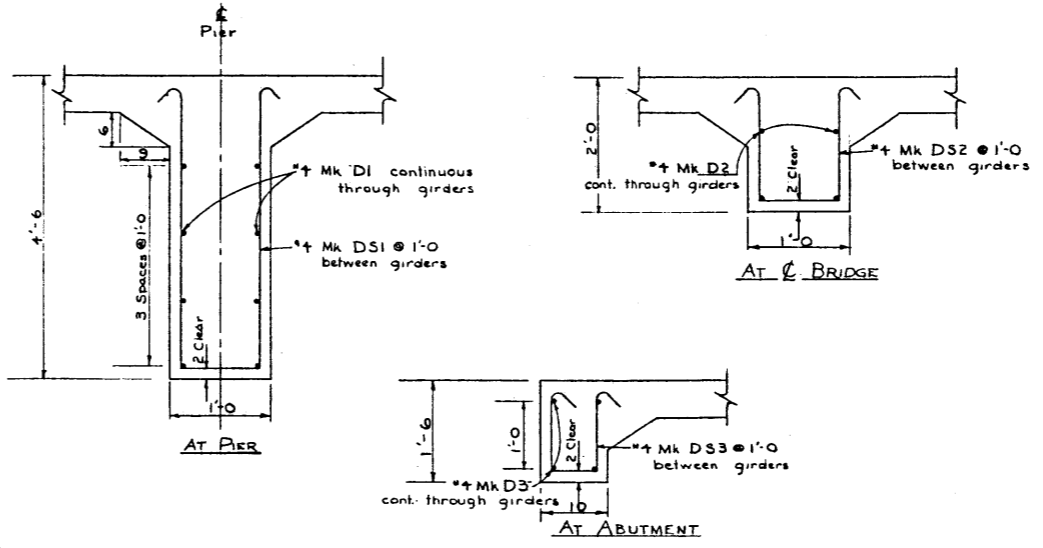


HANDRAIL DETAILS
Scale 3/8" = 1'-0"



TYPICAL DECK SECTION
Scale 3/4" = 1'-0"

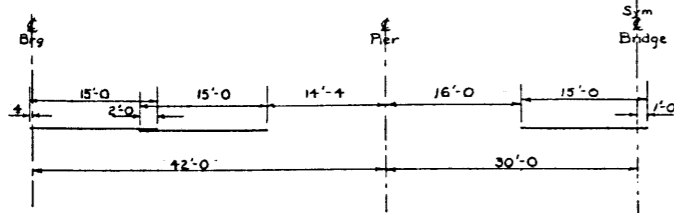
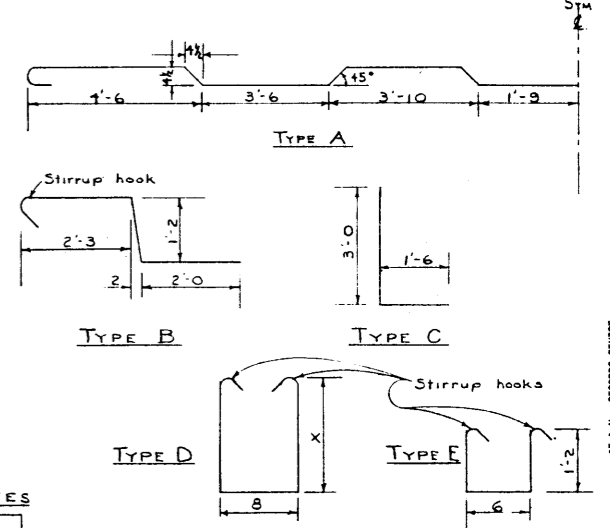


TYPICAL DIAPHRAGM SECTIONS

BAR LIST

Mark	Size	No.	Type	'X	Length	Weight
S1	#4	138	Str		15'-0	1363
S2	#5	103	A		25'-2	5133
S3	#5	204	Str		27'-0	5745
C1	#5	294	B		6'-0	1840
C2	#4	48	Str		20'-0	641
P1	#5	104	C		4'-6	488
D1	#4	16	Str		23'-0	246
D2	#4	4	Str		23'-0	61
D3	#4	8	Str		23'-0	123
DS1	#4	30	D	4'-2	9'-9	195
DS2	#4	30	D	1'-8	4'-9	95
DS3	#4	30	E		3'-7	72
						Total 14,022

BAR TYPES



DETAIL A
Showing Location of S1 bars

- NOTE:
- Designed for future 25 p.s.f. wearing surface.
 - Chamfer all exposed edges and fillet all re-entrant corners.
 - Rubbed finish on both faces curb, all faces of posts, and edge of slab.
 - Strike girder falsework before pouring curbs.
 - Pour diaphragms with adjoining girders.

QUANTITY ESTIMATES

ITEM	QUANTITY	UNIT
REINFORCING STEEL	14,022	Lbs
CONCRETE CLASS B	113	Cu Yds

NO.	DATE	DESCRIPTION	BY

STANDARD 42-60-42
24'-0" ROW
CONCRETE GIRDER BRIDGE

SLAB DETAILS

GOVERNMENT OF THE PROVINCE OF ALBERTA
DEPARTMENT OF HIGHWAYS
BRIDGE BRANCH, EDMONTON

FILE NO. _____ HWY. NO. _____ DWG. NO. _____
LOCATION _____ SCALE AS SHOWN _____ S618
STREAM _____ SHEET 2 OF 4

DESIGNED BY _____ DATE _____
 DETAILED BY S.S.W. DATE JAN 5 1956
 CHECKED BY _____ DATE _____