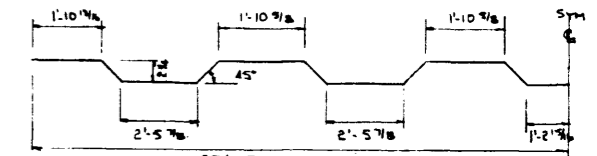
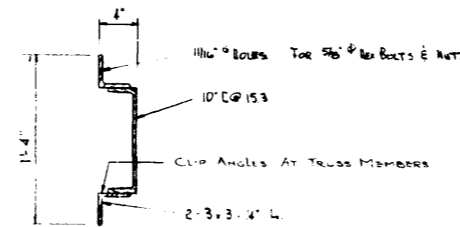
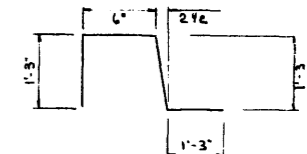


BAR LIST - DECK

MARK	NO.	SIZE	TYPE	LENGTH	WEIGHT
S 501	172	5	STR	25'-8"	4605
S 502	85	5	Δ	26'-3"	2327
S 401	215	4	STR	21'-0"	3016
C 501	172	5	B	4'-4"	777
TOTAL					10,725 LBS

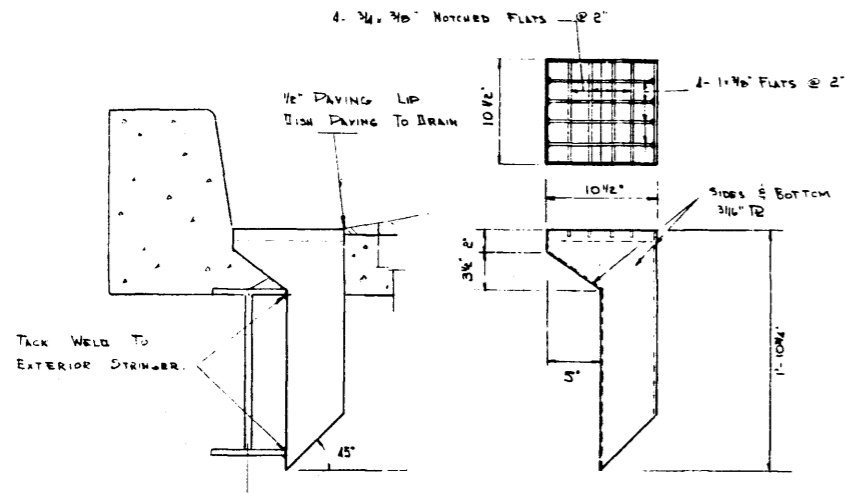


TYPE A



TYPE B

ALL DIMENSIONS OUT TO OUT.



GUARD RAIL SECTION  
SCALE: 1/2" = 1'-0"

-GENERAL NOTES- Δ

- MATERIALS** All steel, except roller bearings, conform to A.S.T.M. Specification A 36. Rollers to conform to A.S.T.M. A235 (Class C1).
- High strength bolts shall conform to the requirements of A.S.T.M. Specification A 325 and rivets shall conform to the requirements of A.S.T.M. Specification A 141-55.
- CONSTRUCTION** All steel surfaces not in contact with steel or concrete to receive one shop coat red lead, iron oxide, oil alkyd type paint conforming to requirements of the Canadian Government Specification Board - Specification 1-GP-166 Type II and have a minimum dry thickness of 1.5 to 2.5 mils.
- Truss shall be cambered as shown.
- All connections except those on bracing members are to be considered as "Friction type".
- Truss and floor system connections shall have 7/8" diameter rivets or high strength bolts and bottom lateral system connections shall have 3/4" diameter rivets or high strength bolts, except that all field connections shall have high strength bolts.
- All steel shall be blast cleaned according to Specification SEPC-69-6-43T of the Steel Structures Painting Council. Painting shall not commence until cleaning has been approved by the Engineer.
- All requirements of the Bridge Branch Specification for the Supply of Structural Steel for Bridges (Specification No. B 187-64) shall be met.
- Shop assembly shall be done in accordance with Article 2:10:14 of the A.A.S.H.O. Specifications and shall be "Full Truss Assembly".
- All dimensions shown are correct at +70°F. Bearings are to be centered at +20°F and to have provisions for movement for +20°F.
- All bearings involving welding are to be stress relieved in accordance with Article 2:10:34 of the A.A.S.H.O. Specifications.
- Edges of flame-cut material to have a Brinell hardness of not more than 200.

NO.	DATE	DESCRIPTION	BY
4			
3			
2	Oct 16/69	General Notes	T.B.
1	Feb 27/66	Timber Deck General Notes	R.E.B.

REVISIONS

STD. 100 FT PENY TRUSS  
24' ROADWAY  
MISCELLANEOUS DETAILS

GOVERNMENT OF THE PROVINCE OF ALBERTA  
DEPARTMENT OF HIGHWAYS  
BRIDGE BRANCH, EDMONTON

FILE NO. \_\_\_\_\_ HWY. NO. \_\_\_\_\_ DRAW. NO. \_\_\_\_\_  
LOCATION SCALE AS SHOWN SHEET 2 OF 2  
STREAM \_\_\_\_\_

5658

DESIGNED BY: R. E. B.  
DATE: Feb 27, 1966  
CHECKED BY: \_\_\_\_\_  
DATE: \_\_\_\_\_