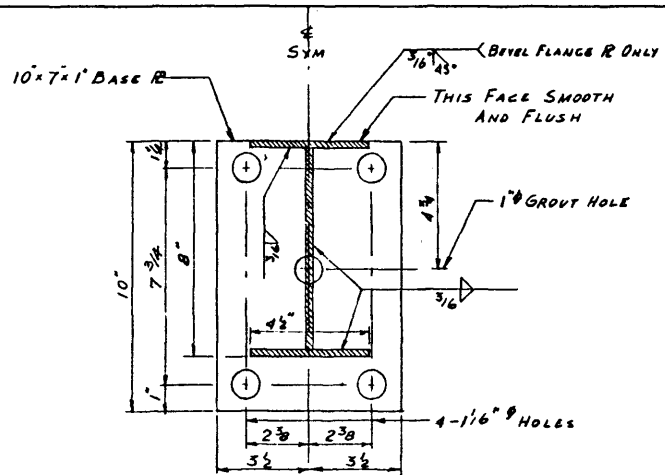
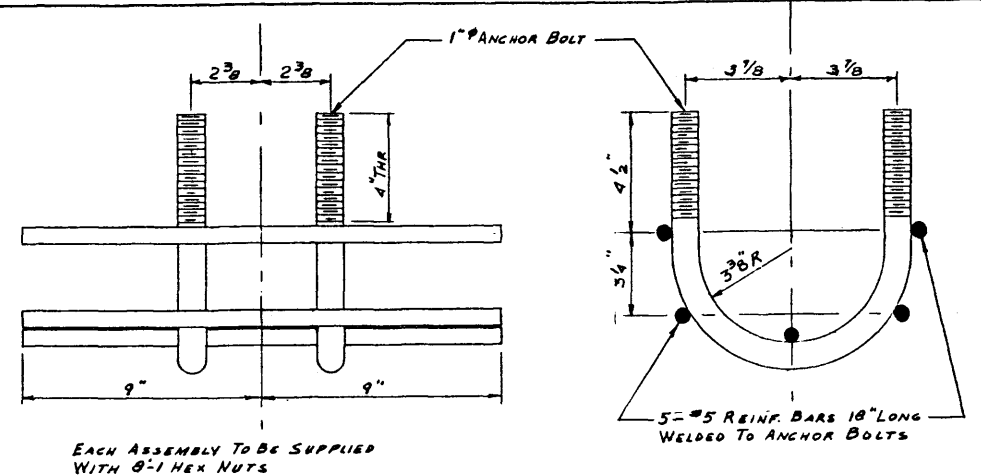


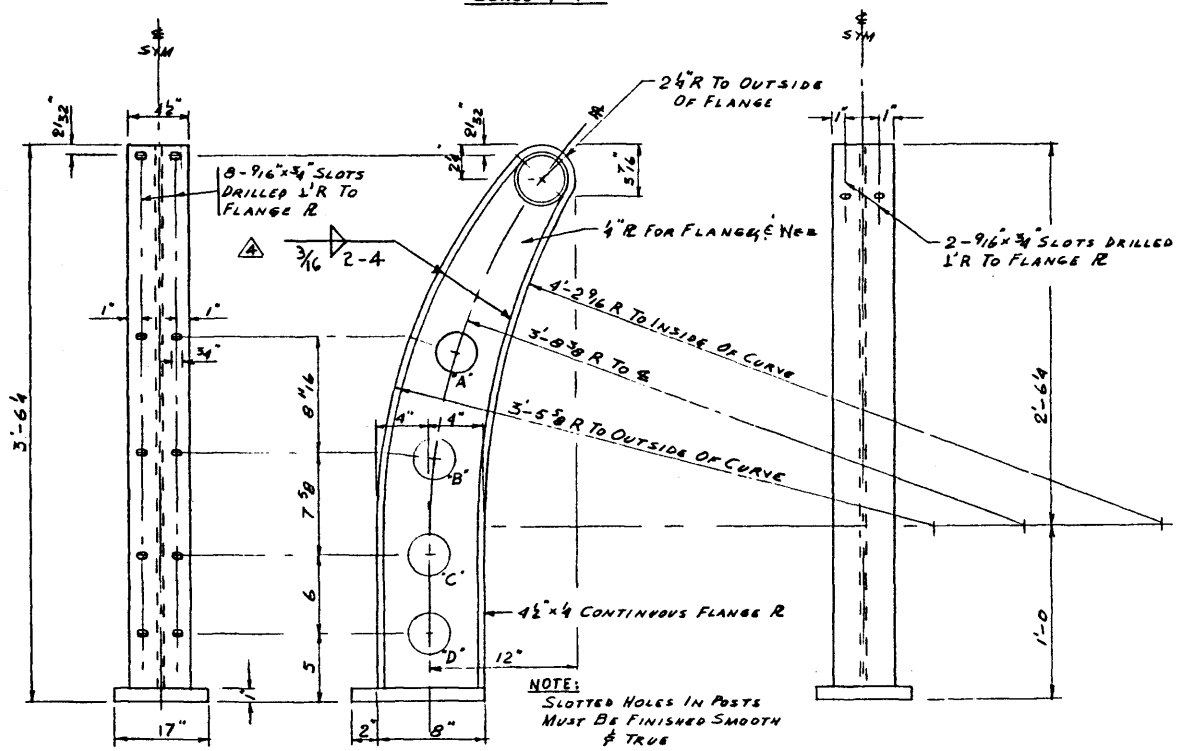
ELEVATION
SCALE 3/4"=1'-0"



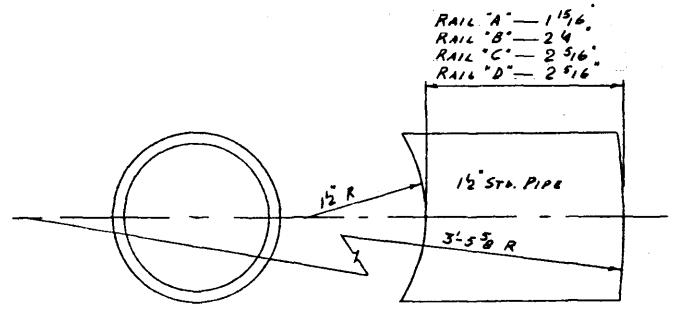
BASE PLATE
SCALE 3/4"=1'-0"



ANCHOR DETAILS
SCALE 3/4"=1'-0"



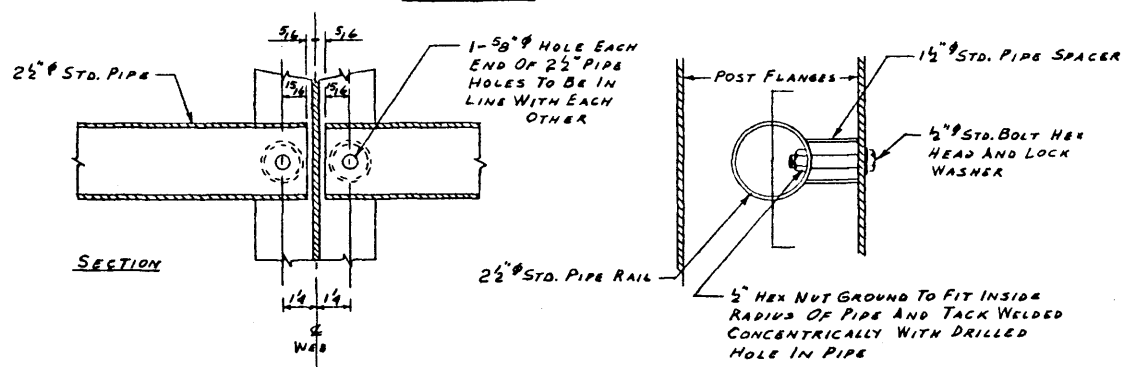
POST DETAIL
SCALE 1 1/2"=1'-0"



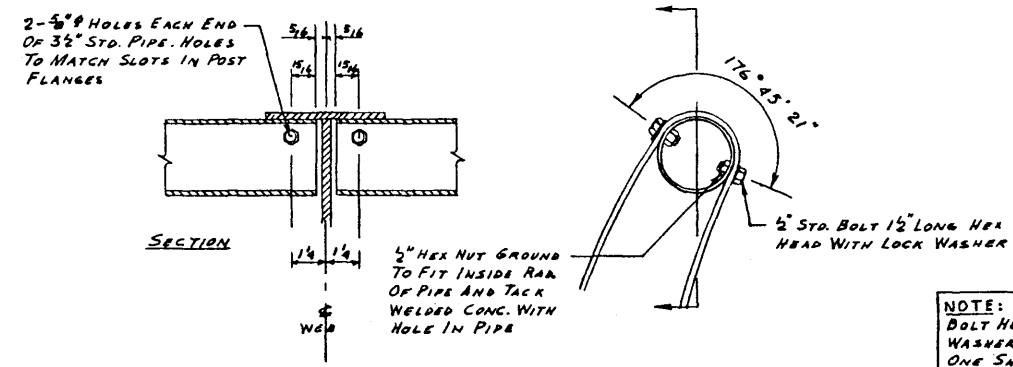
SPACER DETAIL
NTS

- RAIL "A" - 1 1/2"
- RAIL "B" - 2 1/4"
- RAIL "C" - 2 5/8"
- RAIL "D" - 2 9/16"

BILL OF MATERIALS	
NO	DESCRIPTION
	POSTS EACH WITH ONE ANCHOR ASSEMBLY
	RAIL "A" SPACERS - EACH WITH ONE 1/2" HEX HEAD MACH. BOLT 3" LONG AND ONE LOCK WASHER
	RAIL "B" SPACERS - EACH WITH ONE 1/2" HEX HEAD MACH. BOLT 3 1/2" LONG AND ONE LOCK WASHER
	RAIL "C" & "D" SPACERS - EACH WITH ONE 1/2" HEX HEAD MACH. BOLT 3 1/2" LONG AND ONE LOCK WASHER
	TOP RAIL 1/2" HEX HEAD BOLT 1 1/2" LONG WITH 1 LOCK WASHER EACH



LOWER RAIL CONNECTION
SCALE 3/4"=1'-0"



TOP RAIL CONNECTION
SCALE 3/4"=1'-0"

NO.	DATE	DESCRIPTION	BY
1	Feb. 12/59	Weld symbol - flgs to web of post	H.H.H.
2	Dec. 2/58	Max. Post Spacing Changed	T.J.T.
3	Sept. 16/58	Revised dimensions on base plates & anchors	N.B.

**INCLINED
SIDEWALK TYPE
RAILING**

DEPARTMENT OF HIGHWAYS
BRIDGE BRANCH
APRIL 19 1958
CONTRACT NO

DWG. NO.
S-661

NOTE: ALL STEEL INCLUDING BOLT HEADS, NUTS, SPACERS, WASHERS ETC. TO BE GIVEN ONE SHOP COAT OF RED LEAD TO BE APPLIED AS PER SPECIFICATION

DESIGN BY J.H. DANIELS APRIL 14-1958
DWN. BY F.M. APRIL 16-1958

AT & U - RECORDS CENTRE
1100778