

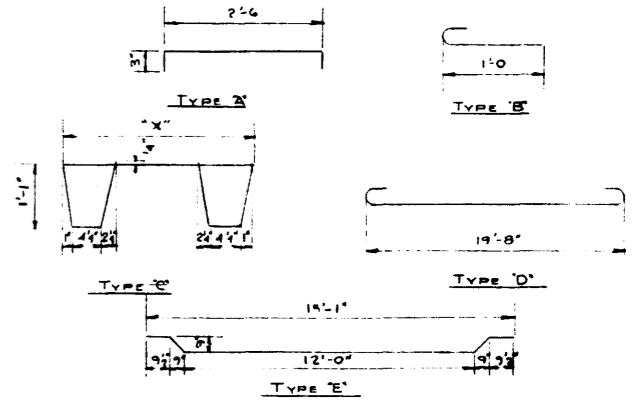
**BAR LIST**

MARK	SIZE	NO.	TYPE	'X'	LENGTH	WEIGHT
G301	3	19	C	2'-8"	7'-6"	93
G302	3	43	Str.		2'-0"	92
G303	3	32	B		1'-5"	17
G304	3	4	A		3'-0"	5
G305	3	3	Str.		19'-8"	22
G306	3	10	Str.		5"	2
G401	4	2	Str.		19'-8"	26
G501	5	4	Str.		2'-4"	10
G901	9	4	D		22'-2"	302
G902	9	2	E		15'-8"	107
* G502	5	2	C			
* G307	3	4	C			

\* For skewed stringer only

**BAR TYPES**

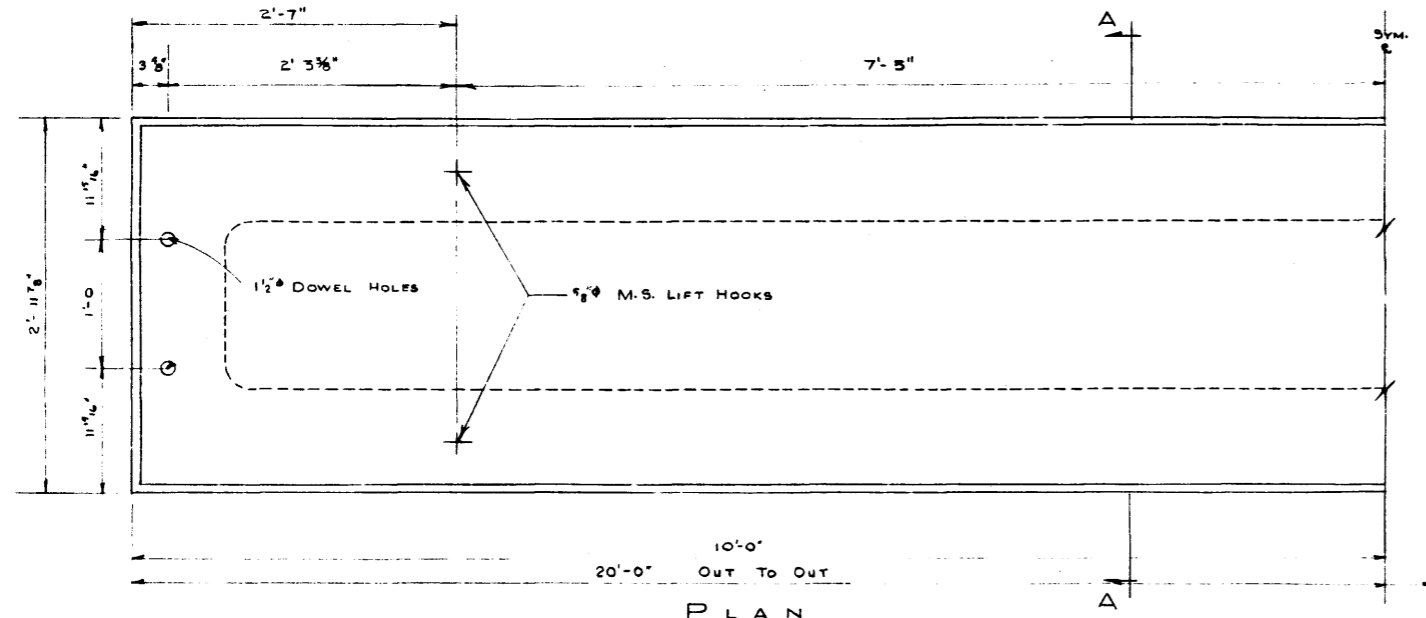
ALL DIMENSIONS ARE OUT TO OUT.



Dimensions are out to out.

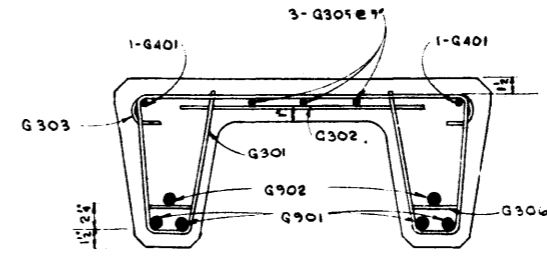
**GENERAL NOTES:**

- All concrete materials used shall conform to the current applicable A.S.T.M. specifications.
- Concrete shall attain a minimum Compressive strength of 4000 p.s.i. at 28 days.
- Entrained air shall fall within the limit 3% to 5%
- Reinforcing steel shall be Intermediate grade conforming to the specifications G301-1954 or G302-1954 and deformed to the requirements of G306-1954, of the C.S.A.
- Loading: A.A.S.H.O. - 1-H20-516 wheel line per stringer.
- Concrete Test Cylinders - Test cylinders shall be tested by an independent testing laboratory. Copies of all test results shall be forwarded to the Bridge Branch. Tests shall be taken at the rate of 1 cylinder for each 2 stringers with not less than 2 cylinders for each day's pouring.

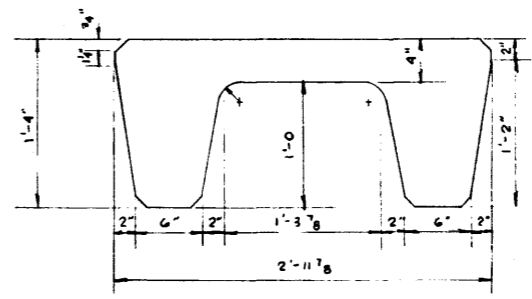


**PLAN**

Scale: 1/2" = 1'-0"

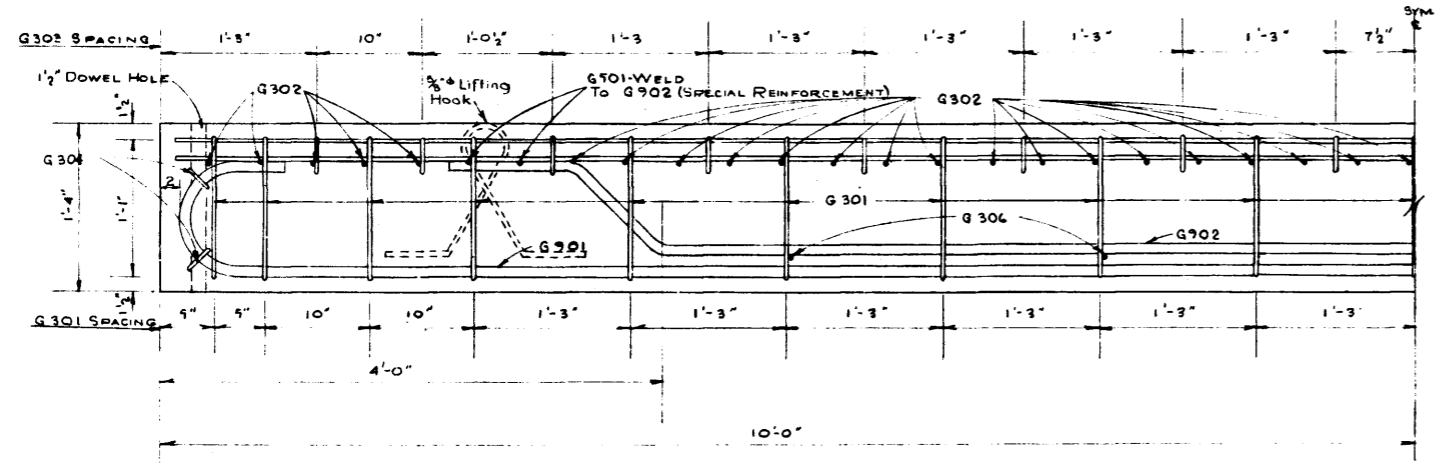


**REINFORCING**



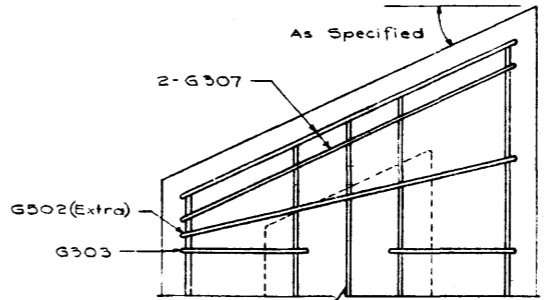
**DIMENSIONING**

**SECTION A-A**



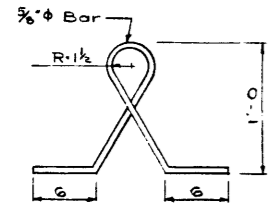
**ELEVATION REINFORCEMENT**

Scale: 1/2" = 1'-0"

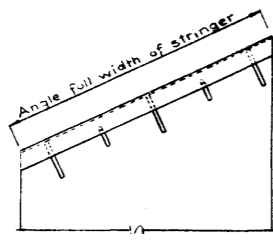


**SKIEW STRINGER**

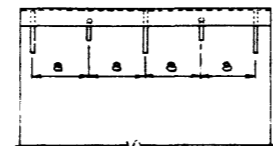
All other details to conform to those shown for square stringer. On skew stringers the lifting hooks are to be placed 7'-5" from the mid point of the unit.



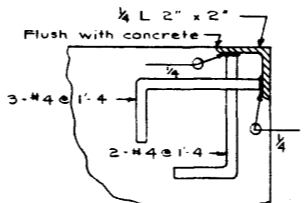
**LIFTING HOOK**  
4 Req'd



**SKIEWED STRINGER**



**SQUARE STRINGER**



**SECTION**

**PROTECTION ANGLE**

To be supplied when called for

DESIGNED BY: \_\_\_\_\_ DATE: \_\_\_\_\_  
 CHECKED BY: \_\_\_\_\_ DATE: \_\_\_\_\_  
 DETAILED BY: E.D.J.S. DATE: MAY 8 1952  
 CHECKED BY: \_\_\_\_\_ DATE: \_\_\_\_\_

NO.	DATE	DESCRIPTION	BY
4			
3	May 14/52	Lifting hooks moved and Lifting Hooks	D.S.L.
1	Jan 20/52	Protection Angles, Skew Details	SGW

**STANDARD CONCRETE**

**20FT. TYPE 'G' STRINGER**

**G20**

**GOVERNMENT OF THE PROVINCE OF ALBERTA**  
 DEPARTMENT OF HIGHWAYS  
**BRIDGE BRANCH, EDMONTON**

FILE NO.	HWY. NO.	DWG. NO.
LOCATION	SCALE AS SHOWN	<b>5668</b>
STREAM	SHEET	OF