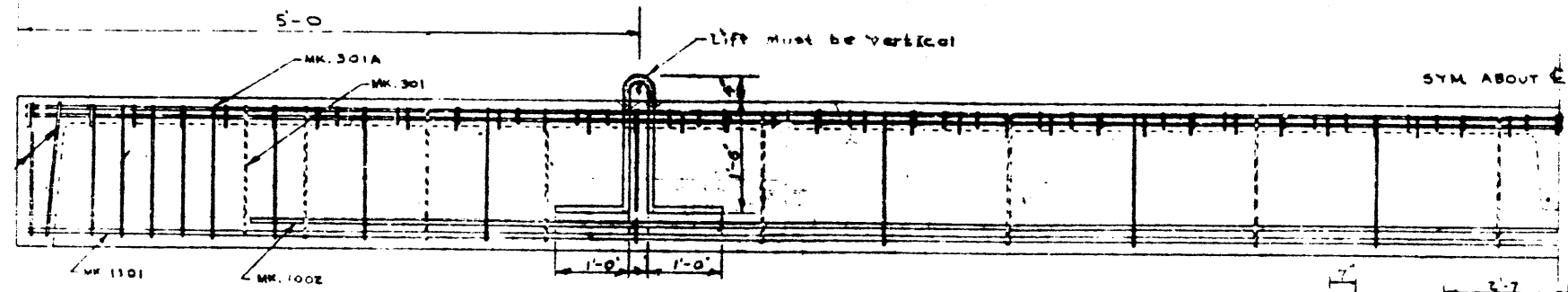
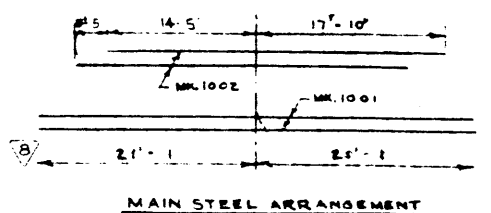


MARK	NO.	SIZE	CUT LENGTH	SKETCH	AMT	REMARKS
301	30	3	6'-7"		74	
302	114	3	1'-4"		57	
303	67	3	4'-1"		103	
304	24	3	5'	STR.	4	
305	3	3	42'-2"	STR.	43	
306	4	3	9'-3"		14	
301A	10	3	10'-0"		40	
401	2	4	42'-2"	STR.	55	
501	2	5	2'-7"	DO		DIAPHRAGM
1101	4	11	42'-2"	DO	33	
1002	4	10	32'-3"	DO	55	
TOTAL					1842	

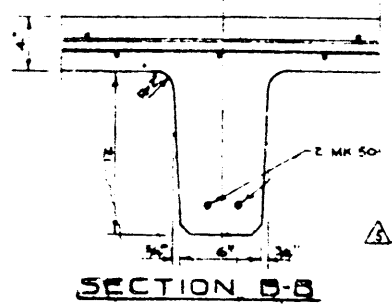
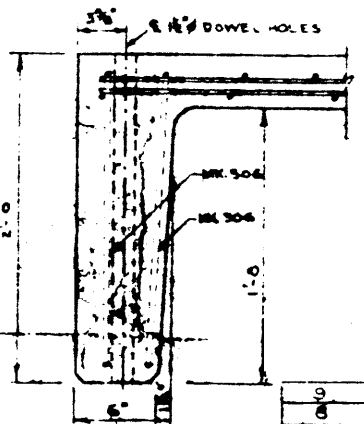
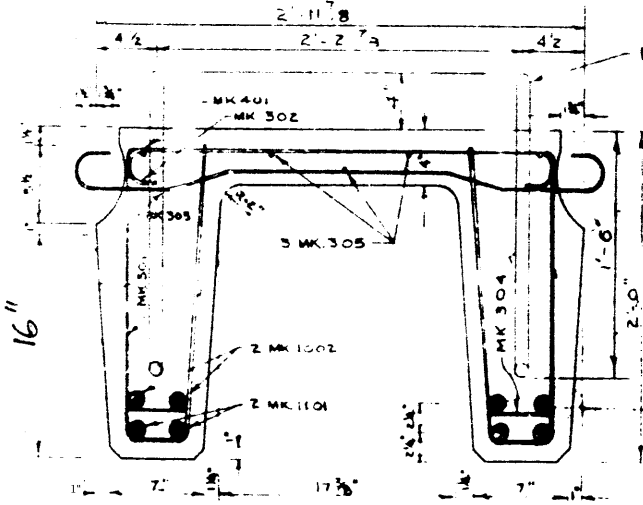
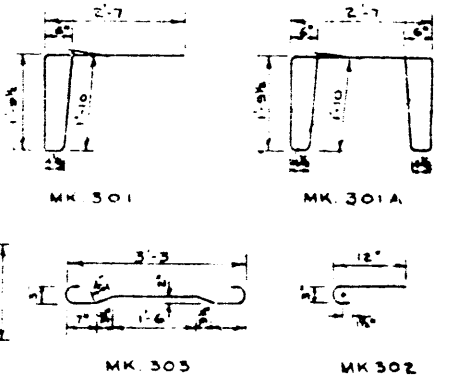
NOTE
 ALL STRINGERS TO BE BUILT TO 6° RHF SKEW.



Note: Lifting bars to be burned flush with surface after stringers in place

4 lifting bars = 80#

*9 lifting bar or approved equivalent



GENERAL NOTES

④

- All concrete materials shall conform to the current applicable A.S.T.M. specifications - Concrete shall be of standard aggregate & shall attain a min. compressive strength of 5000 p.s.i. at 28 days. - Entrained air shall fall within the limits 4% ± 0.2%.

- Reinforcing steel shall be intermediate grade conforming to the C.S.A. specification G30.1-1954 or G30.2-1954 & deformed to conform to the requirements of G30.6-1954.

- Loading live load H20-516 of the A.A.S.H.O. 1/2 wheel load to each stringer. Dead load 25 p.s.f. wearing surface.

- Stringers to be cast according to details on this drawing except for special alterations shown on accompanying drawings.

PRECAST CONCRETE STRINGER
 TYPE E 42 FT.
 LOADING H20-516

GOVERNMENT OF THE PROVINCE OF ALBERTA
 DEPARTMENT OF HIGHWAYS
 BRIDGE BRANCH, EDMONTON

NO.	DATE	DESCRIPTION	BY
9	Mar 2/62	Entrapped bar	W.J.H.
8	June 6/60	Correct length for McKenney G.S.	H.H.H.
7	May 26/60	Adapted to New Length	H.H.H.
6	May 1/59	Reinforcement details; Length.	I.E.W.
5	Oct 7/58	Notes added	R.E.
4	Dec 16/58	Corrected dimensions	I.E.W.
3	June 17/58	Allowed alternate lifting bars	H.H.H.
2	May 19/58	Added lifting bars	R.E.
1	APRIL 6/58	TRACED BY	D.G.L.

REVISIONS

FILE NO. _____ REV. NO. _____ DRAW. NO. 5698A
 LOCATION _____ SCALE _____
 STREAM _____ SHEET _____ OF _____